



Xiaomi Mi 9 Battery Replacement

Use this guide to replace a worn-out or dead...

Written By: Dominik Schnabelrauch



INTRODUCTION

Use this guide to replace a worn-out or dead battery in your Xiaomi Mi 9.

If your battery is swollen, [take appropriate precautions](#). For your safety, **discharge your battery below 25%** before disassembling your phone. This reduces the risk of a dangerous thermal event if the battery is accidentally damaged during the repair.

Although it's possible to remove the battery without removing the loudspeaker unit we recommend doing so to make the removal procedure easier.

You'll need **replacement adhesive** to reattach components when reassembling the device.



TOOLS:

[Spudger](#) (1)
[Suction Handle](#) (1)
[iFixit Opening Picks \(Set of 6\)](#) (1)
[iOpener](#) (1)
[Phillips #00 Screwdriver](#) (1)
[ESD Safe Blunt Nose Tweezers](#) (1)
[Tweezers](#) (1)



PARTS:

[Xiaomi Mi 9 Battery](#) (1)
[Tesa 61395 Tape](#) (1)

Step 1 — Rear Glass



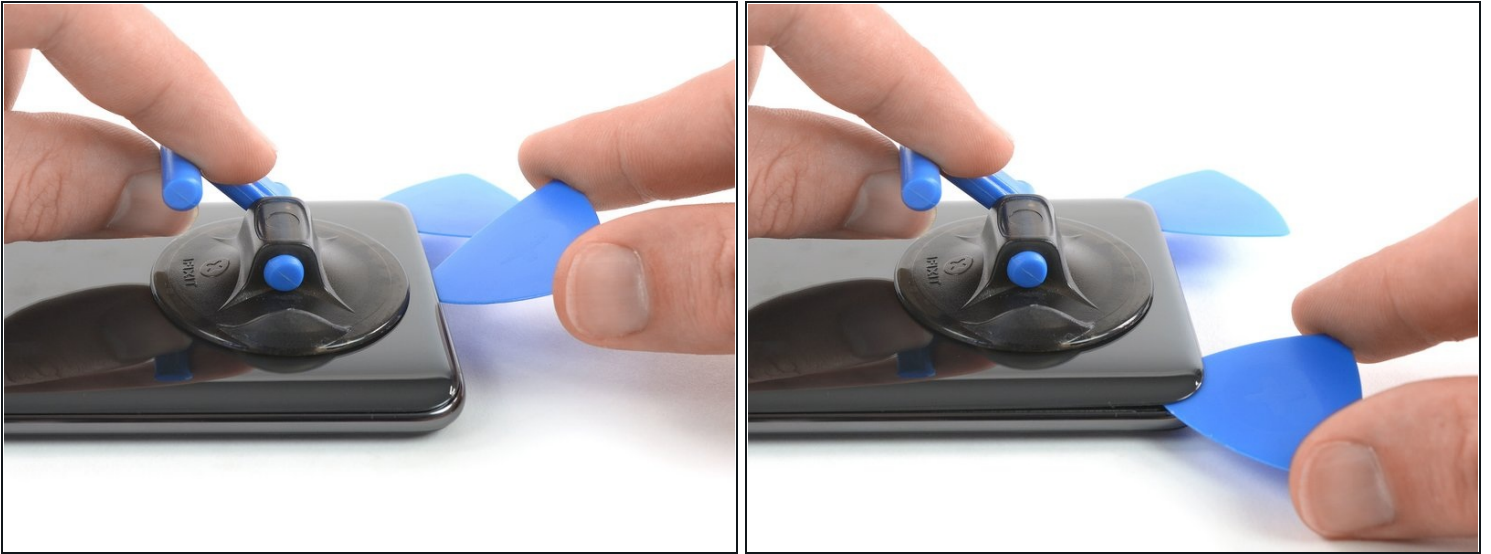
- Before you begin, switch off your phone.
- Apply a [heated iOpener](#) to the rear glass to loosen the adhesive beneath the edges. Apply the iOpener for at least two minutes.

Step 2



- Secure a suction handle to the lower edge of the rear glass, as close to the edge as possible.
 - ① If the phone's rear glass is cracked, the suction handle may not stick. Try [lifting it with strong tape](#), or superglue the suction handle in place and allow it to cure so you can proceed.
- Lift the rear glass with the suction handle to create a gap between the glass and the frame.
- Insert an opening pick into the gap.
 - ① If you have trouble, apply more heat to further soften the adhesive. Follow the iOpener instructions to avoid overheating.
- Slide the opening pick to the bottom right corner of the phone.

Step 3



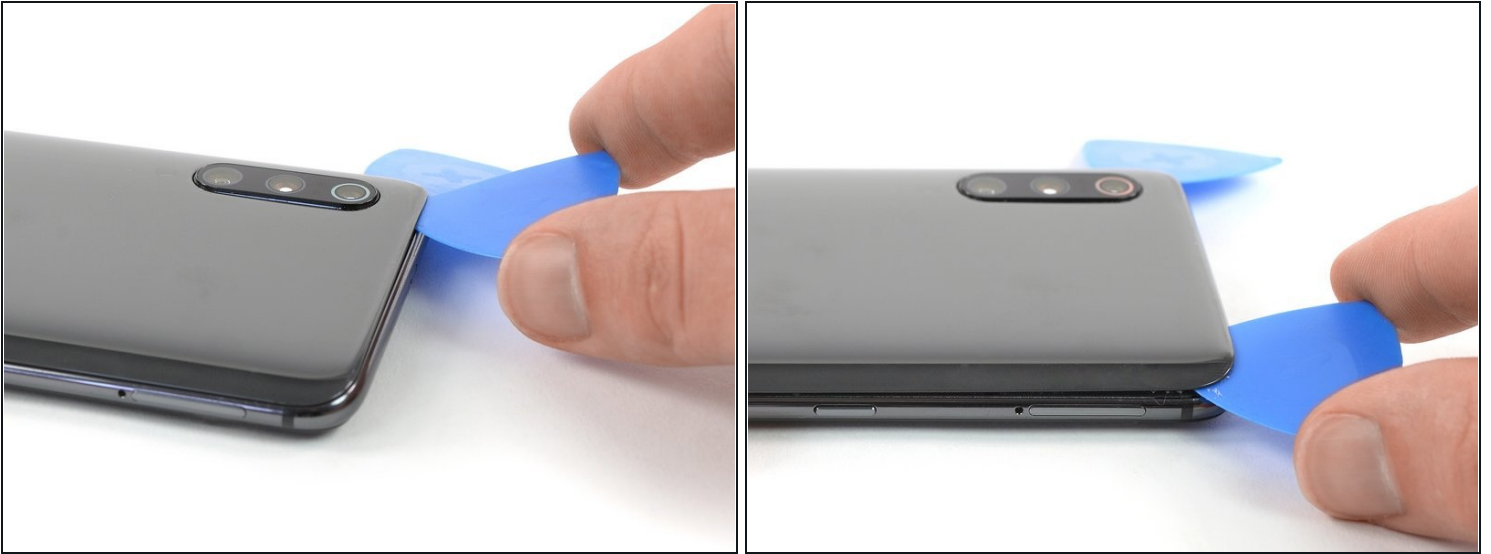
- Insert a second opening pick and slide it to the bottom left corner to cut the adhesive.
- Leave the opening picks in place to prevent the adhesive from resealing.

Step 4



- Insert a third opening pick at the bottom left corner.
- Start to slide the opening pick from the bottom left corner along the side of the Xiaomi Mi 9 to cut the adhesive.
 - ⓘ Be aware of the rear cameras and only insert the tip of the opening pick. As the adhesive cools down it gets harder to cut. If necessary [use your iOpener](#) to reheat it.
- Leave the opening pick in the top left corner to prevent the adhesive from resealing.

Step 5



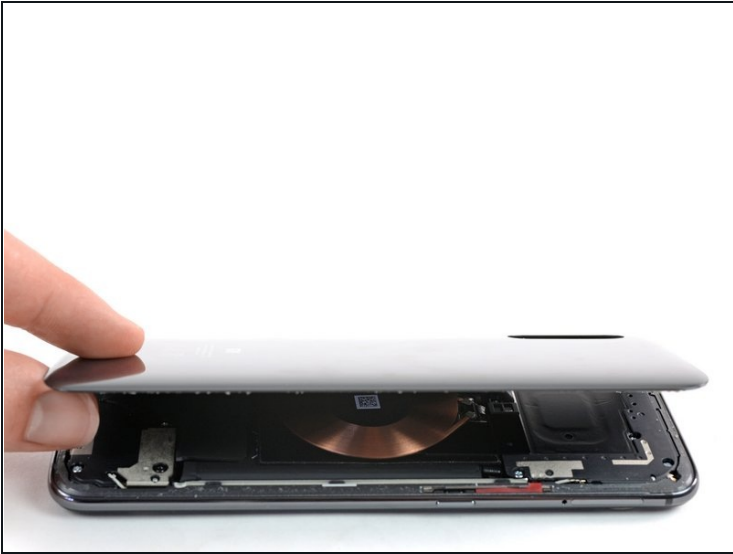
- Insert a fourth opening pick under the top left corner of the rear glass.
- Slide the opening pick along the top to cut the adhesive.
- Leave the opening pick in the top right corner to prevent the adhesive from resealing.

Step 6



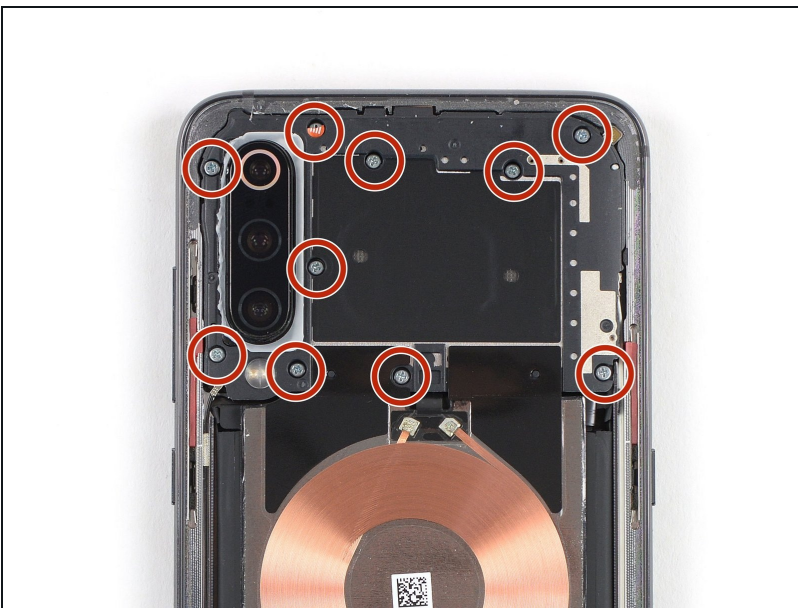
- Insert a fifth opening pick at the top right corner of the phone.
- Slide the opening pick along the right edge to cut the remaining adhesive.

Step 7



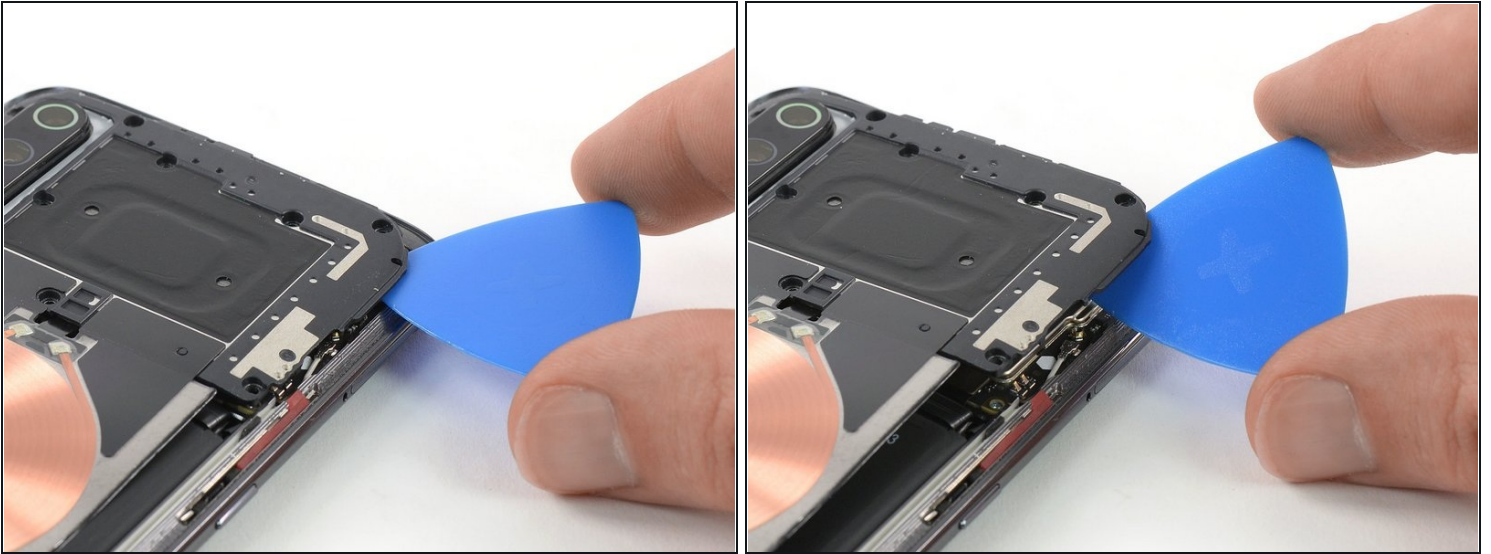
- Carefully lift the rear glass and remove it.
- ☑ Before installing new adhesive and reassembly, remove any remaining adhesive from the phone, and clean the glued areas with isopropyl alcohol and a lint-free cloth.

Step 8 — Motherboard Cover with Charging Coil



- Remove the ten Phillips #00 screws (3 mm length) that secure the motherboard cover.
- ⓘ There might be tamper proof sticker on some of the screws.

Step 9



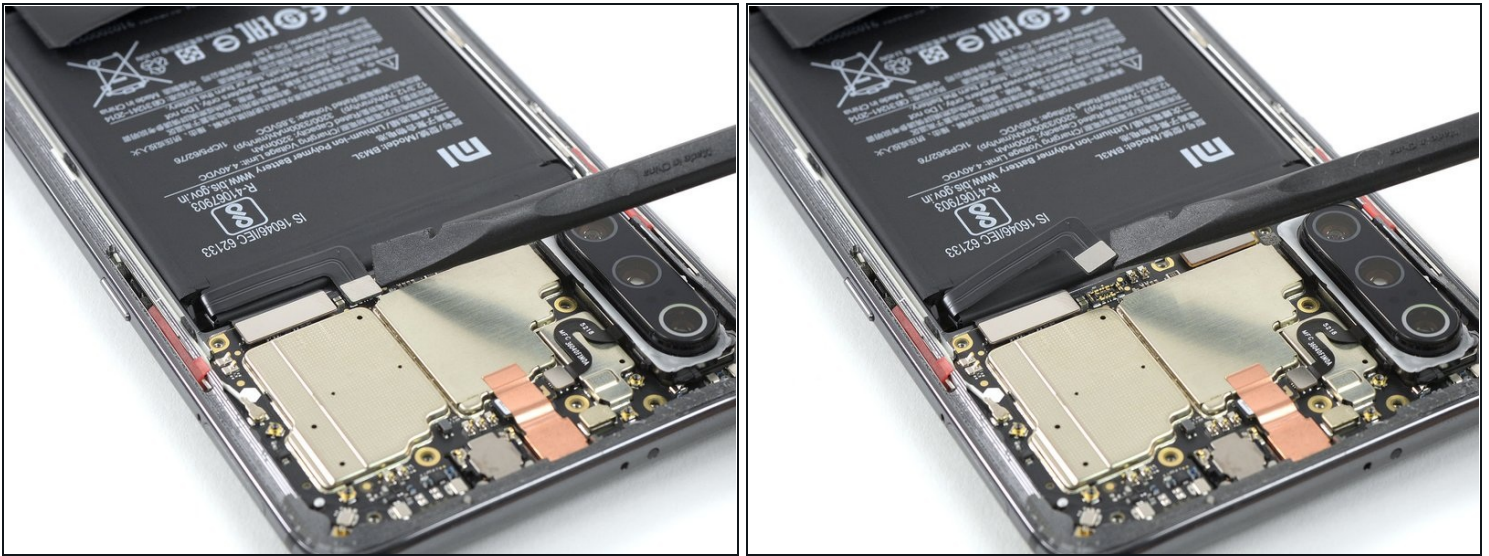
- Insert an opening pick at the top right corner of the motherboard cover.
- Twist the opening pick sideways to pry up and slightly lift the motherboard cover.

Step 10



- Carefully remove the motherboard cover including the charging coil / NFC antenna.

Step 11 — Battery Disconnect



- Use a spudger to pry up and disconnect the battery flex cable.

Step 12 — Loudspeaker Unit



- Remove the seven Phillips #00 screws securing the loudspeaker unit:
 - Four silver 3.2 mm long screws
 - Two yellowish 3.8 mm long screws
 - One black 2.8 mm long screw
- ⓘ Some screws may be hidden beneath tamper proof stickers.

Step 13



- Slide an opening pick under the right side of the loudspeaker unit.
- Twist the opening pick sideways to pry up the loudspeaker unit until you can get a good grip.

Step 14



⚠ There is still an antenna cable connected to the back of the unit.

- Carefully lift the loudspeaker unit and hinge it open towards the left side.

Step 15



- Use a pair of tweezers to pry off and disconnect the antenna cable from the loudspeaker unit.
- Remove the loudspeaker unit.
- ☑ Before reassembly check your old loudspeaker for components that might need to be transferred to the replacement part such as the antenna flex cable with its coax connector.

Step 16 — Battery



- Use a pair of tweezers to peel the black ends of the adhesive tabs off the battery.

Step 17



- Use a pair of tweezers to pull out the left adhesive tab from underneath the battery.
 - ① The adhesive tab underneath the battery can rip very easily. Make sure you pull out the tab in a slow and steady motion and in a flat angle. To prevent the adhesive tab from ripping, it's helpful to twist the strip around the tweezers.
 - ① In case one of the adhesive tabs rips and it's not possible to pull it out completely, you can use isopropyl alcohol or an [heated iOpener](#) to loosen the adhesive. After the adhesive is soft enough use a prying tool such as an opening pick or a [plastic card](#) to pry out the battery.

Step 18



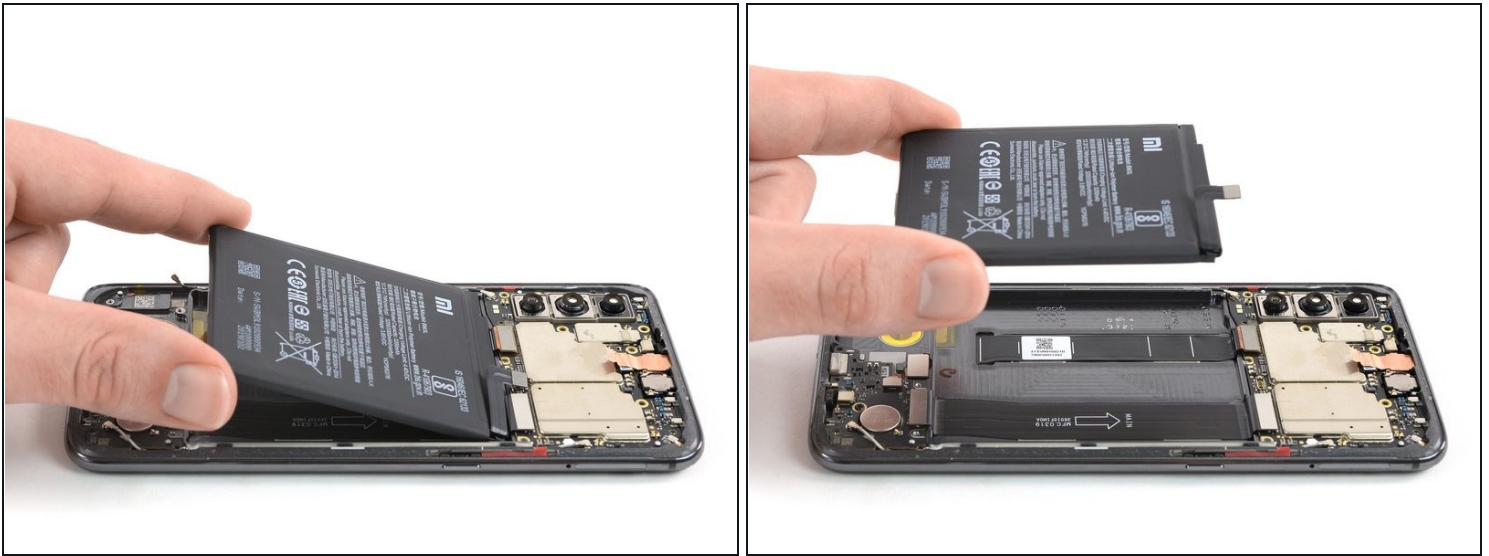
- Use a pair of tweezers to pull out the right adhesive tab from underneath the battery.

Step 19



- Use an opening pick to pry the battery out of its recess until you can get a good grip.

Step 20



- Remove the battery.

⚠ Reusing a deformed or bent battery after it has forcefully been removed, is a potential safety hazard. Replace it with a new battery.

- ☑ Remove any remaining adhesive from the midframe, and clean the glued areas with isopropyl alcohol and a lint-free cloth before applying new adhesive.

If possible, turn on your phone and **test your repair** before installing new adhesive and resealing the phone.

Secure the new battery with pre-cut adhesive or double-sided adhesive tape. In order to position it correctly, apply the new adhesive into the phone at the places where the old adhesive was located, not directly onto the battery. Press the new battery firmly into place.

For optimal performance, **calibrate your newly installed battery**: Charge it to 100%, and keep charging it for at least two more hours. Then, use it until it shuts off due to low battery. Finally, charge it uninterrupted to 100%

To reassemble your device, follow these instructions in reverse order.

Take your e-waste to an [R2 or e-Stewards certified recycler](#).

Repair didn't go as planned? Check out our [Answers community](#) for troubleshooting help.