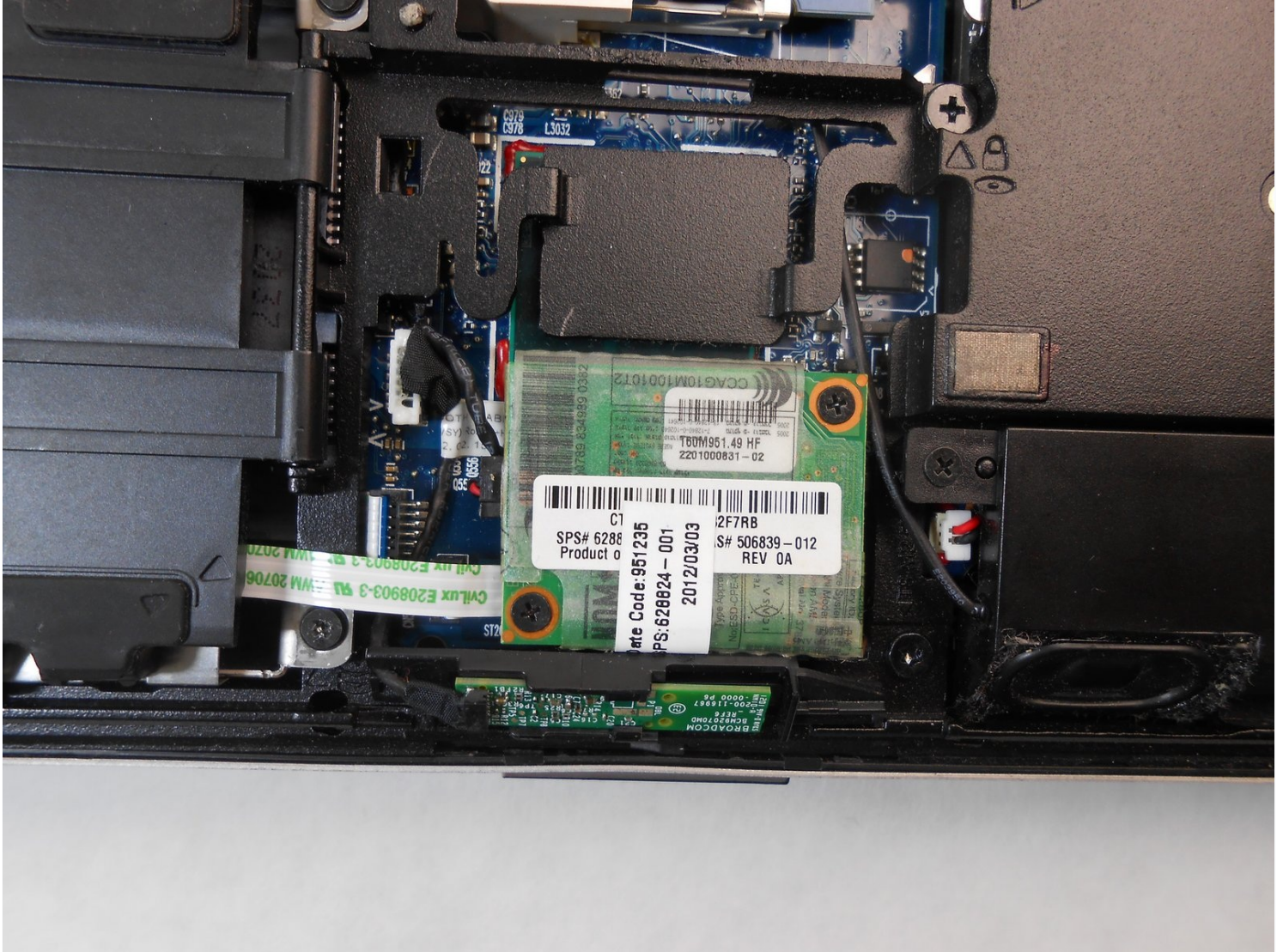




# HP Elitebook 8460p Modem Card Replacement

Use this guide to replace the modem card. The...

Written By: Garrett Anderson



# INTRODUCTION

Use this guide to replace the modem card. The modem card connects to the Firewire port on the back side of the HP Elitebook 8460p.

Not many computers today use Firewire, however, if you have the need to utilize the Firewire port on the back of your computer and the connection is not working, double check the condition of the modem card and the connection to the modem card inside the laptop.

Before opening the case, make sure you are grounded with an ESD strap to prevent electrostatic discharge from damaging other electrical components within the laptop.

To complete this guide, you will need a Phillips #0 screw driver and an ESD strap.

---

## TOOLS:

Phillips #0 Screwdriver (1)

---

### Step 1 — Battery



- On the back of the computer, slide the left switch towards the outside of the laptop until you hear a click.

## Step 2



- Slide the battery away from the switches until it can be lifted away from the laptop.
- Lift the battery away from the laptop.

## Step 3 — Back Panel



- On the back of the laptop, slide the right switch toward the outside of the laptop until you hear a click.

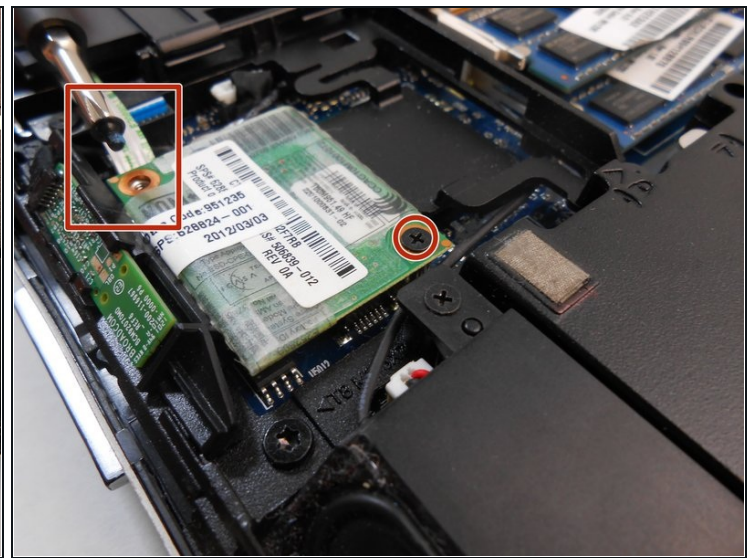
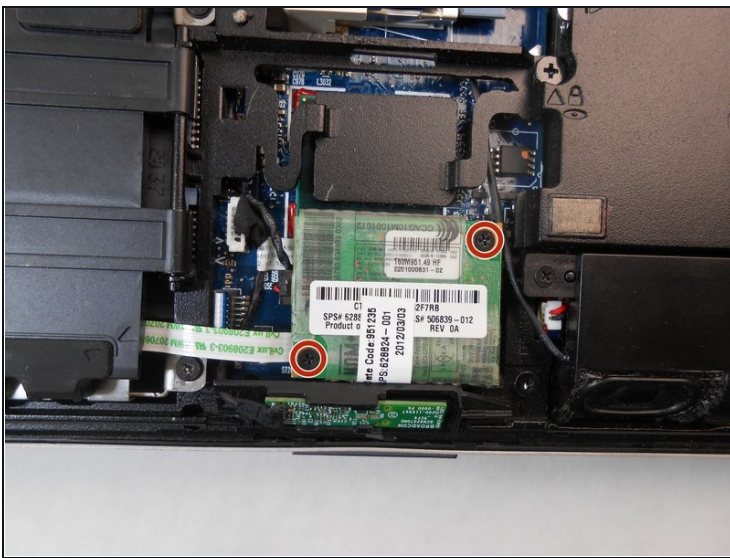


## Step 4



- Slide the back shell of the laptop away from the switches until it can be lifted up.
- Lift the shell straight up.

## Step 5 — Modem Card



⚠ Attach an ESD strap to your wrist and to a ground.

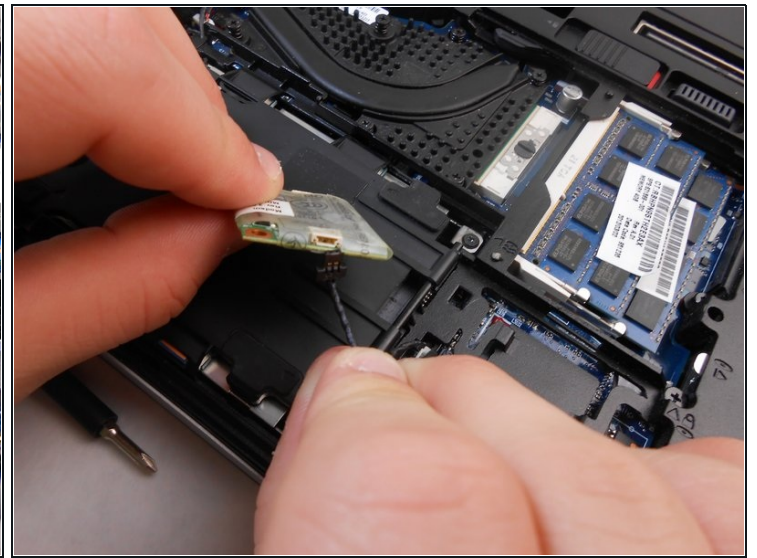
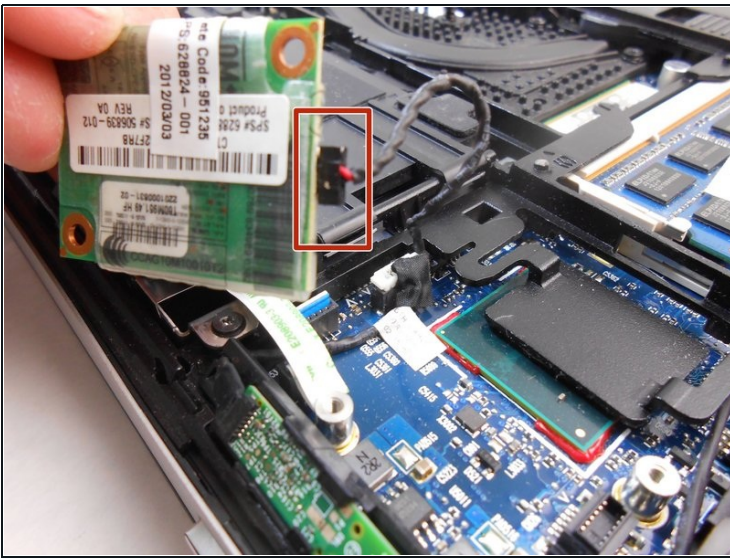
- Using a Phillips #0 bit, remove the two 3.0 mm screws and set them off to the side side on a magnetic surface.

## Step 6



- Push down on one corner of the sound card and lift it straight up.

## Step 7



- Disconnect the wire plug by grasping the sound card in one hand and the wire in another and pulling them apart.

To reassemble your device, follow these instructions in reverse order.