



Sony Xperia Z5 Battery Replacement

Use this guide to remove or replace a worn-out...

Written By: Dominik Schnabelrauch



INTRODUCTION

Use this guide to remove or replace a worn-out battery in a Sony Xperia Z5.

If your battery is swollen, [take appropriate precautions](#). For your safety, **discharge your battery below 25%** before disassembling your phone. This reduces the risk of a dangerous thermal event if the battery is accidentally damaged during the repair.

If you do not replace the adhesive seals when reassembling, your device will function normally, but will most likely lose its water-protection.

You'll need **replacement adhesive** to reattach components when reassembling the device.



TOOLS:

[Suction Handle](#) (1)
[iOpener](#) (1)
[Spudger](#) (1)
[ESD Safe Blunt Nose Tweezers](#) (1)
[iFixit Opening Picks \(Set of 6\)](#) (1)



PARTS:

[Sony Xperia Z5 Back Cover Adhesive](#) (1)
[Sony Xperia Z5 Battery](#) (1)
[Tesa 61395 Tape](#) (1)

Step 1 — Back Cover



- Before you begin, switch off your phone.
- Apply a [heated iOpener](#) to the edges on the back of the phone to loosen the adhesive beneath the rear glass. Apply the iOpener for at least two minutes.

Step 2



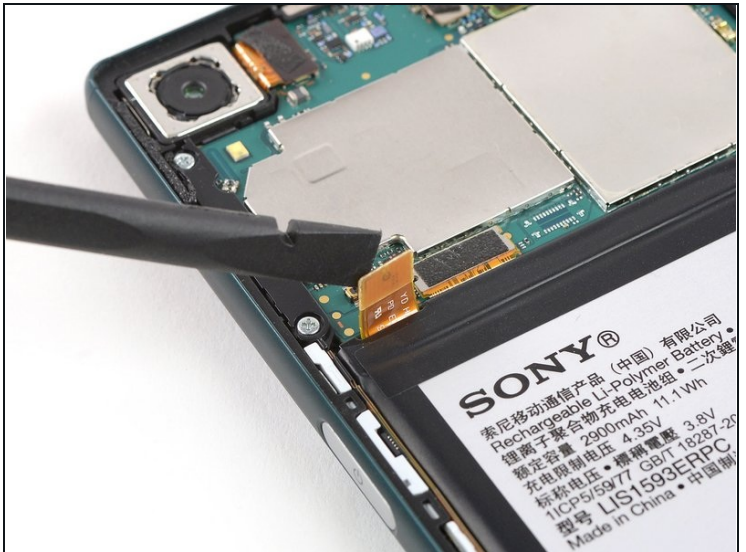
- Secure a suction handle to the bottom of the rear glass, as close to the edge as possible.
 - Pull up the suction handle to generate a gap.
 - Insert an opening pick into the gap to further separate the rear glass from the phone assembly.
- ⓘ The adhesive of the Xperia Z5 is fairly weak and it is possible to remove the rear glass without the use of an opening pick. In case you're having trouble you can have a peek at the opening procedure of the [Xperia Z4](#).

Step 3



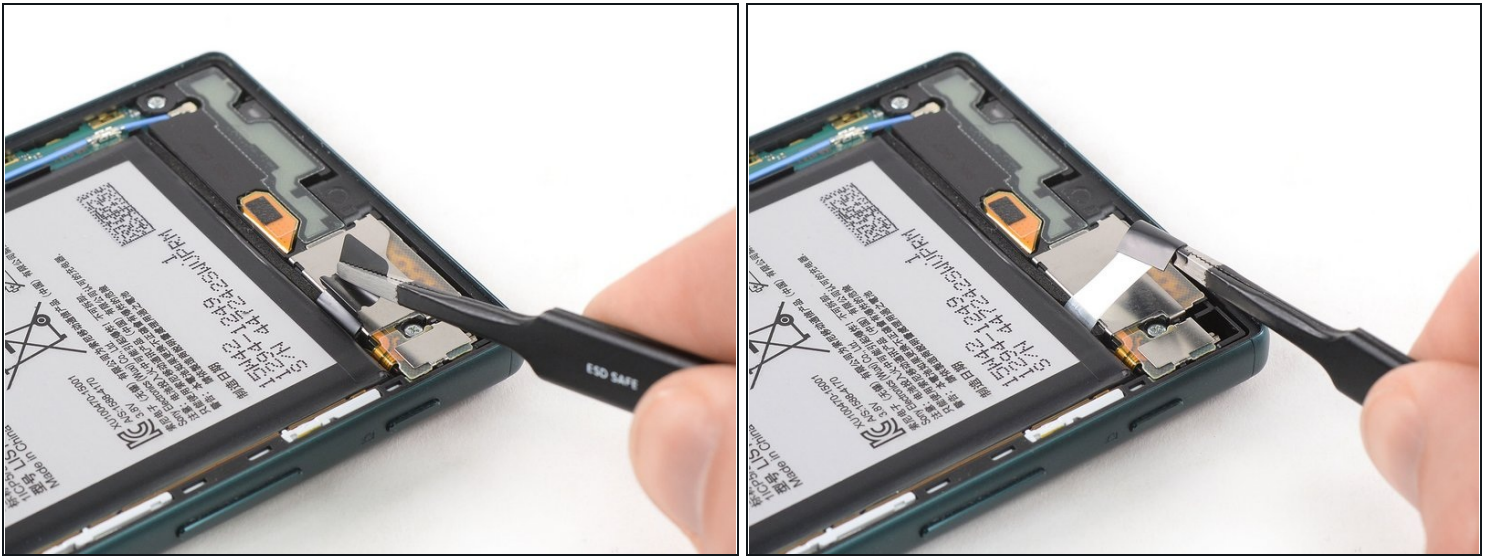
- Carefully lift and remove the rear glass.
 - ☑ After installing the rear glass, apply strong, steady pressure to your phone for several minutes to help the adhesive form a good bond—a stack of heavy books works well.

Step 4 — Battery Disconnect



- Use a spudger to pry up and disconnect the battery flex cable.

Step 5 — Battery



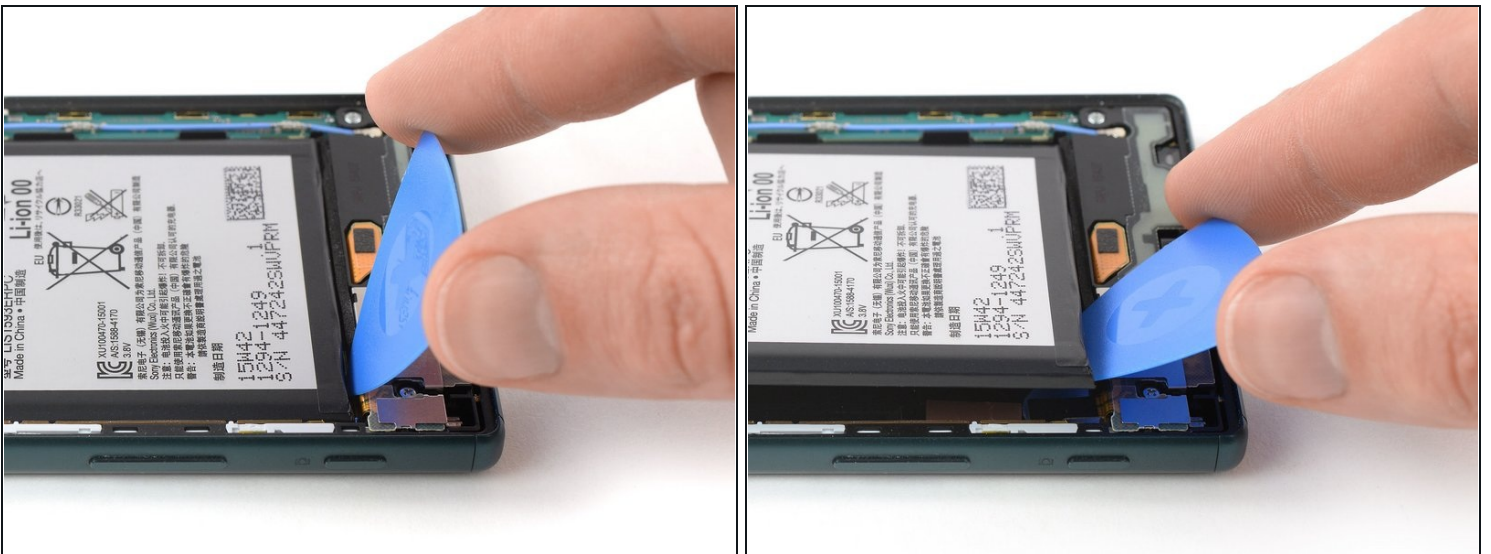
- ① The adhesive strips underneath the battery can rip very easily. Make sure you pull at the tabs in a slow and steady motion and in a flat angle. To prevent the adhesive strip from ripping, it's helpful to twist it around the tweezers.
- Use a pair of tweezers to pull out the first adhesive strip from underneath the battery.
 - ① In case one of the adhesive strips rips and it's not possible to pull it out completely, you can use isopropyl alcohol or an [heated iOpener](#) to loosen the adhesive. After the adhesive is soft enough use a prying tool such as an opening pick or a [plastic card](#) to pry out the battery.

Step 6



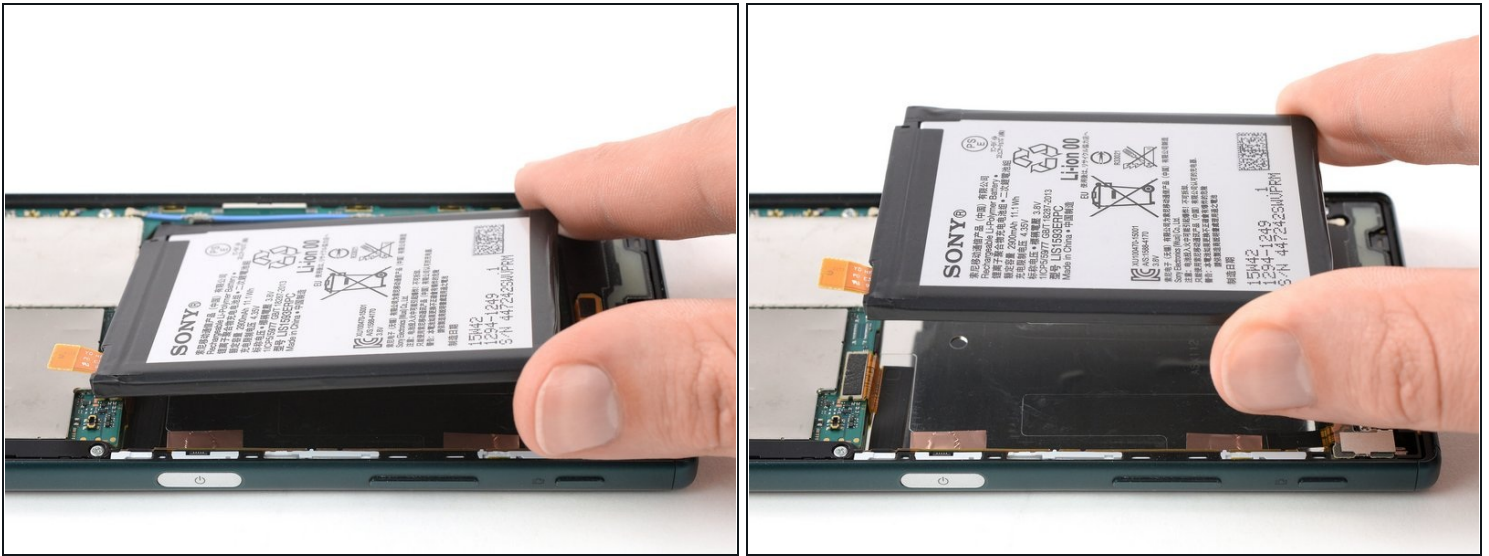
- Use a pair of tweezers to pull out the second adhesive strip from underneath the battery.

Step 7



- Use an opening pick to pry the battery out of its recess until you can get a good grip.

Step 8



- Remove the battery.

⚠ In case one of the adhesive strips ripped and you had to use a prying tool to remove the battery please consider this: Reusing a deformed or bent battery after it has forcefully been removed, is a potential safety hazard. Replace it with a new battery.

- ☑ Remove any remaining adhesive from the midframe, and clean the glued areas with isopropyl alcohol and a lint-free cloth before applying new adhesive.

If possible, turn on your phone and **test your repair** before installing new adhesive and resealing the phone.

Secure the new battery with pre-cut adhesive or double-sided adhesive tape. In order to position it correctly, apply the new adhesive into the phone at the places where the old adhesive was located, not directly onto the battery. Press the new battery firmly into place.

For optimal performance, **calibrate your newly installed battery**: Charge it to 100%, and keep charging it for at least two more hours. Then, use it until it shuts off due to low battery. Finally, charge it uninterrupted to 100%

To reassemble your device, follow these instructions in reverse order.

Take your e-waste to an [R2 or e-Stewards certified recycler](#).

Repair didn't go as planned? Check out our [Answers community](#) for troubleshooting help.