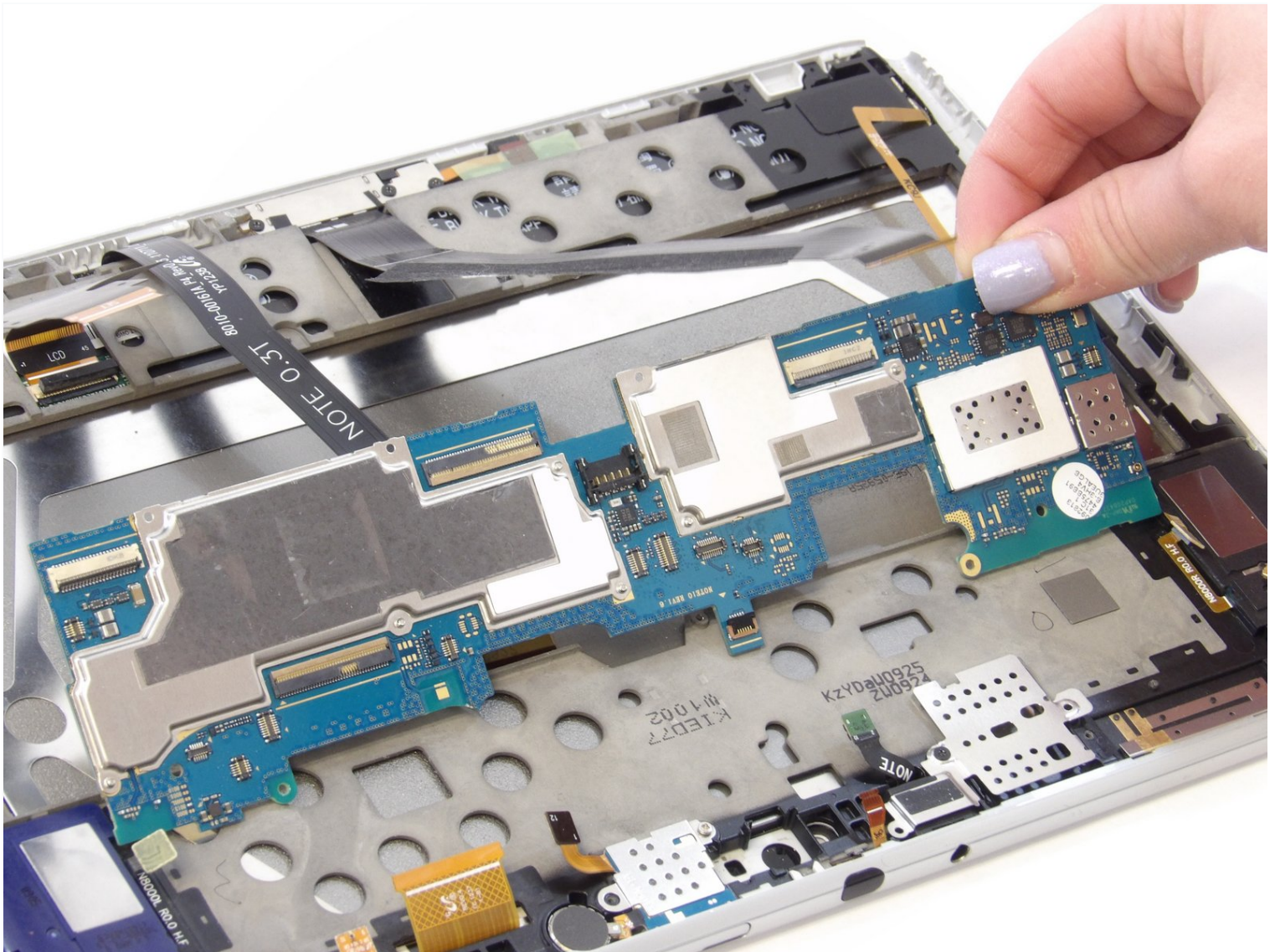




# Samsung Galaxy Note 10.1 Motherboard Replacement

In this guide, you will learn how to replace...

Written By: Rachel Dykes



# INTRODUCTION

In this guide, you will learn how to replace the motherboard in a Samsung Galaxy Note 10.1 2012 tablet.

The motherboard connects all of the other components together so that the tablet can operate. Without it, nothing else would function.

Before using this guide, check out the [troubleshooting page](#) for the tablet. This is a crucial step because it is difficult to determine when a motherboard is faulty. The issue could be caused by another component, rather than the motherboard itself.

---

## TOOLS:

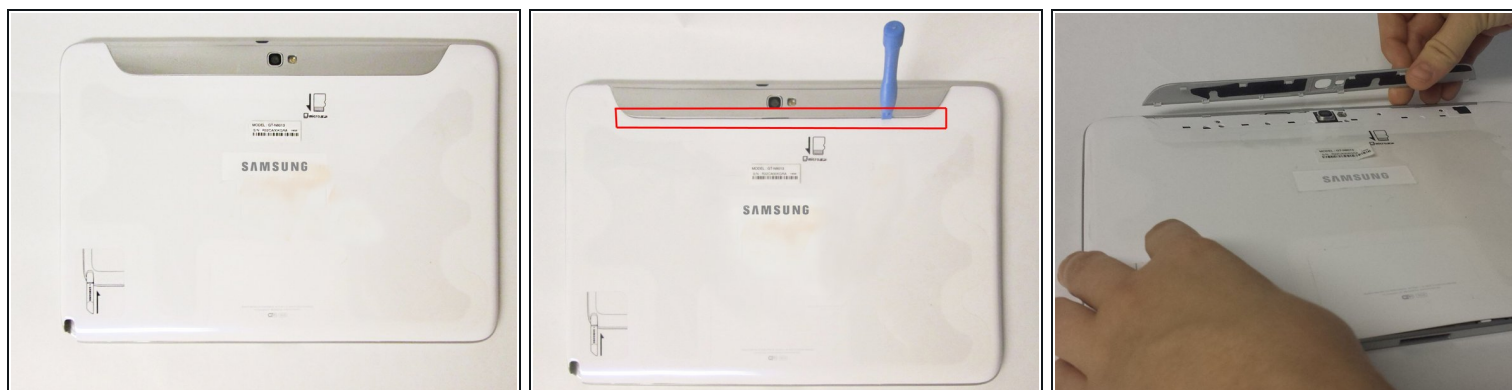
[iFixit Opening Tool](#) (1)  
[Phillips #00 Screwdriver](#) (1)  
[Spudger](#) (1)  
[Tweezers](#) (1)

## PARTS:

[Galaxy Note 10.1 \(2012\) Rear Panel](#) (1)  
[Galaxy Note 10.1 \(2012\) Battery](#) (1)  
[Galaxy Note 10.1 \(2012, Wi-Fi\)](#)  
[Motherboard](#) (1)

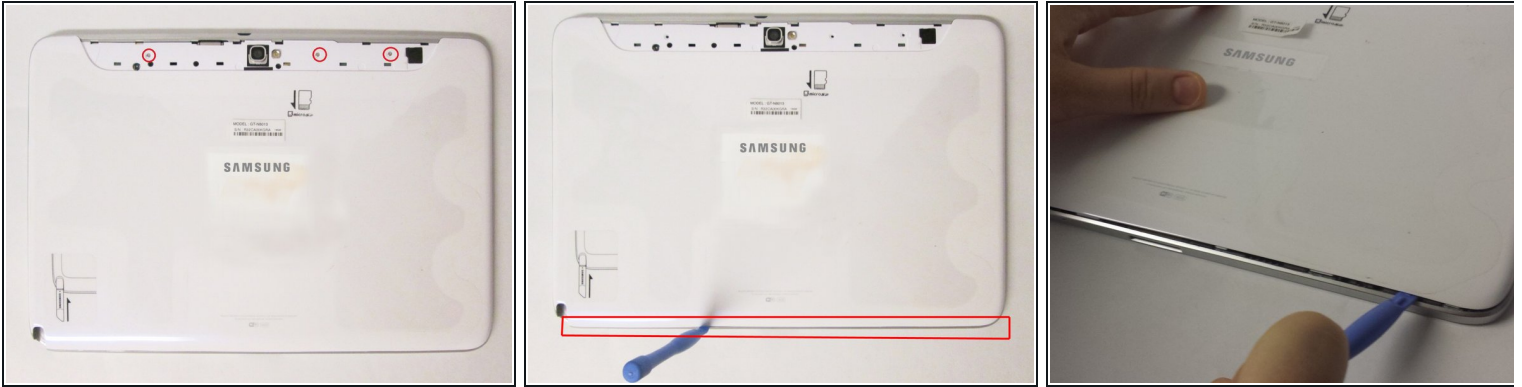
---

## Step 1 — Removing the Top Piece



- This is the back of the device and where you will begin to take it apart
- It is necessary to remove this piece first before removing the bigger back piece.
- Use the plastic opening tools to pry along the indicated box.
- Lift up the silver piece to reveal the rest of the back cover.

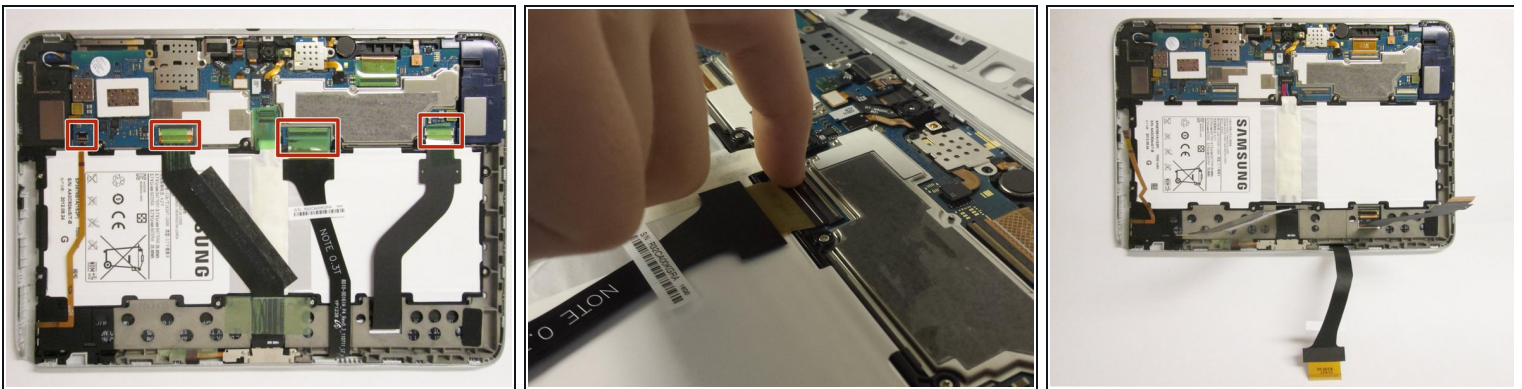
## Step 2 — Removing the Back Cover



- Unscrew the three 5 mm screws indicated by the red circles with the Philips #00 screwdriver.
- Using the plastic opening tools pry along the bottom of the device, moving to the sides of the cover to the top.
- Remove the back cover.

⚠ At this point use anti-static gloves or do **NOT** take it apart on carpet.

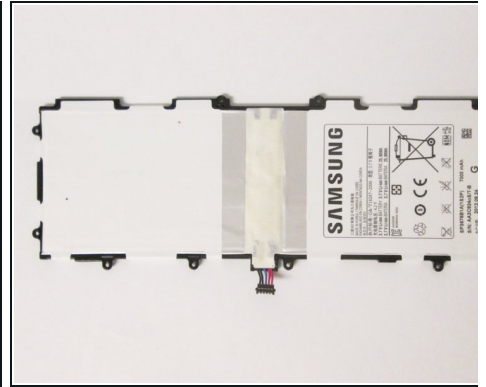
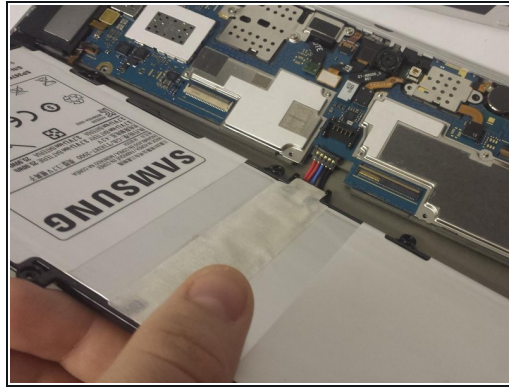
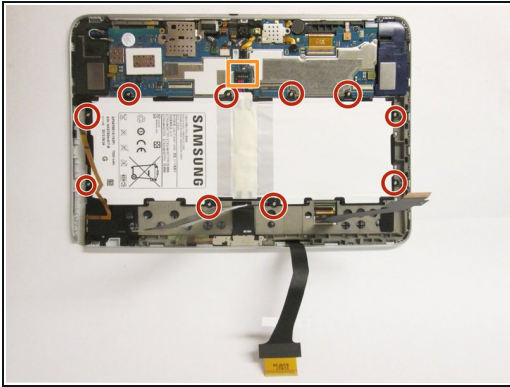
## Step 3 — Removing components covering battery



- Carefully remove all of the ribbons that connect over the battery.

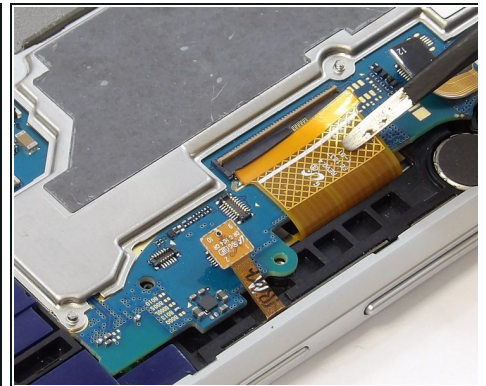
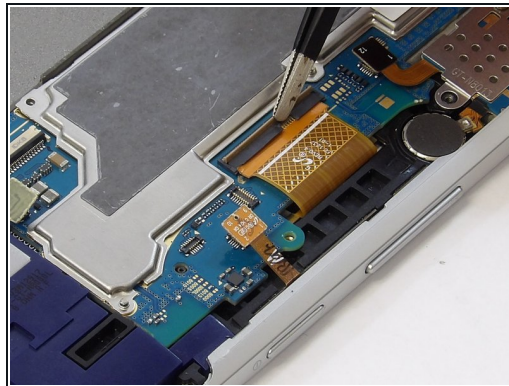
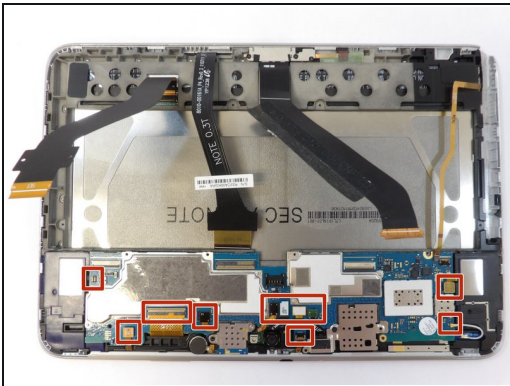


## Step 4 — Removing the Battery



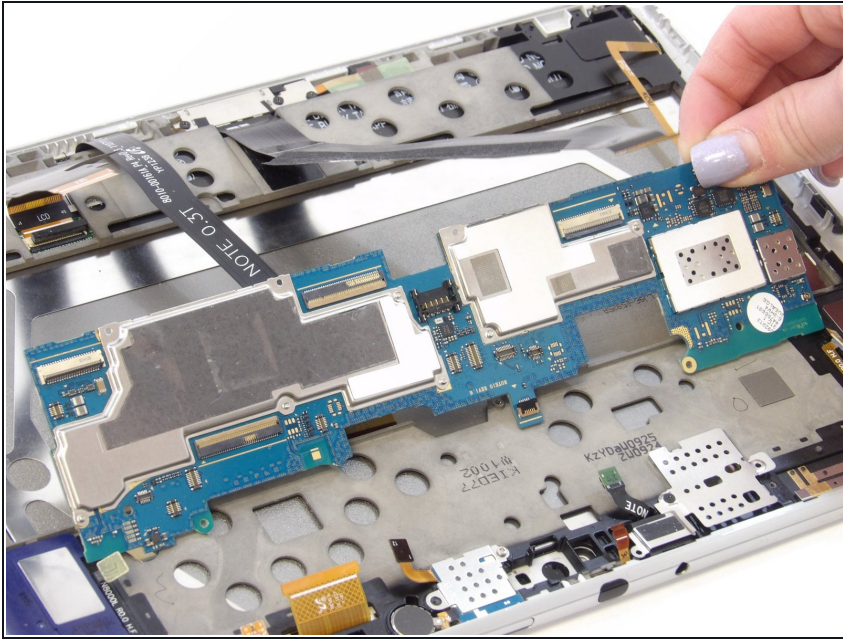
- Remove all of the 3 mm screws indicated by a red circle with the #00 Philips Screwdriver.
- Disconnect the battery connector from the motherboard.
- Now you may remove the battery. The replacement battery should be 3.7 Volts and 25.9 kWh.

## Step 5 — Motherboard



- ⓘ Flip the tablet 180 degrees for this step so the motherboard is easier to access.
  - Disconnect the cable connectors from the motherboard by gently lifting the connection hubs.
  - Remove each ribbon cable by lifting the locking mechanism on the casing holding the cable.
  - Gently pull the ribbon cable from the casing with your fingers or tweezers.
- ⚠ Carefully remove ribbon cables. Ribbon cables are easy to damage and may not always appear damaged. Any damage could potentially cause your device not to work.

## Step 6



- Remove the motherboard by gently sliding it out of its casing.

To reassemble your device, follow these instructions in reverse order.