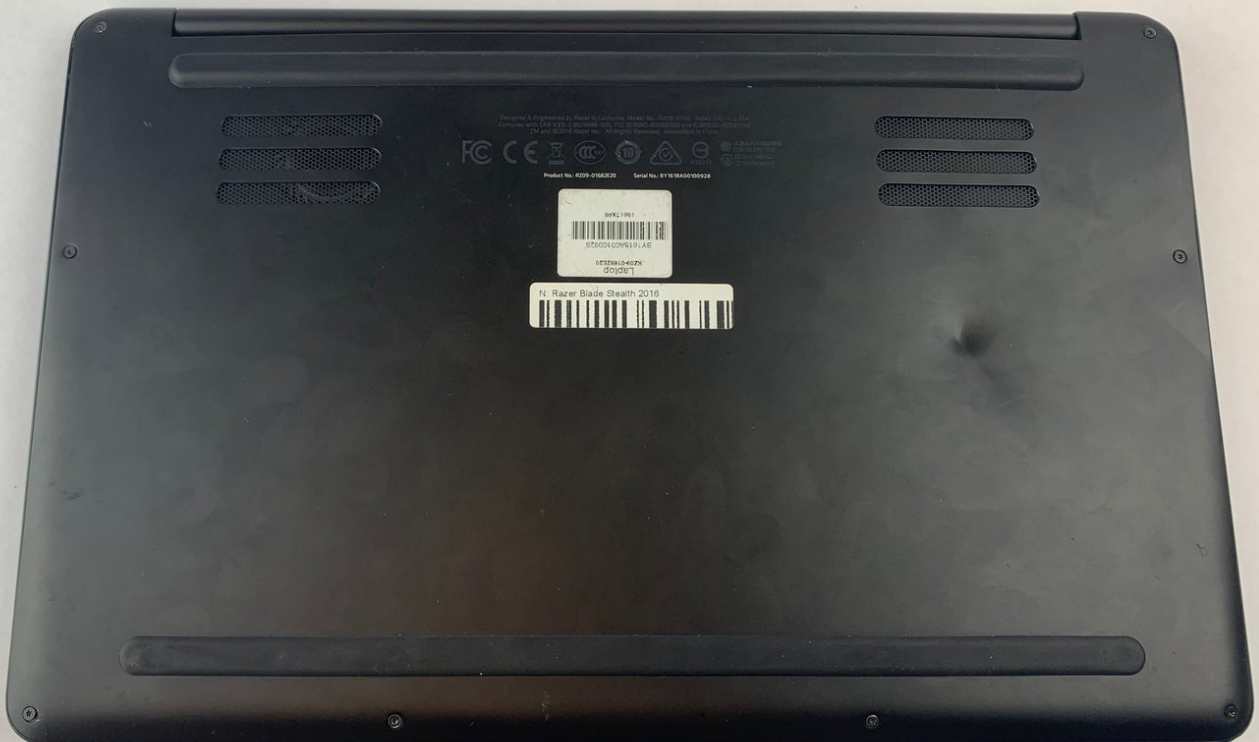




# Razer Blade Stealth 2016 Hard Drive Replacement

The hard drive is vital in any laptop as it...

Written By: Lindsay Grant



## INTRODUCTION

The hard drive is vital in any laptop as it stores all your data and if it does not work properly then you can lose out on all your important photos and data.

The hard drive might not be functioning correctly if your laptop says there is no hard drive detected or the computer crashes constantly.

Follow this guide to replace the hard drive on your Razer Blade Stealth 2016.

Make sure the laptop is powered off before beginning this guide.



### TOOLS:

- [Phillips #00 Screwdriver](#) (1)
- [T5 Torx Screwdriver](#) (1)



### PARTS:

- [Crucial P3 NVMe PCIe M.2 2280SS SSD - solid performance, switching from HDD or SATA to NVMe™](#) (1)
- [Crucial P3 Plus NVMe PCIe M.2 2280SS SSD - fast Gen4 NVMe™ storage for data-intensive applications](#) (1)
- [Crucial P5 Plus NVMe PCIe M.2 2280SS SSD - professionals, creatives, and hardcore gamers](#) (1)

## Step 1 — Hard Drive



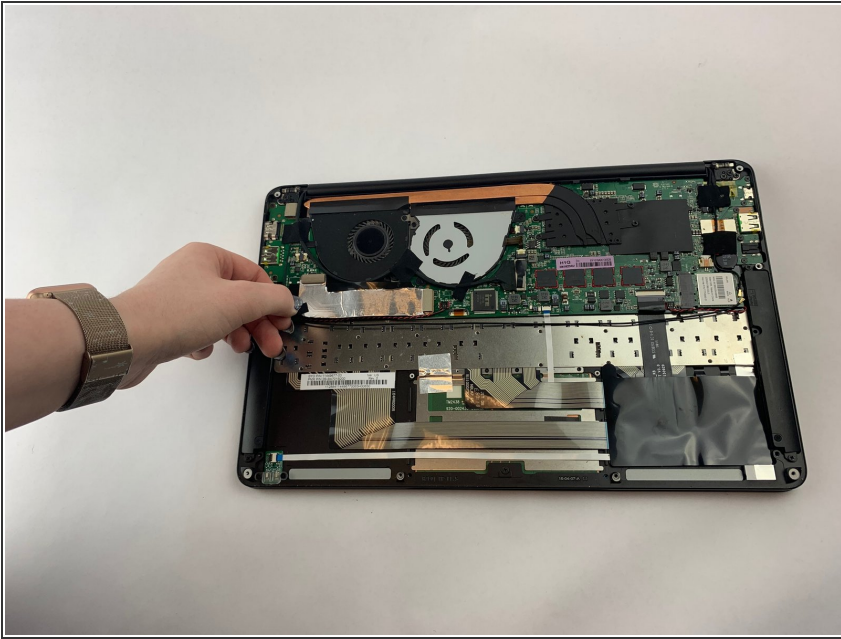
- Turn the laptop upside down!

## Step 2



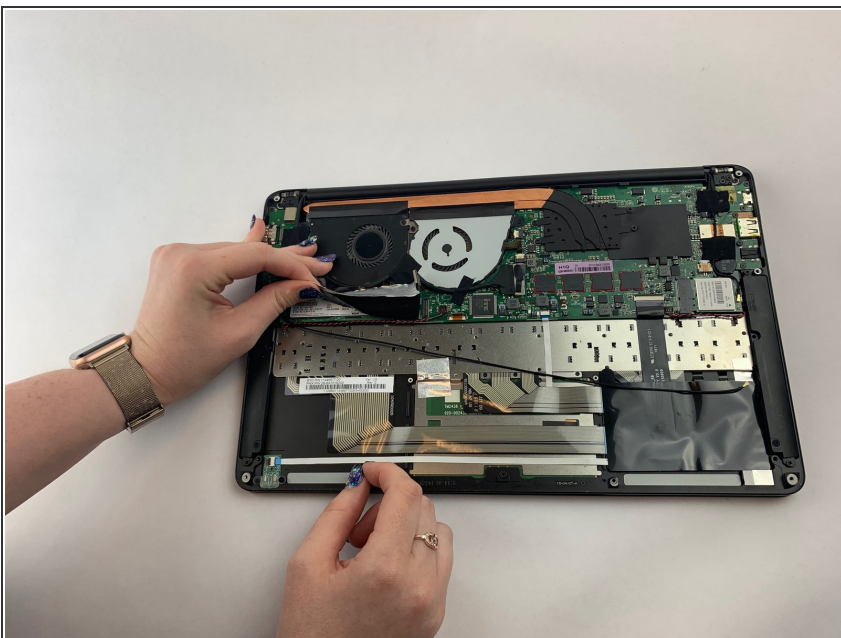
- There are 10 screws in total, they can be found at the red circles shown in the picture!
- ⓘ NOTE : you need to use a T5 screwdriver!

## Step 3



- The hard drive is located under the fan on the left side as shown in the picture!

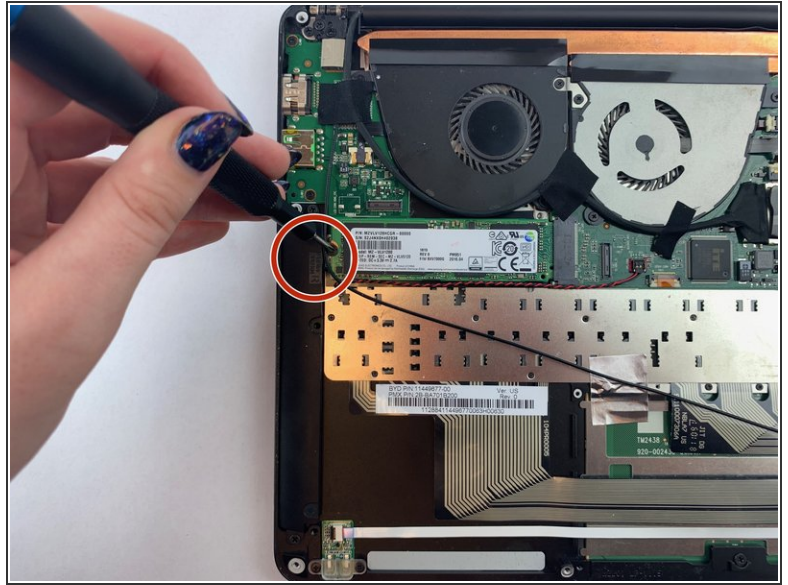
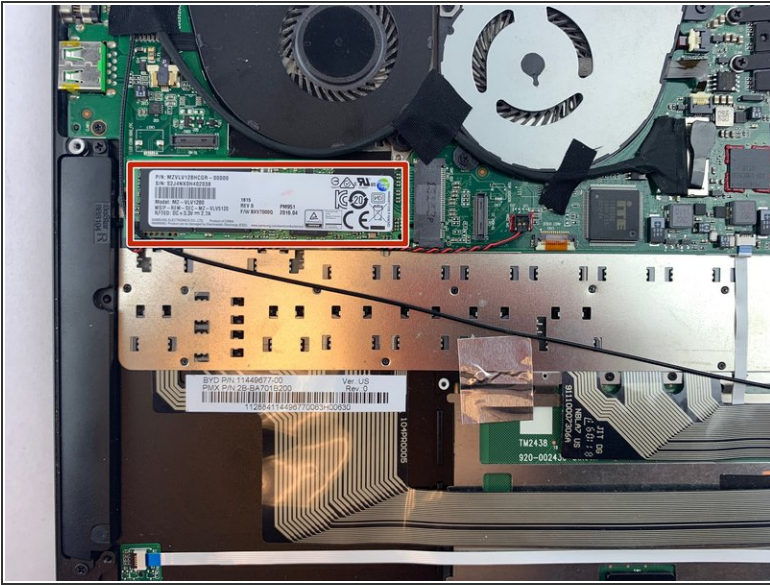
## Step 4



- The hard drive is located under the fan on the left side.
- Slowly peel back the silver piece and black tape beneath it to reveal the hard drive.

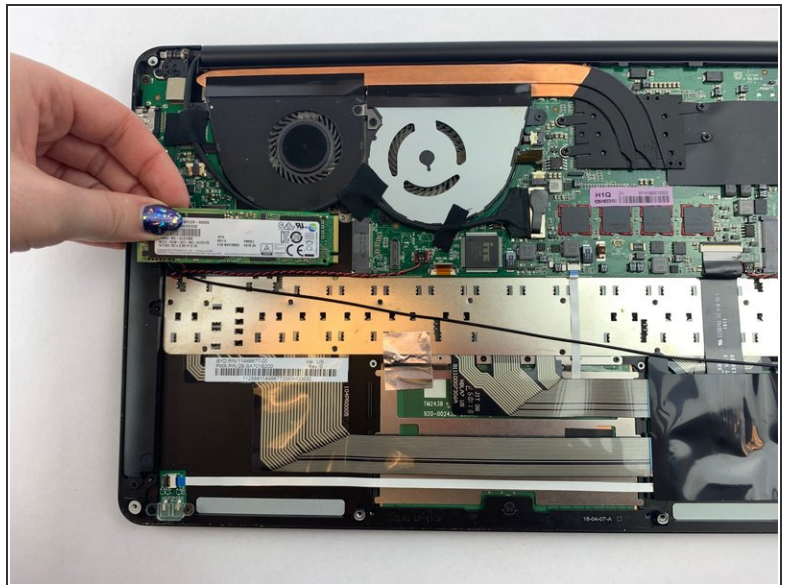
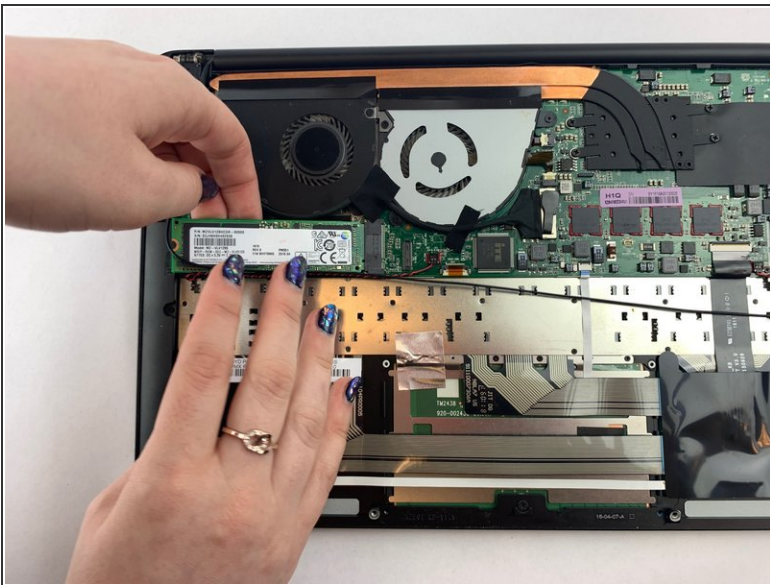


## Step 5



- Using a Phillips screwdriver, remove the 2.5 mm screw on the left side of the hard drive.
- After you unscrew the hard drive, it will pop out by itself
- ⓘ The Phillips screw driver is included in the kit that was provided on step 2!

## Step 6



- Carefully slide the hard drive out from its slot.

To reassemble your device, follow these instructions in reverse order.