



Hamilton Beach "Keep Warm" Toaster 22811 Teardown

How to take apart a Hamilton Beach Toaster

Written By: Alexander Yazdani





TOOLS:

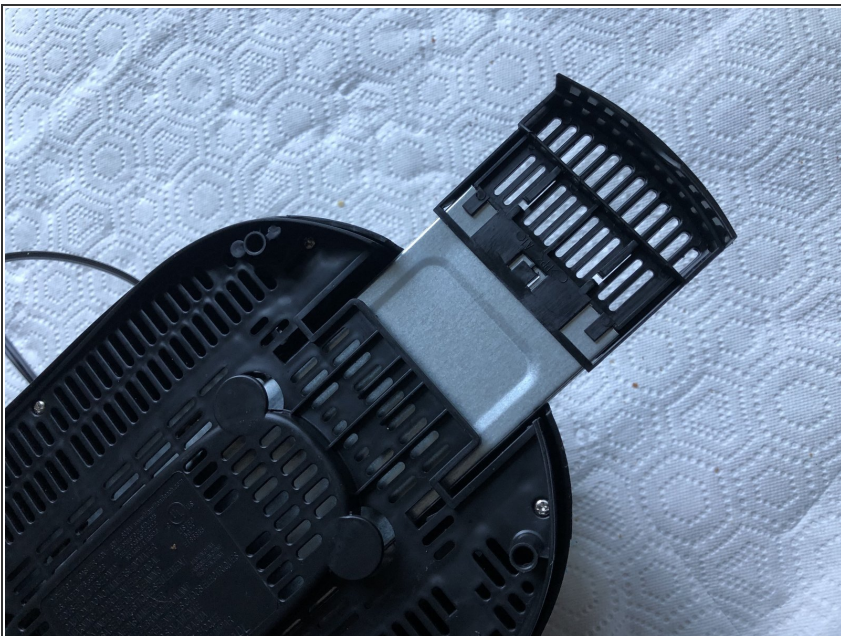
- [Phillips #0 Screwdriver](#) (1)
 - [Flat-blade Screwdriver](#) (1)
-

Step 1 — Hamilton Beach "Keep Warm" Toaster 22811 Teardown



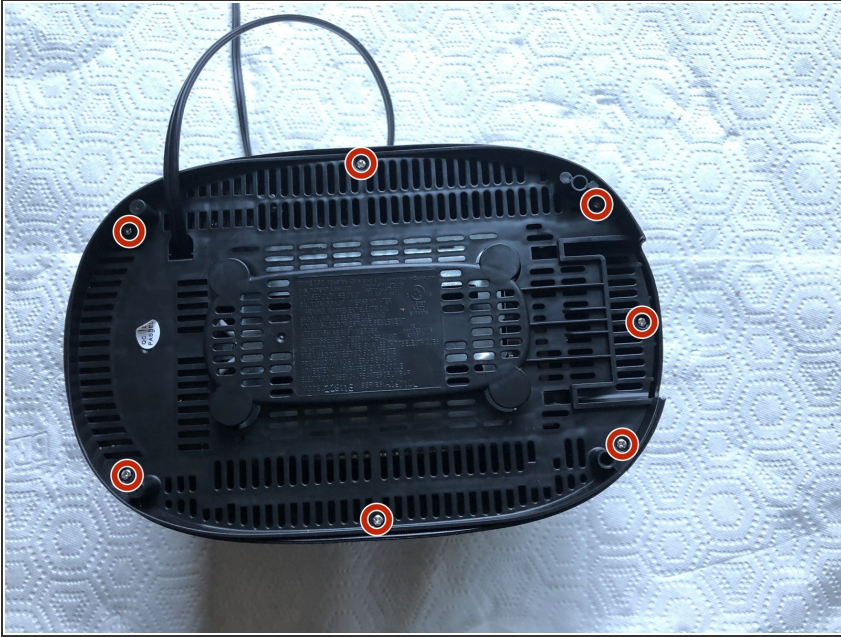
- Unplug toaster from wall.
- ⚠ Do not take apart a toaster that is plugged in.
- If toaster has been used, lay down paper towels or work outside to avoid making a mess.

Step 2



- Remove crumb tray from bottom of toaster.

Step 3



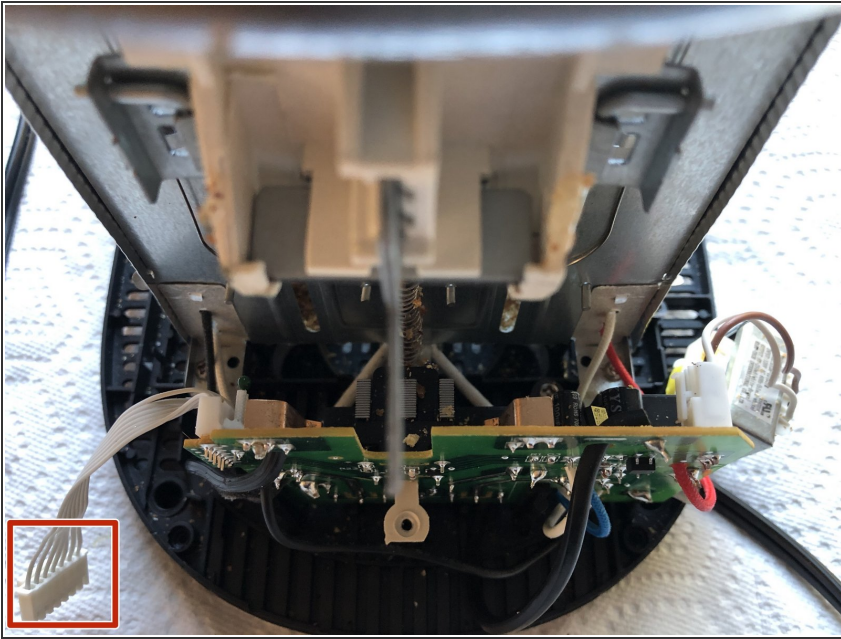
- Remove these 7 screws from bottom of toaster.

Step 4



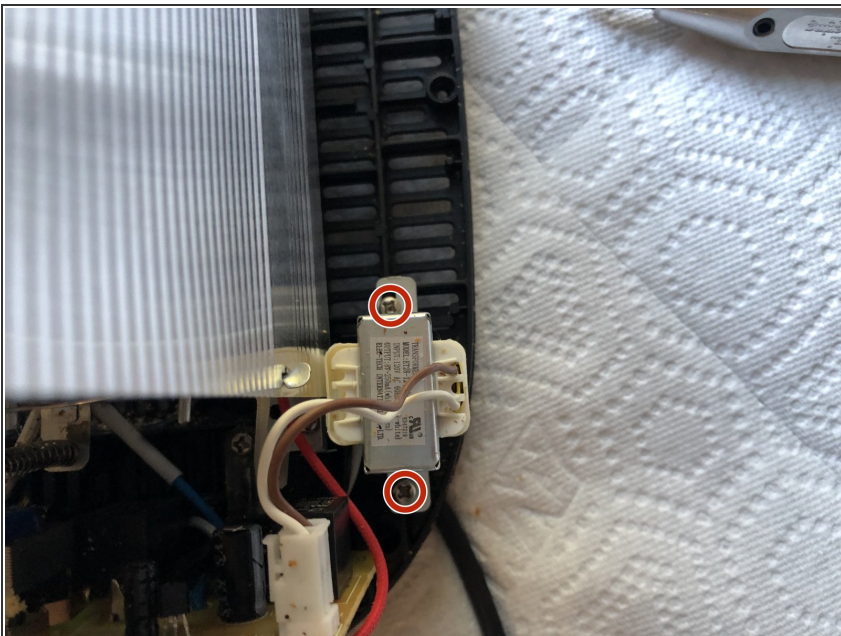
- Remove bread lifter/toast booster by prying it off. The plastic piece snaps over the metal part during assembly. Use a flat-blade screw driver from the side to widen the gap in the plastic clip while pulling the plastic handle out. Done right the handle can later be reassembled securely.

Step 5



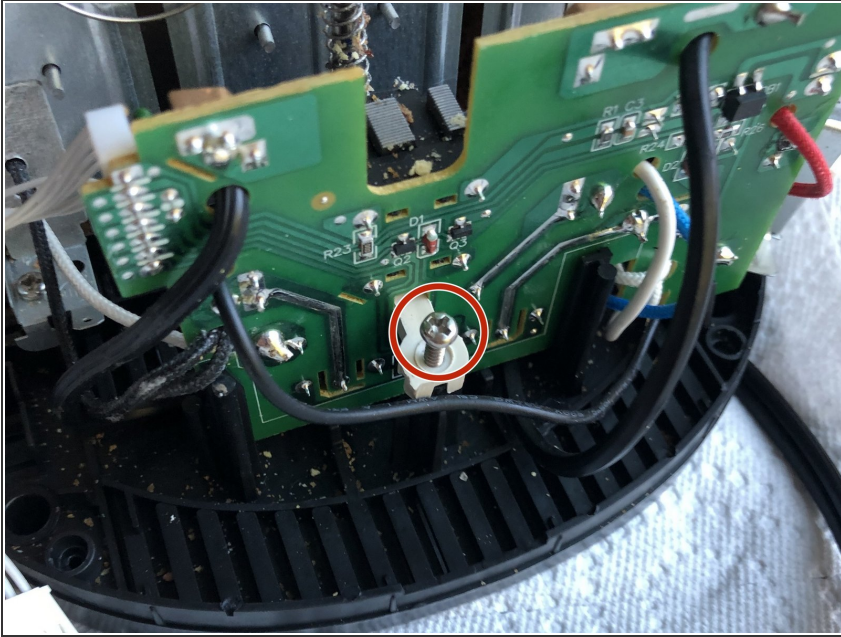
- Disconnect the two circuits by unplugging the wires shown. This can be done by pressing the lever on the crimps. Then the shell can be pulled off from the rest of the toaster.

Step 6



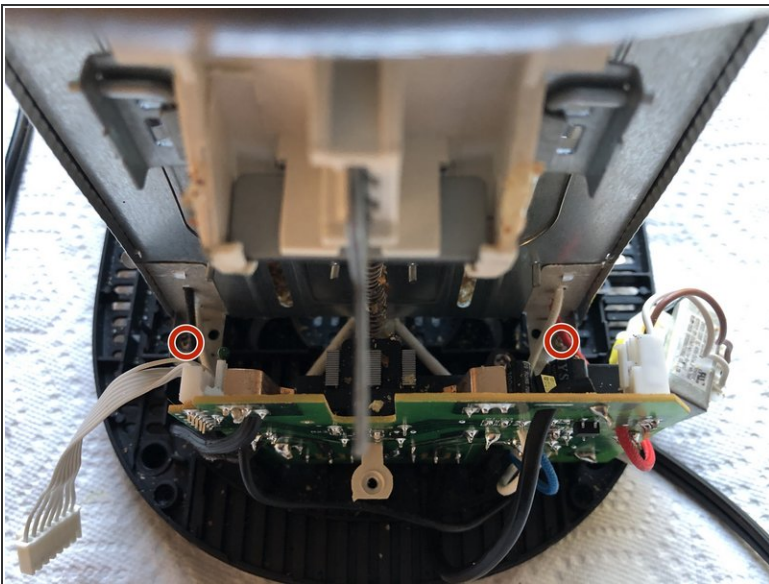
- Remove these 2 screws.

Step 7



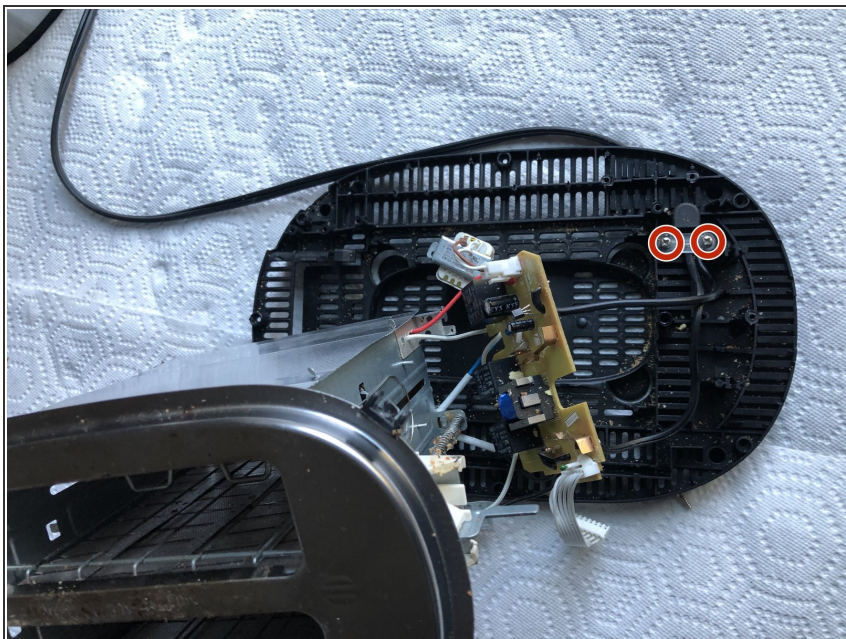
- Remove this screw.

Step 8



- Remove these 4 screws.

Step 9



- Pull apart toaster components. If power cable needs to be removed or adjusted, unscrew the screws circled.

Step 10



- If the circuit for the buttons and shade selector needs to be removed, unscrew these 4 screws.