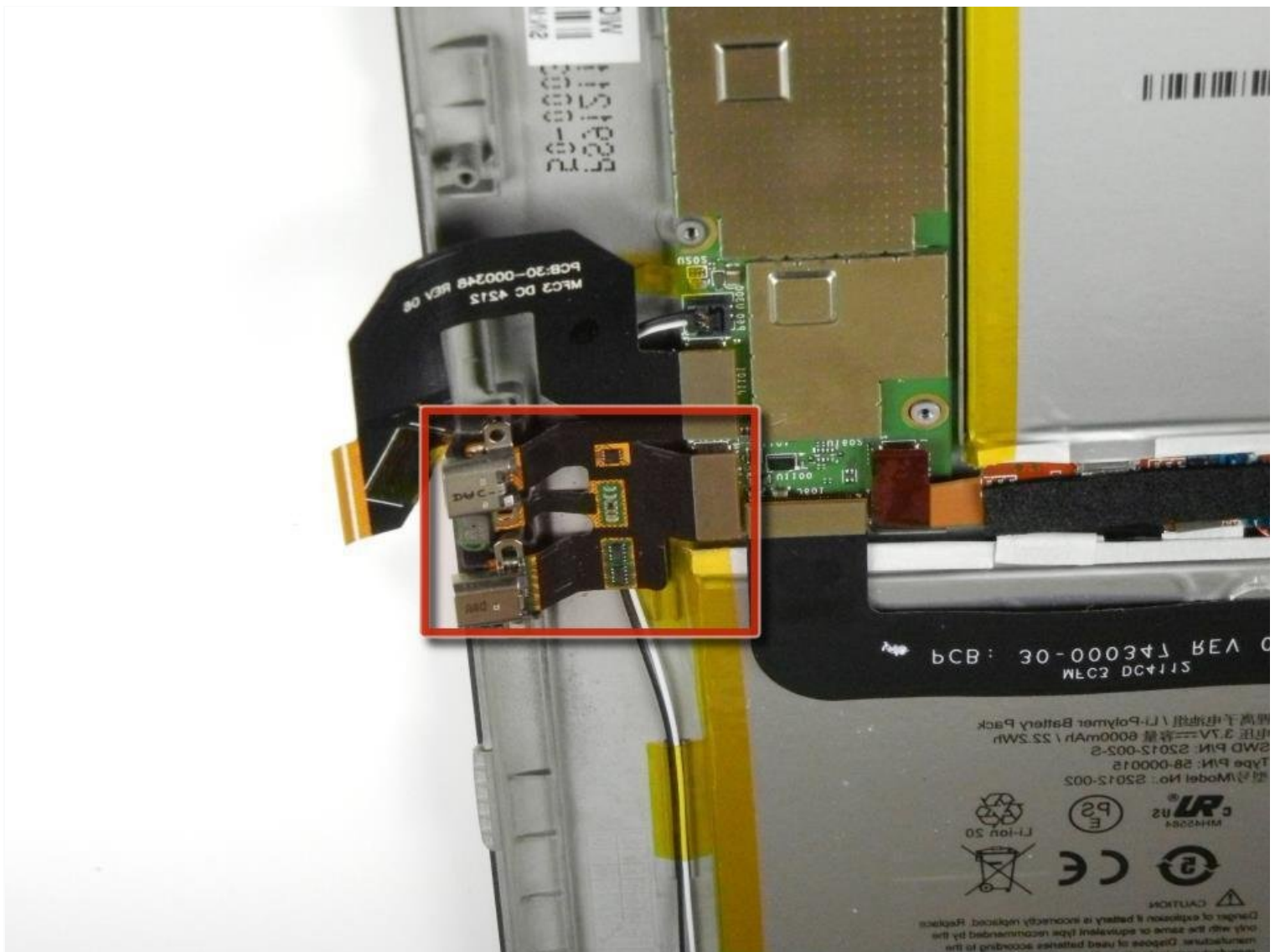




Kindle Fire HD 8.9" Charger & Micro HDMI Input Replacement

Written By: Joel Wilcox





TOOLS:

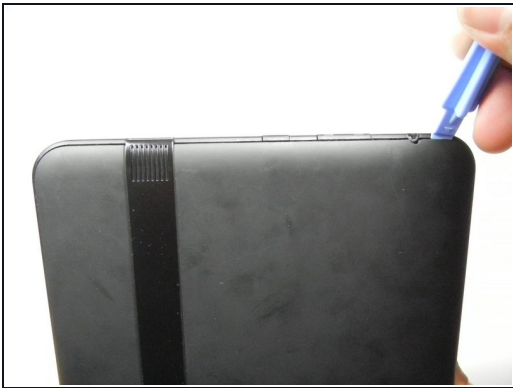
[iFixit Opening Tool](#) (1)



PARTS:

[Kindle Fire HD 8.9" Charging Assembly](#) (1)

Step 1 — Screen



- Insert a large plastic opening tool next to the Kindle's headphone jack.
 - ⓘ Make sure the notch on the plastic opening tool is facing the back of the Kindle.
- Move the plastic opening tool evenly around the Kindle, separating the two halves.

⚠ Be careful not to completely separate the rear cover. There are two delicate flex cables that connect the display assembly to the motherboard.

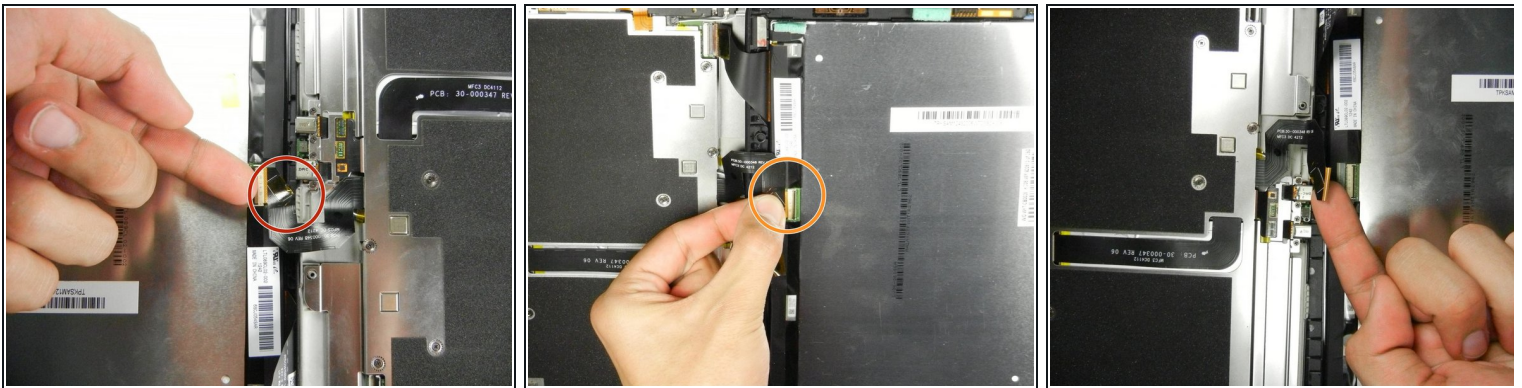
Step 2



- Set the Kindle down on the rear case.
- Holding the display assembly near the camera, carefully open the display assembly up to about 90 degrees from the rear case.

⚠ These images show the Kindle laying flat. In order to prevent damage to the flex cables, keep the Kindle open at 90 degrees while disconnecting the display assembly.

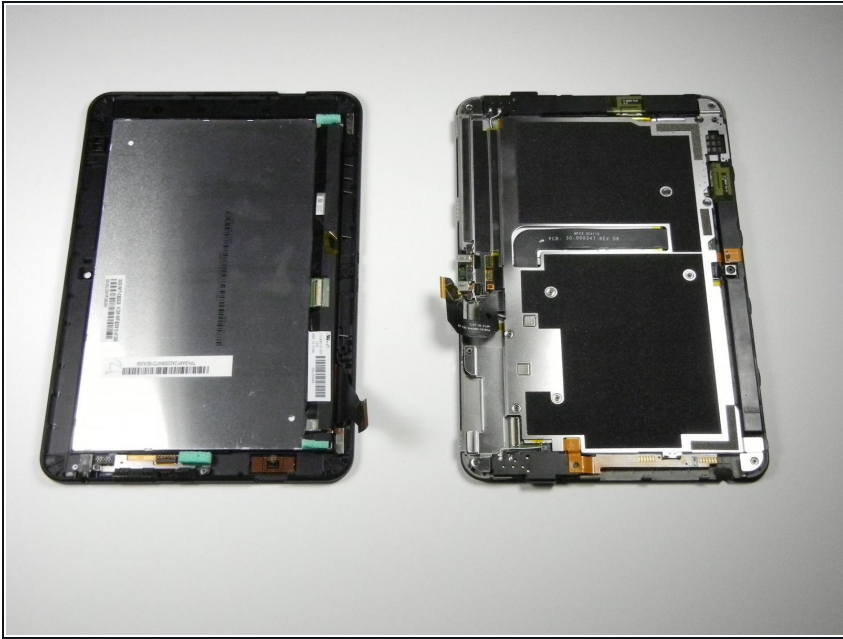
Step 3



- Lift the retaining flap on the ZIF connector of the upper flex cable.
- Gently pull the cable out of its socket.

⚠ This flex cable is delicate. Be careful not to crease or bend it while working.

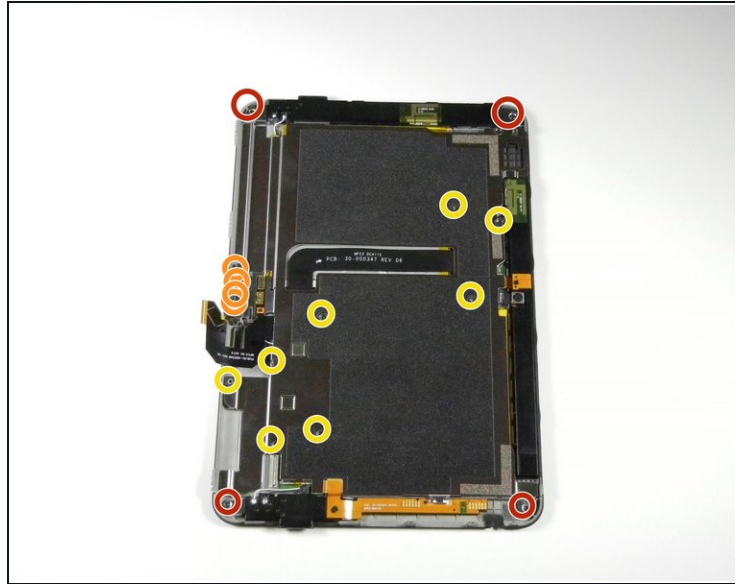
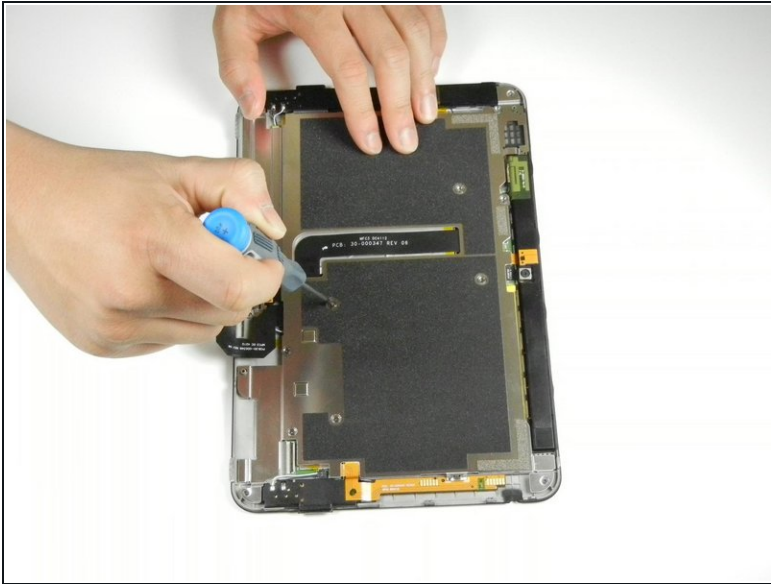
Step 4



- Separate the display assembly from the rest of the device.

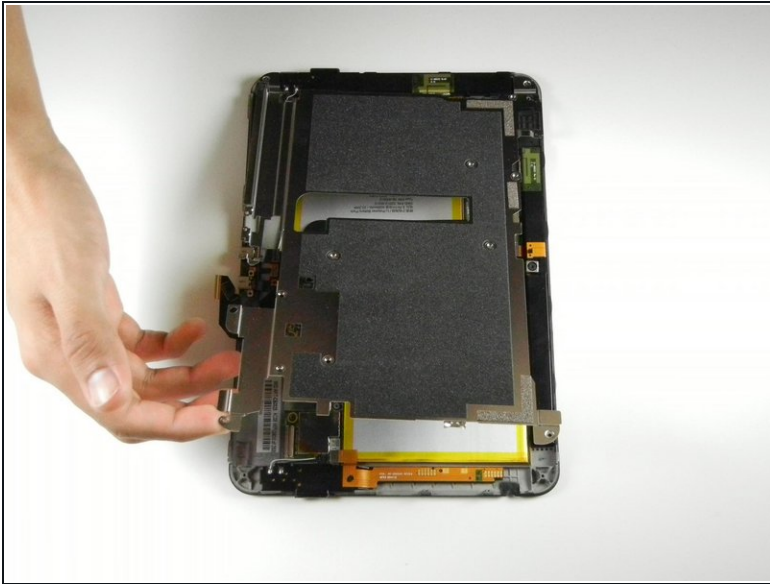
⚠ When reassembling the device, align the two halves of the case before connecting the flex cables.

Step 5 — Inner Metal Casing



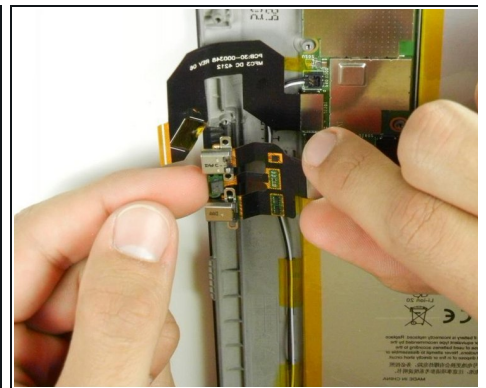
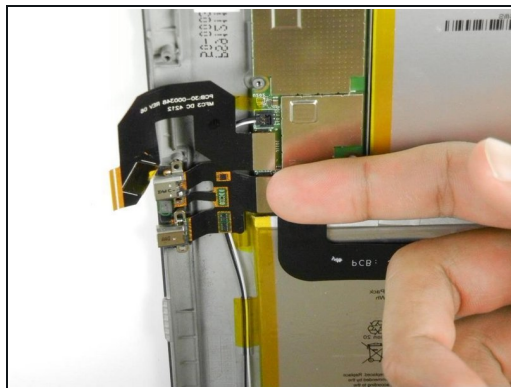
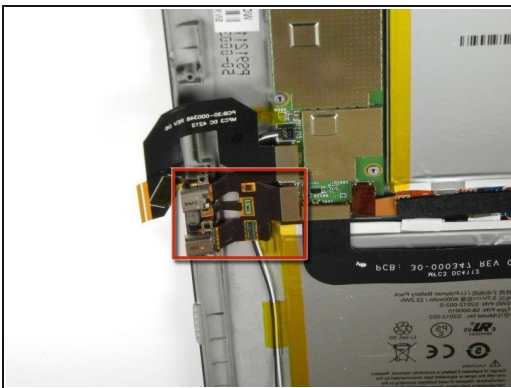
- Remove the following sixteen screws from the metal midframe on the rear of the device:
 - Four 3 mm Phillips screw (located in each corner of the device - noted in red in the diagram)
 - Four 3 mm Phillips screws (surrounding the ports - noted in orange in the diagram)
 - Eight 3 mm Phillips screws (located around the body of the midframe - noted in yellow in the diagram)

Step 6



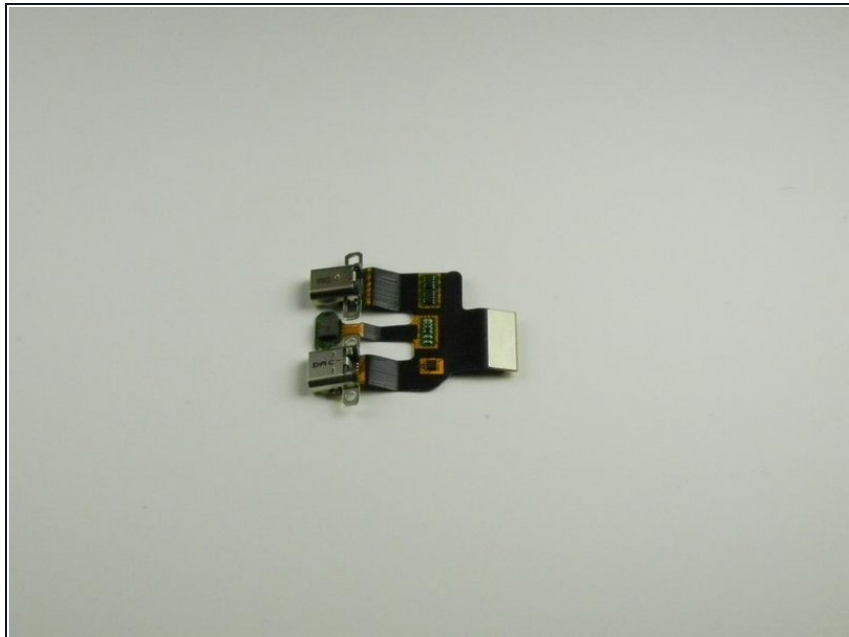
- Carefully remove the metal midframe.


Step 7 — Charger & Micro HDMI Input



- Locate the charger and micro HDMI input located on the back side of your Kindle.
- Use your finger to gently apply pressure and push upward on the metal strip that faces the center of the Kindle.
- ⚠ Be careful to not bend the black portion that connects the two inputs when removing the metal strip.
- Lift the metal strip on both sides by using your fingers.

Step 8



 You have now successfully removed the charger and micro HDMI input.

To reassemble your device, follow these instructions in reverse order.