



Acer Aspire ES1-512-C80E Hard Drive Replacement

How to replace the hard drive in an Acer Aspire ES1-512-C80E laptop.

Written By: Robert Creighton



INTRODUCTION

You may need to replace the hard drive in your Acer Aspire ES1-512-C80E if you experience problems regarding the device's storage. To do this, you will need Phillip's #00/#000 screwdrivers, and a spudger. Additionally, you will need a replacement hard drive. To access the hard drive, the back cover of the device will need to be removed. The process of replacing the battery should take between 15-25 minutes.



TOOLS:

- [Metal Spudger](#) (1)
- [Phillips #00 Screwdriver](#) (1)
- [Phillips #000 Screwdriver](#) (1)
- [iFixit Opening Tool](#) (1)



PARTS:

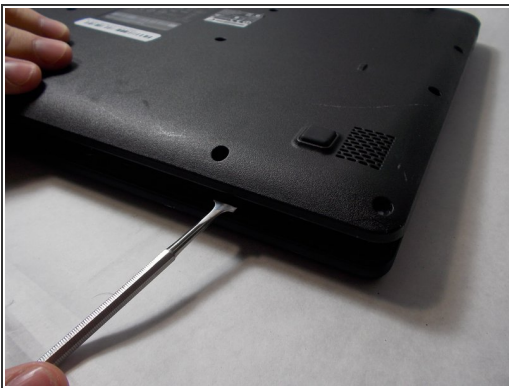
- [1 TB SSD / Upgrade Bundle](#) (1)

Step 1 — Back Cover



- Place the device upside down on a flat surface.
- Using a Phillips #00 screwdriver, remove all nineteen 1.2mm screws that secure the bottom cover of the device.

Step 2



- Pry around the edges with a spudger to remove the back cover.
- i** The two hinges on the back require additional force to be popped open.

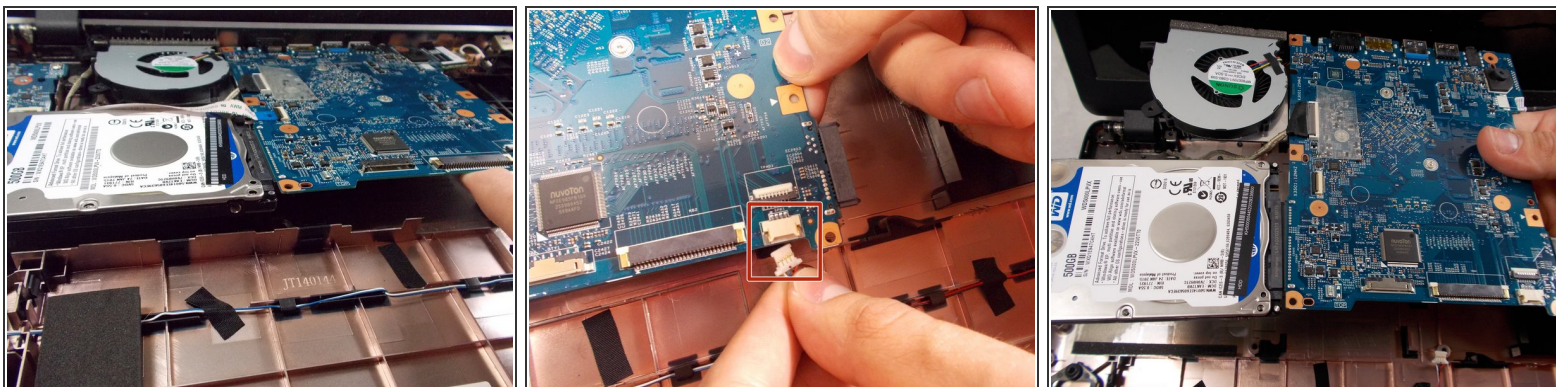
Step 3 — Removing Hard Drive screws



- Using a Phillips #000 screwdriver, remove the five 1.2mm screws that hold the hard drive in place.

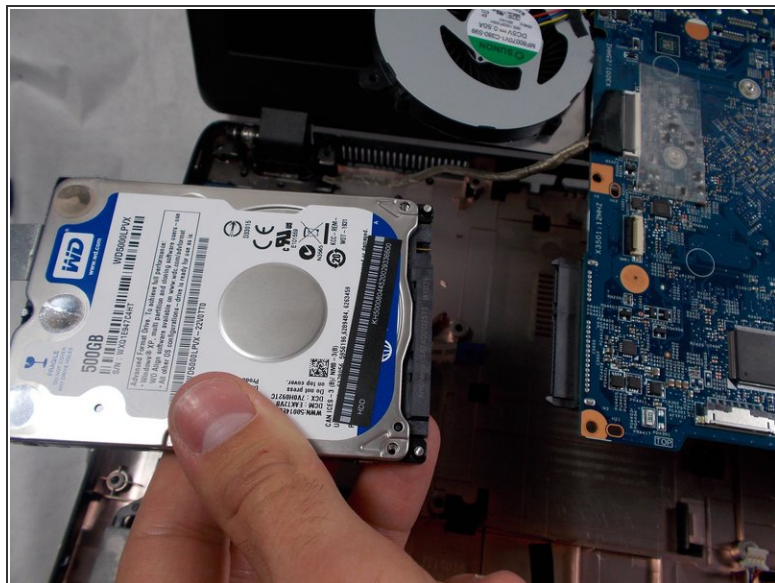
⚠ *Attention***** Only the screw on the opposite end of the port of the hard drive needs to be removed. Then the hard drive will slide away from the Motherboard while still in the plastic case. Once slid out all the way, it lifts out separately with ease.

Step 4



- Lift the hard drive, fan, motherboard, and wireless LAN card out of the device.
- These components are still connected with wires. Remove all plugs that may be attached to other components in order to isolate the group of components.

Step 5 — Removing Drive



- Once the four components are out of the device, the hard drive is ready to be removed.
- To remove the hard drive, unplug it from the motherboard.

⚠ *Attention***** The hard drive does not lift out of the computer **CONNECTED** to the motherboard. It can damage connection of hard drive on motherboard. Once the Screw on the opposite end of the port is removed, the Hard Drive should slide away from the Motherboard and lift out with ease.

To reassemble your device, follow these instructions in reverse order.