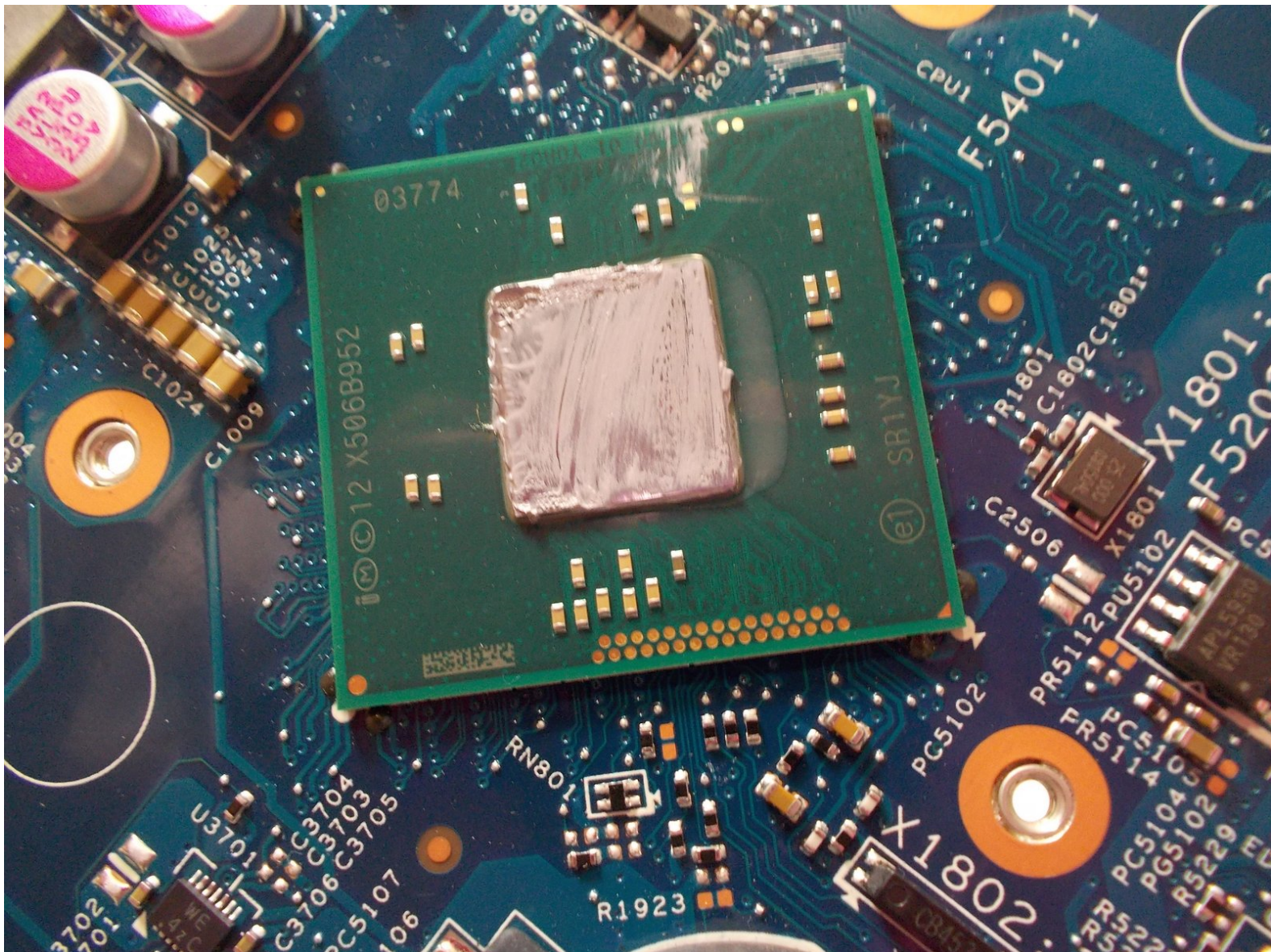




Acer Aspire ES1-512-C80E Motherboard Replacement

You may need to replace the motherboard on your...

Written By: Robert Creighton



INTRODUCTION

You may need to replace the motherboard on your device if you experience problems regarding the Acer Aspire ES1-512-C80E's run speed. To do this, you will need Phillip's #00/#000 screwdrivers, and a spudger. Additionally, you will need a replacement motherboard. To access the motherboard, the back cover of the device will need to be removed. The process of replacing the motherboard should take between 15-25 minutes.



TOOLS:

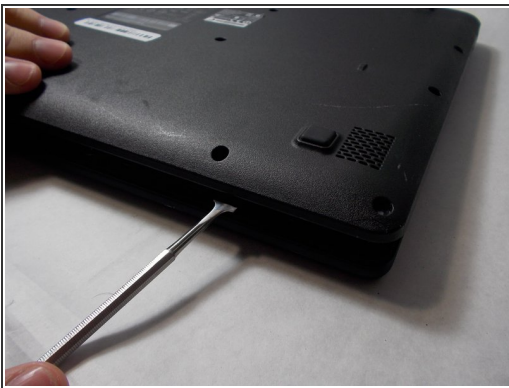
- [Metal Spudger](#) (1)
 - [Phillips #00 Screwdriver](#) (1)
 - [Phillips #000 Screwdriver](#) (1)
 - [iFixit Opening Tool](#) (1)
-

Step 1 — Back Cover



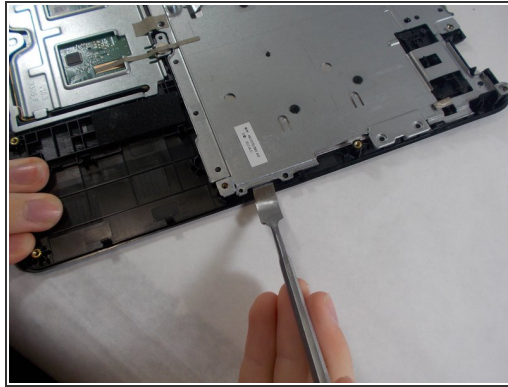
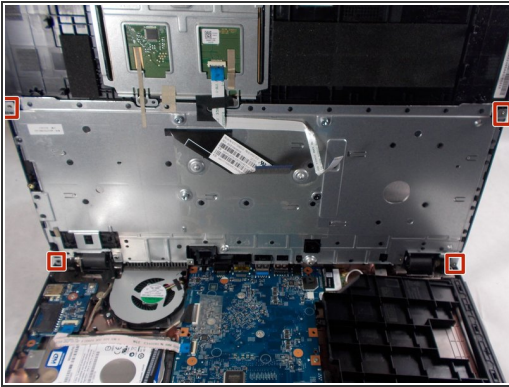
- Place the device upside down on a flat surface.
- Using a Phillips #00 screwdriver, remove all nineteen 1.2mm screws that secure the bottom cover of the device.





Step 2



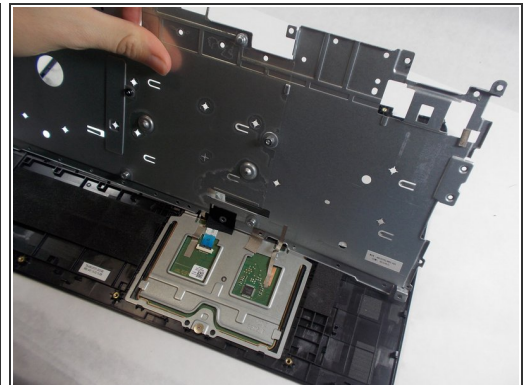
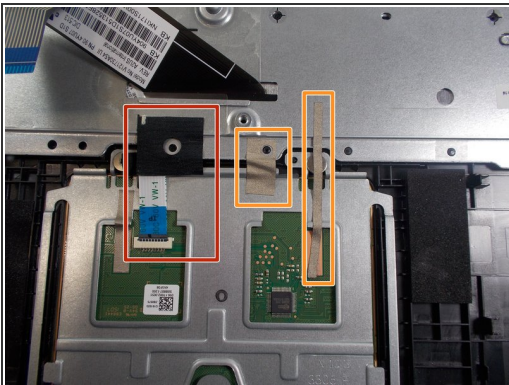
- Pry around the edges with a spudger to remove the back cover.
- i** The two hinges on the back require additional force to be popped open.





Step 3 — Keyboard



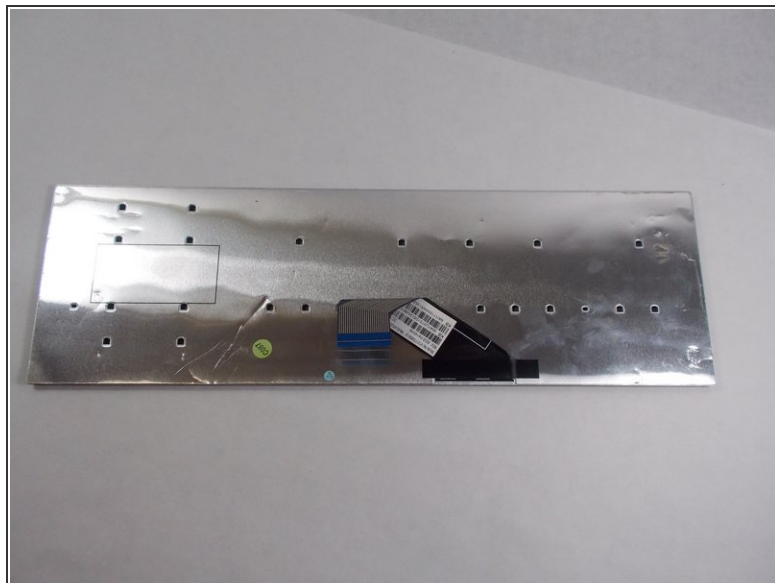
-  The keyboard is the silver piece located by itself on the upper half of the laptop.
-  Using a Phillips #00 screwdriver, remove the four 1.2mm screws from the keyboard.
-  Using a spudger, go around the edges and pry off the keyboard.
-  All black clips will have to be removed before the keyboard can be removed.

Step 4



-  Remove the ribbon cable connection from the keyboard.
-  Peel back the two pieces of tape to separate the keyboard.
-  Remove the keyboard from under the plastic covering.
-  Remove the silver plate back cover of the keyboard from the bottom base.

Step 5



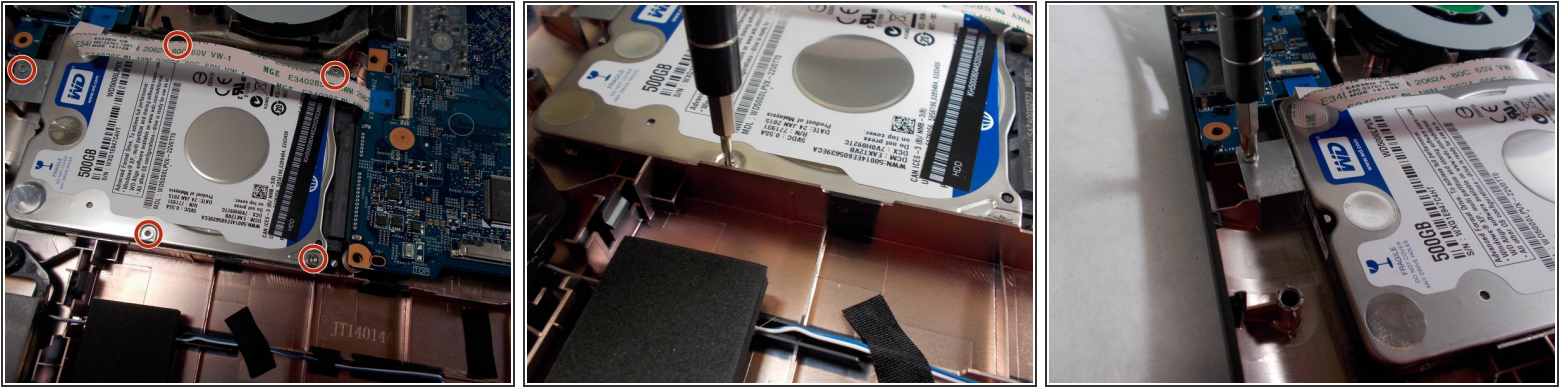
- Remove the large silver plate from the keyboard.
- ❗ You can not remove the silver backing with the attached wire from the back of the keyboard.

Step 6



- The keyboard is removed and ready to be replaced.

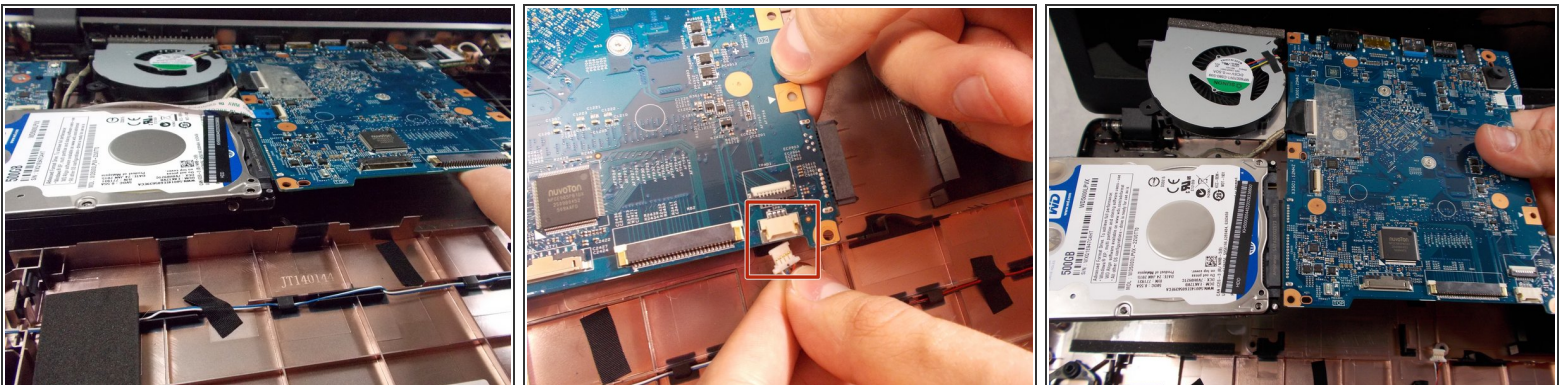
Step 7 — Removing Hard Drive screws



- Using a Phillips #000 screwdriver, remove the five 1.2mm screws that hold the hard drive in place.

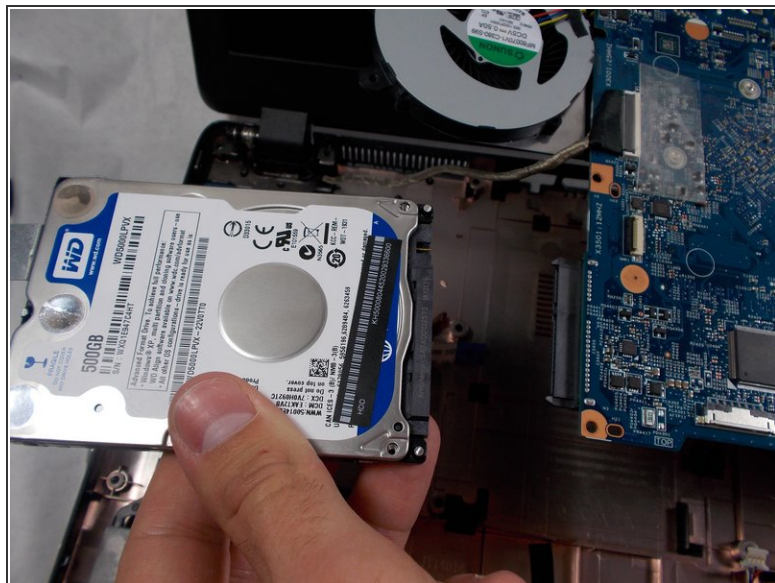
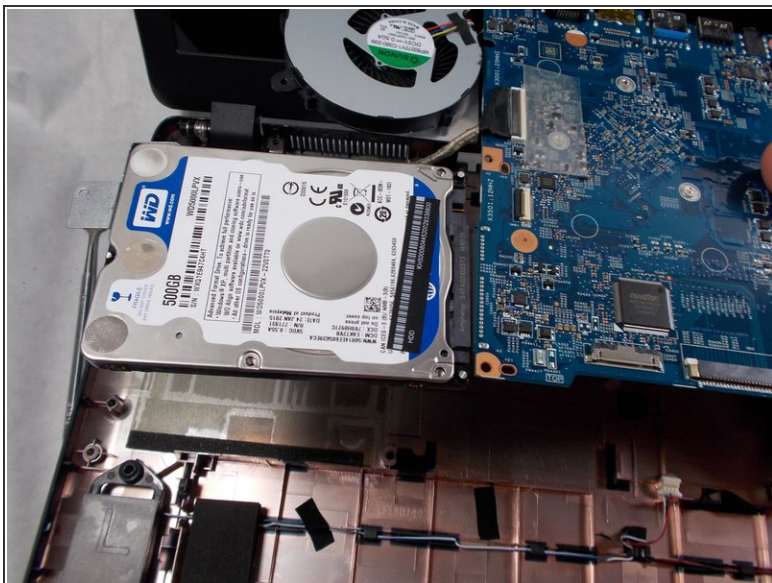
⚠ Attention Only the screw on the opposite end of the port of the hard drive needs to be removed. Then the hard drive will slide away from the Motherboard while still in the plastic case. Once slid out all the way, it lifts out separately with ease.

Step 8



- Lift the hard drive, fan, motherboard, and wireless LAN card out of the device.
- These components are still connected with wires. Remove all plugs that may be attached to other components in order to isolate the group of components.

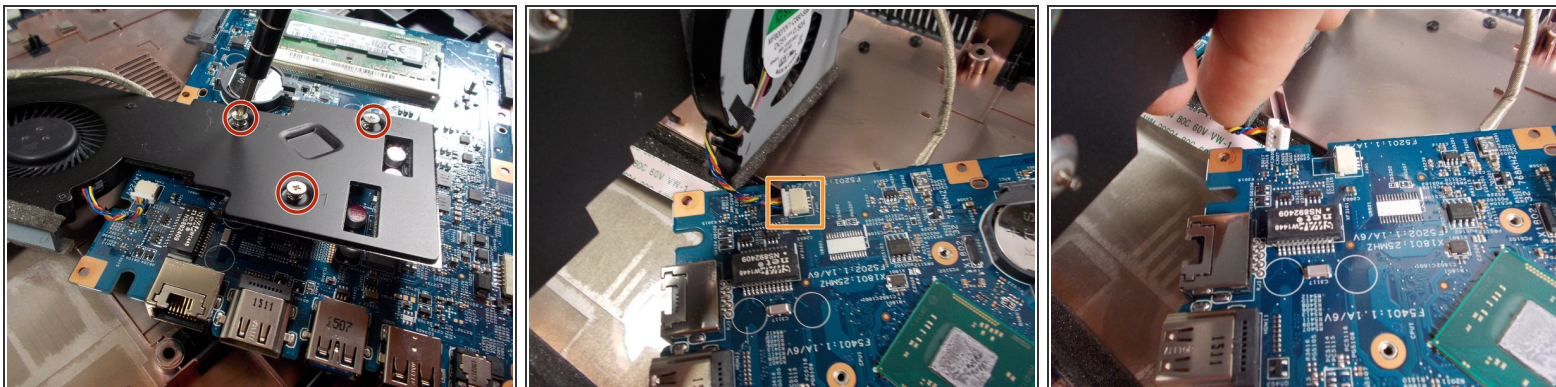
Step 9 — Removing Drive



- Once the four components are out of the device, the hard drive is ready to be removed.
- To remove the hard drive, unplug it from the motherboard.

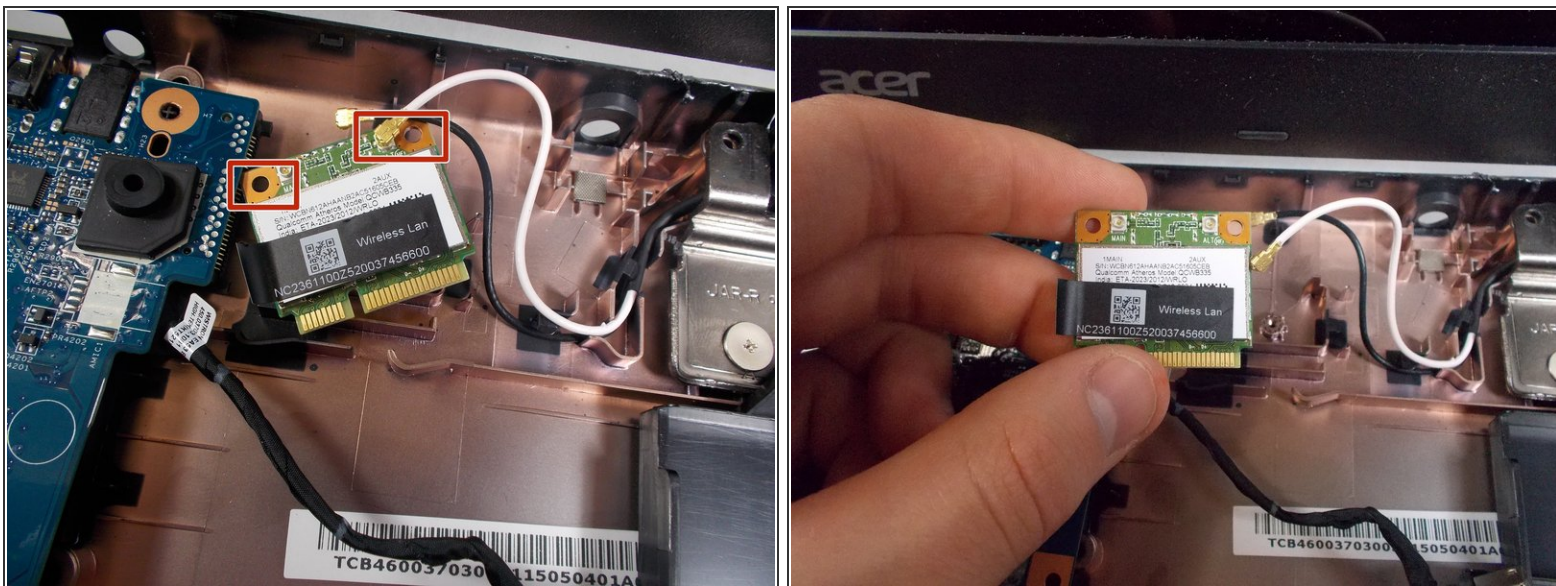
⚠ Attention The hard drive does not lift out of the computer **CONNECTED** to the motherboard. It can damage connection of hard drive on motherboard. Once the Screw on the opposite end of the port is removed, the Hard Drive should slide away from the Motherboard and lift out with ease.

Step 10 — Motherboard



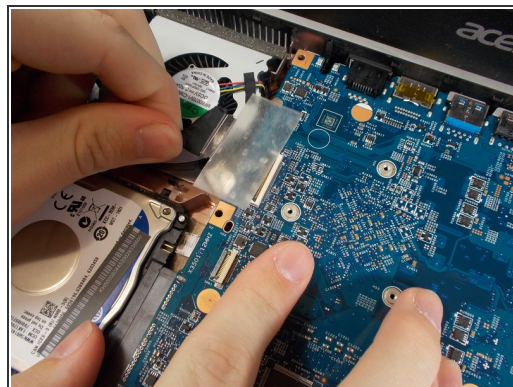
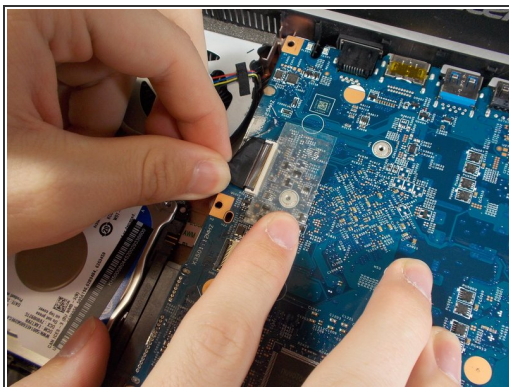
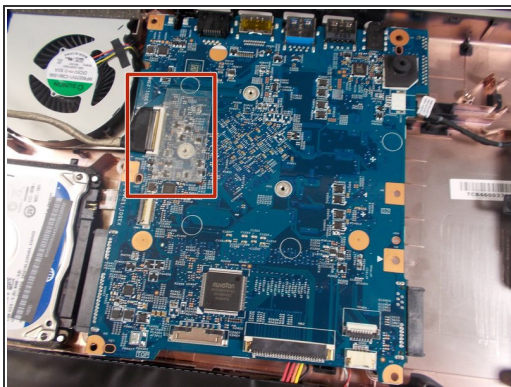
- Flip over the motherboard.
- Remove all three 1.2mm screws that attach the fan to the motherboard using a Phillips #00 screwdriver.
- Lift the fan off of the motherboard.
- The fan and the motherboard are still connected with wires. Remove any plugs that may be attaching the components.

Step 11



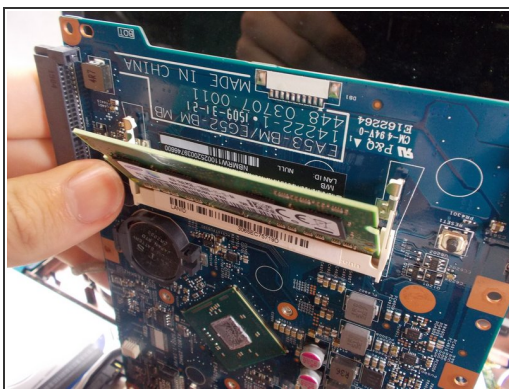
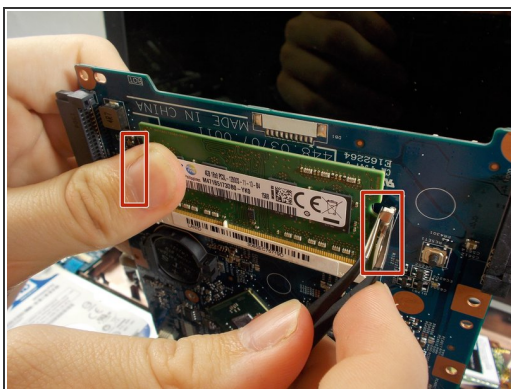
- Remove the wireless LAN card from the motherboard by unplugging the connecting wires.

Step 12



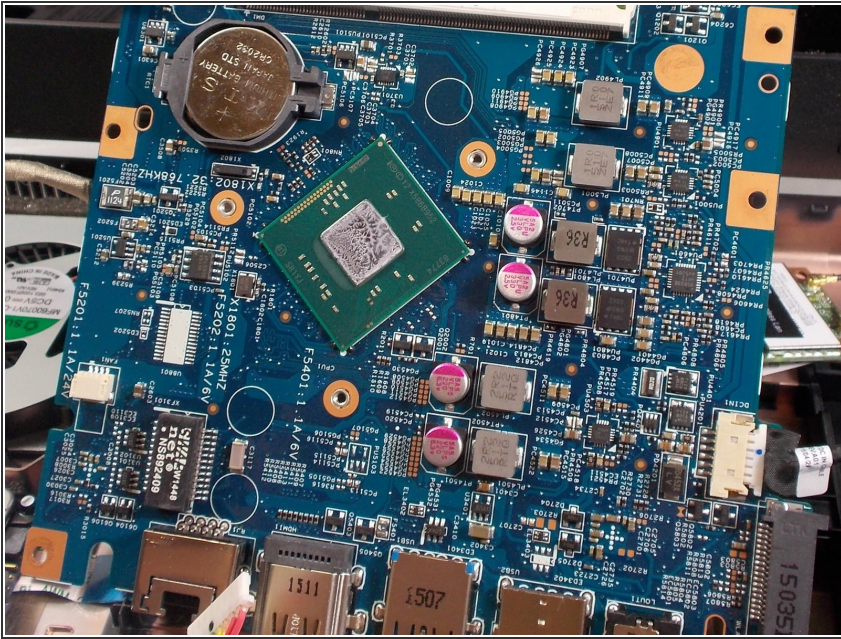
- Gently remove the tape and plug from the motherboard.

Step 13



- To remove the RAM, push both of the clips outward and the RAM chip will easily slide up and out.

Step 14



- Remove the motherboard from the laptop.

To reassemble your device, follow these instructions in reverse order.