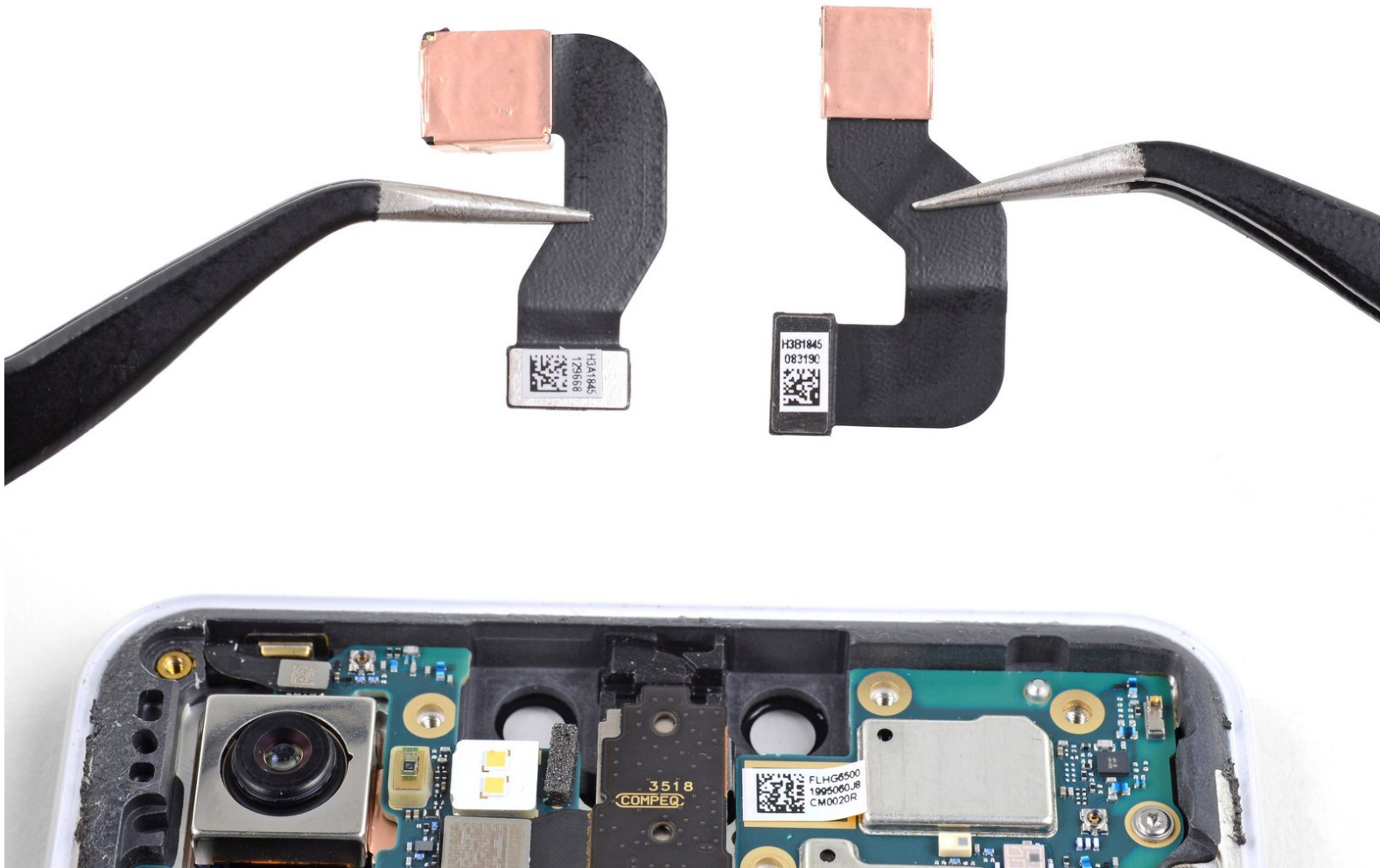




# Google Pixel 3 XL Front Camera Removal

Prerequisite guide only! Removes the front-facing cameras.

Written By: Arthur Shi



# INTRODUCTION

This is a prerequisite guide! This guide is part of an another procedure and is not meant to be used alone.

This guide shows how to remove and replace either or both front-facing selfie cameras for your Pixel 3 XL. Compared to the published front-facing camera guide, this prereq does not have the determination step.



## TOOLS:

- [iOpener](#) (1)
  - [Suction Handle](#) (1)
  - [iFixit Opening Picks \(Set of 6\)](#) (1)
  - [T3 Torx Screwdriver](#) (1)
  - [Tweezers](#) (1)
  - [Spudger](#) (1)
-

## Step 1 — Remove the motherboard shield screws



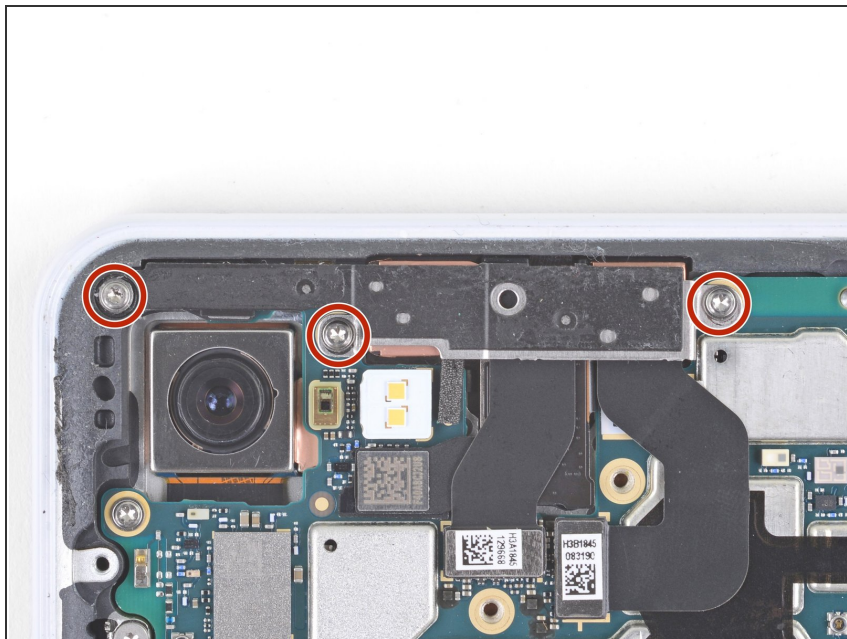
- Remove the five T3 screws securing the motherboard shield:
  - Three 4 mm long screws
  - Two 3 mm long screws

## Step 2 — Remove the motherboard shield



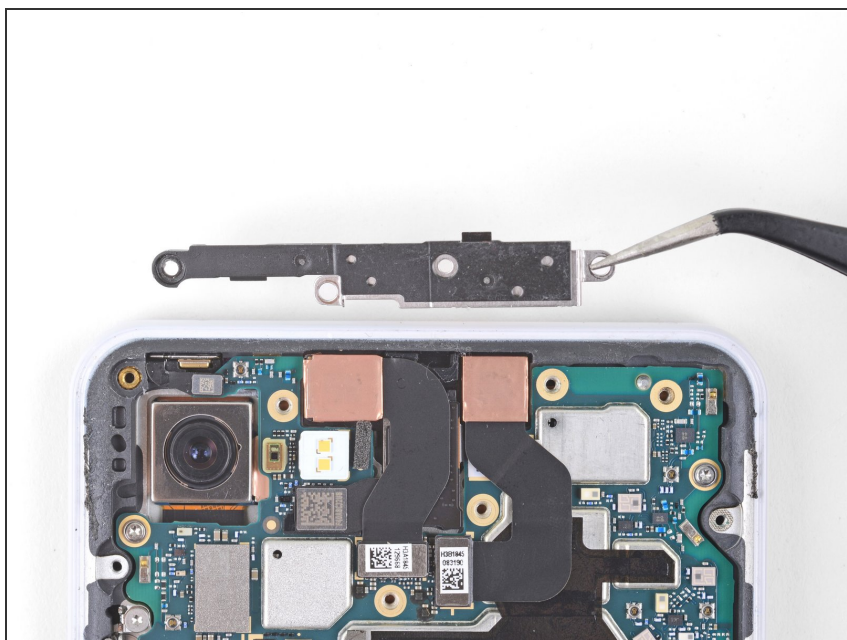
- Remove the motherboard shield.

### Step 3 — Remove the front camera bracket



- Remove the three 3 mm long T3 screws securing the front camera bracket.

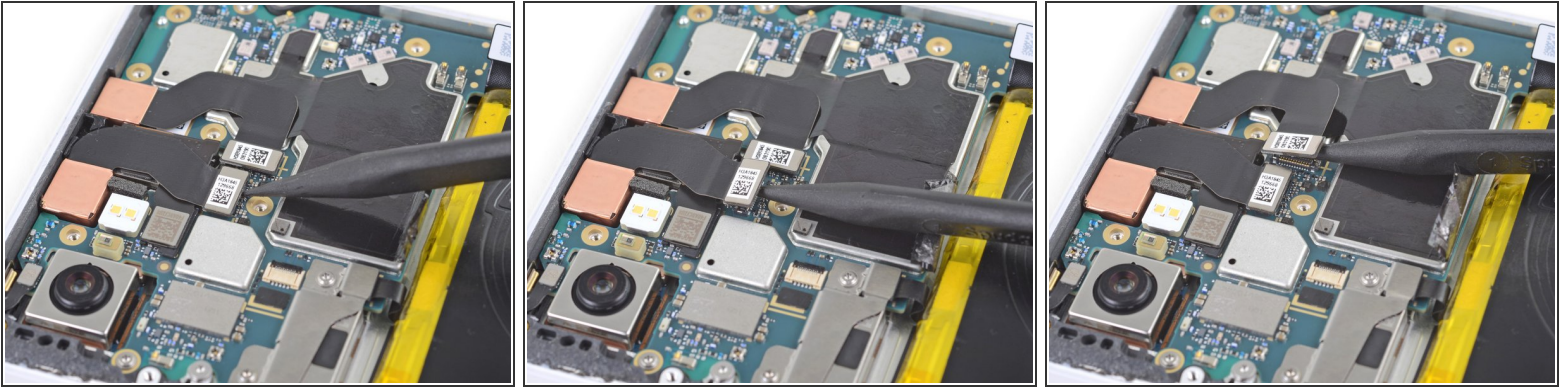
### Step 4 — Remove the front camera bracket



- Remove the front camera bracket.



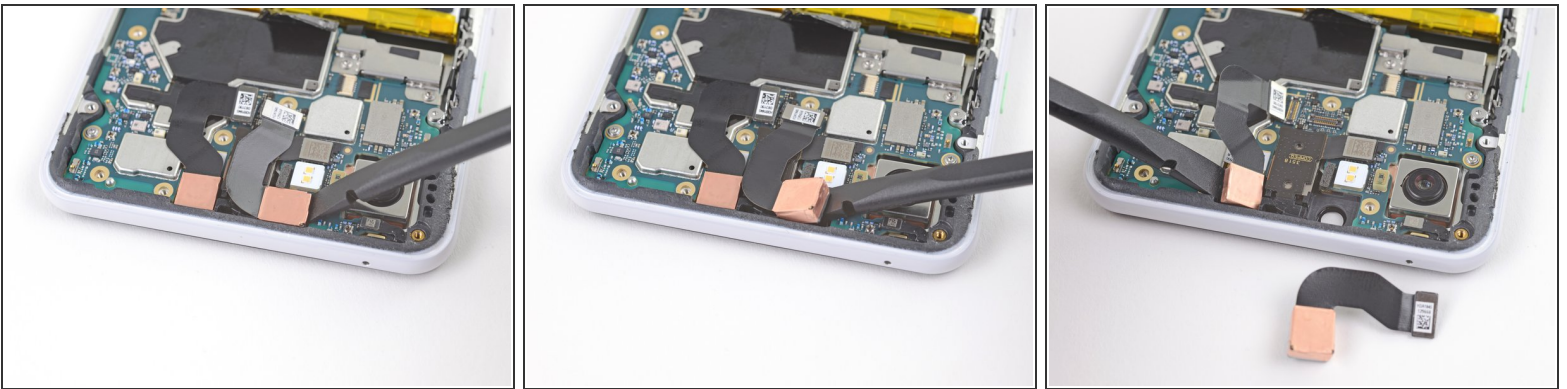
## Step 5 — Disconnect the front cameras



- Use the point of a spudger to carefully pry up and disconnect the cameras from their motherboard sockets.

⚠ Be very careful not to dislodge the small surface-mounted components surrounding the sockets.

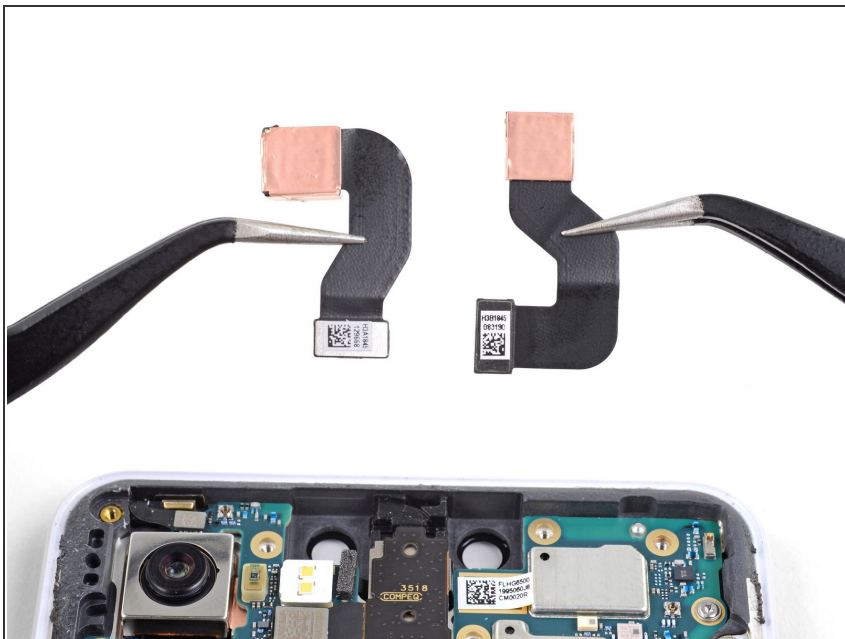
## Step 6 — Loosen the front cameras



ⓘ The cameras are lightly adhered in place.

- Use the flat end of a spudger to pry up and loosen the camera modules from their recess.

## Step 7 — Remove the front-facing cameras



- Remove the front-facing cameras.

To reassemble your device, follow these instructions in reverse order.

Repair didn't go as planned? Try some [basic troubleshooting](#), or ask our [Answers community](#) for help.