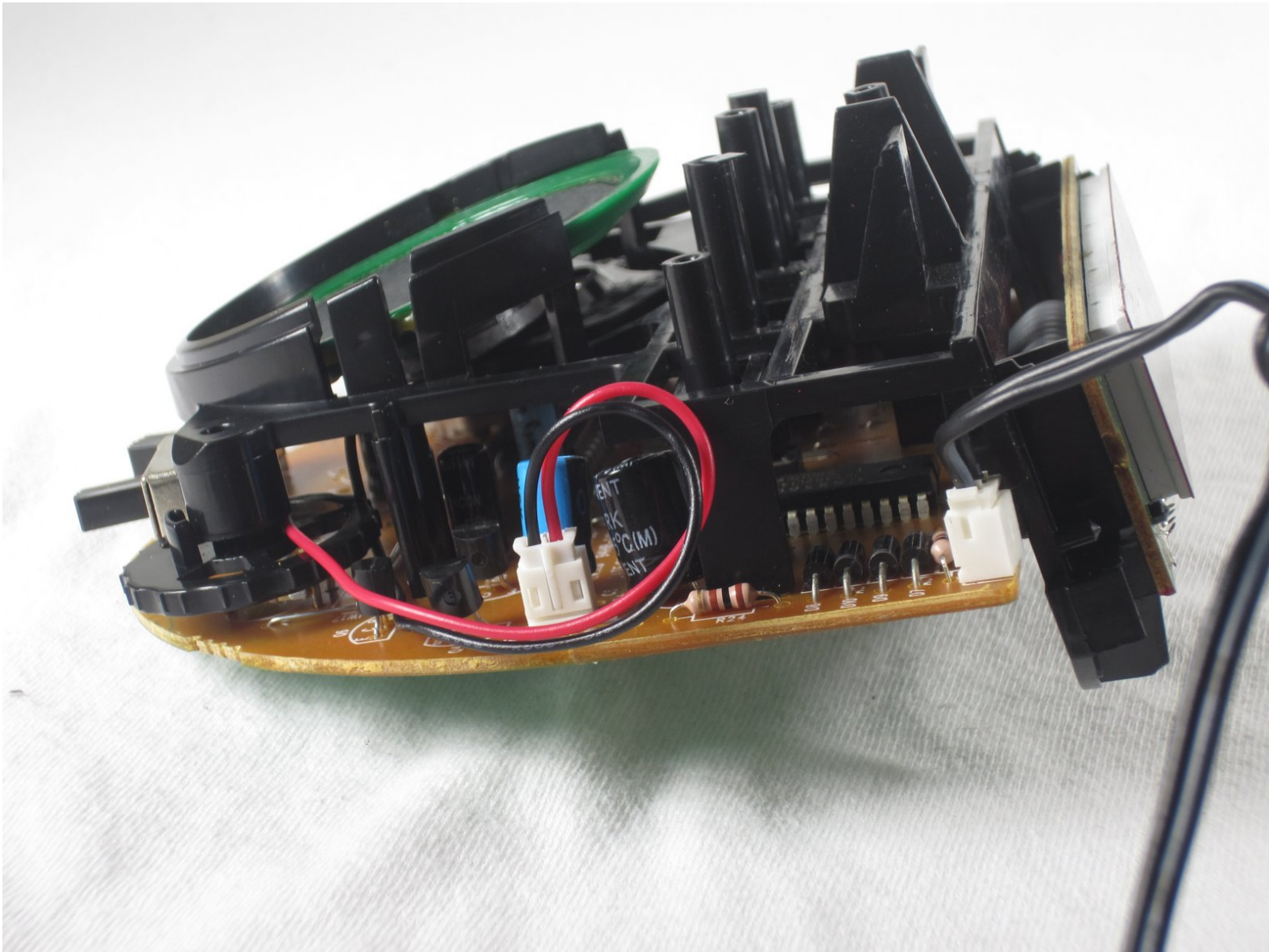




Venturer CR20 Power Cord Replacement

Replace your power cord to bring back life to your alarm clock.

Written By: Robert Myers



INTRODUCTION

In this guide, you will learn how to remove and install the power cord of your alarm clock. The process consists of removing the front screen, followed by taking the hardware out of the housing and detaching the power cord.



TOOLS:

- [Phillips #0 Screwdriver](#) (1)
-

Step 1 — Front Screen



- On the bottom of the clock locate and unscrew the single 2mm Phillips screw from bottom of the clock.

Step 2



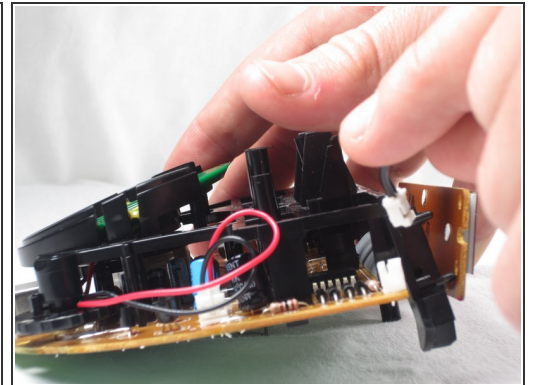
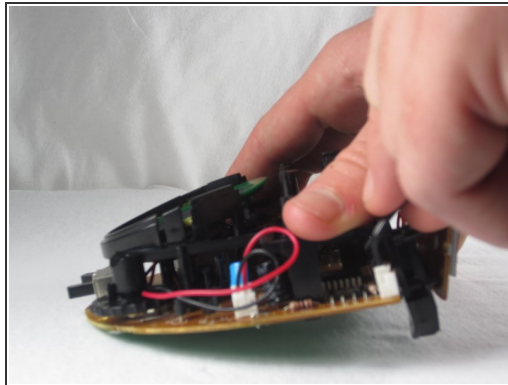
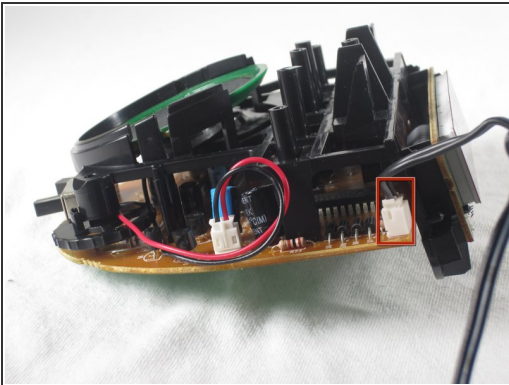
- Using a moderate amount of force, position the screwdriver in the crack between the front screen and the main body of the clock (as shown) and push the screen away from the main body of the clock.

Step 3 — Power Cord



- Get a firm grip on the outside of the clock and a firm grip on the hardware on the inside of the the clock like so and pull the hardware out from the outside of the clock.

Step 4



- Using your fingers, pull the power cord connector, outlined in the picture with a red rectangle straight up to disconnect from the alarm clock.

To reassemble your device, follow these instructions in reverse order.