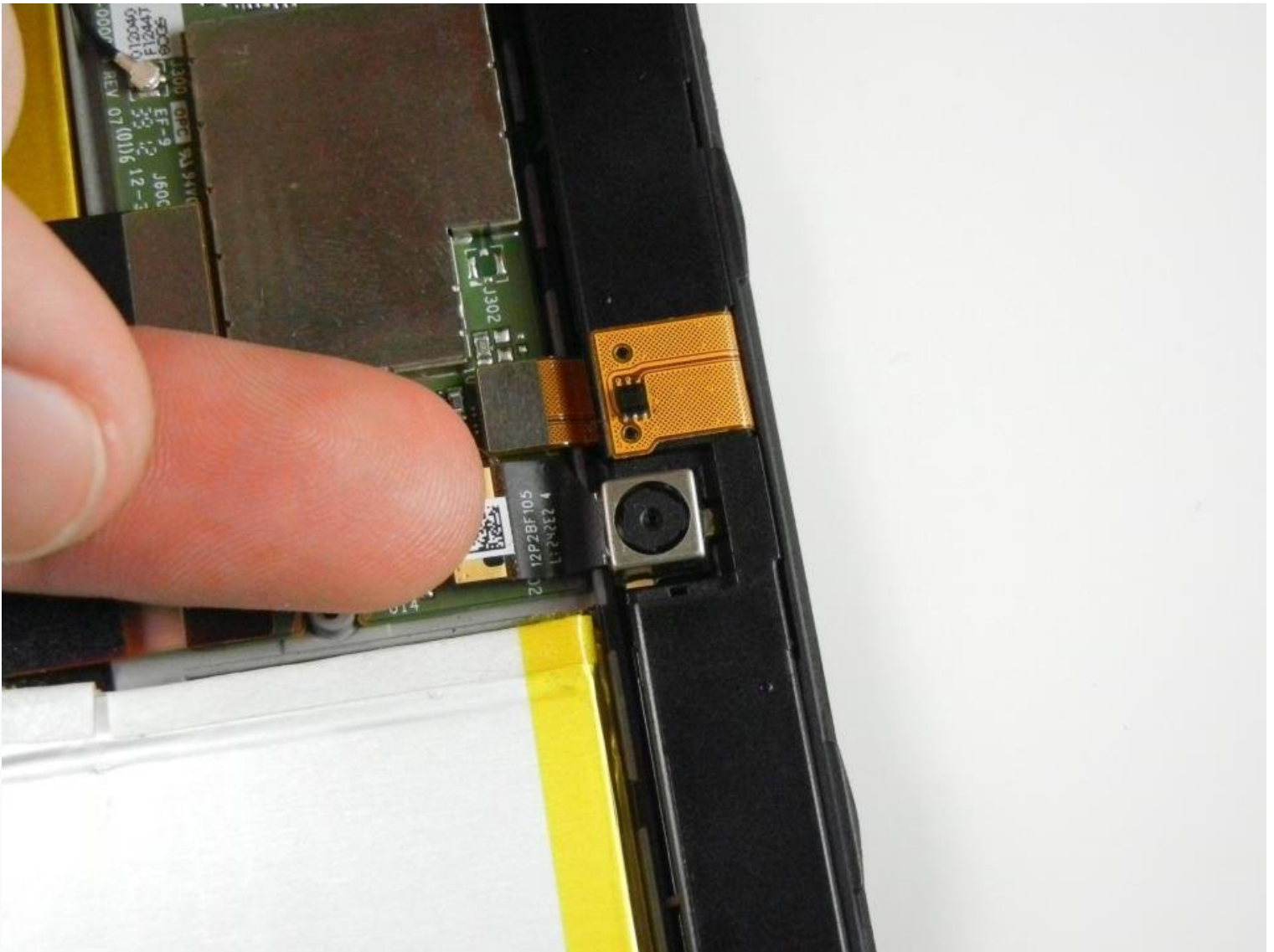




Kindle Fire HD 8.9" Camera Replacement

The Kindle Fire HD 8.9" device comes equipped...

Written By: Ted Park



INTRODUCTION

The Kindle Fire HD 8.9" device comes equipped with 2 cameras. There is a rear-facing camera that is 2 megapixels (MPs) on base models and a front facing camera that is 2 MPs. (Some units have an upgraded rear-facing camera that is 5 MPs).

Occasionally, due to age or rough handling, these cameras may need to be replaced or upgraded. The guide below will walk you through the steps involved to open, locate, and remove the existing camera for replacement.



TOOLS:

[Phillips #00 Screwdriver](#) (1)
[Phillips #000 Screwdriver](#) (1)
[iFixit Opening Tool](#) (1)



PARTS:

[Kindle Fire HD 8.9" \(Wi-Fi\) Screen](#) (1)
[Kindle Fire HD 8.9" Wi-Fi LCD Cable](#) (1)
[Kindle Fire HD 8.9" Wi-Fi Heat Shield](#) (1)
[Kindle Fire HD 8.9" Volume Button Flex Cable](#) (1)
[Kindle Fire HD 8.9" Wi-Fi Front Facing Camera](#) (1)
[Kindle Fire HD 8.9" Camera Bezel Assembly](#) (1)
[Kindle Fire HD 8.9" Camera Daughterboard](#) (1)

Step 1 — Screen



- Insert a large plastic opening tool next to the Kindle's headphone jack.
 - ❗ Make sure the notch on the plastic opening tool is facing the back of the Kindle.
- Move the plastic opening tool evenly around the Kindle, separating the two halves.

⚠ Be careful not to completely separate the rear cover. There are two delicate flex cables that connect the display assembly to the motherboard.

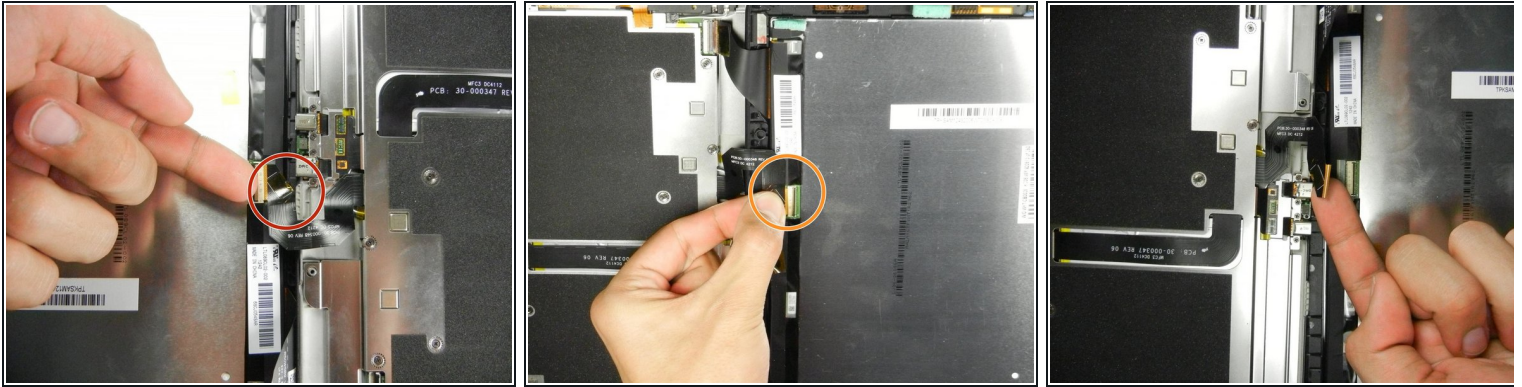
Step 2



- Set the Kindle down on the rear case.
- Holding the display assembly near the camera, carefully open the display assembly up to about 90 degrees from the rear case.

⚠ These images show the Kindle laying flat. In order to prevent damage to the flex cables, keep the Kindle open at 90 degrees while disconnecting the display assembly.

Step 3



- Lift the retaining flap on the ZIF connector of the upper flex cable.
- Gently pull the cable out of its socket.

⚠ This flex cable is delicate. Be careful not to crease or bend it while working.

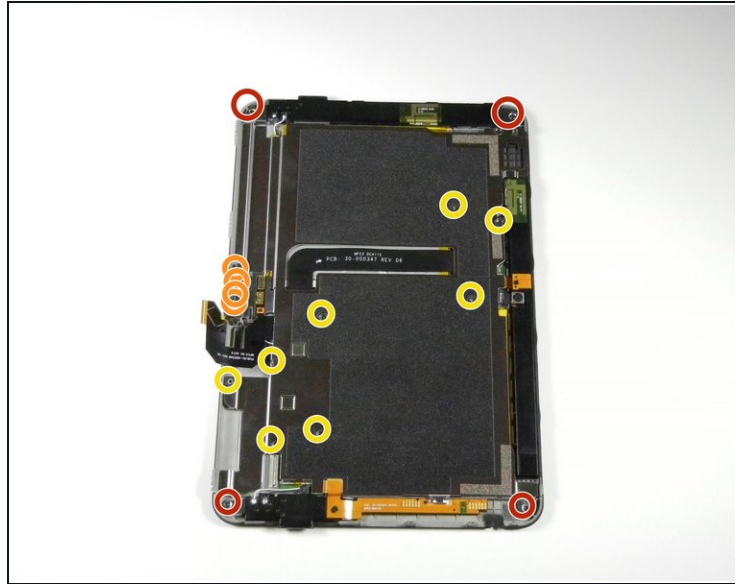
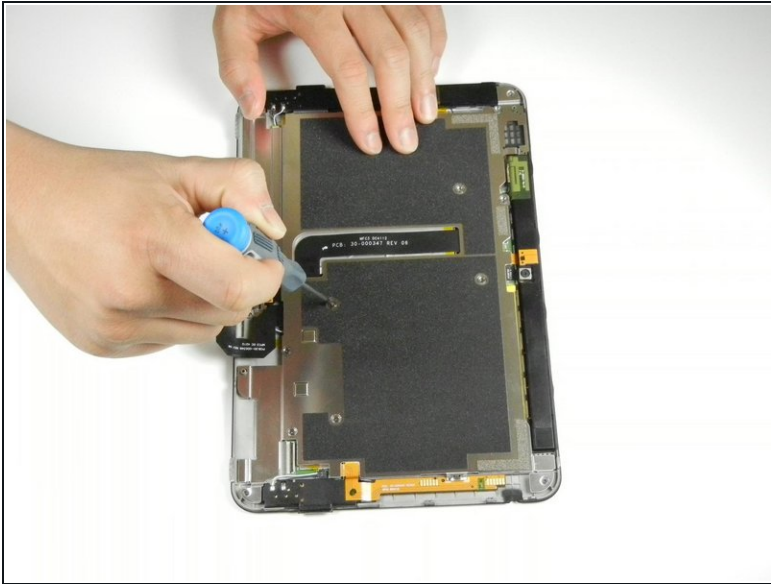
Step 4



- Separate the display assembly from the rest of the device.

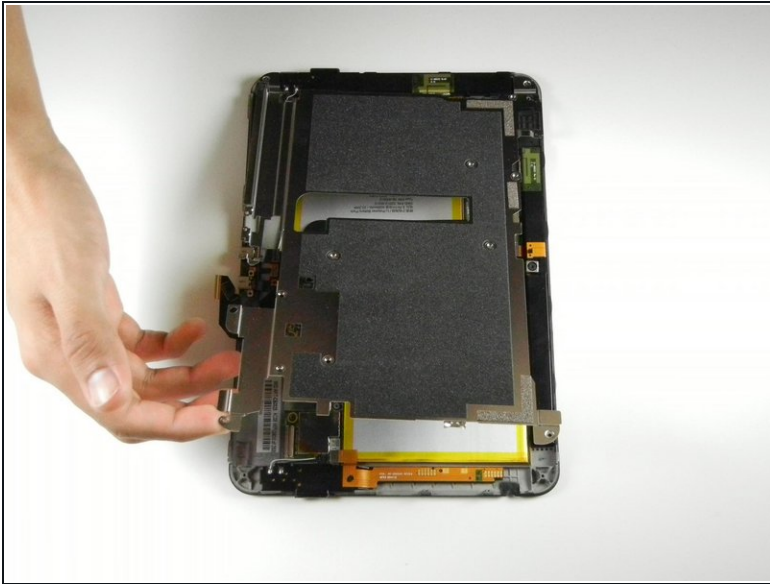
⚠ When reassembling the device, align the two halves of the case before connecting the flex cables.

Step 5 — Inner Metal Casing



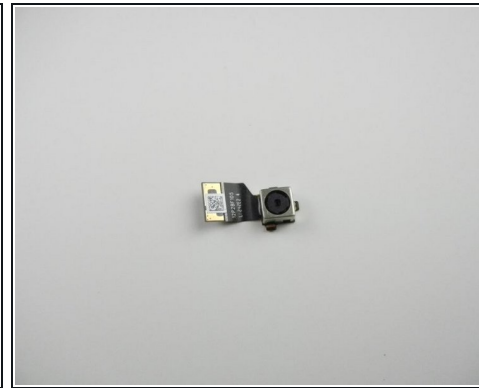
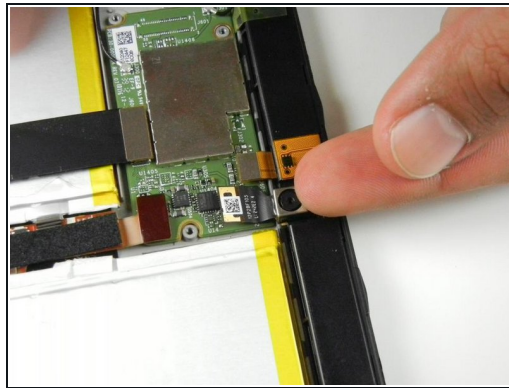
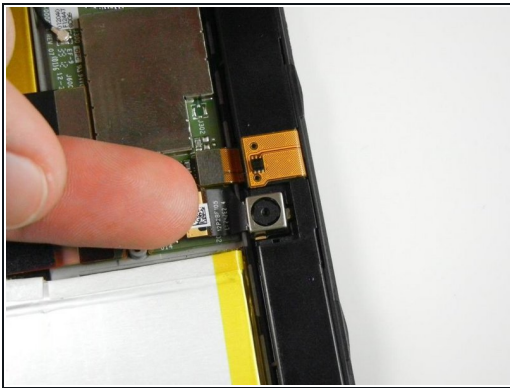
- Remove the following sixteen screws from the metal midframe on the rear of the device:
 - Four 3 mm Phillips screw (located in each corner of the device - noted in red in the diagram)
 - Four 3 mm Phillips screws (surrounding the ports - noted in orange in the diagram)
 - Eight 3 mm Phillips screws (located around the body of the midframe - noted in yellow in the diagram)

Step 6



- Carefully remove the metal midframe.

Step 7 — Camera



- After taking off the metal casing, locate the camera.
- Use your index finger to carefully lift up the silver clip located just under the camera. It will click when it comes loose.
- After you snap up the silver clip, move your finger to the opposite side so that you are now pointing into the Kindle.
- Push the camera outwards towards the edge of the device in order to remove it.

⚠ Make sure to keep the parts in a safe area to avoid any damage to the camera and its lens.

To reassemble your device, follow these instructions in reverse order.