



OnePlus 6T Front Camera Replacement

Use this guide to replace a broken or cracked...

Written By: Kristen Gismondi



INTRODUCTION

Use this guide to replace a broken or cracked OnePlus 6T Front Camera.

TOOLS:

[iOpener](#) (1)

[Plastic Cards](#) (1)

[Tweezers](#) (1)

[Jimmy](#) (1)

[Hairdryer or Heat tool](#) (1)

[Phillips #00 Screwdriver](#) (1)

[Spudger](#) (1)

Step 1 — Back Cover



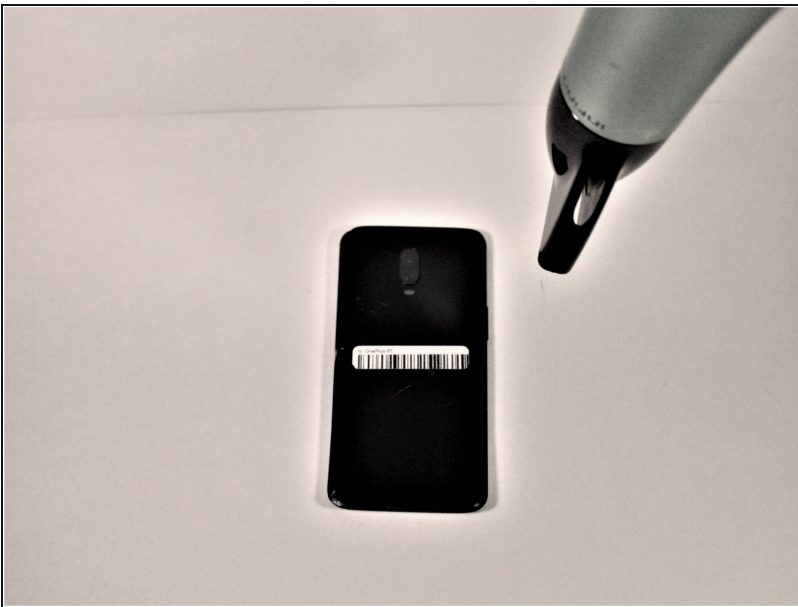
- Make sure the phone is powered off and placed with the back cover facing towards you on a stable surface.

Step 2



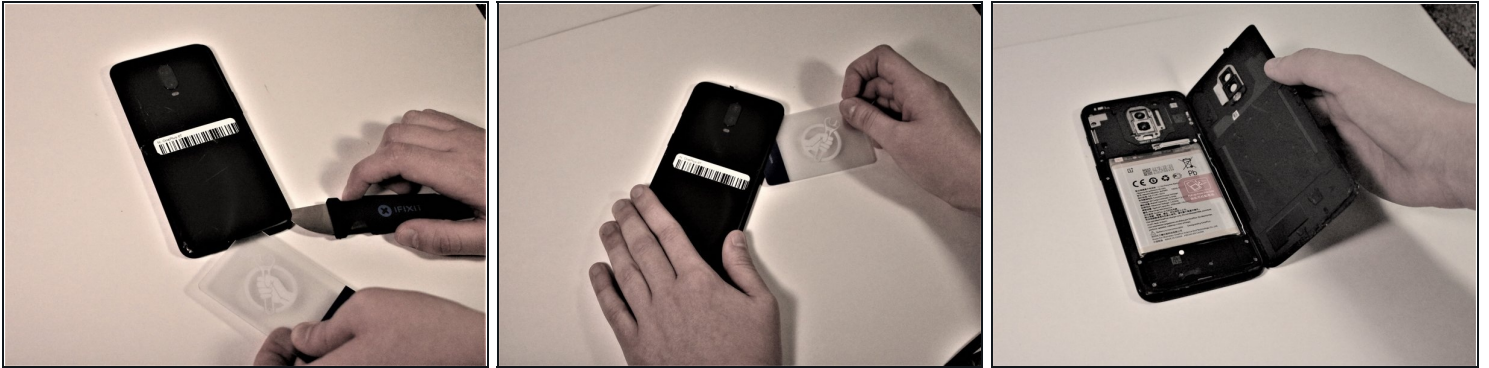
- Pop open the SIM card tray by inserting a SIM card removal tool into a small hole on the upper-left side of the phone.
- Carefully remove the SIM card from its tray.

Step 3



- Loosen the binding glue within the phone using a hairdryer or an [iOpener](#).
- ① If you choose to use a hairdryer, hold the dryer at least eight inches from the phone and apply heat for two minutes in a circular motion around the edges of the phone.

Step 4



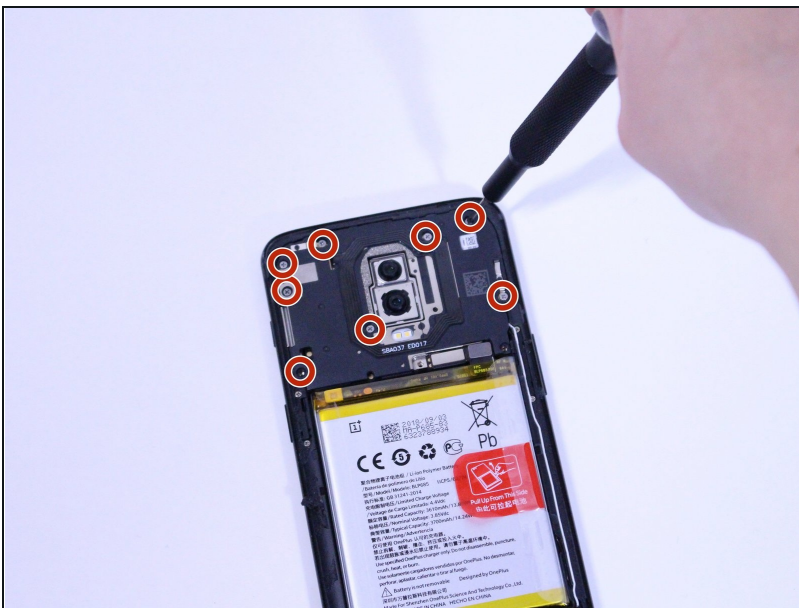
- Insert a Jimmy under one of the heated corners of the phone to lift it slightly.
- Insert a [plastic card](#) underneath the slightly lifted lip on the back cover and gently glide the card under the lifted phone casing.
- ⓘ There will be a small amount of tension, but this is normal as the card is removing the adhesive within the phone.
- Remove the back cover from the phone.
- ★ Use high concentration (>90%) isopropyl alcohol and a lint-free cloth to remove all adhesive residue from the back cover and the frame.

Step 5 — Front Camera



- Remove the single 3mm Phillips #00 screws holding the metal battery cover on the phone.
- Use [tweezers](#) to remove the battery cover and place it to the side.

Step 6



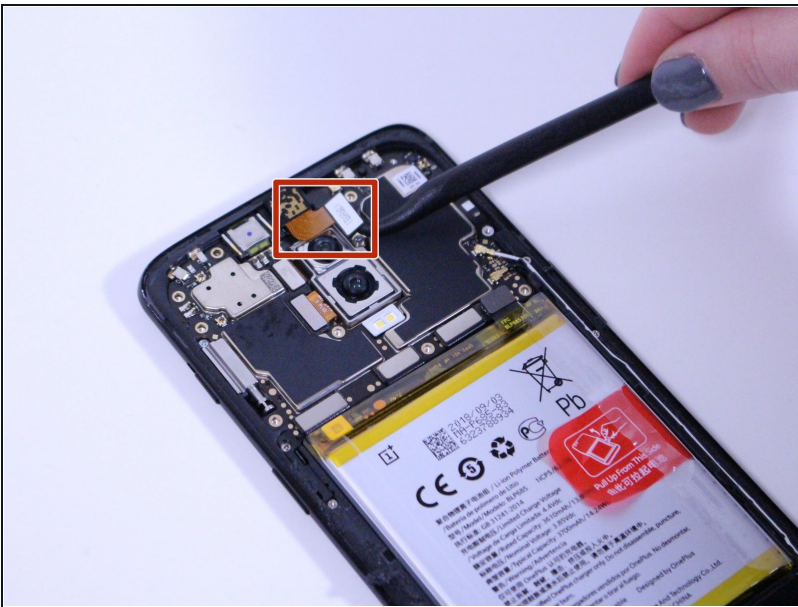
- Remove eight 3mm Phillips #00 screws that connect the midframe to the phone.

Step 7



- Using a spudger, gently remove the midframe and place it to the side.

Step 8



- Using a spudger, lift the light brown tab in the middle of phone to disconnect the front camera.
- Remove the front camera from the phone.

To reassemble your device, follow these instructions in reverse order.