



# HP Chromebook 14-ak041dx Wireless Card Replacement

The HP Chromebook 14-ak041dx wireless card...

Written By: Kristen Gismondi



# INTRODUCTION

The HP Chromebook 14-ak041dx wireless card allows you to connect to the internet without an ethernet cable. If your HP Chromebook fails to connect to any wireless networks, this guide will show you how to replace the wireless card.

Before replacing the wireless card, ensure your laptop is not in Airplane Mode. Leaving the laptop in Airplane Mode makes it unable to connect to any wireless network.

Make sure the laptop is entirely powered off and unplugged before disassembling it.

---

## TOOLS:

Phillips #0 Screwdriver (1)

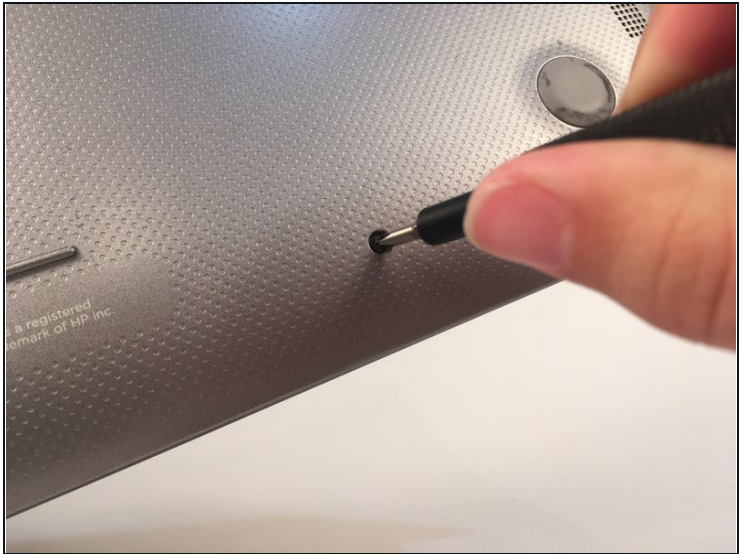
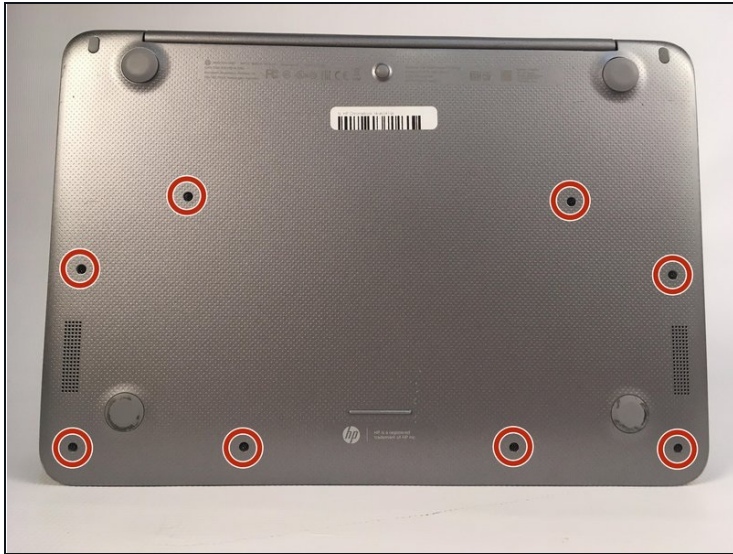
Tweezers (1)

Spudger (1)

Phillips #000 Screwdriver (1)

---

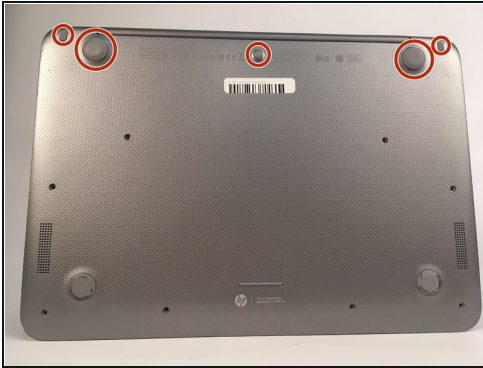
## Step 1 — Keyboard



- You will need a pair of [tweezers](#) and a Phillips screwdriver.
- Remove eight 5mm Phillips #0 screws from the back cover of the laptop.

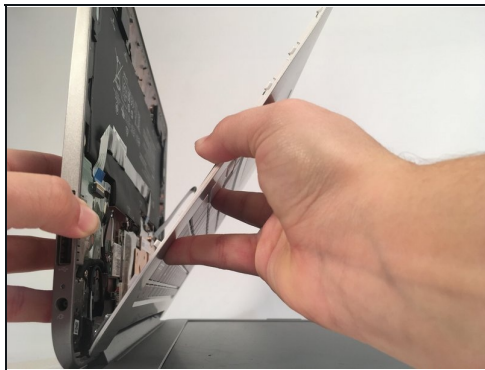


## Step 2



- Using a pair of tweezers, remove the five grey silicone covers.
- Remove the five 5mm Phillips #0 screws beneath the grey silicone covers.
- Place them aside where they will not be lost.

## Step 3



- Carefully open your Chromebook case and gently pull the keyboard away from the back panel.
- Place the keyboard aside. Inspect for any visual damage or marks.

## Step 4 — Battery



- Remove the four 3mm Phillips #000 screws holding the battery in place.

## Step 5



- Slide a spudger underneath the white strip over the battery to gently pull the strip away from the adhesive sticking to the battery.
- Using a pair of [tweezers](#), grip the black tape connected to the battery, and gently pull back to unplug the battery.

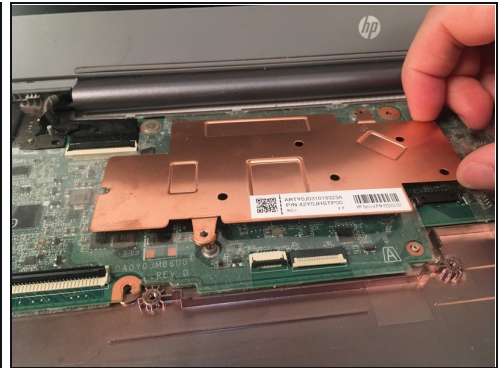
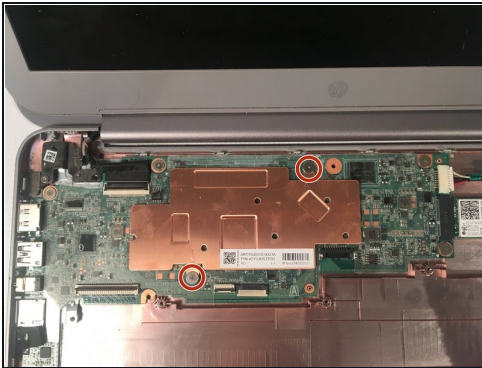


## Step 6



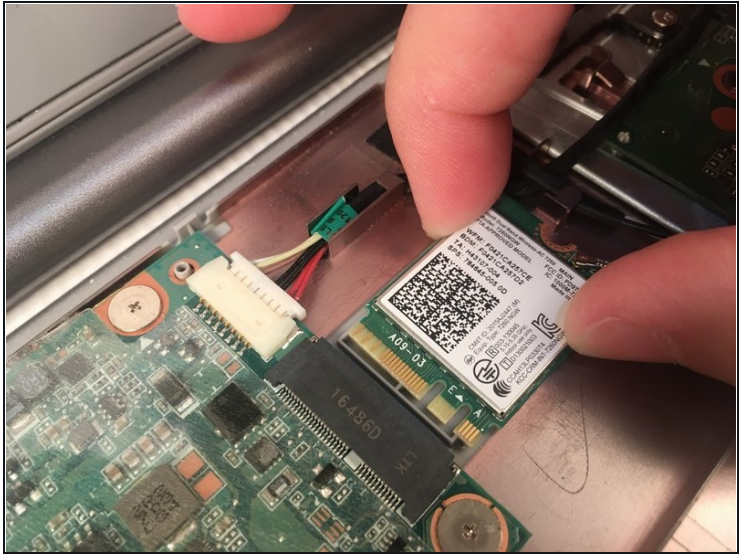
- Carefully lift the battery out of the laptop.

## Step 7 — Heat Sink



- Remove the two 1.5mm Phillips #000 from the copper heat sink on top of the motherboard.
- Remove the heat sink from the laptop.

## Step 8 — Wireless Card



- Remove the single 2.5mm Phillips #00 screw from the wireless card.
- Gently pull the wireless card from the motherboard to remove it.

---

To reassemble your device, follow these instructions in reverse order.