



# TELUS Wi-Fi Hub (Arcadyan) Teardown

Explore the internal structure of the PureFibre/PureFiber Optik TV Modem

Written By: Christine Tan



## INTRODUCTION

This is the hub used to power TELUS Boost WiFi. TELUS is a telecommunications provider in BC, Canada.

This device does not have a FCC ID as it is only sold in Canada. Its Industry Canada ID is IC: 4711A-PRV65B.

You can view all photos in higher resolution here <https://imgur.com/a/hNO55VL>

It is not recommended to open your device. End customers of internet service should contact the ISP for support.

## Step 1 — TELUS Wi-Fi Hub (Arcadyan) Teardown



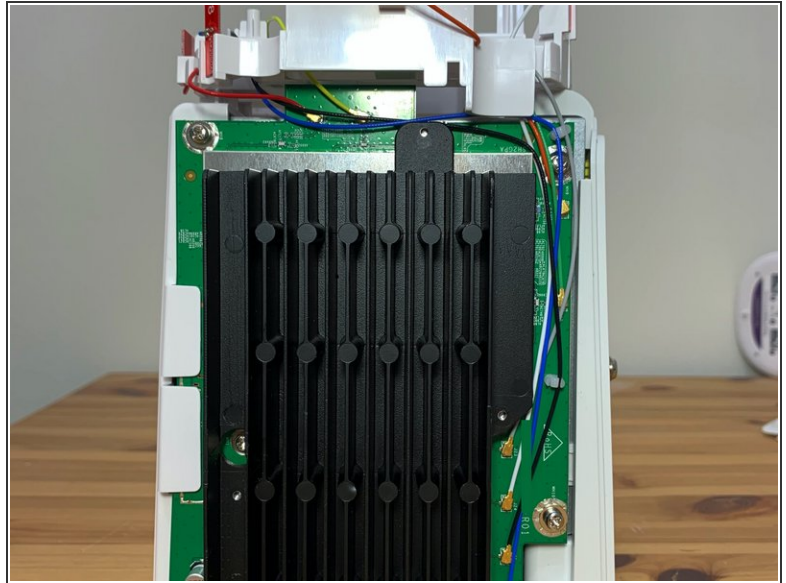
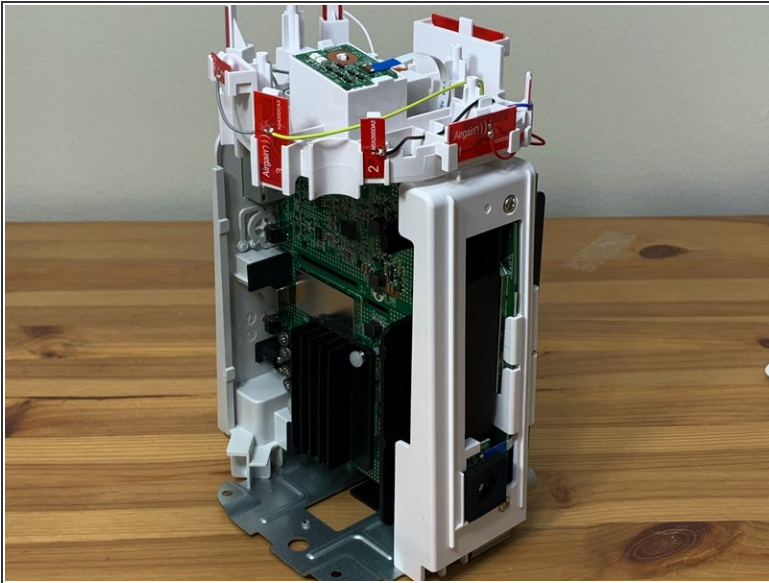
- External photos.

## Step 2 — External Photo 2



- External photo 2

### Step 3 — Internal Structure



- A large heatsink on the back of the unit serves to keep the unit cool without installation of a fan.

### Step 4 — All other photos



- iFixit does not support the full resolution of images. Please refer to <https://imgur.com/a/hNO55VL>

To reassemble your device, follow these instructions in reverse order.