



Samsung Galaxy S10 Screen Replacement

Follow this guide to remove and replace a...

Written By: Arthur Shi



INTRODUCTION

Follow this guide to remove and replace a broken screen for your Samsung Galaxy S10. This involves removing the back cover in order to disconnect the screen from the motherboard.

This guide shows how to destructively remove the screen while retaining the original frame.



TOOLS:

- [iFixit Opening Tool](#) (1)
- [Tweezers](#) (1)
- [Phillips #00 Screwdriver](#) (1)
- [iOpener](#) (1)
- [Spudger](#) (1)
- [iFixit Opening Picks \(Set of 6\)](#) (1)
- [Suction Handle](#) (1)



PARTS:

- [Galaxy S10 Screen and Digitizer](#) (1)
- [Precut Adhesive Card](#) (1)

Step 1 — Heat the back cover



- Unplug and power off your phone before you begin.
- [Heat an iOpener](#) and apply it to the **back cover's right edge** for two minutes.
 - ⓘ A hair dryer, heat gun, or hot plate may also be used, but be careful not to overheat the phone—the display and internal battery are both susceptible to heat damage.
- As you wait, take a look at the image of the removed back cover and take note of where the adhesive is located.

Step 2 — Create an opening gap



- Rest the heated right edge of the phone on something that is about 0.5 inches (13 mm) thick. This angles the phone for the opening tool.
- Brace the left edge of the phone with your fingers so that the phone won't slide. Pull on the suction cup with firm pressure.
- Press the edge of an opening tool into the seam between the back cover and the frame.
- With the opening tool in place in the seam, slide it back and forth along the seam to loosen the back cover.

Step 3 — Insert an opening pick



- Heat an iOpener and apply it to the same edge of the phone for two minutes.
 - Apply a suction cup to the back of the phone, as close to the center of the right edge as possible ([where the adhesive is narrowest](#)).
 - Pull on the suction cup with strong, steady force to create a gap between the back cover and the frame.
 - Insert the point of an opening pick into the gap.
- i** Due to tight tolerances, this may take multiple attempts.
- If you are having trouble creating a gap, your best bet is to apply more heat to the edge and try the previous step again. The glass is heated enough when it is barely too hot to touch.
 - You can try applying a few drops of high concentration (over 90%) isopropyl alcohol into the seam to help loosen the adhesive.

⚠ Do not apply excessive force with the pick, or you will risk cracking the back cover glass.

Step 4 — Slice through the adhesive



- Slide the opening pick along the edge of the phone, slicing through the adhesive.
⚠ Do not attempt to slice the adhesive holding the corners down before applying heat. If you do, you may crack the back cover.
- Leave a pick in the seam to prevent the adhesive from re-sealing.

Step 5



- Apply a heated iOpener to the bottom edge of the phone for two minutes.
- Insert an opening pick into the right edge near the bottom right corner.
- Carefully slide the pick around the corner. Continue cutting along the bottom edge and around the bottom left corner.
 - ⓘ If the cutting feels difficult, re-apply heat to the edge before continuing.
- Leave an opening pick in the seam to prevent the adhesive from re-sealing.

Step 6



- Continue heating and slicing around the remaining edges of the phone.
- ⓘ When cutting around corners, be sure that the corner is thoroughly heated.

Step 7



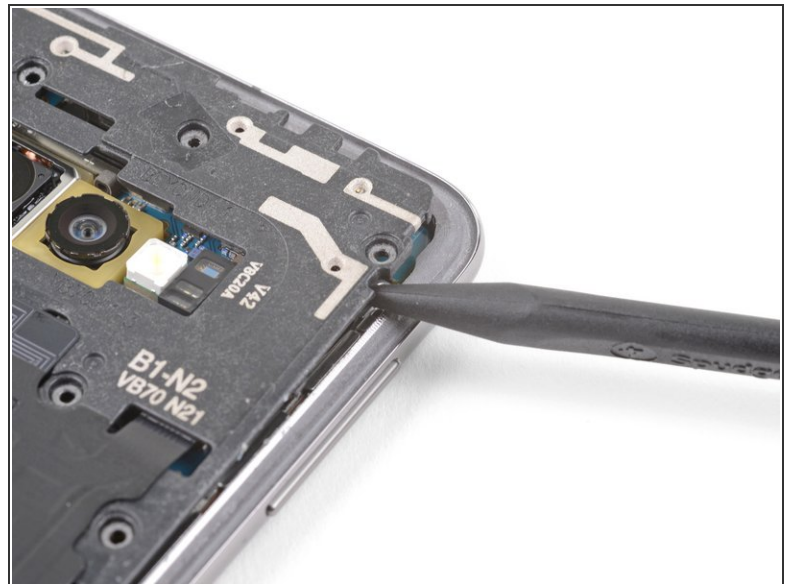
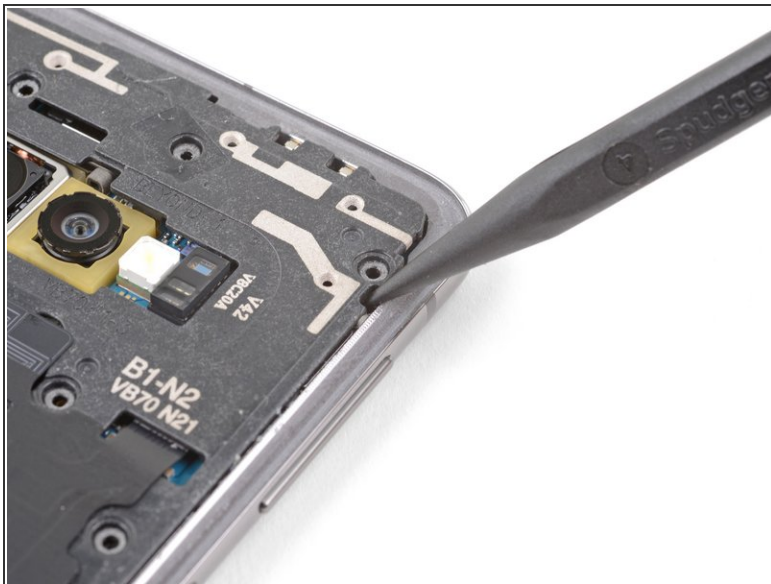
- Once you have sliced around the phone, twist an opening pick in one of the edges to help separate the back cover from the frame.
 - Lift the back cover slowly. Use opening picks to slice any remaining adhesive.
 - Remove the back cover.
- ✦ During reassembly, this is a good point to power on your phone and test all functions before you seal the back cover in place. Be sure to power your phone back down completely before you continue working.
- ✦ [Follow this guide](#) to reinstall the back cover, transfer and install the camera bezel, and replace the adhesive.
- ⓘ If desired, you may reinstall the back cover without replacing the adhesive. Remove any large chunks of adhesive that might prevent the back cover from sitting down flush. After installation, heat the back cover and apply pressure to secure it.

Step 8 — Remove the midframe



- Remove the eight 4 mm Phillips screws securing the top midframe to the phone.

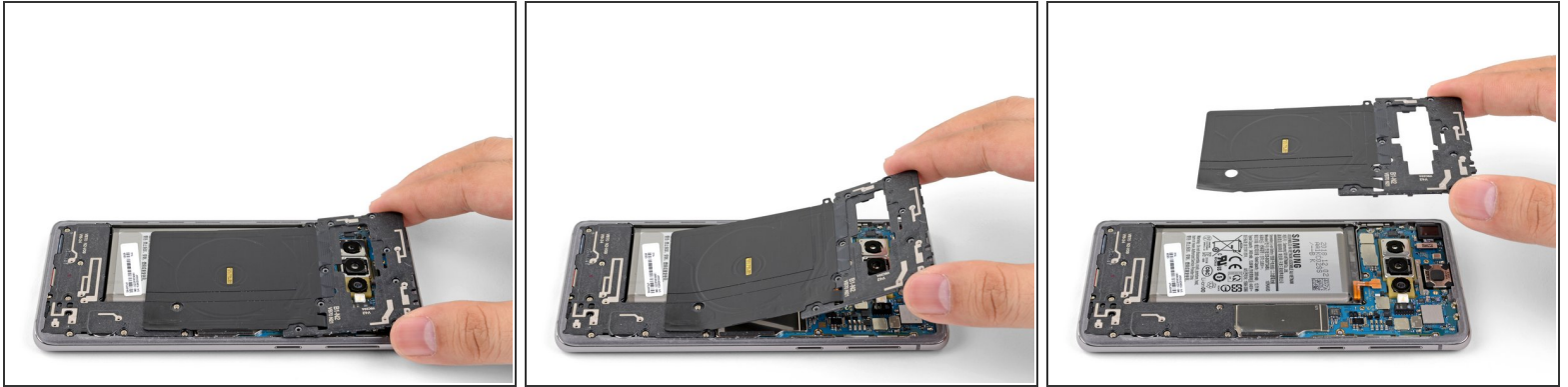
Step 9



- The midframe is still held in place by a few plastic clips around the edge.
- Insert the point of a spudger into the notch on the right edge of the midframe, near the volume up button.
- Pry up to loosen the midframe from the phone.

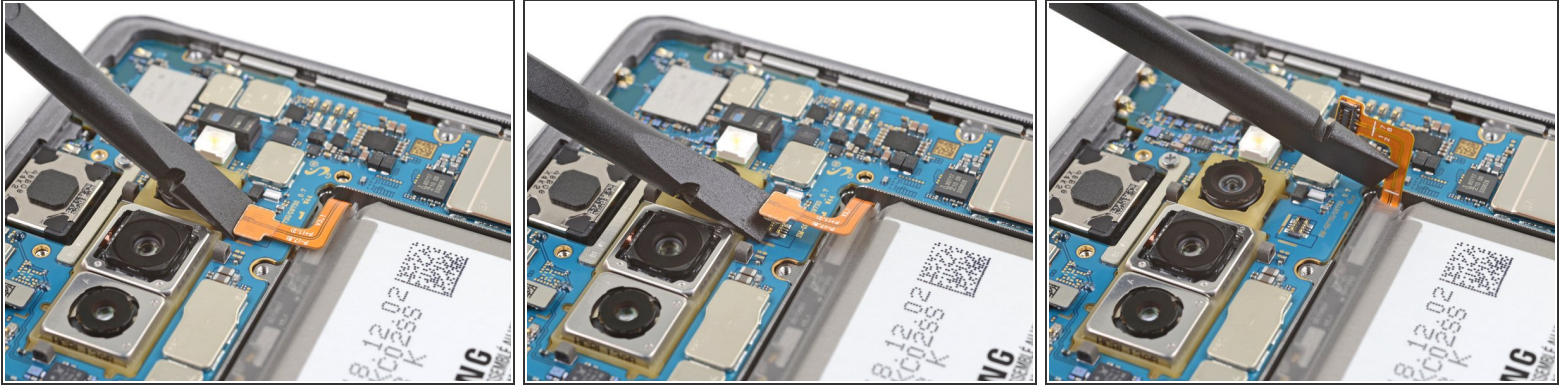
This document was generated on 2023-04-13 11:05:47 PM (MST).

Step 10



- Lift the midframe from the top corners and remove it from the phone.
 - ❗ The top midframe may stick to the lower midframe at its bottom right corner. If that happens, slowly peel it off.
- To reinstall the top midframe:
 - [Align the midframe's top edge to the phone](#) and lay the frame down on the phone.
 - [Use fingers to apply pressure along the midframe perimeter](#) to snap the midframe clips back into place. The edges should sit flush against the phone edge.

Step 11 — Disconnect the battery



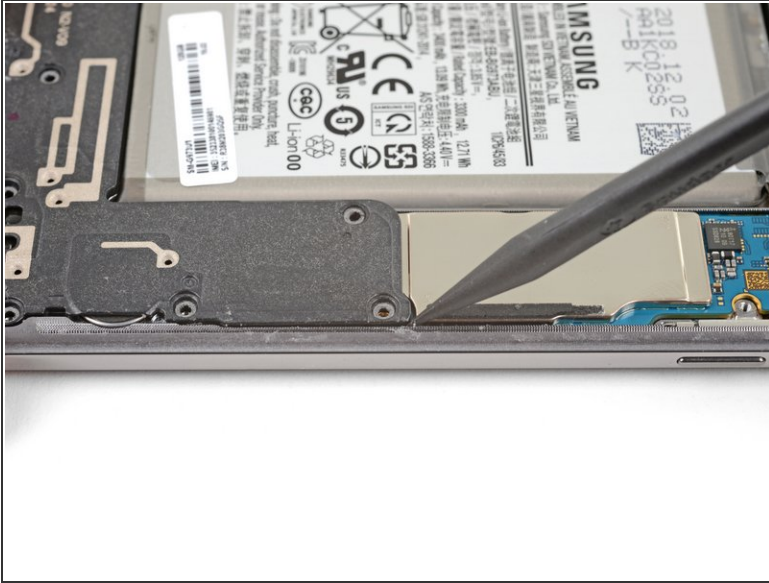
- Insert the flat end of a spudger underneath the battery connector, which is attached to the motherboard below the rear-facing camera.
 - Pry upwards to disconnect the connector from its socket.
- ⚠ When you disconnect connectors like these, be careful not to dislodge the small surface-mounted components surrounding the socket.
- Gently push the battery's flex cable away from the motherboard socket to prevent accidental contact.


Step 12 — Remove the loudspeaker



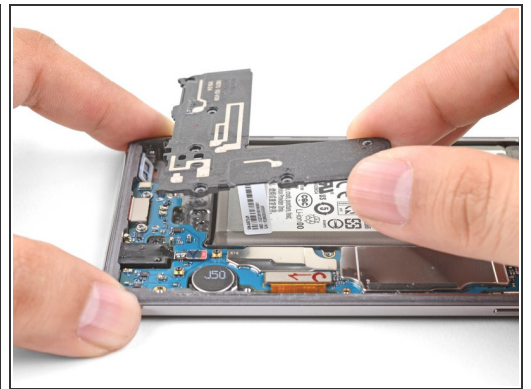
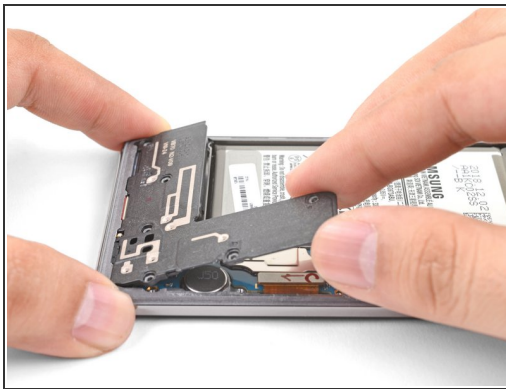
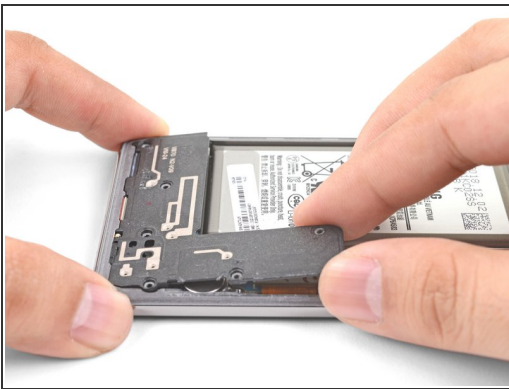
- Remove the seven 4 mm Phillips screws securing the lower midframe.

Step 13



-  The midframe is still held in place by a few plastic clips around the edge.
- Insert the point of a spudger underneath the top right corner of the lower midframe.
 - Pry up to release the midframe from the phone.

Step 14



- Grasp the loosened end of the midframe with your fingers and lift upwards slowly.
- Wiggle the midframe slightly to help release the remaining edge clips.
- Remove the lower midframe. The loudspeaker is built into the lower midframe.

Step 15 — Disconnect the screen



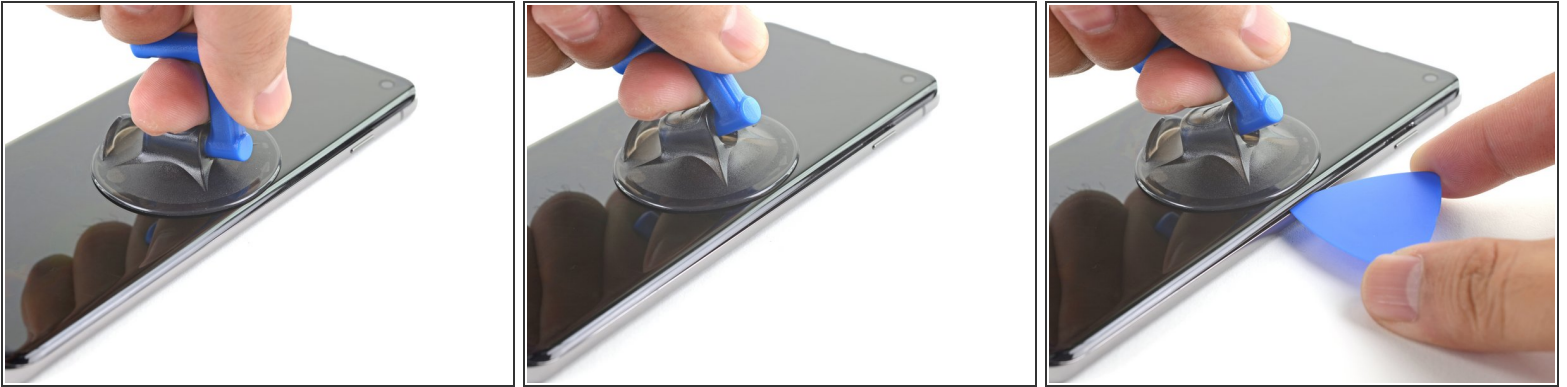
- Use the flat edge of a spudger to pry up and disconnect the display connector from its motherboard socket.

Step 16 — Slice through the screen adhesive



- Flip the phone over so that the display is facing up.
- Apply a heated iOpener to the right edge of the screen for two minutes.
 - ⓘ A hair dryer, heat gun, or hot plate may also be used, but be careful not to overheat the phone—the internal battery is susceptible to heat damage.

Step 17



- Apply a suction cup to the heated edge of the display.
- Pull up on the suction cup with strong, steady force to create a gap.
 - ⓘ Depending on the age of your device, this may be difficult. If you have trouble, apply more heat and try again.
- Insert the point of an opening pick into the gap.

Step 18



- Slide the opening pick along the right edge to slice through the adhesive.
- Leave the opening pick in the corner to prevent the adhesive from resealing.

Step 19



- Apply a heated iOpener to the bottom edge of the display for one minute.

Step 20



- Slide an opening pick along the bottom edge to slice through the adhesive.
- Leave the opening pick in the corner to prevent the adhesive from resealing.

Step 21



- Repeat the heating and slicing procedure for the remaining display sides.

Step 22



- Use an opening pick to pry open and slice through any remaining adhesive.

Step 23 — Remove the screen



- Thread the display panel connector through the frame.
- If you're having trouble, you can choose to cut the display panel cable in order to remove the display.

Step 24



- Remove the screen.
- ✦ If you are using a custom-cut adhesive, [follow this guide](#) for instructions on how to remove the old adhesive and attach the replacement screen.
- ✦ If you're using Tesa tape to reattach the screen, [follow this guide](#).

To reassemble your device, follow these instructions in reverse order.

After you've completed the repair, [follow this guide](#) to test your repair.

Take your e-waste to an [R2 or e-Stewards certified recycler](#).

Repair didn't go as planned? Try some [basic troubleshooting](#), or ask our [Answers community](#) for help.