



Akai MPK25 Beat Pad Replacement

This guide will demonstrate how to properly replace the beat pad sensors without damaging any of the surrounding components in the device.

Written By: Serbinder Singh



INTRODUCTION

Problems with the beat pad are common with this device. Use this guide to replace a defective beat pad sensor.



TOOLS:

- [8" Needle Nose Plier](#) (1)
- [Phillips #2 Screwdriver](#) (1)



PARTS:

- [Beat pad sensor](#) (1)

Step 1 — Face Plate



- Remove all the selector knob covers by pulling them off.

Step 2



- Using needle nose pliers, remove the washers from the four corner selector knobs.

Step 3



- Flip the device over. Using a Philips #2 screw driver, remove the fourteen 10.3 mm black screws holding the back panel in place.

Step 4



- Carefully flip the device to the front making sure you secure the face plate and the chassis together.
- ⚠ Please use care in following the step above to avoid ripping the ribbon cables connecting the two sides.

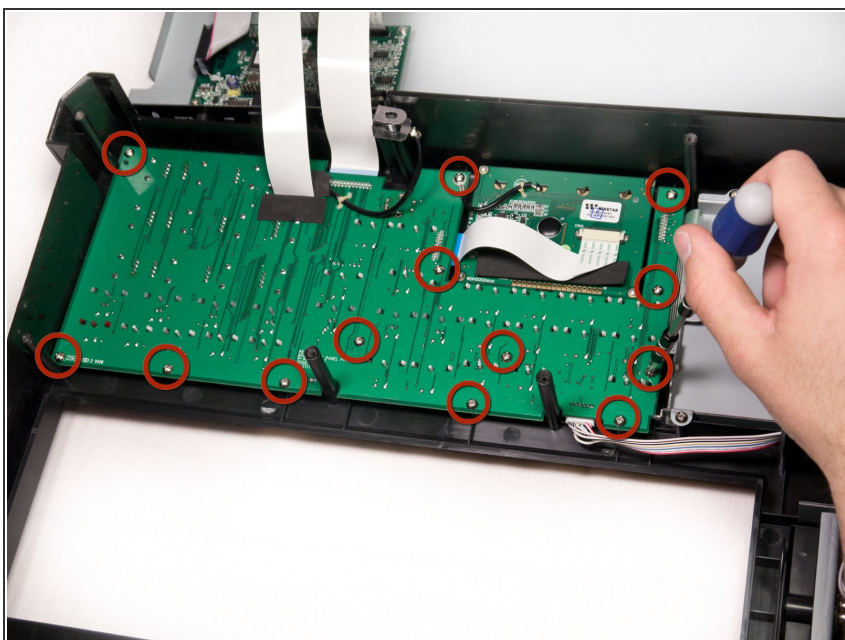
Step 5



- Rotate the device 180 degrees and carefully remove the face plate by slightly lifting the screen side towards you and then sliding the bottom out from under the keys.

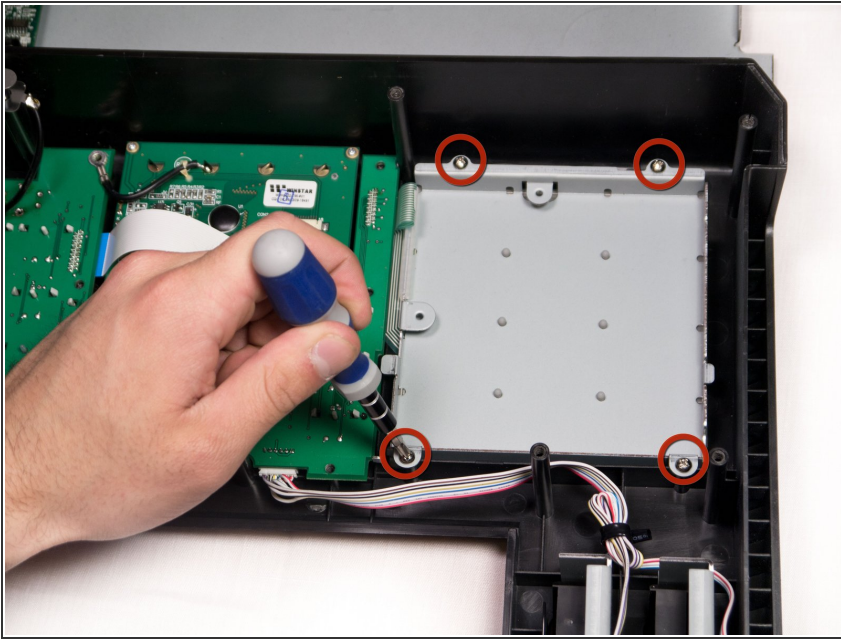
⚠ Use care when doing the step above so that the ribbon connectors which connect the top of the chassis to the top of the face plate are not damaged.

Step 6 — Beat Pad



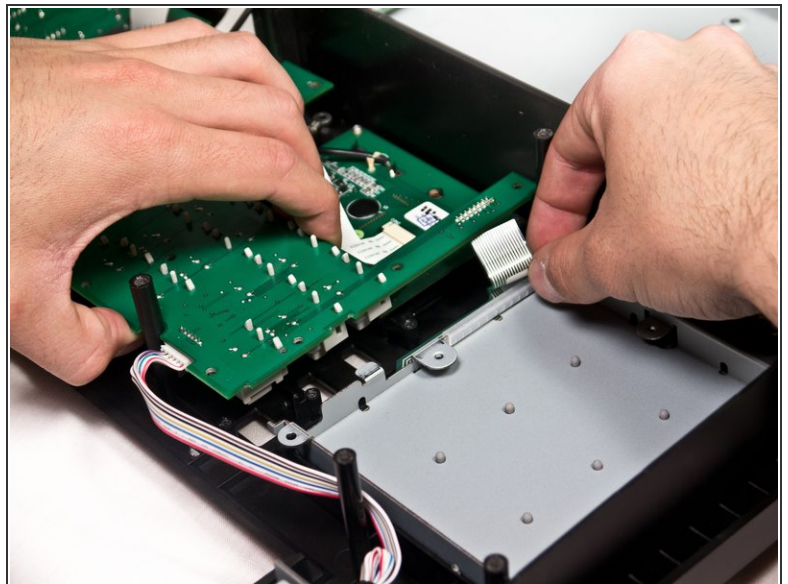
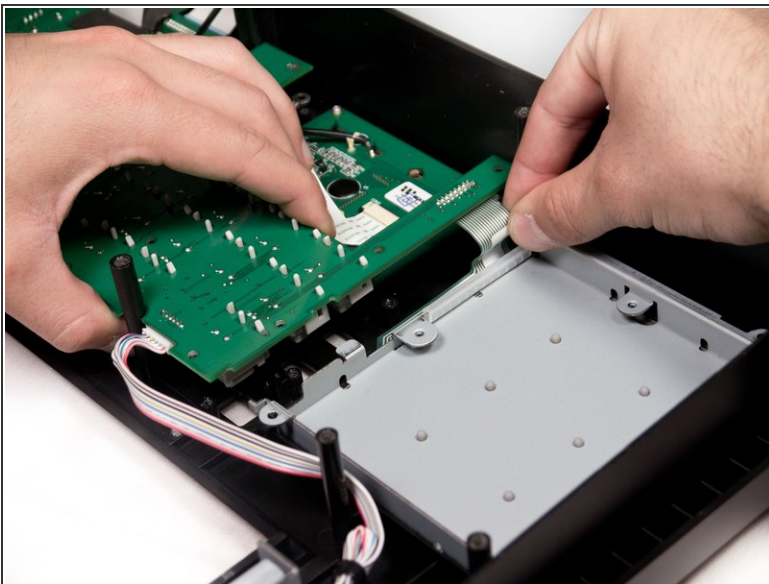
- Using a Phillips #2 screwdriver, remove the thirteen 9.8 mm silver screws holding the mother board to the face plate.

Step 7



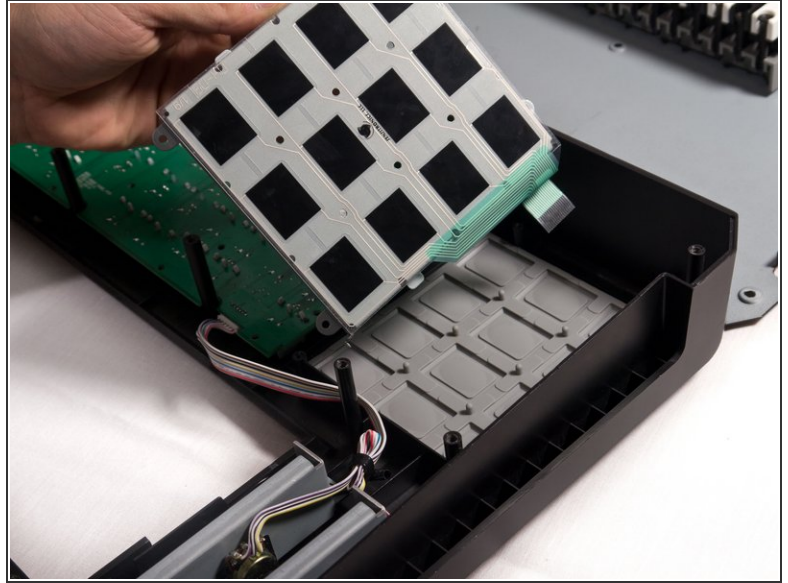
- Using a Phillips #2 screwdriver, remove the four 9.8mm screws holding in the base of the beat pad.

Step 8



- Slightly lift the mother board near the edge of the beat pads and wiggle the beat pad ribbon connector free.

Step 9



- Remove the beat pad sensor from the face plate.

To reassemble your device, follow these instructions in reverse order.