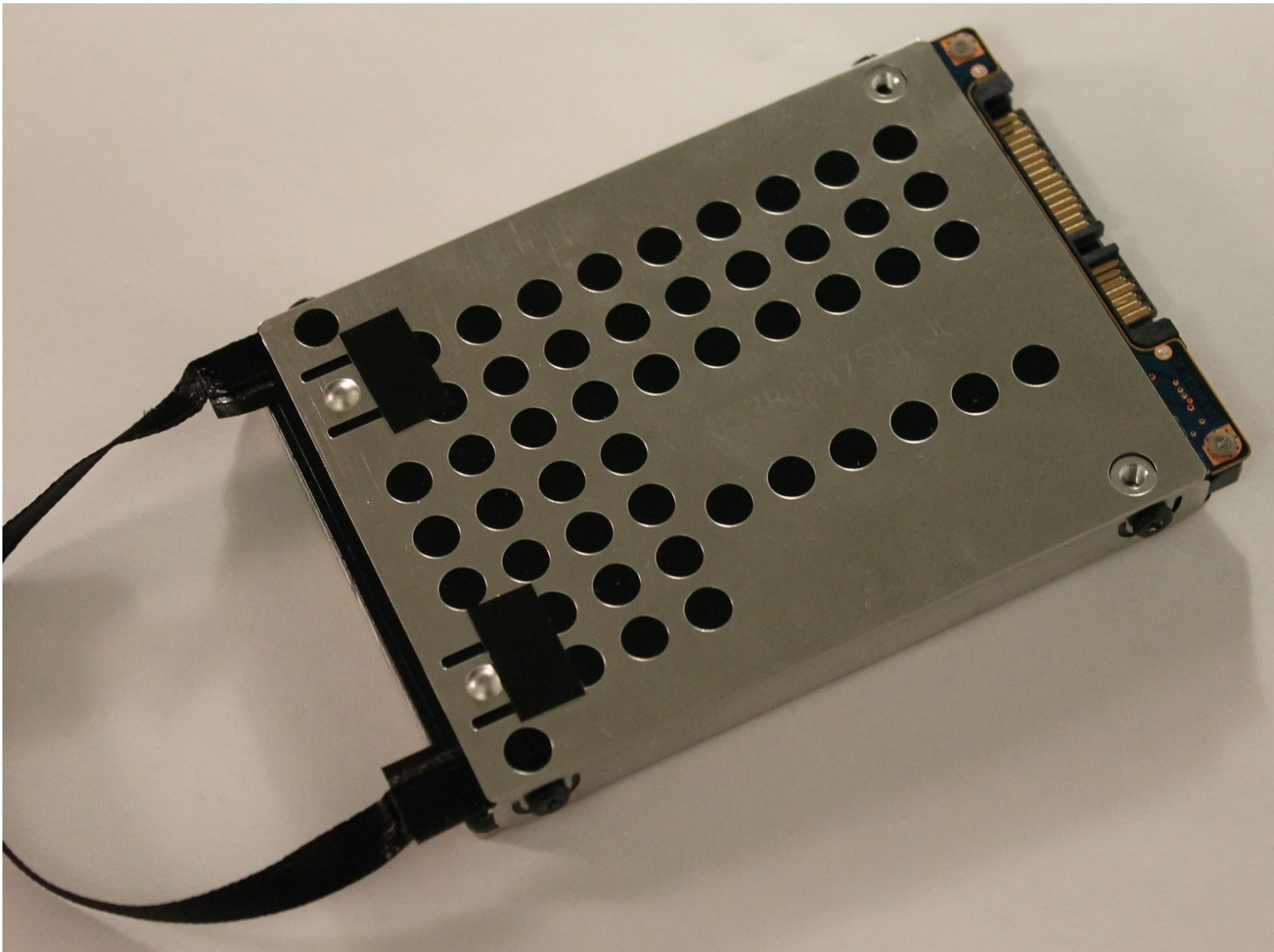




# Toshiba Satellite L305-S5875 Hard Drive Replacement

This guide will show you how to replace your hard drive.

Written By: David Zhuo



---

## INTRODUCTION

If your hard drive is corrupted or you want to install a new hard drive with more space, replacing it is fairly simple.



### TOOLS:

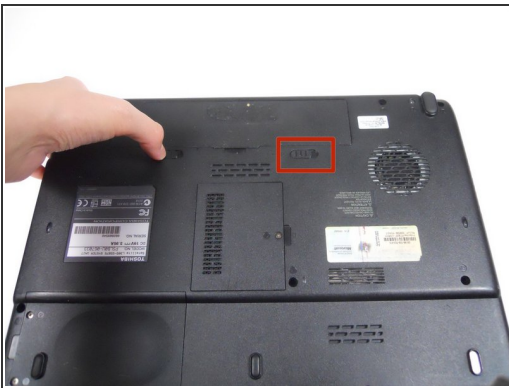
- [Phillips #0 Screwdriver](#) (1)
-

## Step 1 — Battery



- Close the laptop lid and flip the laptop over.
- Switch the lock button on the left to the unlock position. (The unlock position is to the left side.)

## Step 2



- Push the release button to the right.
- Hold the release button to the right and lift the battery out of its housing.

## Step 3 — Hard Drive



- Flip the laptop over so that you can see the back. Make sure that the volume scroller is closest to you when it is flipped over.
- Locate the hard drive compartment. This is in the bottom left hand side of the laptop.
- Remove the two 5 mm type-0 Phillips head screws that secure the door and save them to a safe location.
- Remove the hard drive cover.

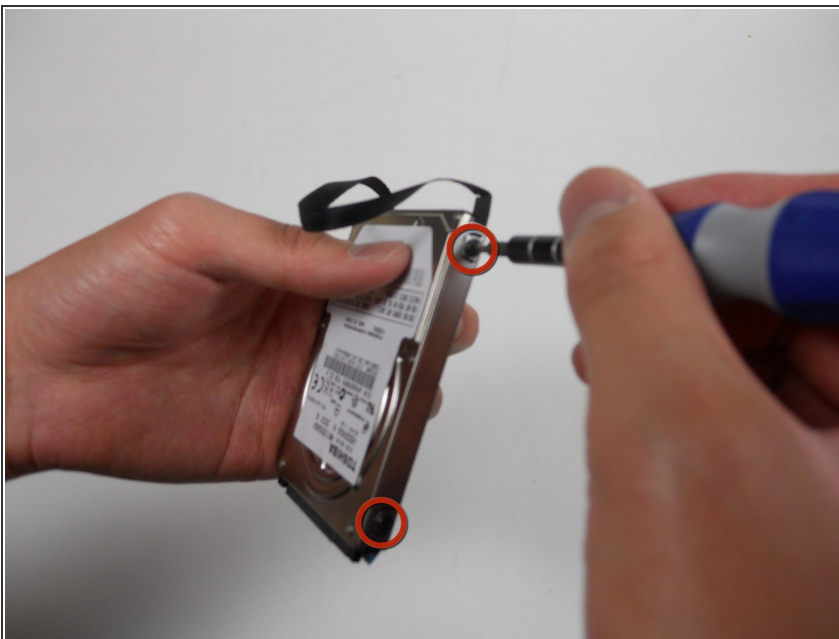


## Step 4



- With the small door removed, find the black ribbon that is attached to the hard drive tray.
- Carefully pull the ribbon to the left so that the hard drive tray slides out neatly.

## Step 5



- Remove the four 4.2 mm type-0 Phillips head screws located on the side of the hard drive enclosure.

## Step 6



- Remove the hard drive from the tray.
- ☑ Make sure that when you slide the tray back into place, that the ribbon remains easily accessible.

To reassemble your device, follow these instructions in reverse order.