



# How to replace the screen of a Lenovo Ideapad 300-15IBR

The only problem with electronics is that over...

Written By: Benjamin Liu



# INTRODUCTION

The only problem with electronics is that over time they deteriorate. In some cases, they just get slow and freeze, and sometimes components stop working completely. If you are an owner of a Lenovo Ideapad this guide can be of use to you. This guide is applicable to both the 300-15IBR and 15ISK. Both laptops have similar builds so this guide can be used for both. In this guide, we use the Ideapad 300-15IBR.

Before beginning the repair, ensure that the laptop is completely shutdown and has no electric charge left in the screen. The screen is one of the most fragile parts of a laptop therefore you need to have to utmost care when operating around the screen. Take caution when removing any and all components from the face of the screen, as damage is easily incurred when mishandled. There are also fragile parts that are connected to the screen such as the ribbon strip that is connected to the bottom of the screen. Take care to remove these items gently to avoid damage.

---

## TOOLS:

[Phillips #1 Screwdriver](#) (1)

[iFixit Opening Tool](#) (1)

---

## Step 1 — Screen



- Carefully remove the laptop screen impact strips using the plastic spudger

 Ensure impact strips are removed in one piece with even pressure.

## Step 2



- Carefully remove the plastic bezel from the computer screen using a plastic spudger.
- ⓘ Loud cracking noises will occur. Do not be alarmed.
- ⚠ Ensure the bezel is removed with even pressure. Failure to remove evenly can result in broken components.

## Step 3



- Using the Phillips screwdriver, remove four 0.8 mm Phillips screws at each mounting point of the screen.
- ⓘ If you have a magnetic bowl, utilize it to keep track of the screws.

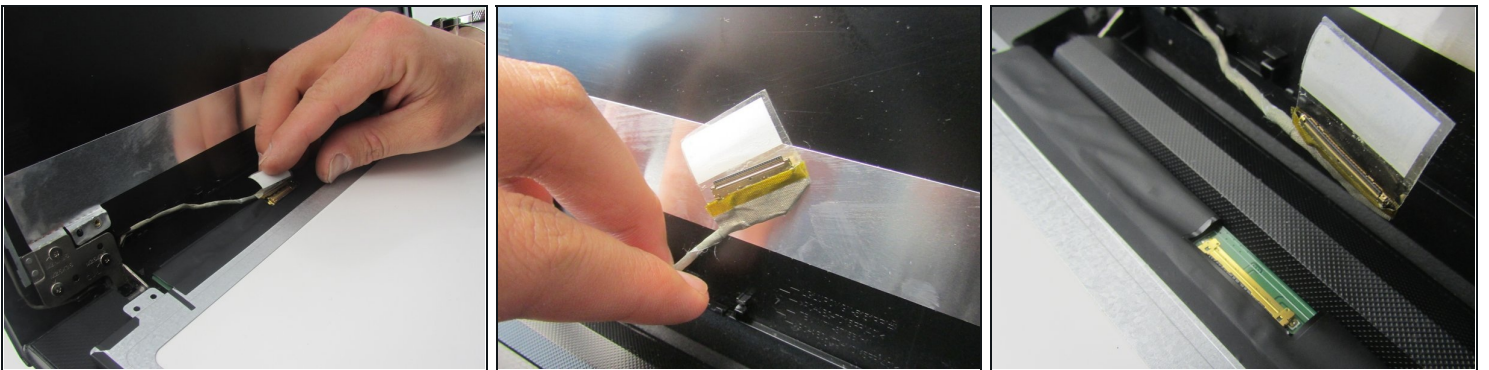


## Step 4



- Carefully separate screen from case, ensuring ribbon strip at the bottom doesn't become disconnected.

## Step 5



- Gently separate the ribbon strip connector from the back of the screen.
- ① If possible, carefully peel the sticker off laptop housing without separating it from the connector.
- ① Take caution to ensure the ribbon strip is disconnected with even pressure and the sticker above it has no contact with case.

## Step 6



- Replace screen with new LCD screen and gently reconnect the ribbon strip.

⚠ Ensure that the ribbon strip maintains contact with the channel it is laid in.

---

To reassemble your device, follow these instructions in reverse order. Be sure to test whether the screen works before putting the plastic bezel back just in case.