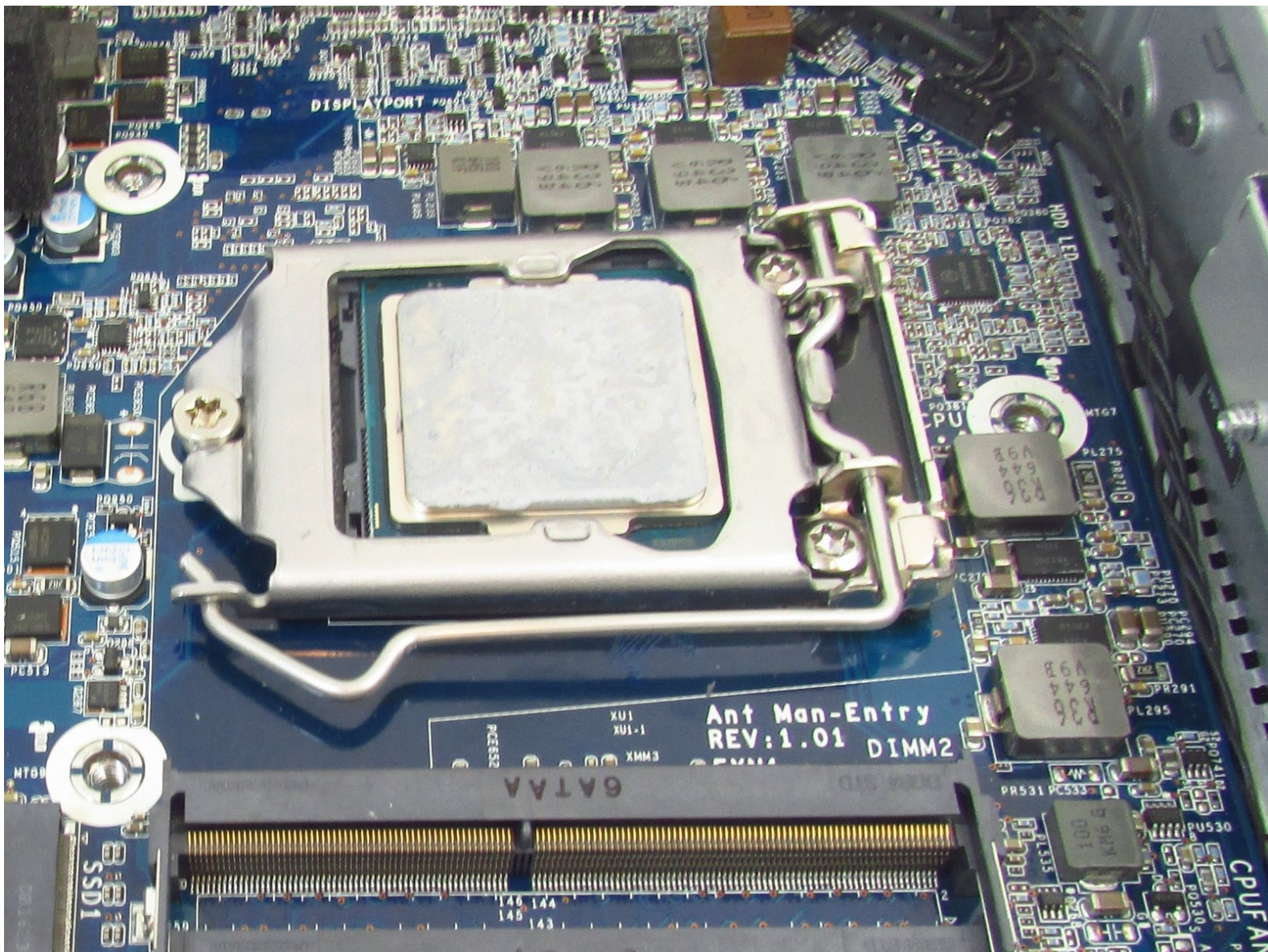




Written By: Michael Benedict



Page 1 of 9

INTRODUCTION

The CPU processor is the part of your device that handles multiple tasks and processes at once. If you need to replace the CPU of your HP Z2 Mini G3, follow this guide.

Be sure that the power is off and the A/C power cord has been disconnected before starting. Removing hardware while the power is on could damage the device or harm you.

Components of the device are subject to static damage. Work on a hard, grounded surface to prevent damage to the workstation.

Step 1 — Access Panel



- Turn the device so the back-side of the device is facing you.

⚠ Be sure that the power is off and the A/C power cord has been disconnected before starting. Removing hardware while the power is on could damage the device or harm yourself.

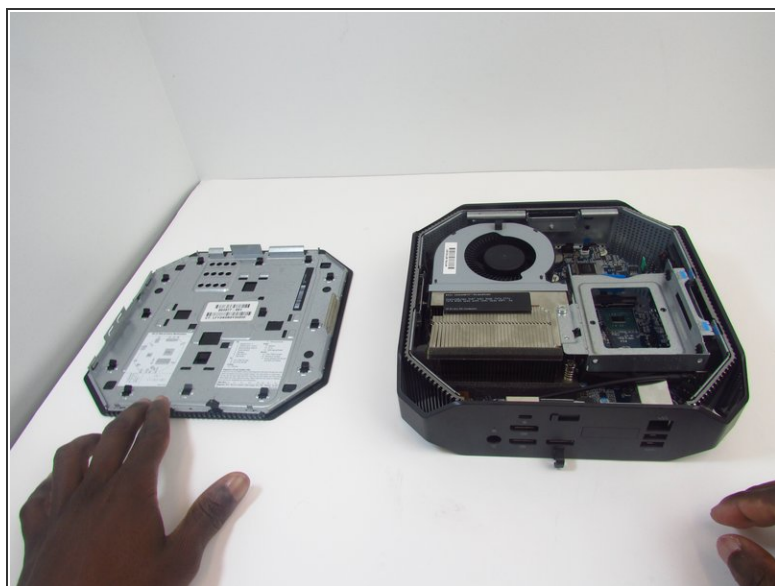
⚠ Components of the device are subject to static damage. Work on a hard, grounded surface to prevent damage to the workstation.

Step 2



- Slide and hold the latch in the direction of the engraved arrow (to the right).

Step 3



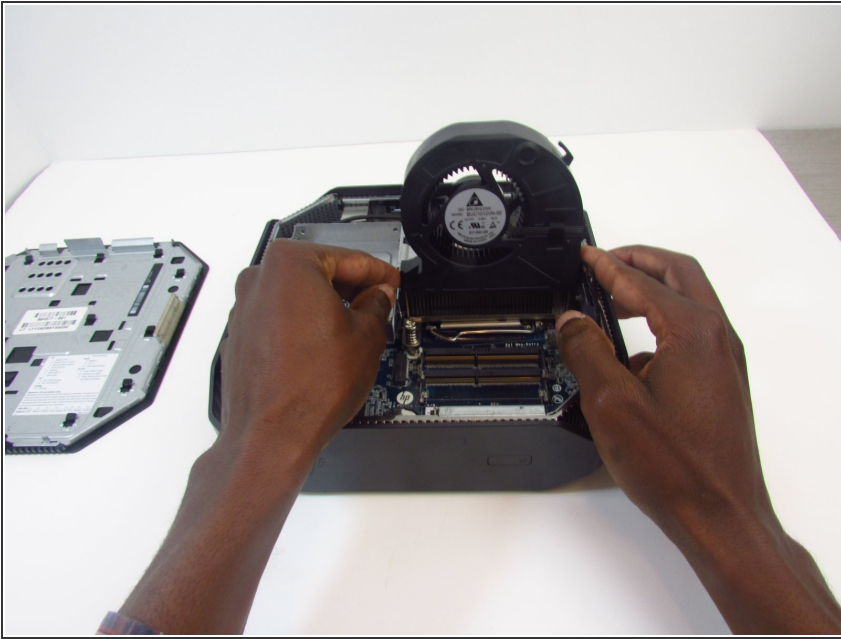
- While holding the latch, lift the access panel upwards and towards yourself and set it aside upside-down.

Step 4 — CPU Fan



- Rotate the device so the front side is facing you (the side with the power button) and locate the CPU fan.

Step 5



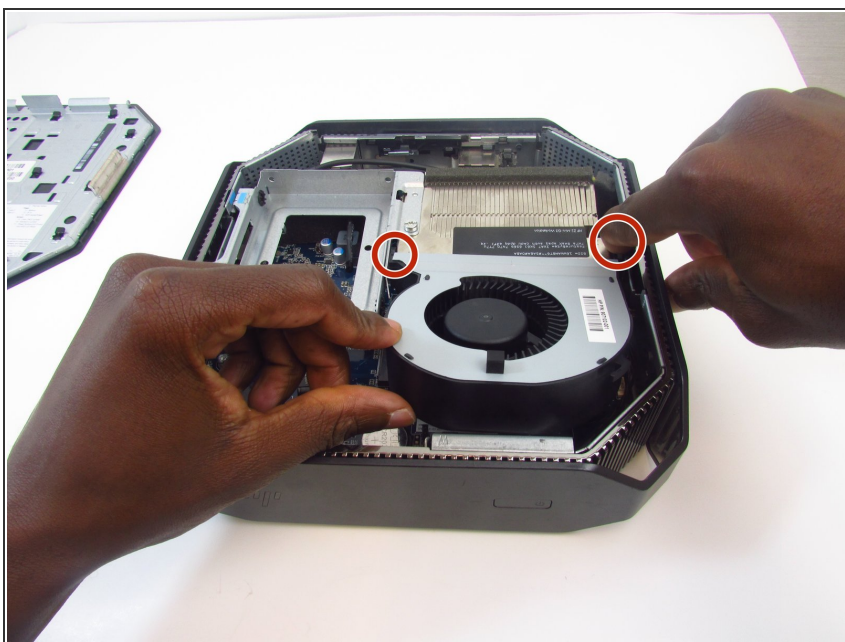
- Swing the fan upward, to a 90-degree angle.

Step 6



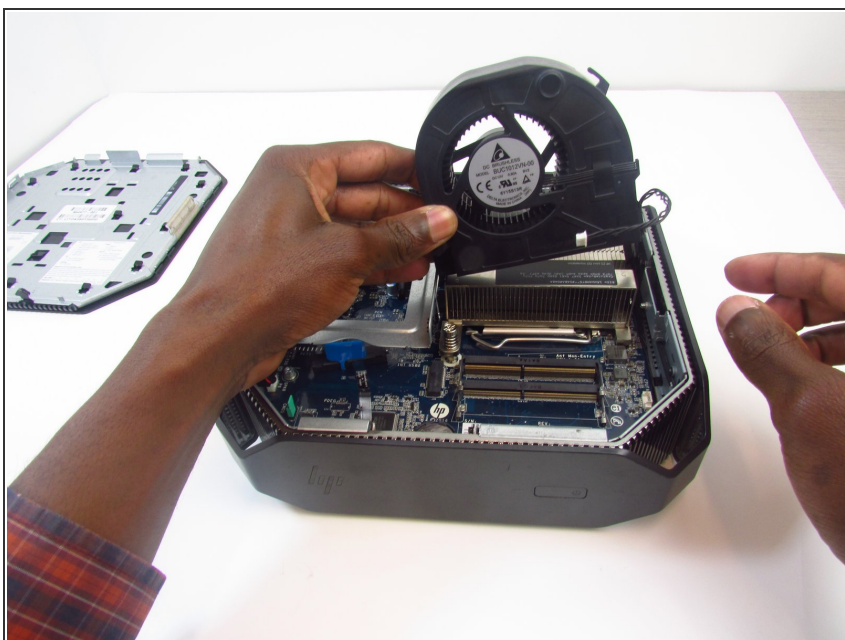
- Carefully disconnect the CPU fan by pulling out the wires from the motherboard.

Step 7



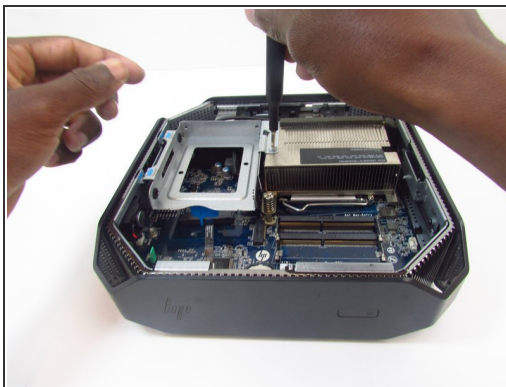
- Swing the fan back down and carefully unhook the CPU fan notches by pulling each tab away from the heat sink holes.

Step 8



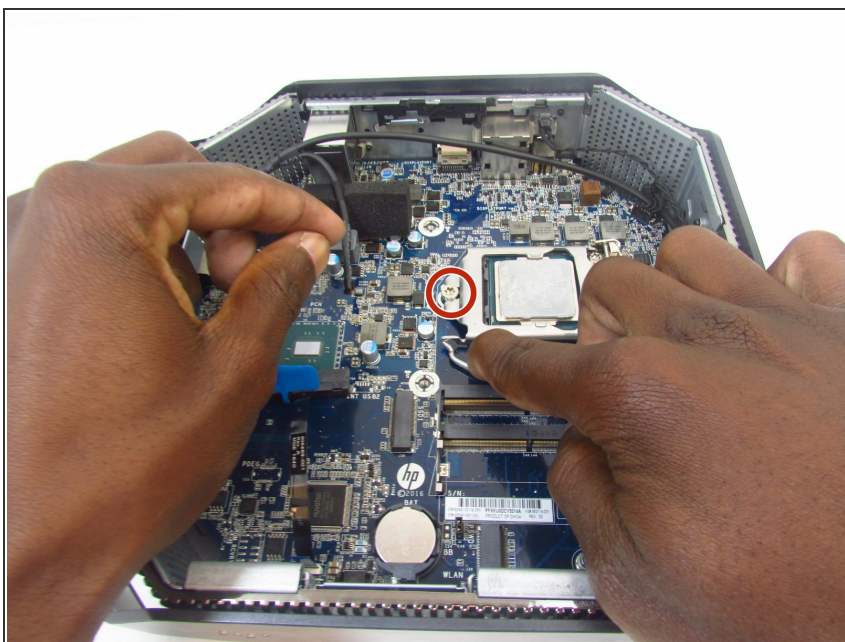
- Swing the fan up again and pull it out.

Step 9 — CPU Processor



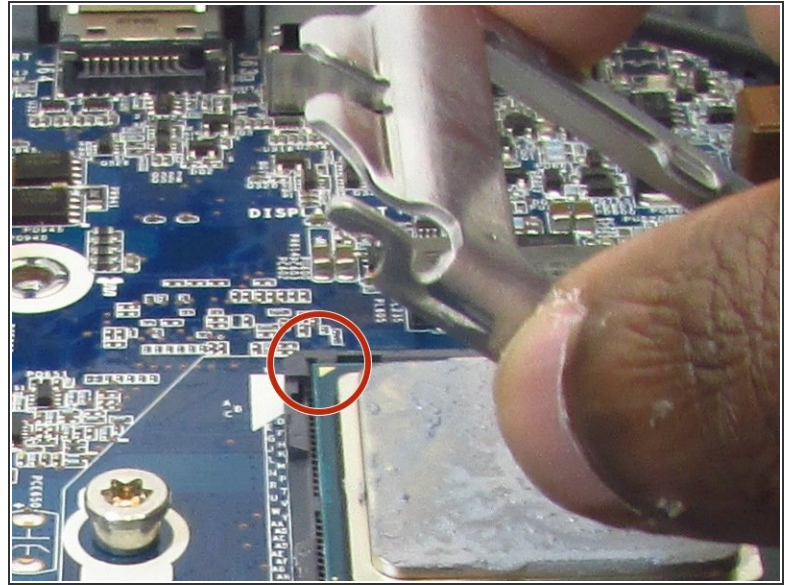
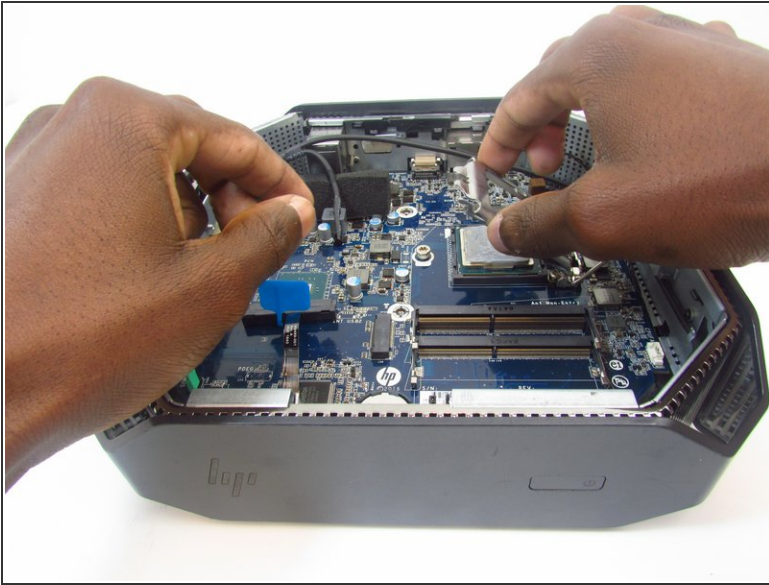
- Remove the 9mm Torx screw with a T15 Torx screwdriver to release the SSD assembly.
- Lift the assembly upwards to remove it.

Step 10



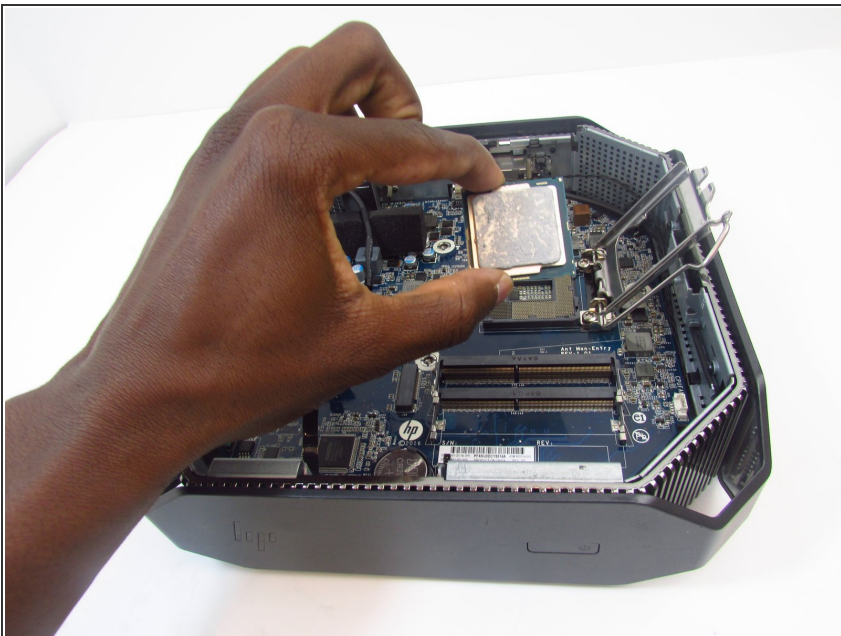
- Pull the metal arm out from under the frame and lift it up. The frame should slide back from under the screw.

Step 11



- Lift the frame upward to gain access to the processor
- ✦ Take note of a triangular mark on one of the corners of the processor and bracket it is mounted on. The triangles must be aligned together during reassembly.

Step 12



- Grip the processor on each side, carefully lifting it up.
- ⚠ Do not touch the underside of the processor. Doing so may damage the processor and prevent a connection to the motherboard.
- ✦ Be careful inserting the new processor. The connectors on the new one and the motherboard are fragile and damage easily.

To reassemble your device, follow these instructions in reverse order.