



Toshiba Satellite L15W-B1208X Battery Replacement

How to replace/remove the battery in a Toshiba Satellite L15W-B1208X.

Written By: Brian Herbster



INTRODUCTION

This guide demonstrates how to remove a Toshiba Satellite L15W-B1208X battery. Reasons the battery might need replacing include not holding a charge, not charging, corrosion, damage, or swelling of the battery itself. If the battery has corrosion, is damaged, or has swollen then wear rubber gloves so that the battery fluids do not leak onto your hands. After the battery is removed, take it to the nearest recycling center that accepts lithium ion batteries for proper disposal.



TOOLS:

- [Phillips #1 Screwdriver](#) (1)
 - [iFixit Opening Picks set of 6](#) (1)
 - [iFixit Opening Tools](#) (1)
 - [Magnetic Project Mat](#) (1)
-

Step 1 — Battery



⚠ Turn off your laptop before starting.

- Flip the laptop over so that the model number stickers face the ceiling.

Step 2




- Use a Phillips #1 screwdriver (PH1 bit) to remove the ten 5mm screws that secure the bottom cover.


Step 3



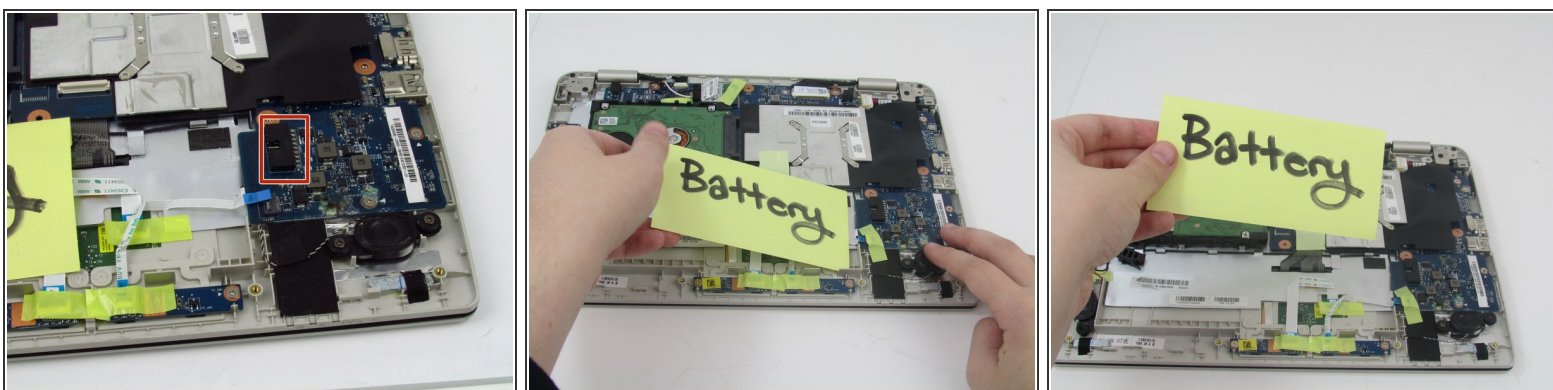
- Use an opening pick by sliding it in the seam between the bottom casing and the main body of the laptop. Separate the bottom casing from the main body.

 It is recommended that you start on a corner and work your way along the edge of the cover.

- Use a plastic opening tool to separate the remainder of the back cover from the laptop.

 Be careful not to bend or crack the plastic back cover.

Step 4



- Disconnect the battery from the motherboard by gently pulling on wiring connecting to the motherboard.
- Carefully lift the battery out of the laptop.

To reassemble your device, follow these instructions in reverse order.

