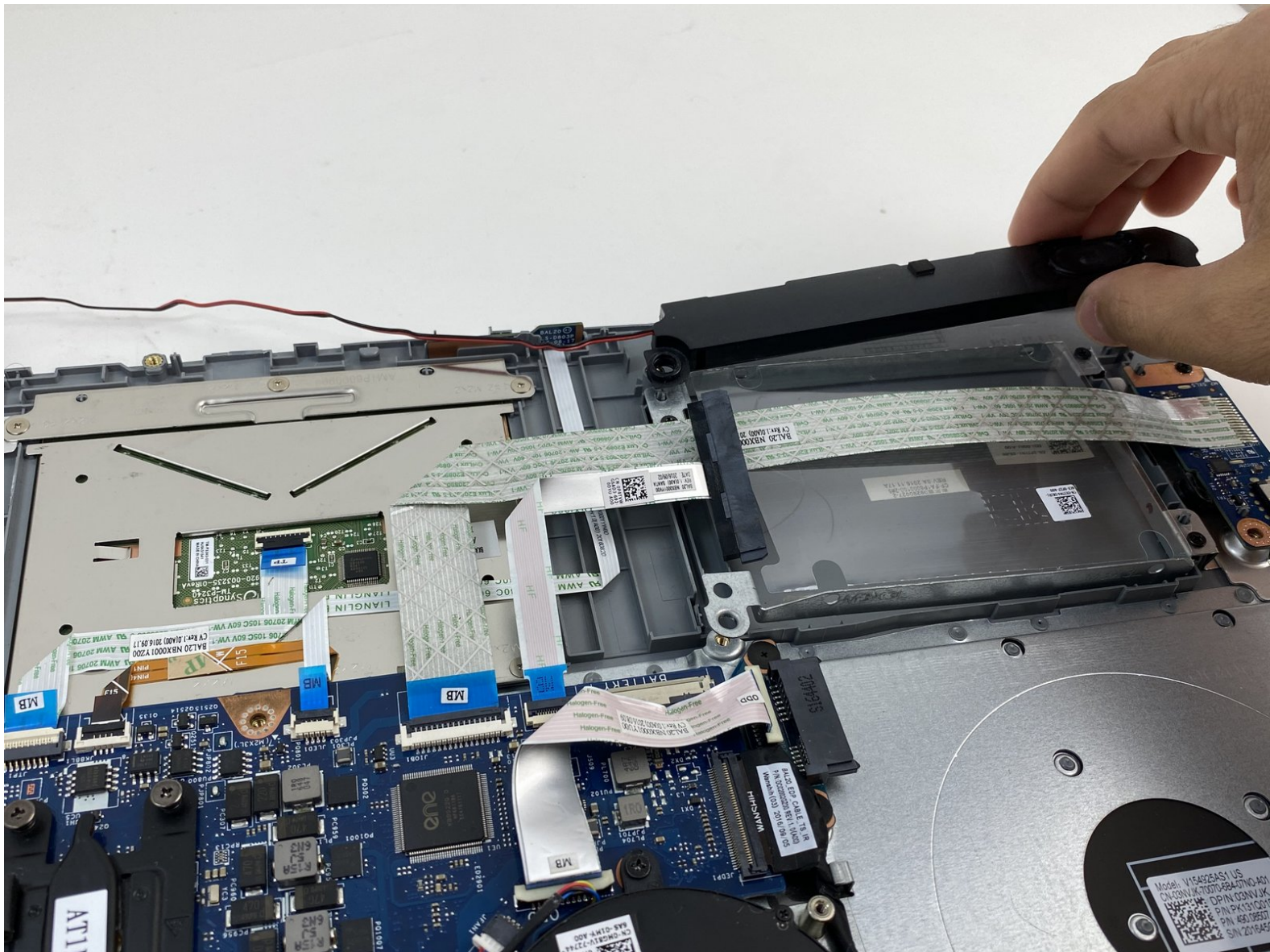




Dell Inspiron 15-5567 Speakers Replacement

This guide will help replace the speakers for the Dell Inspiron 15-5567.

Written By: Sattam Bakolka



INTRODUCTION

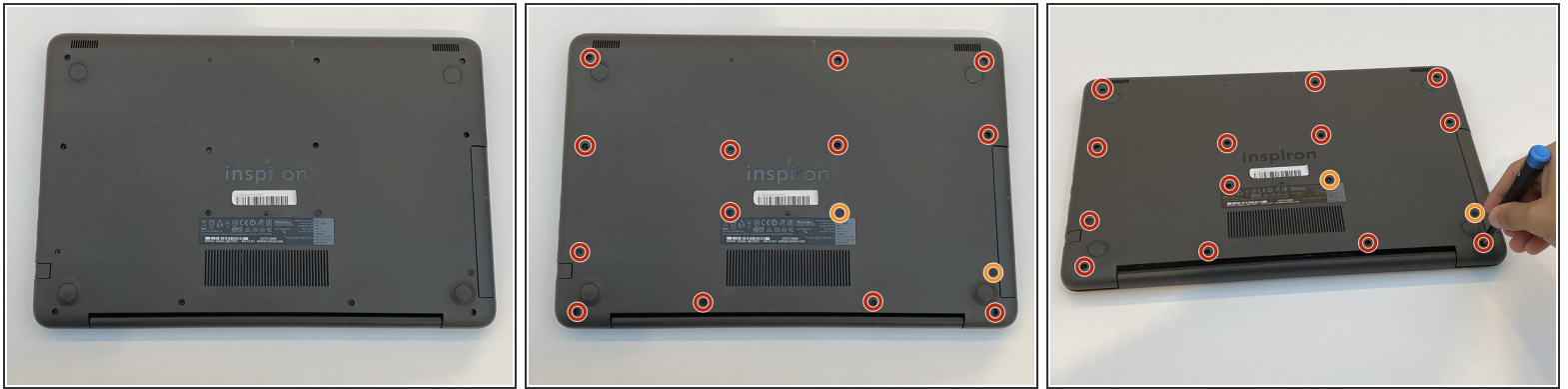
Laptop speakers are usually very susceptible to damage because they're sensitive to water and any other small particles that manage to get inside it. This guide will help you replace the speakers of the Dell Inspiron 15-5567. It is a relatively easy replacement. You'll need to take the back cover first as a prerequisite, and the two speakers are located on the top right and left. Please be careful not to press hard on the speaker cones as it's susceptible to damage and rupture.



TOOLS:

- [Phillips #0 Screwdriver](#) (1)
 - [iFixit Opening Tools](#) (1)
-

Step 1 — Back Cover



- Orient the laptop with the back cover facing upward and the INSPIRON engraving reads legible (not flipped).
- Remove 13 M2.5x8mm screws using a Philips #0 screwdriver.
- Remove two M2x4mm screws using the same screwdriver.

Step 2



- Insert the blue plastic opening tool into the crease of the CD driver, and pop it open.
- Slide the rest of it out with your hand.

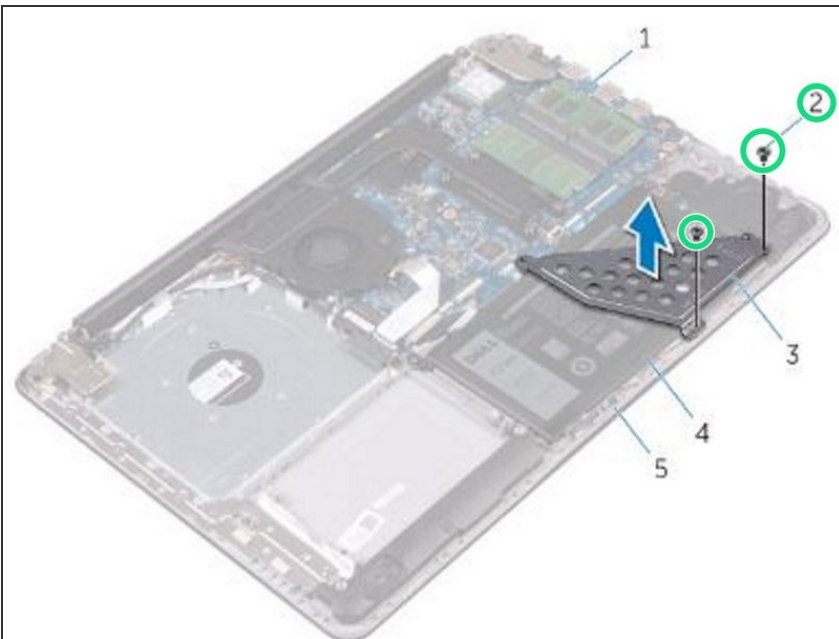
Step 3



- Remove three M2x2mm screws underneath the CD driver with the same Philips #0 screwdriver.
- Place the blue plastic opening tool in the crease of the cover and push it upward to open the back cover.
- Grab the corners of the cover firmly and lift it up.

⚠ Some parts are weaker than others; open it gently from corners.

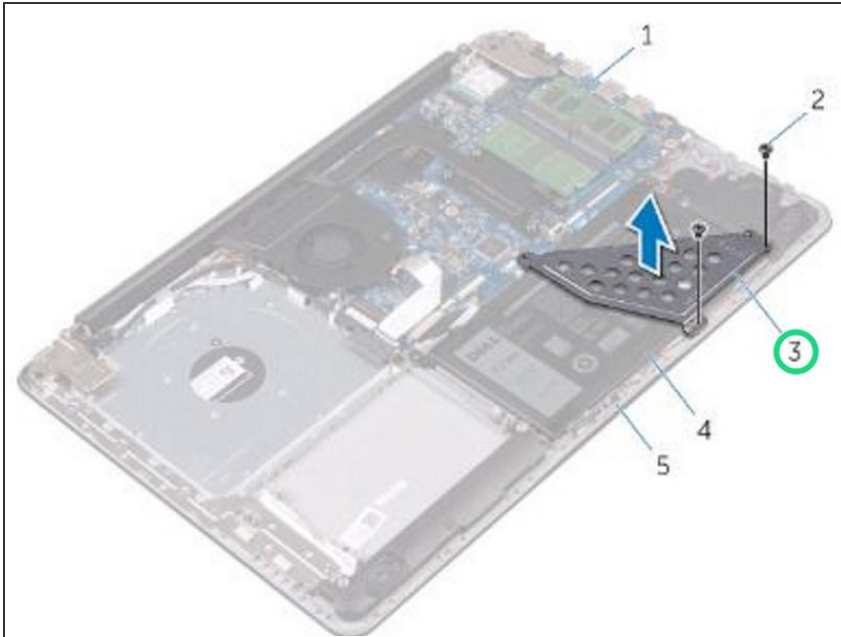
Step 4 — Remove the Screws



⚠ **WARNING:** Before working inside your computer, read the safety information that shipped with your computer and follow the steps in [Before Working Inside Your Computer](#). After working inside your computer, follow the instructions in [After Working Inside Your Computer](#).

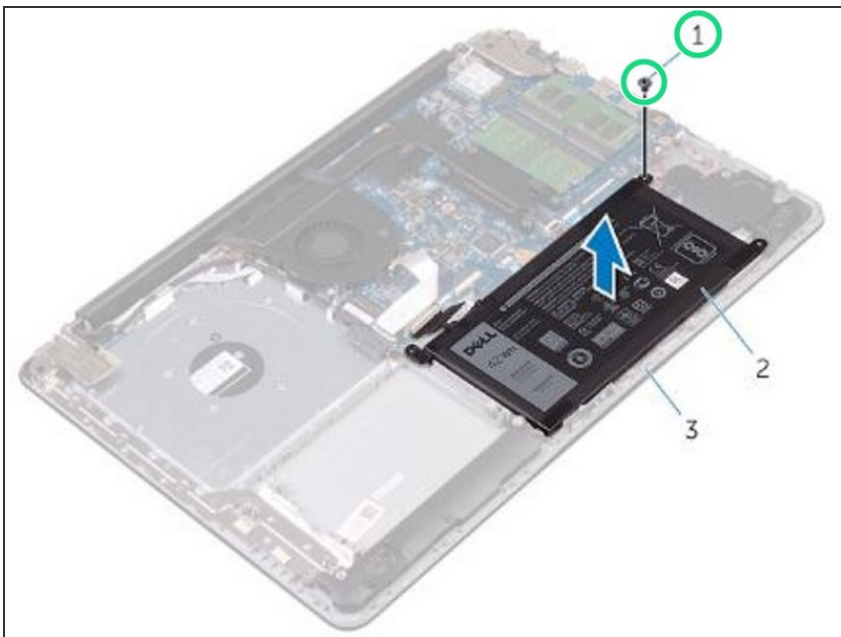
- Remove the screws that secure the battery bracket to the system board and palm rest and keyboard assembly.

Step 5 — Removing the Battery Bracket



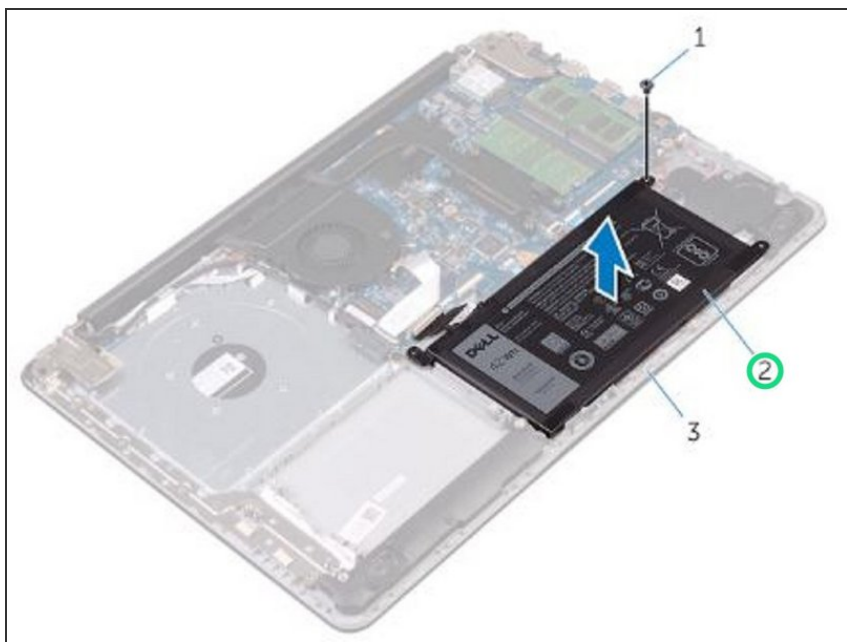
- Lift and remove the battery bracket.

Step 6 — Remove the Screw



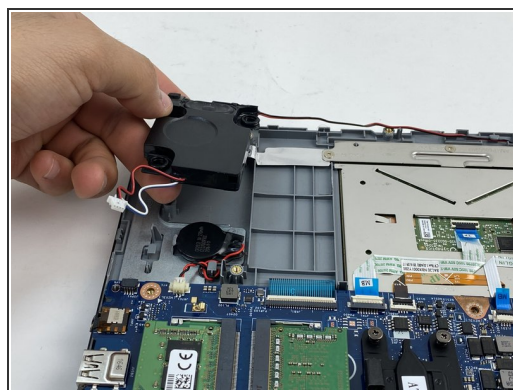
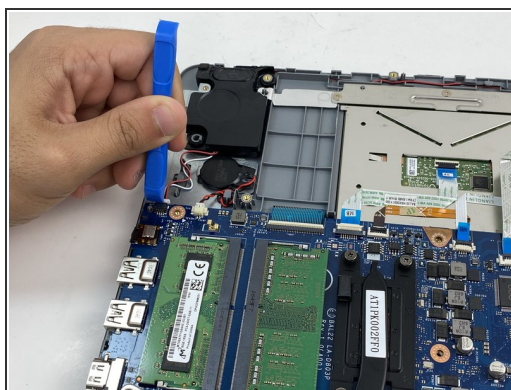
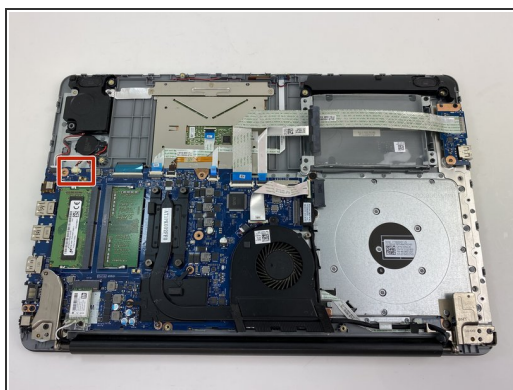
- Remove the screw that secures the battery to the palm rest and keyboard assembly.
- ⓘ Note the location of the screw that secures the battery to the palm rest and keyboard assembly.

Step 7 — Lifting the Battery



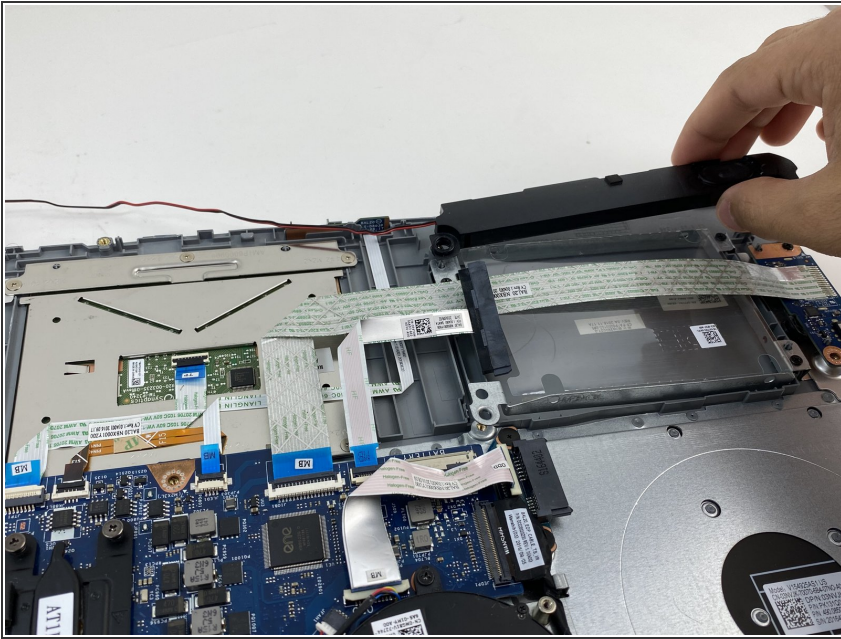
- Lift the battery off the palm rest and keyboard assembly.

Step 8 — Speakers



- Remove the cable by using the blue plastic opening tool.
- Lift the first speaker gently and remove it.

Step 9



- Lift the other speaker gently and remove it.

To reassemble your device, follow these instructions in reverse order.