



Zune 80 GB Teardown

This manual will guide you through the steps...

Written By: koolkid



INTRODUCTION

This manual will guide you through the steps involved in successfully removing the components of your Zune. This includes the hard drive, battery, screen, logic board, etc.

TOOLS:

Metal Spudger (1)

T4 Torx Screwdriver (1)

Step 1 — Zune 80 GB Teardown



- Use a metal spudger or Zune opening tool to remove the small silver plastic cap located on top of the device.

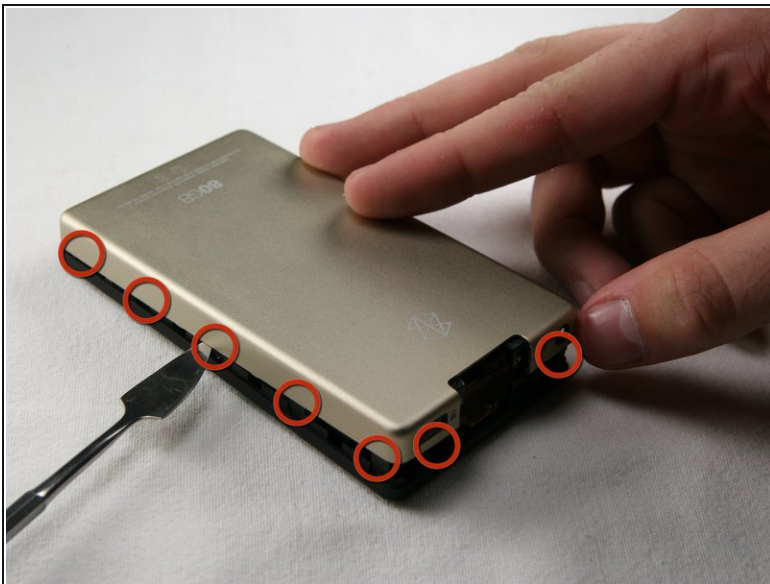
Step 2



- There are two T4 screws under the cap. Remove both screws with a T4 screwdriver.

⚠ WARNING: Be careful when removing the screws since they can strip very easily.

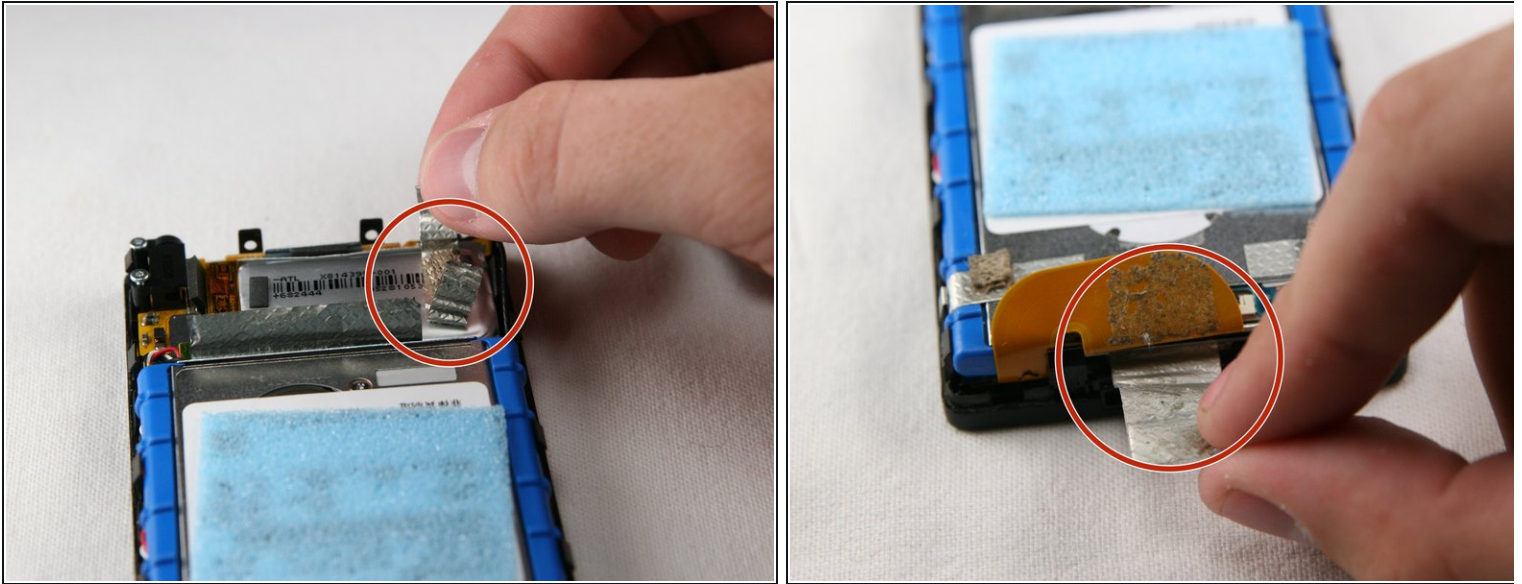
Step 3



- Using a metal spudger or Zune opening tool, remove the aluminum backing starting from the top. There are five clips on each side and two on the bottom.

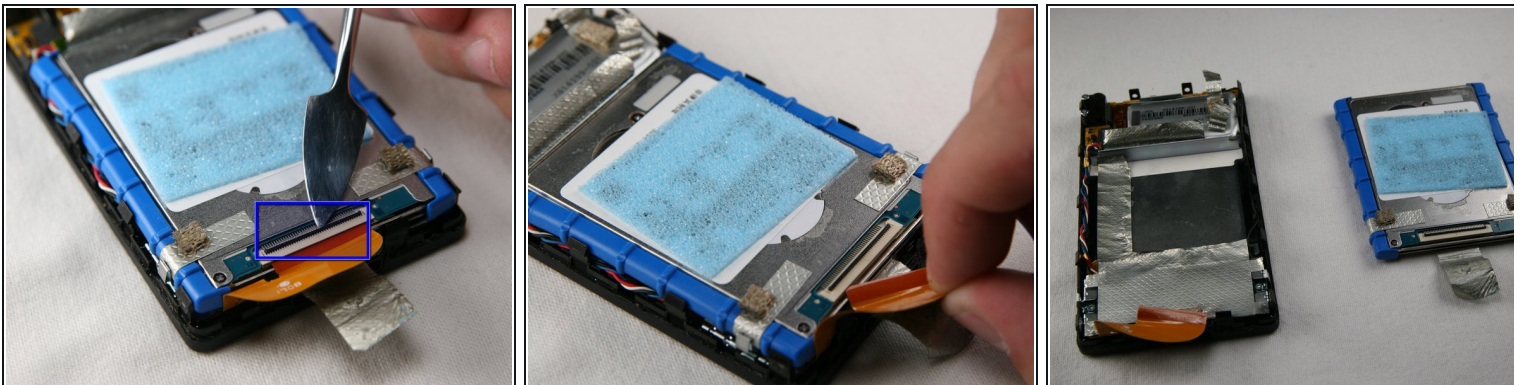
⚠ WARNING: Be careful not to press the tools in too far because there are exposed cables right inside the edge of the device.

Step 4



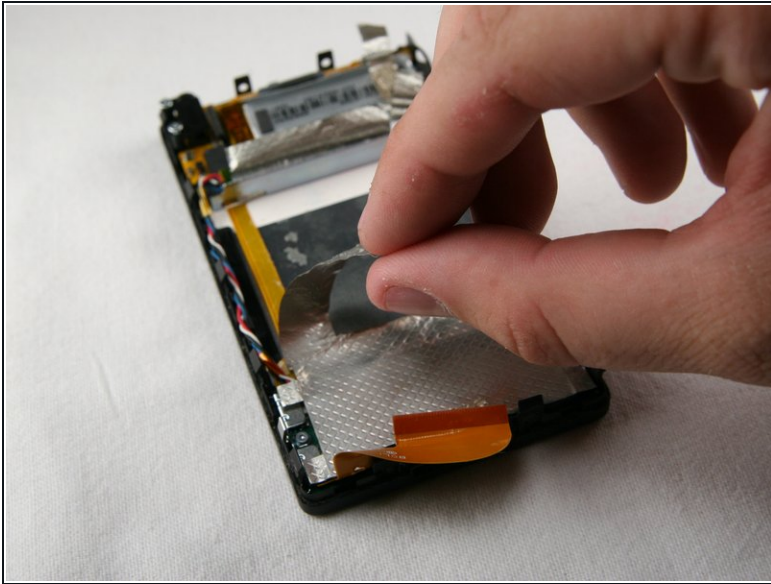
- Remove the silver tape from the bottom center and the top right of the device. This allows access to the hard drive and the battery.

Step 5



- Unclick the black bar connecting the orange hard drive cable to the bottom of the hard drive.
 - Gently push towards the bottom of the device on the black bar until you hear a click sound. It is now disengaged from the hard drive.
- i** If the cable does not come off easily, the black bar has not been un-clicked.
- Now, gently pull the orange hard drive cable to remove it from the hard drive cable.
 - Lift the hard drive out of the device.

Step 6



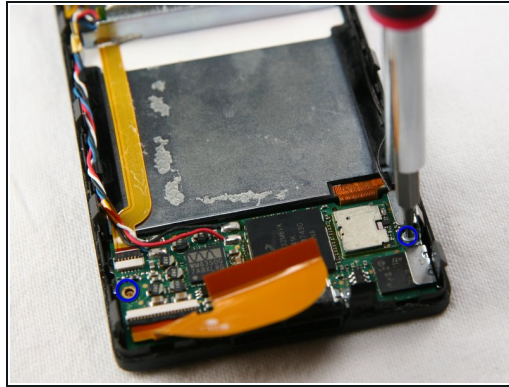
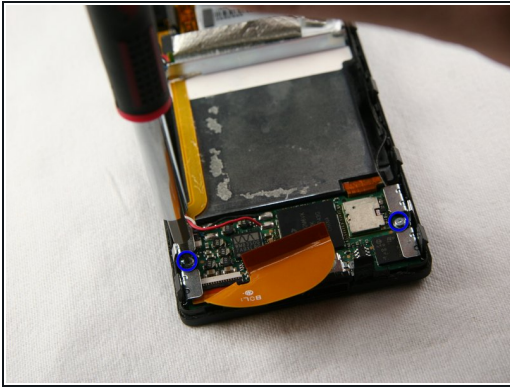
- Remove two more pieces of silver tape from the bottom of the device. One of these pieces is below the other.

Step 7



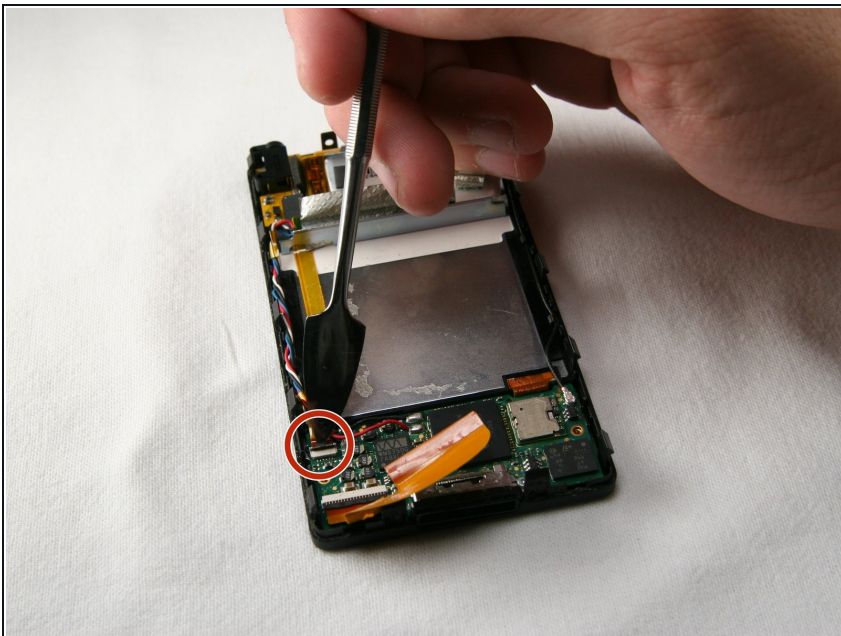
- Remove the two T4 screws holding the headphone jack receiver on the top left corner of the device.

Step 8



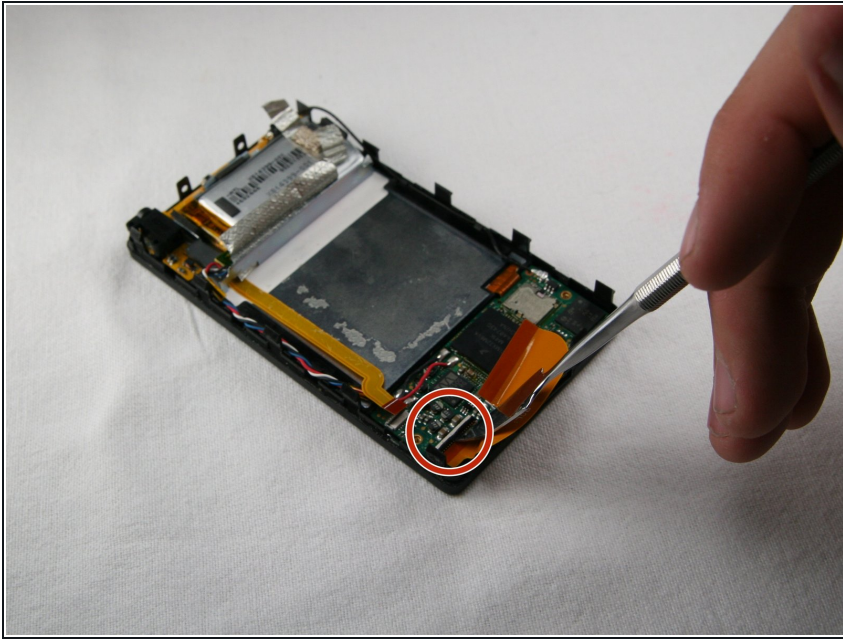
- Remove the two T4 screws holding the metal brackets on both sides of the bottom of the device.
- Remove the screws, brackets, and clips from the device. These are small pieces, so put them in a safe place.

Step 9



- The orange audio board cable is clipped in with a small black bar, like the hard drive cable.
 - Un-clip the bar by pushing upwards on the edge of the black bar towards the orange cable. You will hear it click when it disengages.
- ⓘ If the cable does not come off easily, the black bar has not been unclicked.

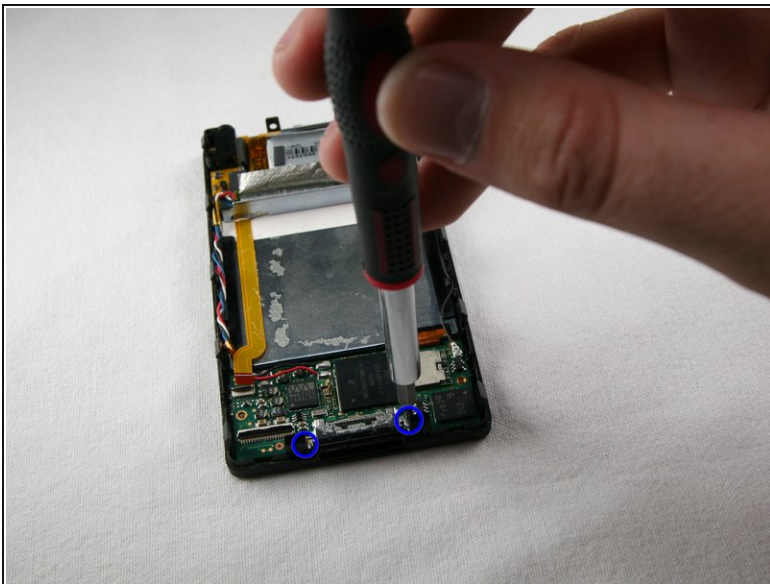
Step 10



- Flip the black bar to unclip the left side of the hard drive cable. You may now remove the hard drive cable.

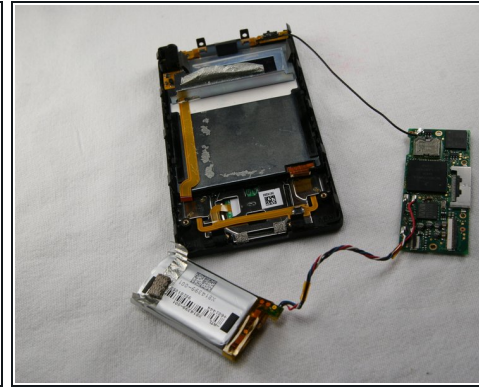
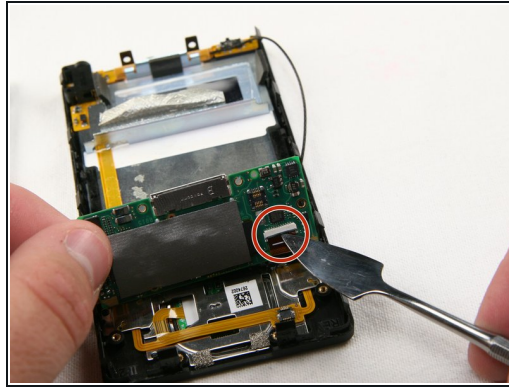
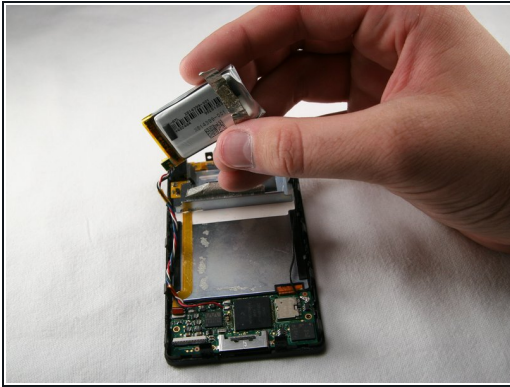
ⓘ If the cable does not come off easily, the black bar has not been unclicked.

Step 11



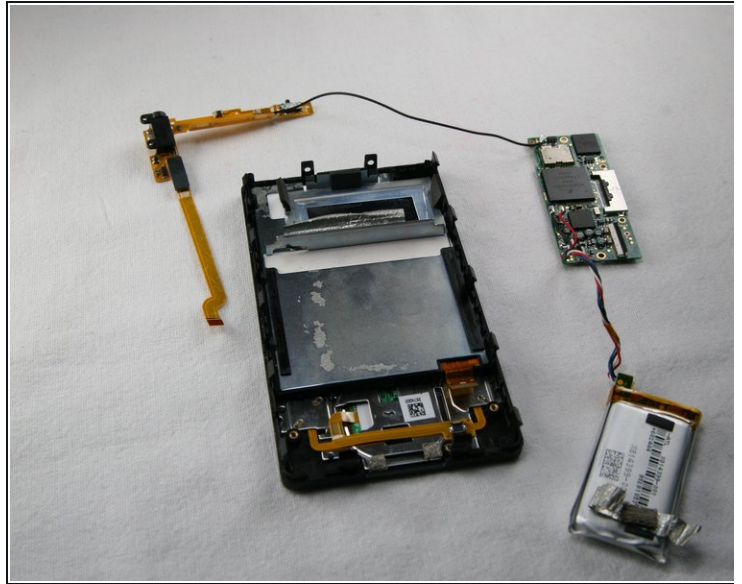
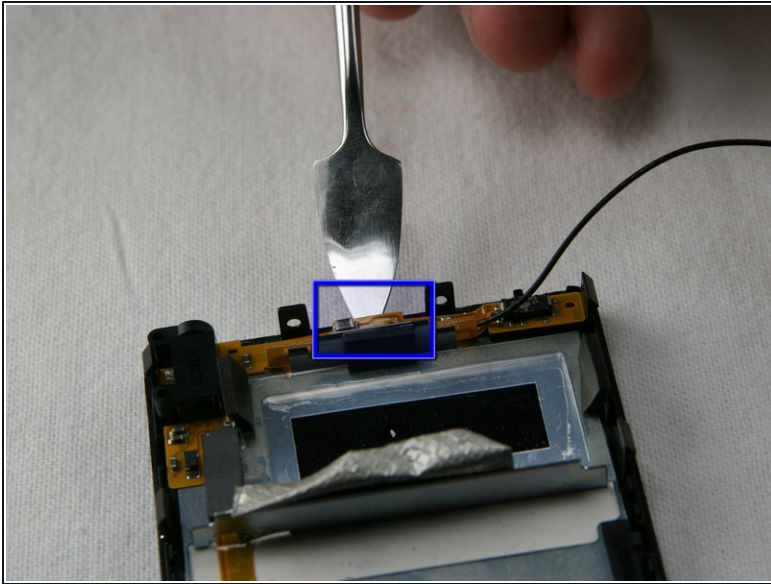
- Remove the two T4 screws that hold the charging port on the bottom of the device.
- Remove the charging port.

Step 12



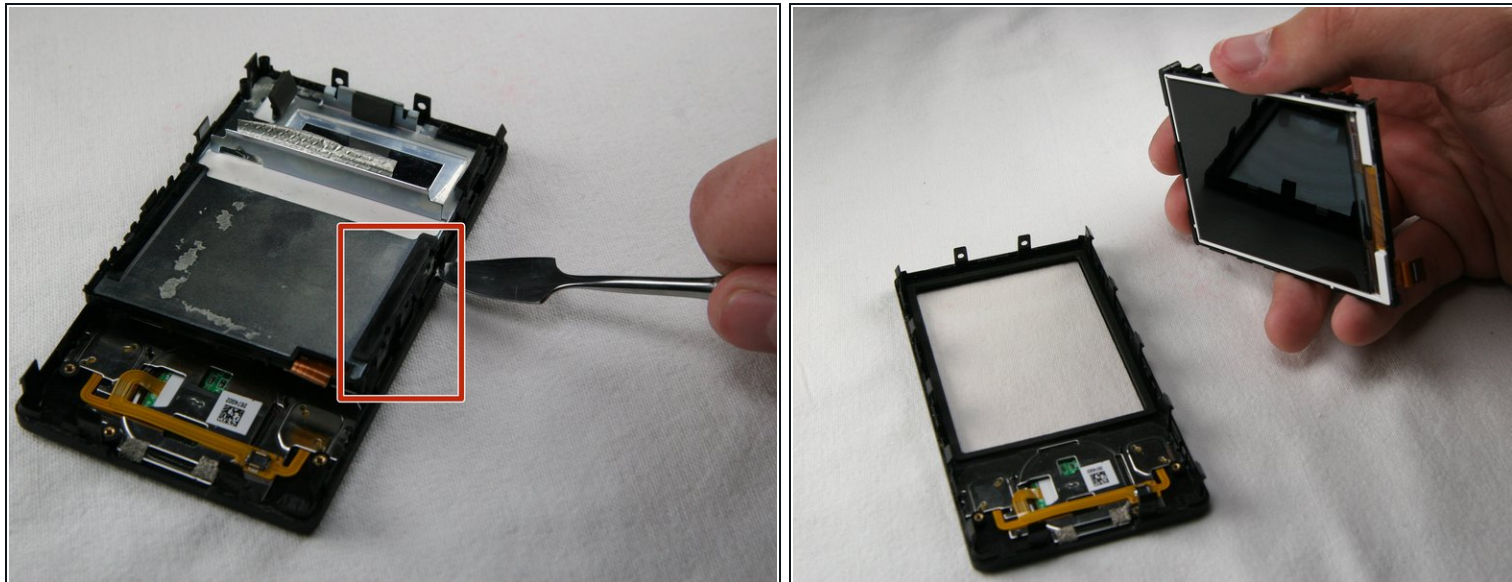
- Remove the battery from the device with the cables still connected.
- Carefully lift up the logic board located at the base of the Zune.
 - Unclip the orange ribbon cable in the same manner as in the previous steps.
- Remove the logic board from the Zune, leaving the black wire connected.

Step 13



- Carefully remove the wireless assembly that runs along the top and upper left edges of the Zune.
- ⚠ The assembly is lightly glued to the device. Use caution, as some force will be needed, but too much force will damage the board.
- Remove the assembly and the battery together as one unit.

Step 14



- Gently pry the screen unit from the black, plastic front frame.

To reassemble your device, follow these instructions in reverse order.