



HP Stream 11-y010nr Battery Replacement

Are you are having problems with your HP Stream...

Written By: Adam Sitzmann



INTRODUCTION

Are you are having problems with your HP Stream 11-y010nr battery? Is the battery life bad enough that it needs to be replaced? The first thing that you should do is see our troubleshooting page and check it before the battery gets replaced. [HP Stream 11-y010nr Troubleshooting](#)

This guide will take you through the necessary steps to properly remove and replace the battery. Use caution when taking the battery out as it can catch on fire if the battery pack is punctured. Additionally, a thin wire is attached to the bottom of the battery so use caution when taking it out.

Prior to beginning, ensure the laptop is completely powered off such that it will not interfere with the steps in this guide.



TOOLS:

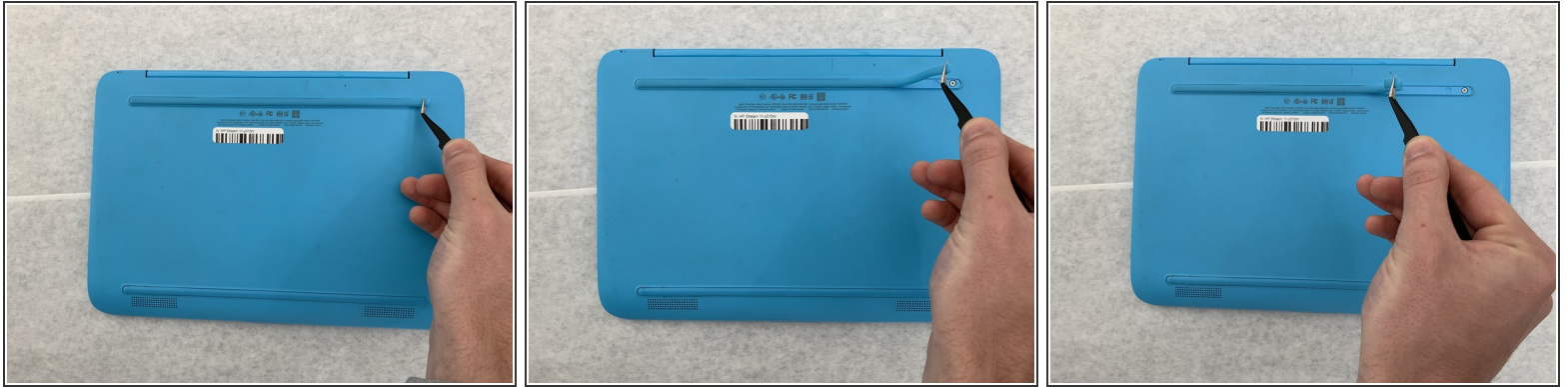
- [Phillips #0 Screwdriver](#) (1)
- [iFixit Opening Picks \(Set of 6\)](#) (1)
- [Tweezers](#) (1)
- [Phillips #1 Screwdriver](#) (1)
- [Nylon Tipped Tweezers](#) (1)



PARTS:

- [HP PO02XL Stream 11 Pro G4 Laptop Battery](#) (1)

Step 1 — Keyboard



- Gently peel back the two rubber strips that cover the screws on backside of the computer with the needle nose tweezers.

⚠ Ensure the laptop is turned off.

Step 2



- Unscrew the seven 0.4mm screws on the backside of the laptop with the Phillips #0 Screwdriver.

Step 3



- Take the opening picks and push them into the seam between the keyboard and the laptop casing.
- Go all the way around the laptop.

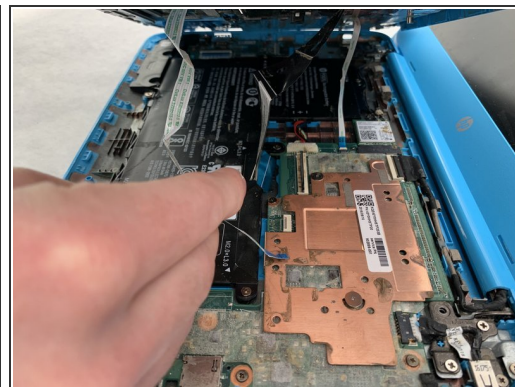
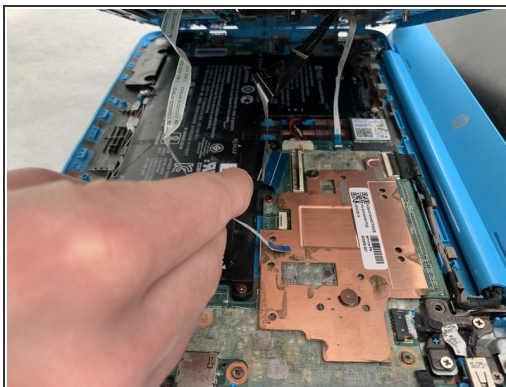
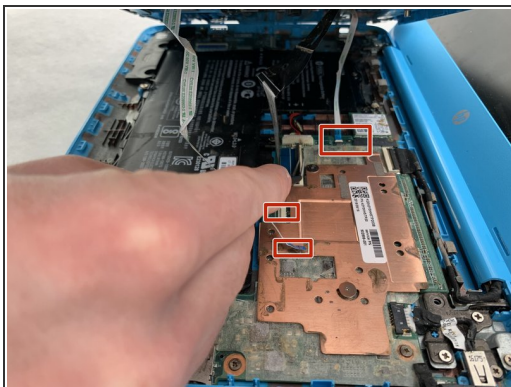
Step 4



- Once the cover is loose enough, lift the keyboard up to expose the wiring beneath.

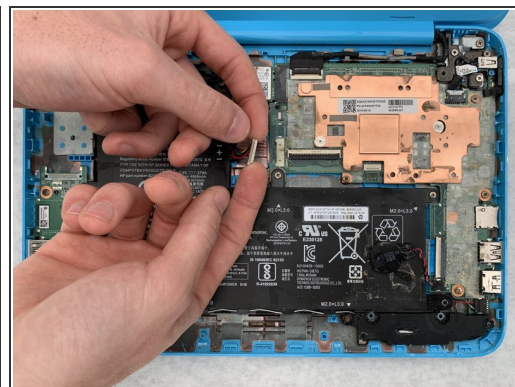
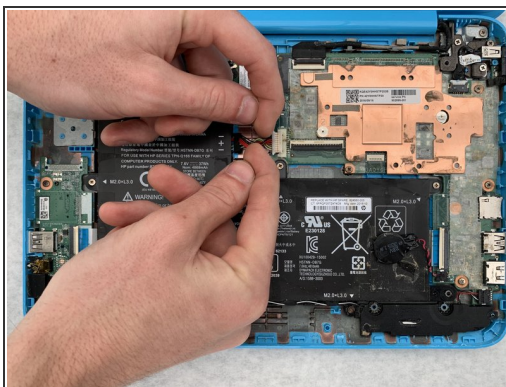
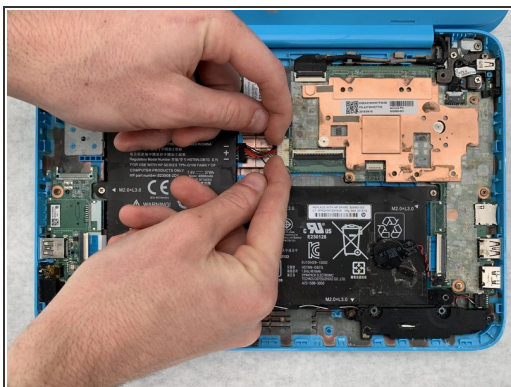
⚠ Be careful not to pull too hard or fast as there are ribbon cables attached to the keyboard and trackpad.

Step 5



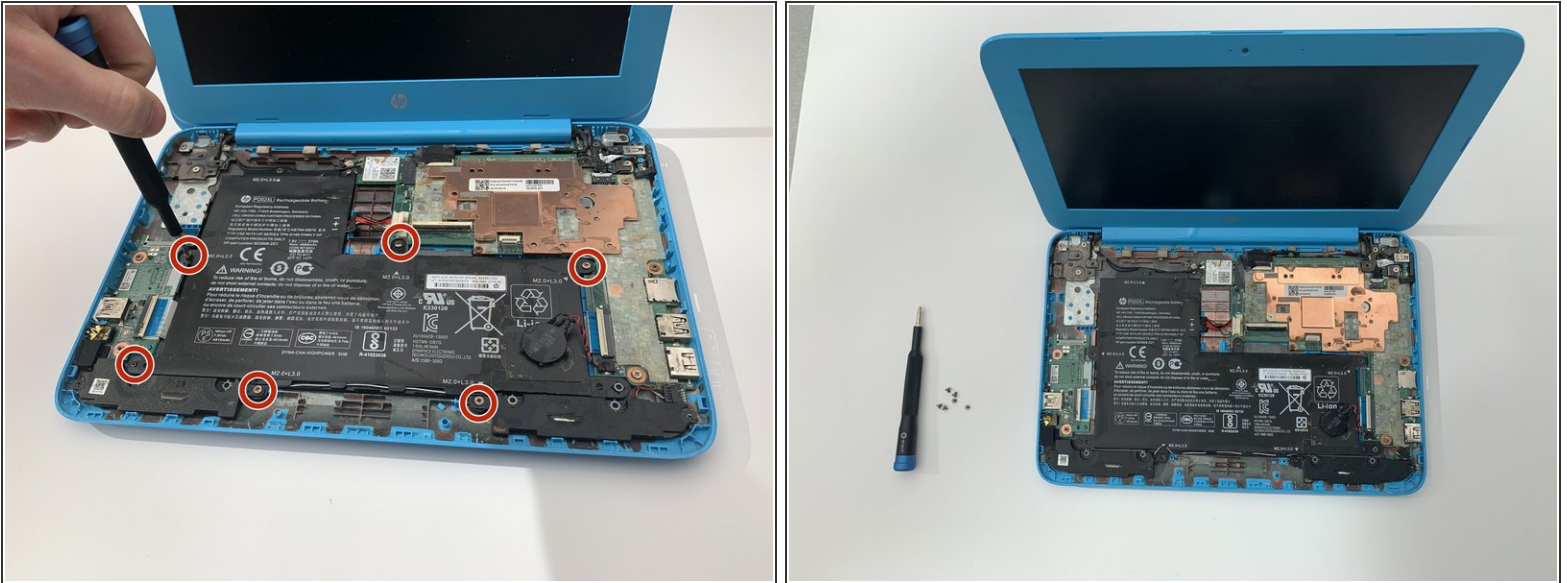
- Disconnect the three cables by lifting up on the locking tab of the ZIF connector and pulling the cables out with the needle nose tweezers.
- Remove the keyboard.

Step 6 — Battery



- Use your fingers or a spudger to pull the battery cable out from its connector.

Step 7



- Unscrew the six 0.4mm screws surrounding the battery with a Phillips #1 screwdriver.

Step 8



- Carefully lift up on the battery.
- If the black and white wire on the bottom is intertwined with the bracket, gently pull the wire off the battery.

To reassemble your device, follow these instructions in reverse order.