



# HP Pavilion x360 11m-ad013dx Keyboard Replacement

This guide shows how to successfully remove and replace the keyboard for the HP Pavilion x360 11m-ad013dx.

Written By: Hank Ferguson



This document was generated on 2020-11-28 07:53:46 AM (MST).

## INTRODUCTION

If the keyboard on your HP Pavilion x360 11m-ad013dx has stopped working or is in need of replacement, use this guide to replace the keyboard. For more information about malfunctioning keyboards, see our troubleshooting page: [HP Pavilion x360 11m-ad013dx Troubleshooting](#). The keyboard panel contains the keys themselves, as well as the touchpad. The panel also provides access to the internal section of the laptop, containing the battery, hard drive, motherboard, etc.



### TOOLS:

- [Phillips #0 Screwdriver](#) (1)
- [Phillips #1 Screwdriver](#) (1)
- [Spudger](#) (1)

## Step 1 — Keyboard



- Lay the HP Pavilion top-down with the front edge facing towards you.

## Step 2



- Remove the three 4.8mm Phillips #0 screws from the front side.

### Step 3



- Using a plastic spudger, remove the grey silicon strip closest to the back-side.

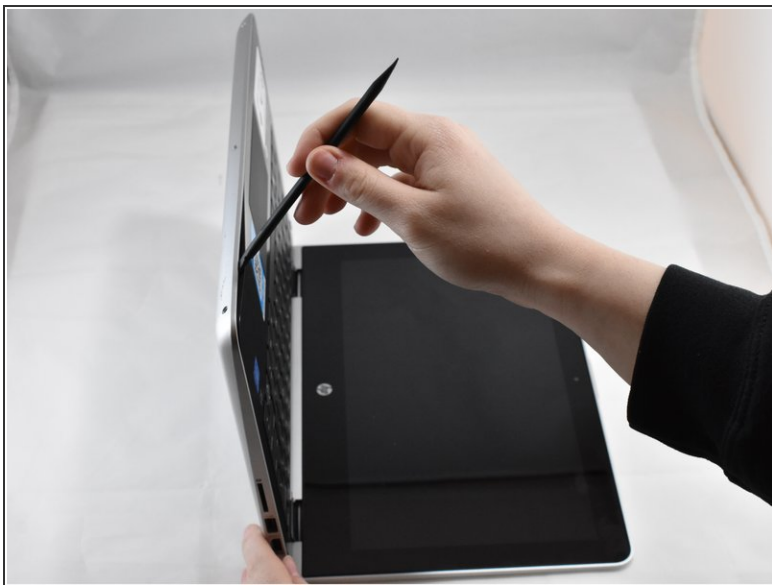
### Step 4



- Remove the three 5.7mm Phillips #1 screws.

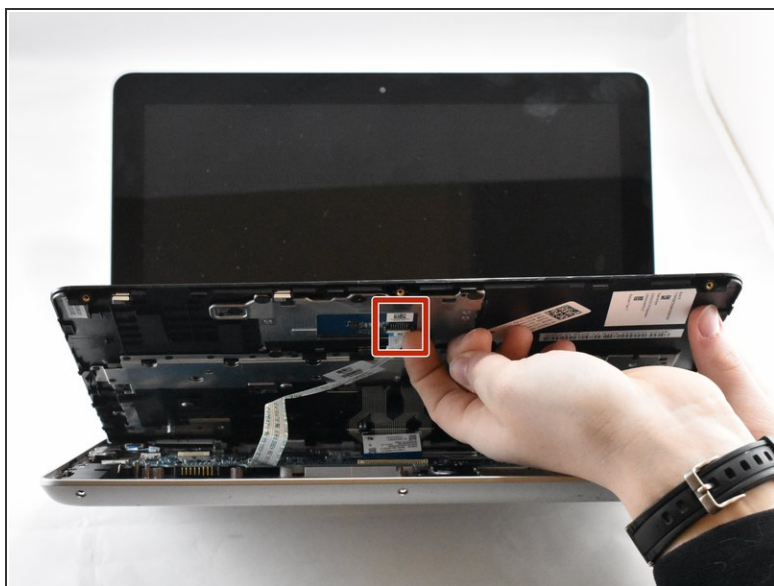


## Step 5



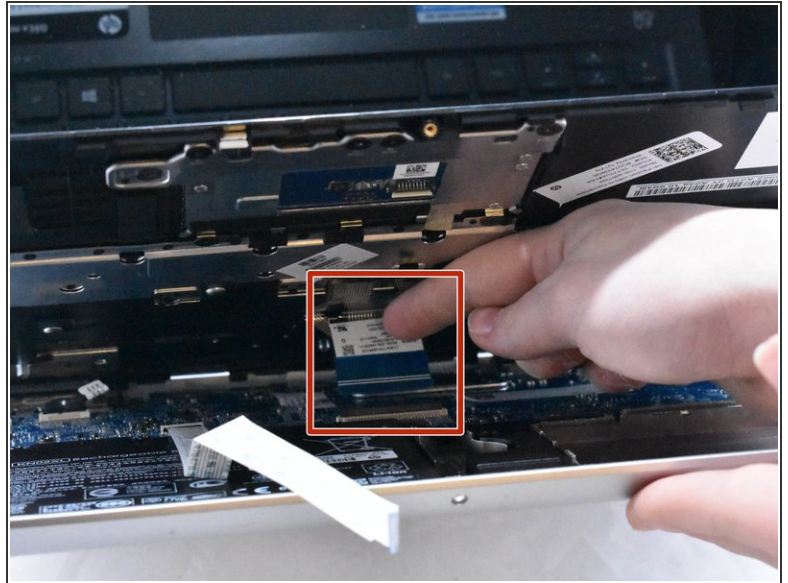
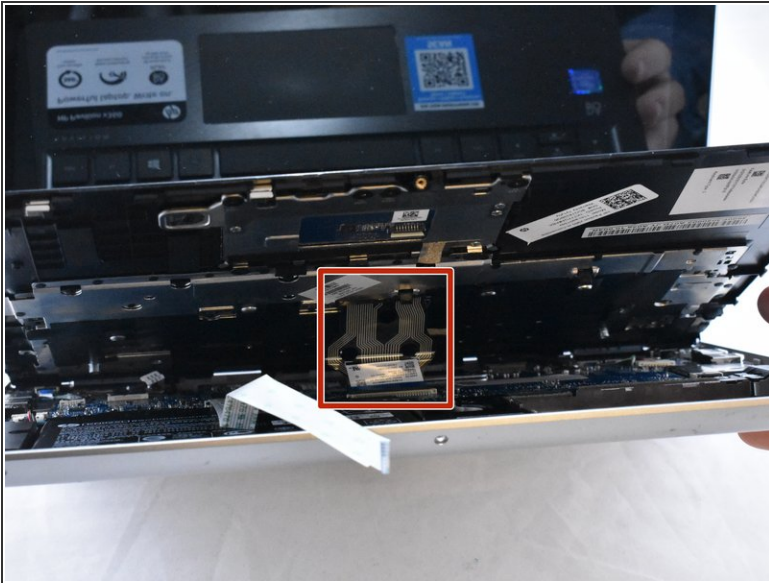
- Open the HP Pavilion so that the screen is showing. Then tilt it down so that the screen is on its back, facing up.
- Using a spudger, pry off the black keyboard panel.
- ⓘ This step requires force to unclasp the latches keeping the keyboard in place.

## Step 6



- Using your fingernail, disconnect the zero insertion force (ZIF) keyboard connector cable by flipping up the small locking flap.
- ⓘ You may disconnect the other end of the cable, for ease of access to other parts. Keep in mind that the end labeled MB connects to the motherboard.

## Step 7



- Using your fingernail, disconnect the zero insertion force (ZIF) connector for the touch pad cable by flipping up the small locking flap.

## Step 8



- Remove the keyboard.

To reassemble your device, follow these instructions in reverse order.

This document was generated on 2020-11-28 07:53:46 AM (MST).

