



HP Stream 11-y010nr WiFi Card Replacement

This guide will direct you how to replace the HP Stream 11-y010nr WiFi Card

Written By: Adam Sitzmann



INTRODUCTION

Is your HP Stream 11-y010nr WiFi malfunctioning? Do you need to replace your WiFi card? First, ensure that the issue is not one of the common problems that can be resolved quickly by checking the troubleshooting page here: [[HP Stream 11-y010nr Troubleshooting](#) | HP Stream 11-y010nr Troubleshooting]

This guide will take you through the process of getting to the WiFi card, removing it, replacing it and getting it back to how it was. When you are removing the WiFi card remember the placement of the wires as it is important for the operation of the WiFi card.

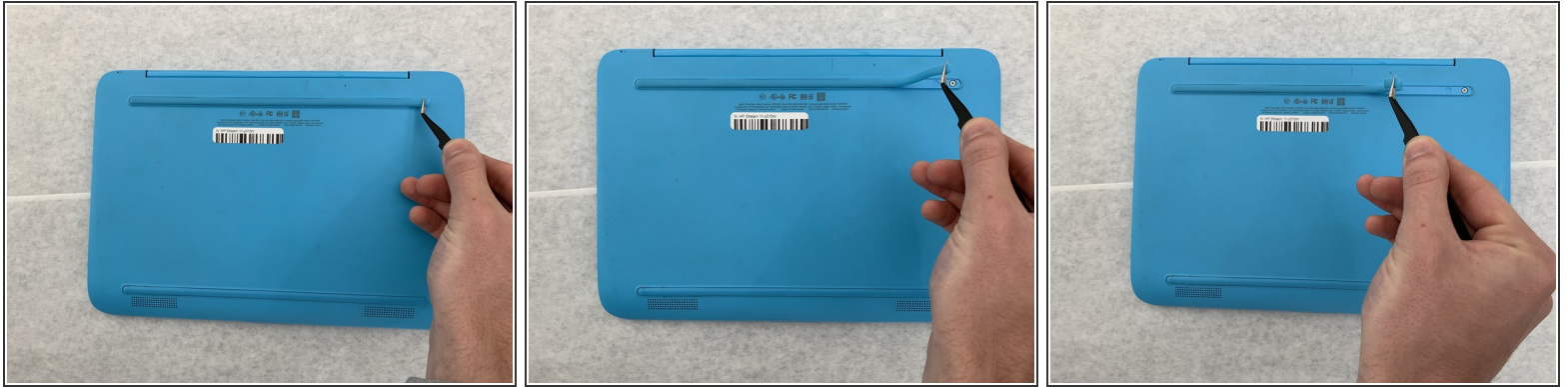
Prior to starting, ensure the laptop is powered off and is not going to interfere with the process.



TOOLS:

- [iFixit Opening Picks set of 6](#) (1)
 - [Tweezers](#) (1)
 - [Phillips Head Screwdriver: Size PH1](#) (1)
 - [Needle Nose Tweezers](#) (1)
-

Step 1 — Keyboard



- Gently peel back the two rubber strips that cover the screws on backside of the computer with the needle nose tweezers.

⚠ Ensure the laptop is turned off.

Step 2



- Unscrew the seven 0.4mm screws on the backside of the laptop with the Phillips #0 Screwdriver.

Step 3



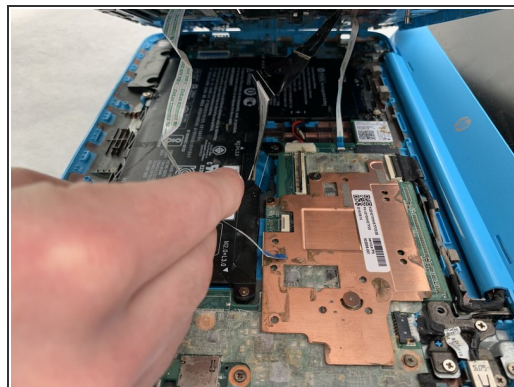
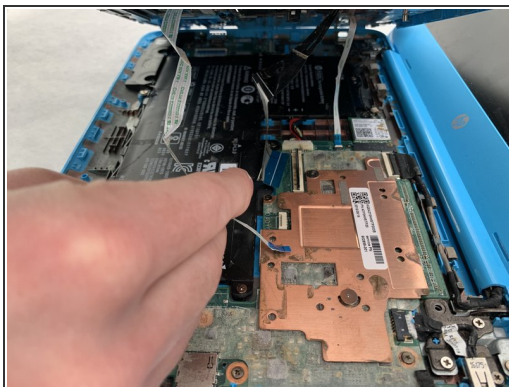
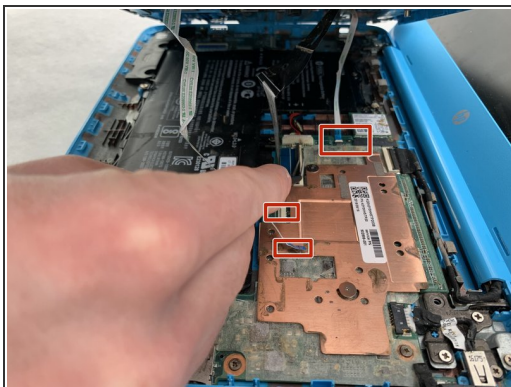
- Take the opening picks and push them into the seam between the keyboard and the laptop casing.
- Go all the way around the laptop.

Step 4



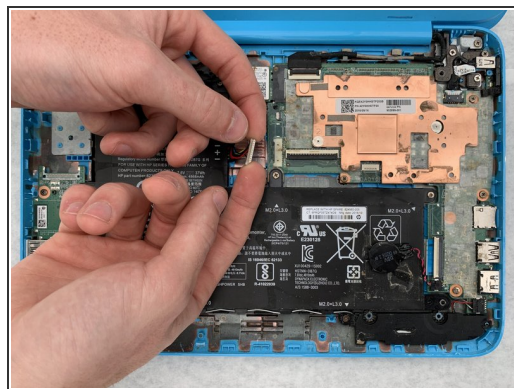
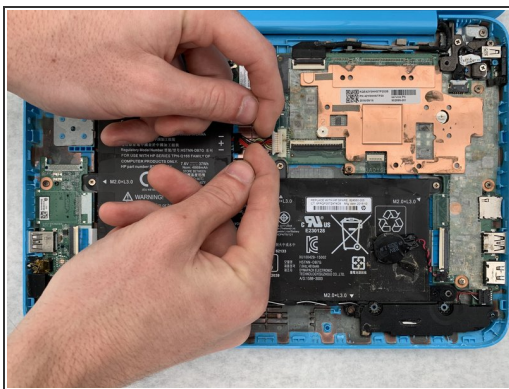
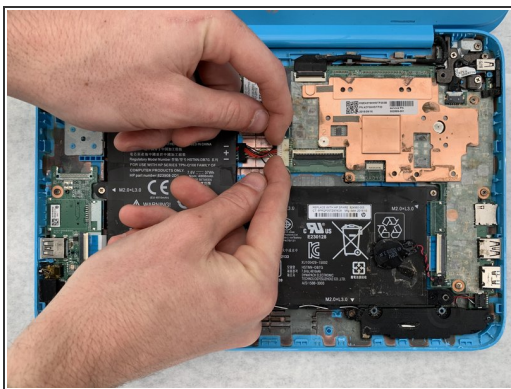
- Once the cover is loose enough, lift the keyboard up to expose the wiring beneath.
- ⚠ Be careful not to pull too hard or fast as there are ribbon cables attached to the keyboard and trackpad.

Step 5



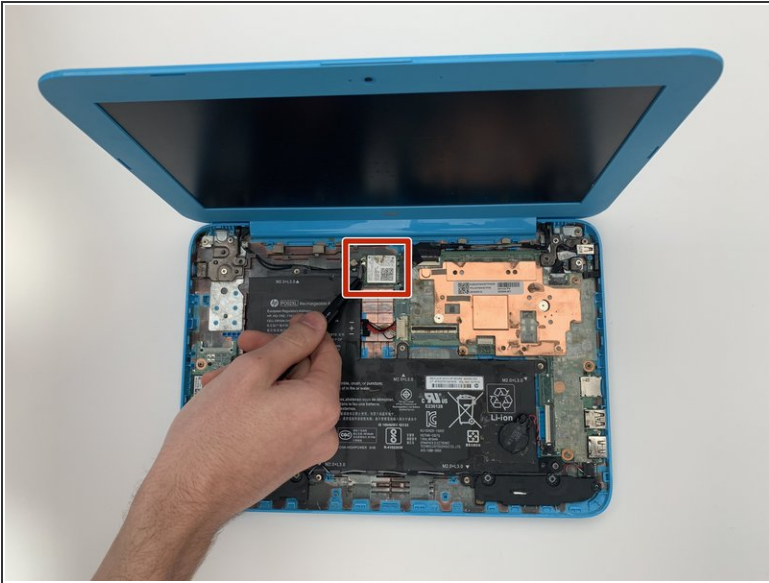
- Disconnect the three cables by lifting up on the locking tab of the ZIF connector and pulling the cables out with the needle nose tweezers.
- Remove the keyboard.

Step 6 — WiFi Card



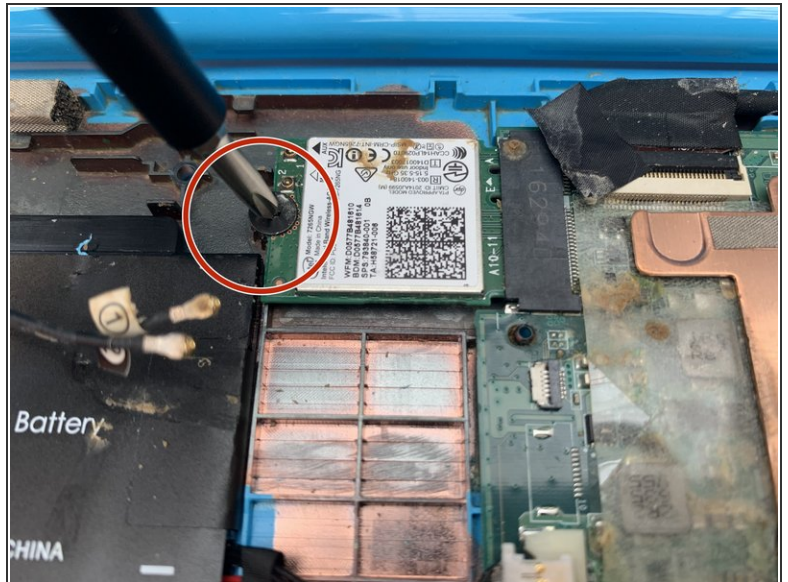
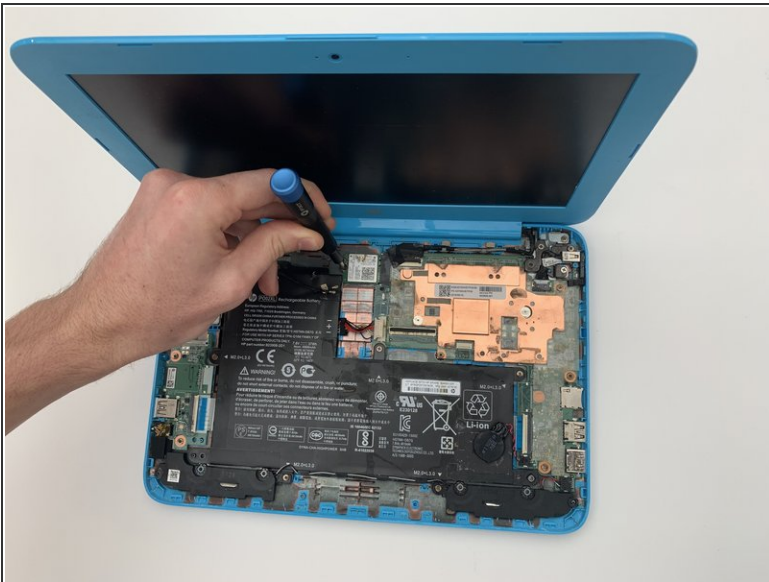
- Use your fingers or a spudger to pull the battery cable out from its connector.

Step 7



- Gently pry up the two coaxial cables from the WiFi card with the needle nose tweezers.

Step 8



- Unscrew the 0.3mm screw on the WiFi card with the Phillips #1 screwdriver.

Step 9



- Gently pull the WiFi card out leftwards.

To reassemble your device, follow these instructions in reverse order. Make sure that you put the wires on the Wifi card to the correct location. Each of the cables are numbered with the wifi card having the numbers next to each plug.