



Sony a7 Rear Disassembly Replacement

This is a pre-requisite list of steps that will...

Written By: Jeffrey Coleman



INTRODUCTION

This is a pre-requisite list of steps that will act as a placeholder for all other applicable guides pertaining to the Sony a7.

TOOLS:

Kreuzschlitzschraubendreher #00 (1)

Pinzette (1)

Step 1 — Rear Disassembly



- Remove the eyepiece cover by removing the four M1.5x4mm screws with a PH00 Phillips screwdriver.
- Remove the M1.5x4mm screw that retains the adjustment wheel with a PH00 Phillips screwdriver.

Step 2



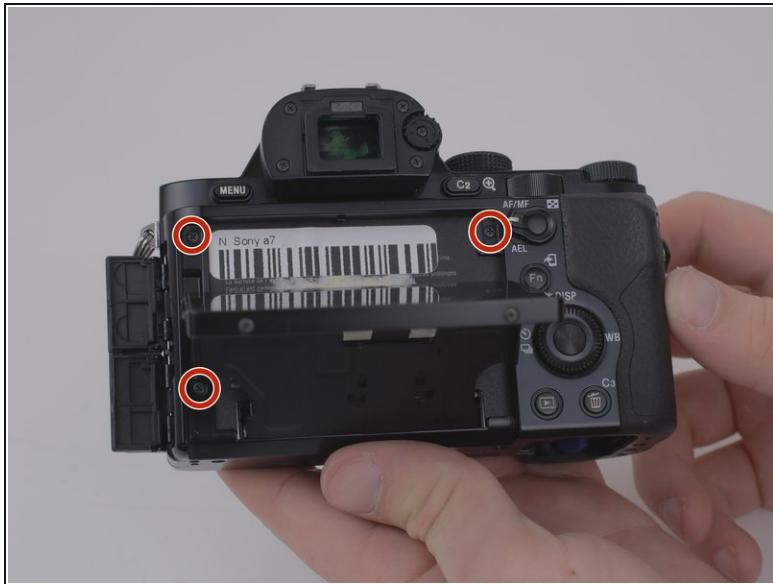
- Remove the six M1.5x4mm screws with a PH00 Phillips screwdriver.

Step 3



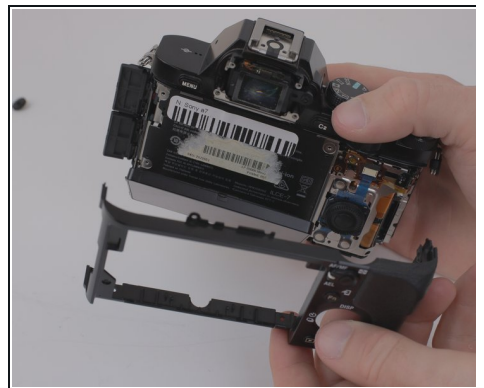
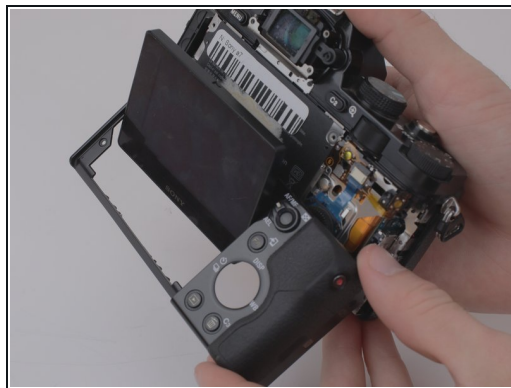
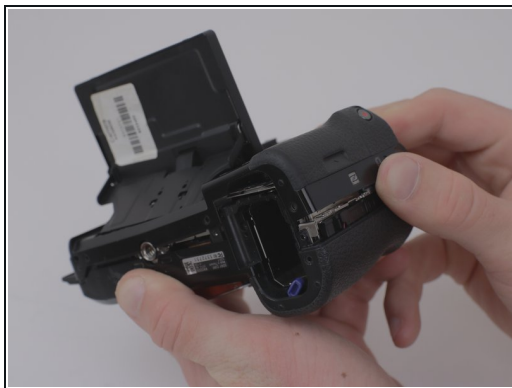
- Remove one M1.5x4mm screw with a PH00 Phillips screwdriver.

Step 4



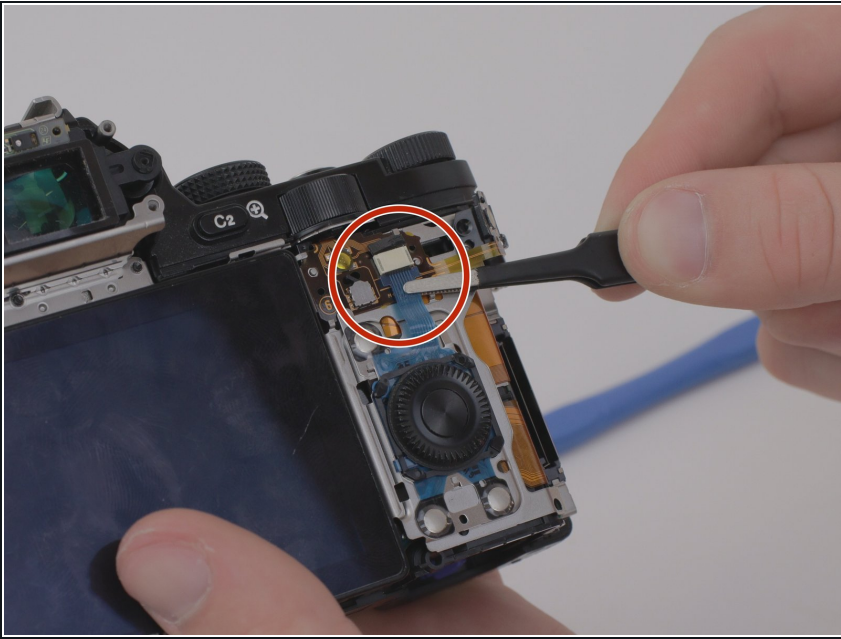
- Remove the four M 1.5x2mm screws.

Step 5



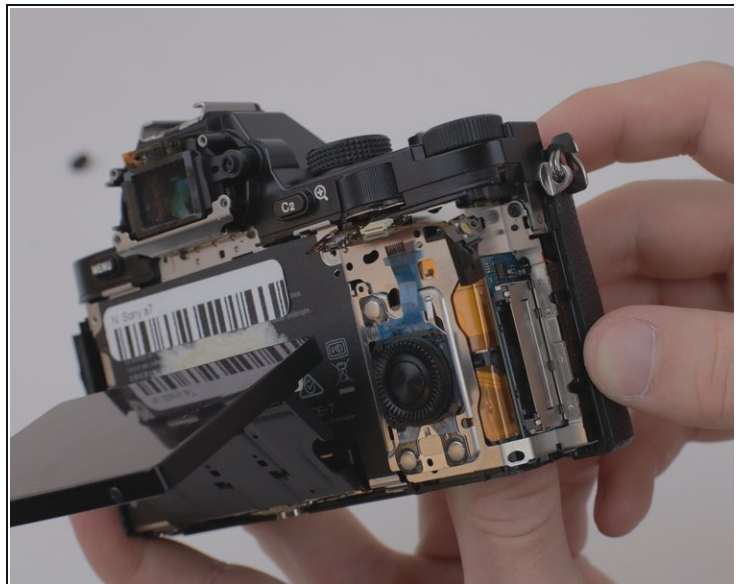
- Once the screws have been removed, unsnap and lift the rear plastic cover off of the camera.

Step 6



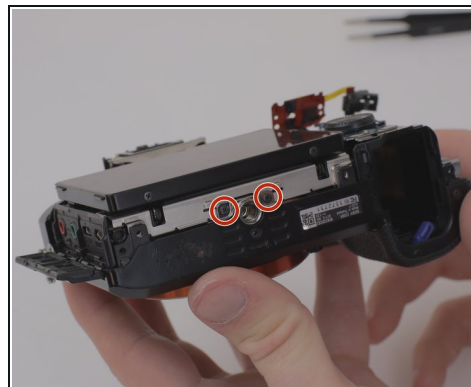
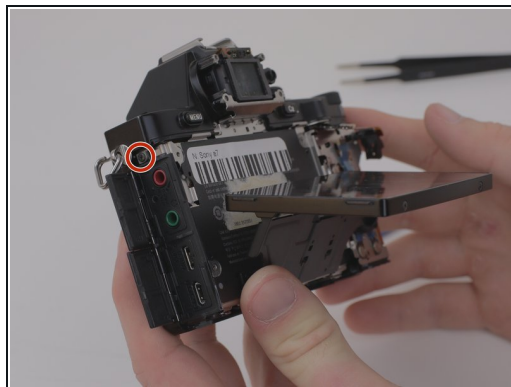
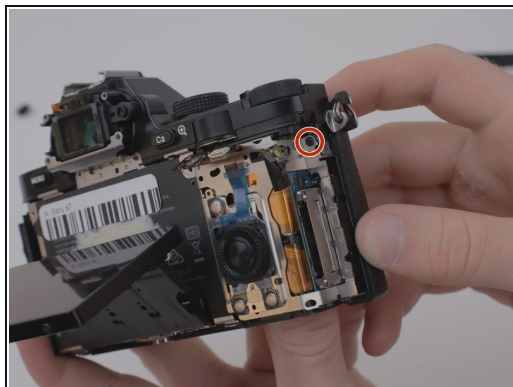
- Using the blunt tweezers, remove the blue ribbon cable.
- ❗ For additional guidance and tips on how to properly attach and detach connector cables, please reference *iFixit's* guide to connector cables [here](#).

Step 7



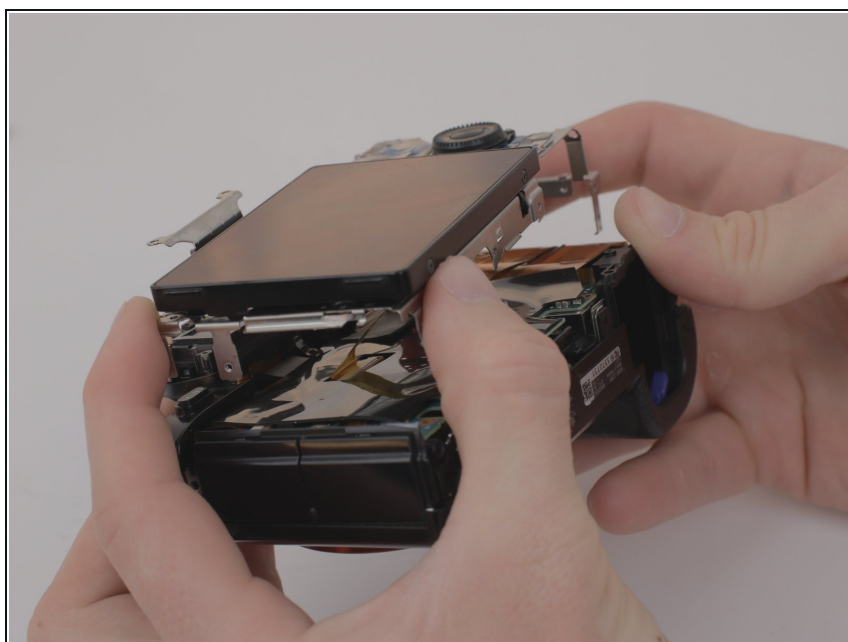
- Place the tweezers on the side of the circuit board and lift it from underneath so as to free it from the three retaining tabs.

Step 8



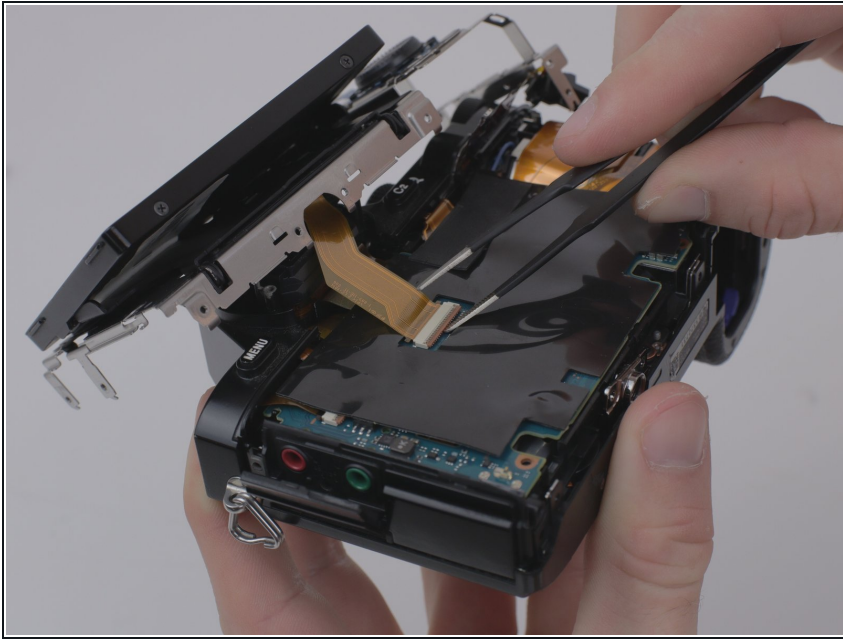
- Remove four M1.5x4mm screws using a PH00 Phillips screwdriver.

Step 9



- Lift the metal plate and LCD screen away from the camera body.

Step 10



- Detach the amber ribbon cable from the motherboard.

ⓘ For additional guidance and tips on how to properly attach and detach connector cables, please reference *iFixit's* guide to connector cables [here](#).

To reassemble your device, follow these instructions in reverse order.