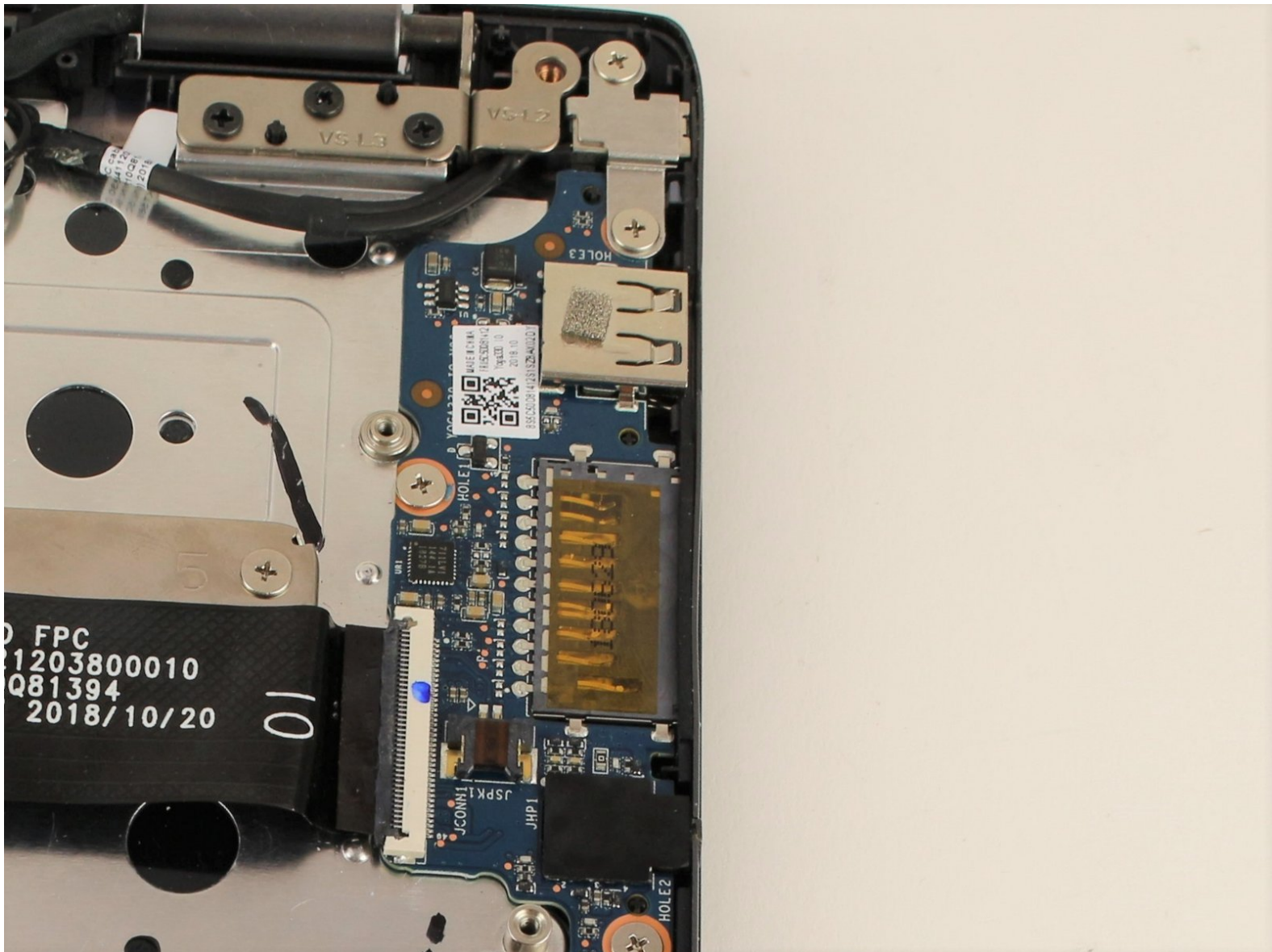




# Lenovo Flex 6-11IGM Auxiliary and USB Port Replacement

This guide will help you replace the auxiliary and USB ports in your Lenovo Flex 6-11IGM (model #: 81A70005US).

Written By: Rie Kuraoka



This document was generated on 2020-11-28 07:56:43 AM (MST).

## INTRODUCTION

If the auxiliary or USB port is not working in your Lenovo Flex 6-11IGM (model #: 81A70005US), use this guide to help you replace them.

These two ports are connected to each other so removing them are easy to do together. They allow the user to plug either an aux cord or USB into the laptop and the user is able to either output sound or transfer data. If the aux cord or USB is not going into the respective ports, or they aren't accepting the inputs of them, you may need to replace the ports themselves if the aux cord or the USB aren't damaged themselves.

Before beginning, make sure you power off the device and make sure the laptop is closed for an easier and safer replacement.



### TOOLS:

- [iFixit Opening Tools](#) (1)
  - [Phillips #00 Screwdriver](#) (1)
-

## Step 1 — Back Panel



- Flip the device over and lay it down with the underside facing upwards.

## Step 2



- Remove the ten screws with a Phillips #00 screwdriver.

### Step 3



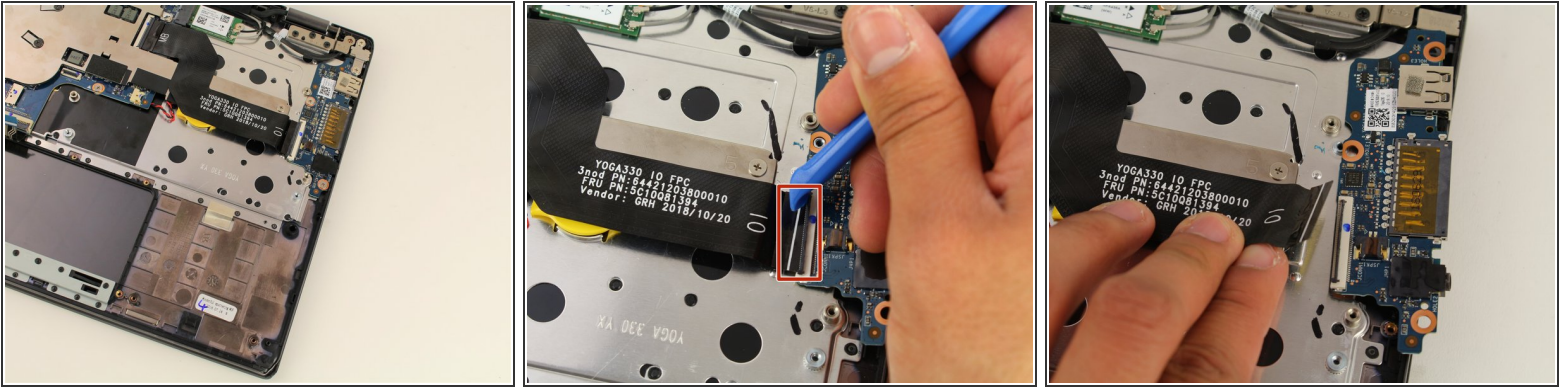
- Using a plastic opening tool, make your way around the edge of the laptop.

### Step 4



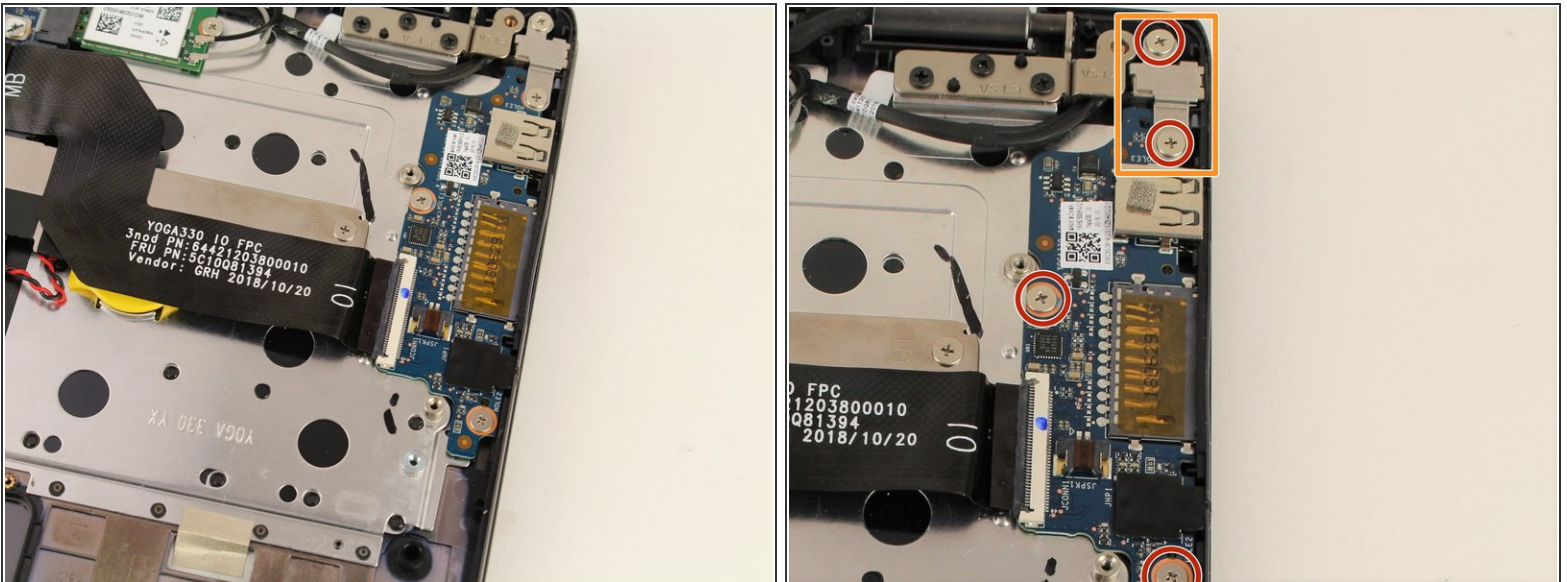
- After making sure the back panel is completely free from the body, remove the back panel.

## Step 5 — Auxiliary and USB Port



- Disconnect the ribbon connector using the iFixit opening tool tool by flipping up the black flap and pulling the ribbon out.

## Step 6



- Take the three 3.5mm silver screws out using the Phillips #00 screwdriver.
- Remove the protective silver shield before removing the ports.
- Using the iFixit opening tool, insert its end underneath the ports, and pull them upwards toward you to remove them safely.

To reassemble your device, follow these instructions in reverse order.