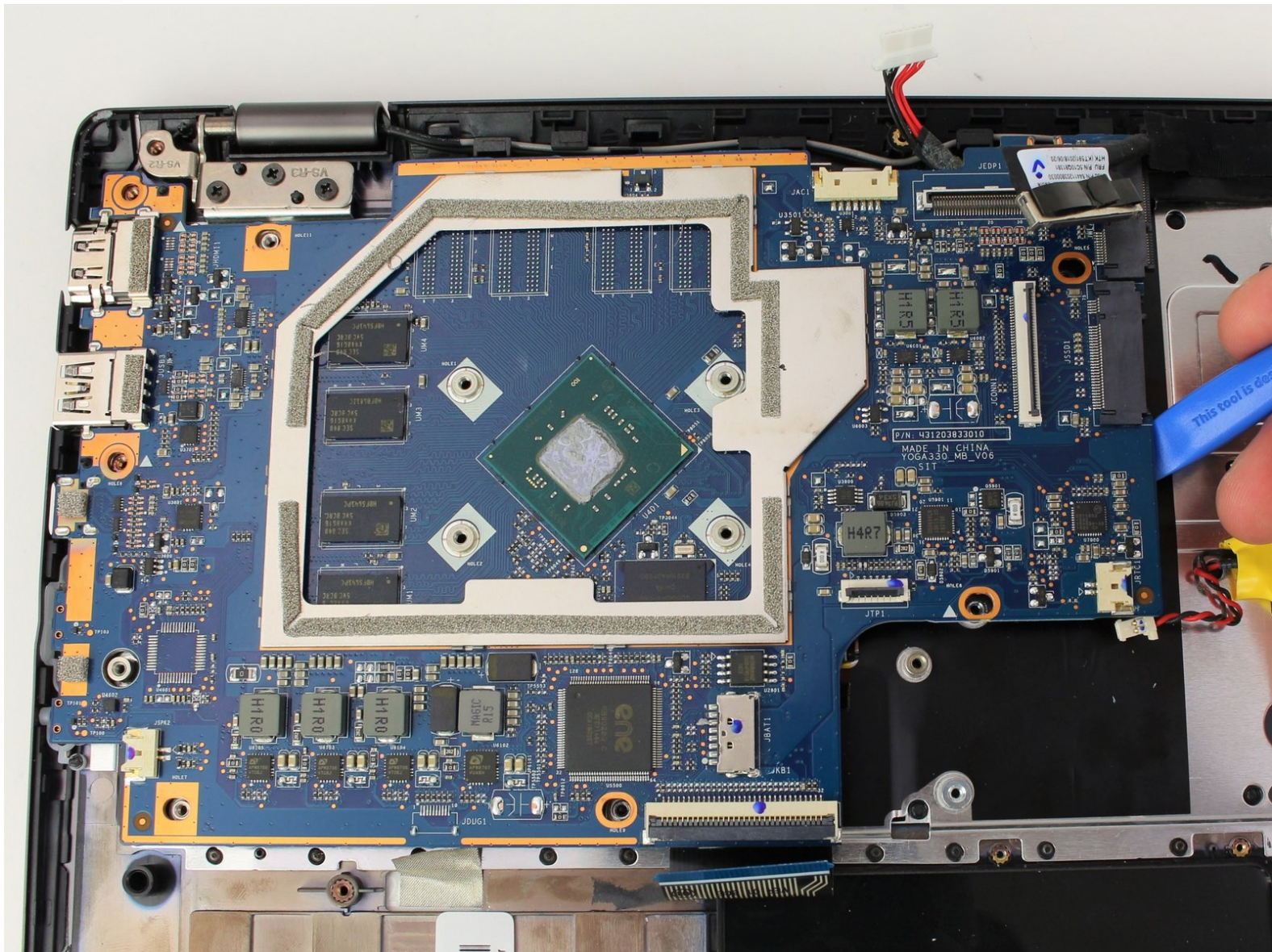




Lenovo Flex 6-11IGM Motherboard Replacement

Guide on how to reach and remove the motherboard for the Lenovo Flex 6-11IGM (model #: 81A70005US).

Written By: Dustin Healy



This document was generated on 2020-11-28 07:56:53 AM (MST).

INTRODUCTION

If your Lenovo Flex 6-11IGM (model #: 81A70005US) can not boot or crashes regularly and you have eliminated all other possible causes, you can attempt to fix the problem by following this guide on replacing the motherboard.

The motherboard contains all the computing components of your device and their power distribution infrastructure. Damage to this part of the computer is usually non-reparable for even moderately skilled users, so the main way to fix problems caused by this component is through replacement.

Before beginning make sure you power off the device and make sure the laptop is closed for an easier and safer replacement.



TOOLS:

- [iFixit Opening Tools](#) (1)
 - [Phillips #00 Screwdriver](#) (1)
-

Step 1 — Back Panel



- Flip the device over and lay it down with the underside facing upwards.

Step 2



- Remove the ten screws with a Phillips #00 screwdriver.

Step 3



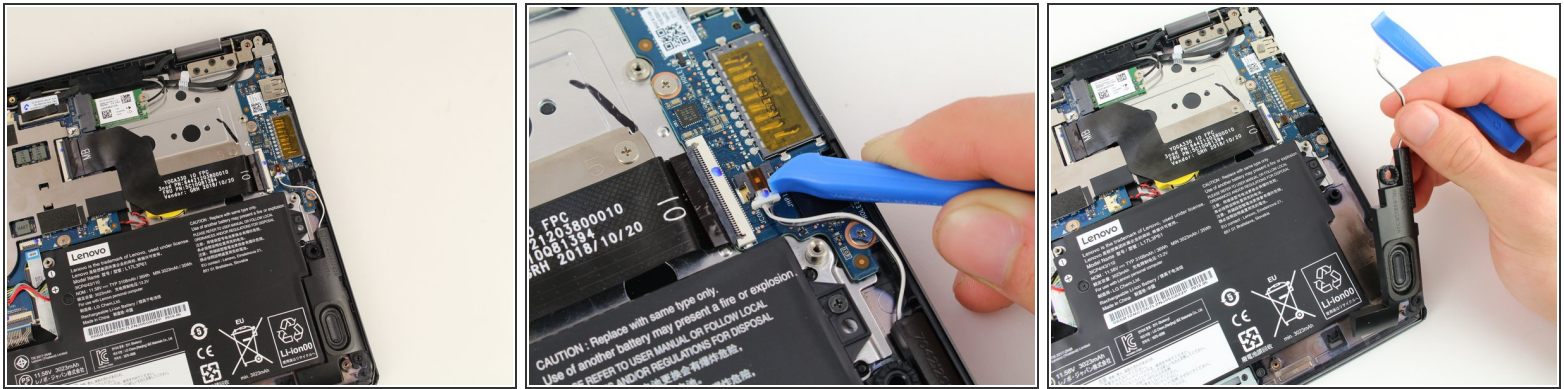
- Using a plastic opening tool, make your way around the edge of the laptop.

Step 4



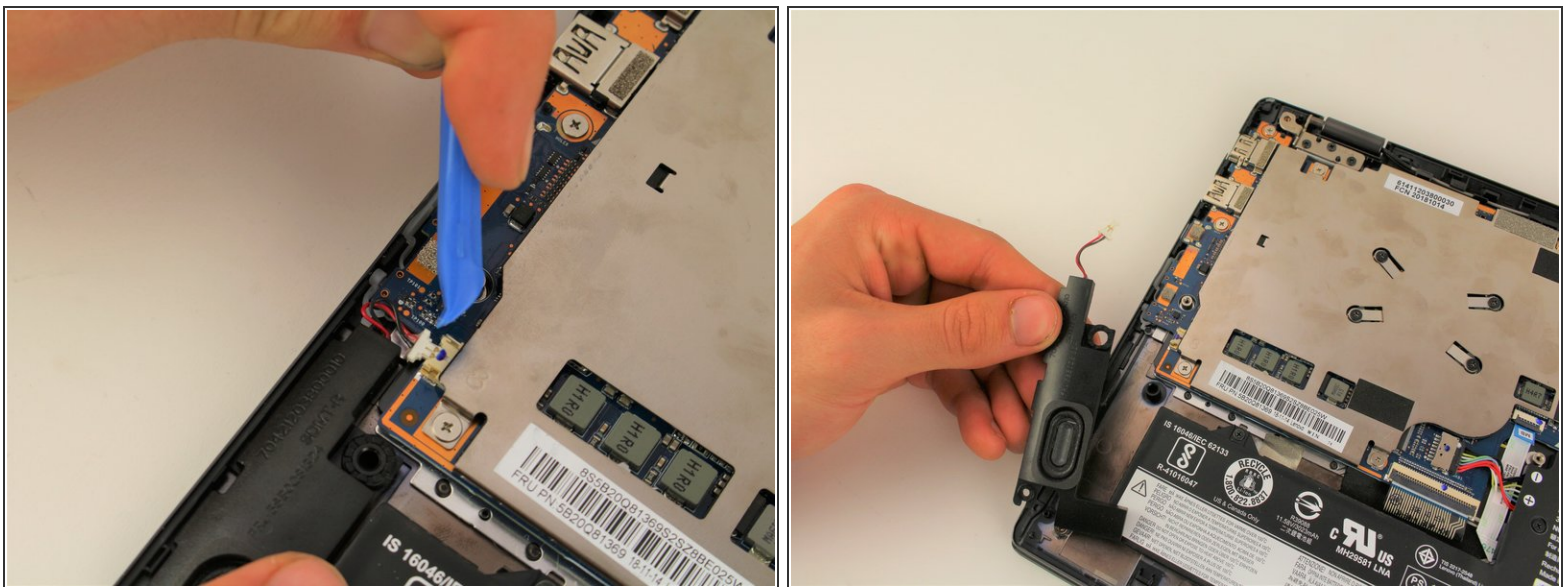
- After making sure the back panel is completely free from the body, remove the back panel.

Step 5 — Speaker Unit



- For the right speaker, disconnect the wire using the iFixit opening tool.
- Pull the speaker out.

Step 6



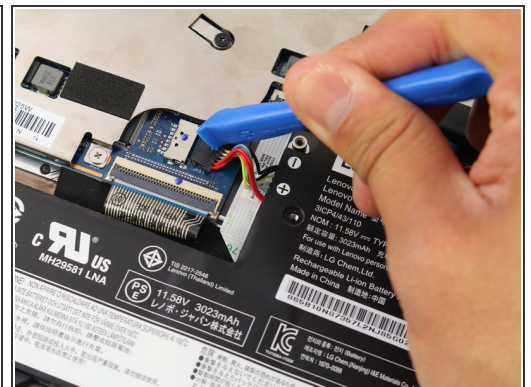
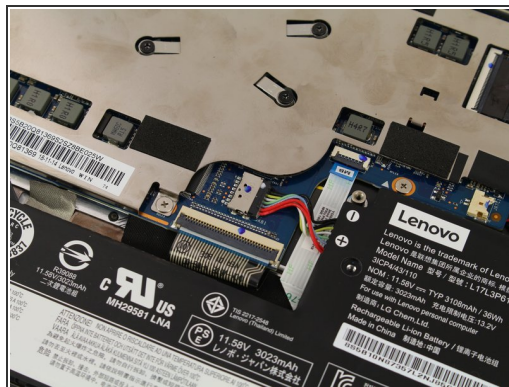
- For the speaker on the left, disconnect the wire using the iFixit opening tool.
- Pull the speaker out.

Step 7 — Battery



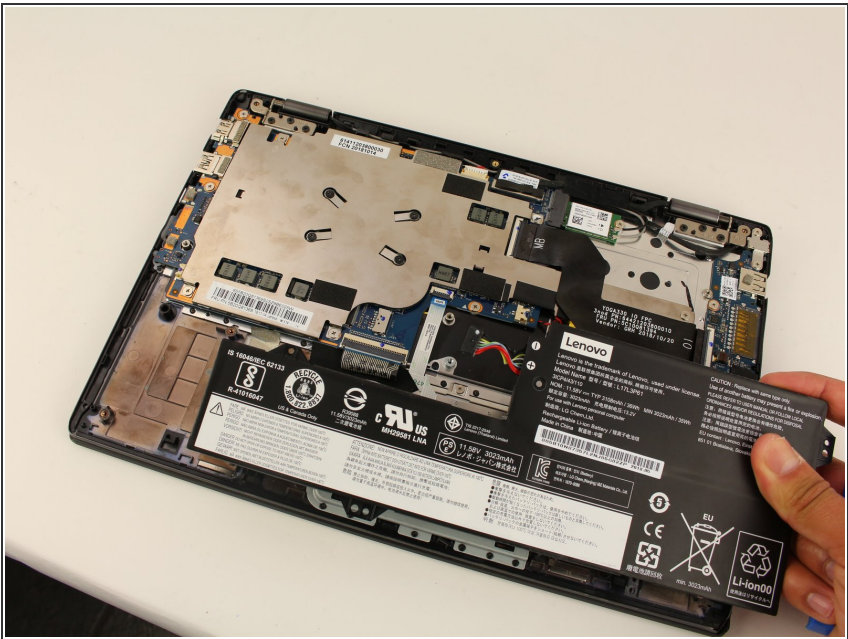
- Remove the five 3.9 mm Phillips #00 black screws holding the battery in place.

Step 8



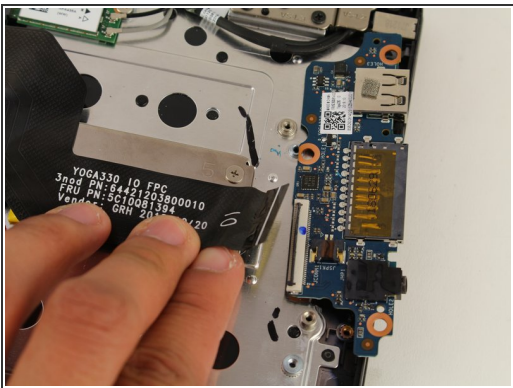
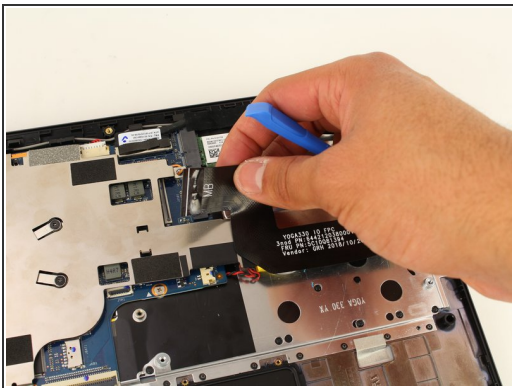
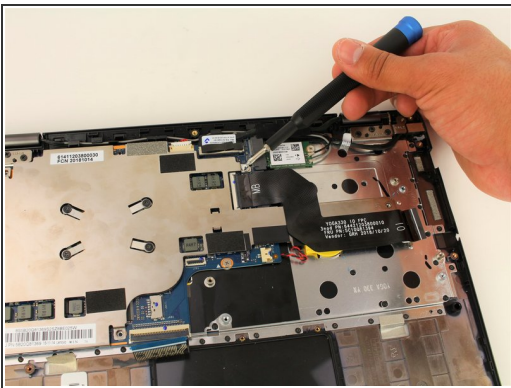
- Pull out the multicolored connecting cables using an iFixit opening tool.

Step 9



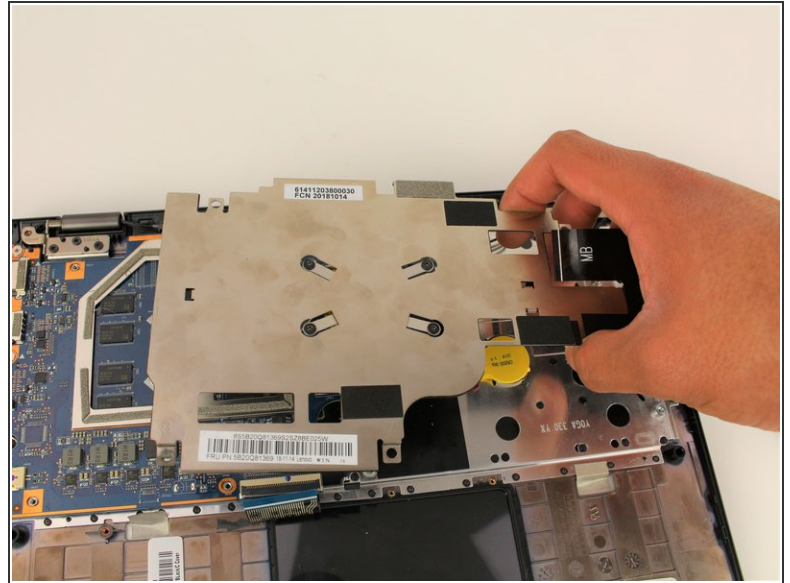
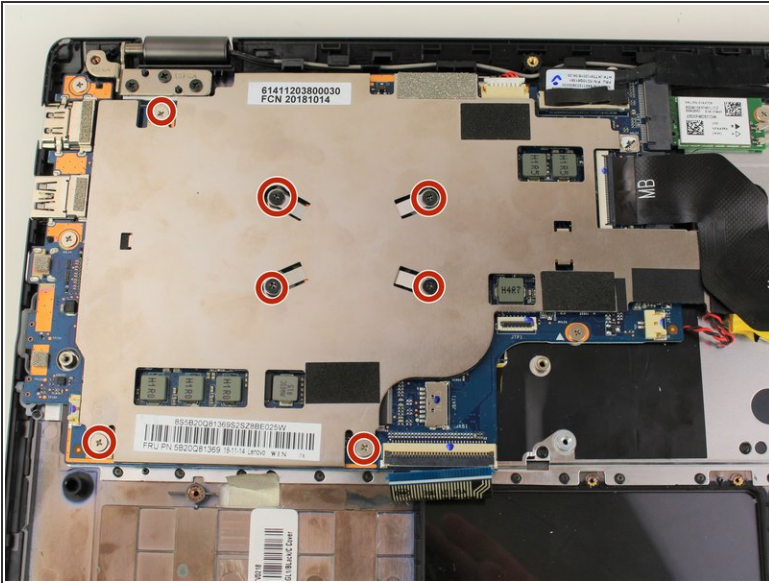
- Remove the now disconnected battery from the laptop.

Step 10 — Heat Sink



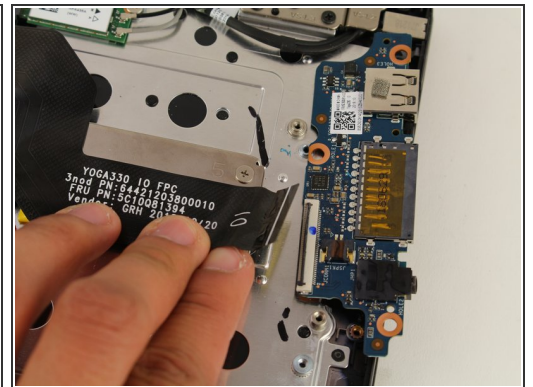
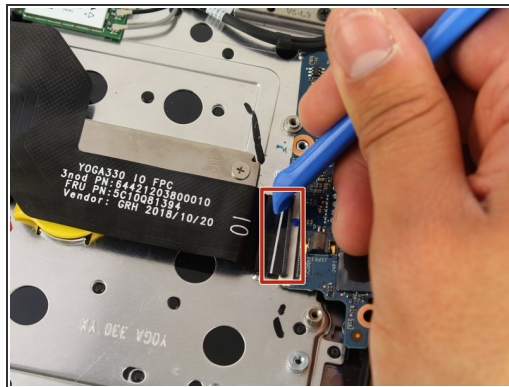
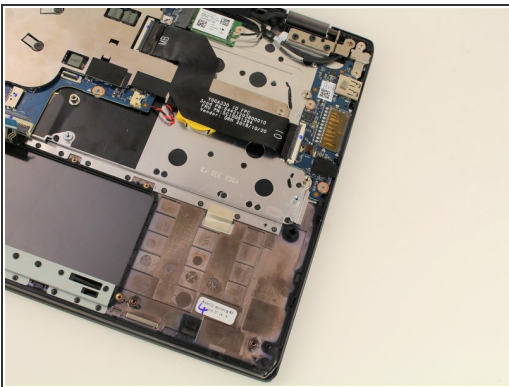
- Disconnect the ribbon connector from both ends by disengaging the black latch and pulling it directly from its port.

Step 11



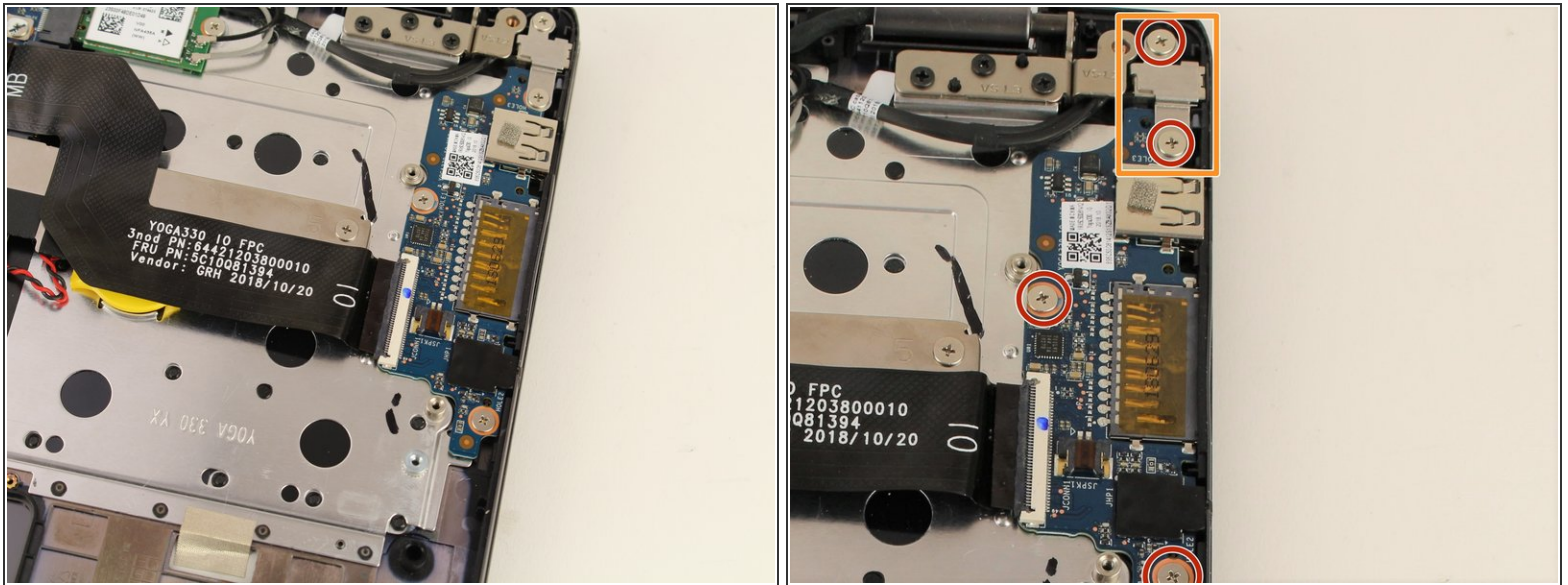
- Remove the 3.5 mm length screws in the numbered order from 1-10 using the Phillips #00 screwdriver (not all are shown in the first image).
- Remove the heat sink.

Step 12 — Auxiliary and USB Port



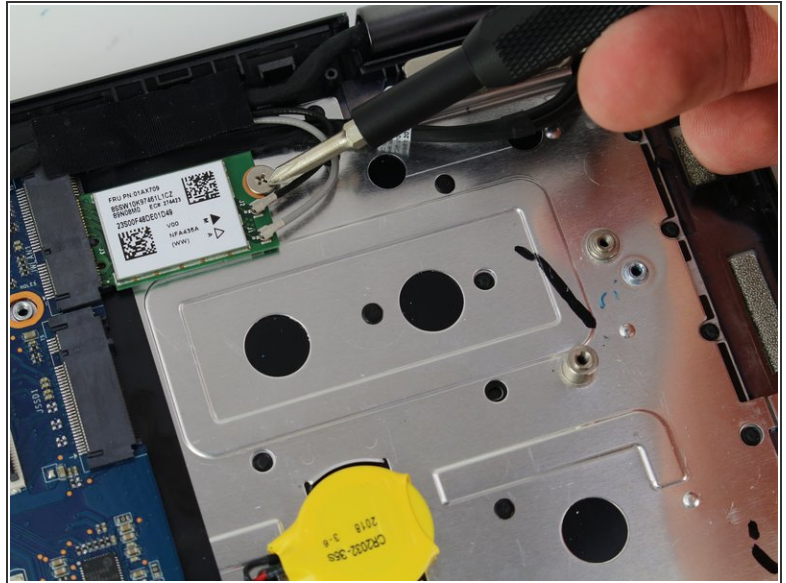
- Disconnect the ribbon connector using the iFixit opening tool tool by flipping up the black flap and pulling the ribbon out.

Step 13



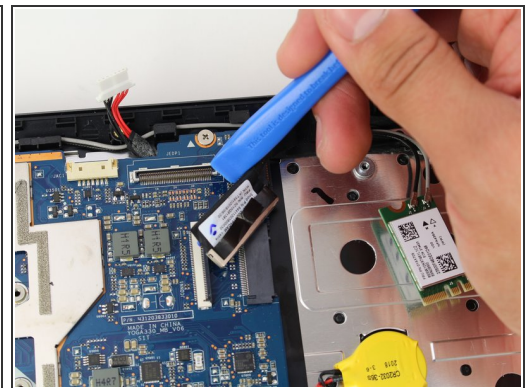
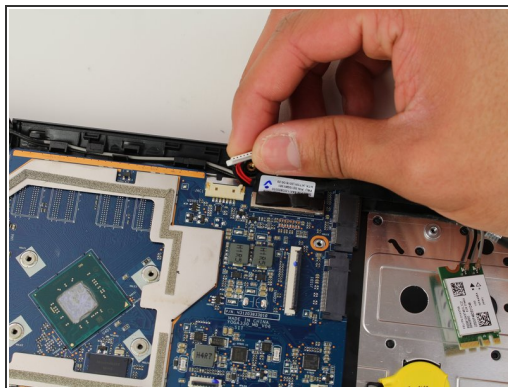
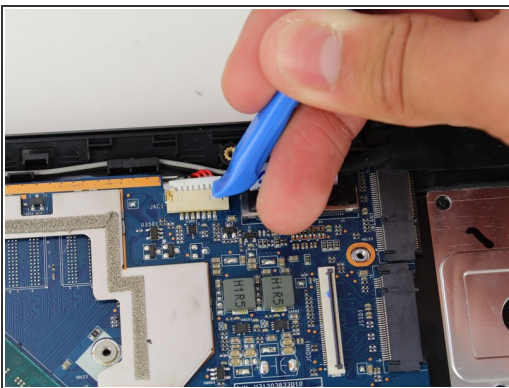
- Take the three 3.5mm silver screws out using the Phillips #00 screwdriver.
- Remove the protective silver shield before removing the ports.
- Using the iFixit opening tool, insert its end underneath the ports, and pull them upwards toward you to remove them safely.

Step 14 — Motherboard



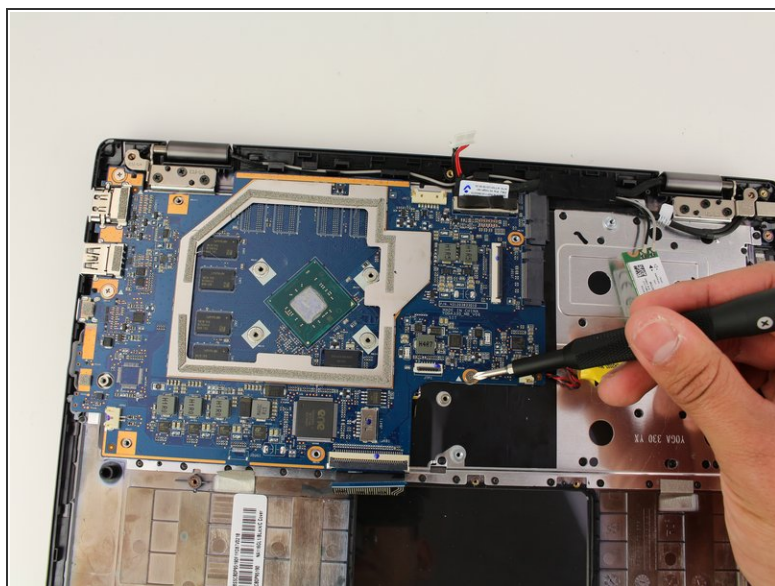
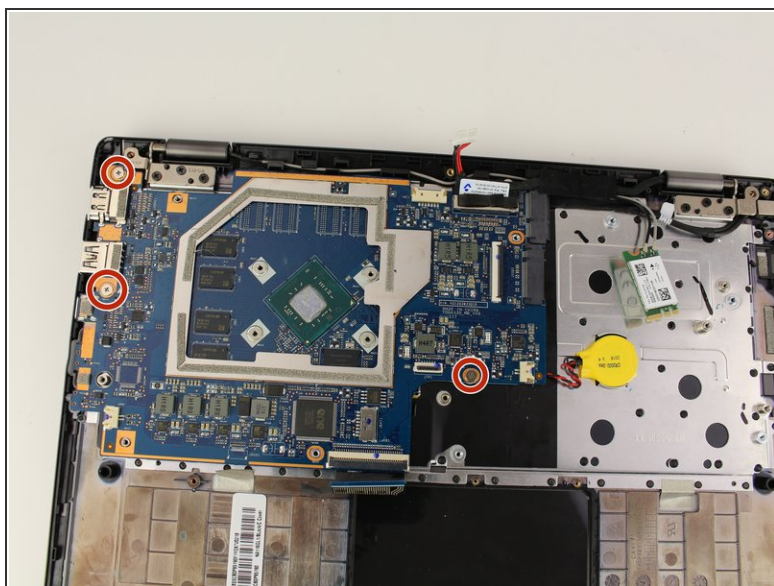
- Unscrew the single 3.5 mm screw from the RAM card using a Phillips #00 screwdriver.
- Unplug from motherboard.

Step 15



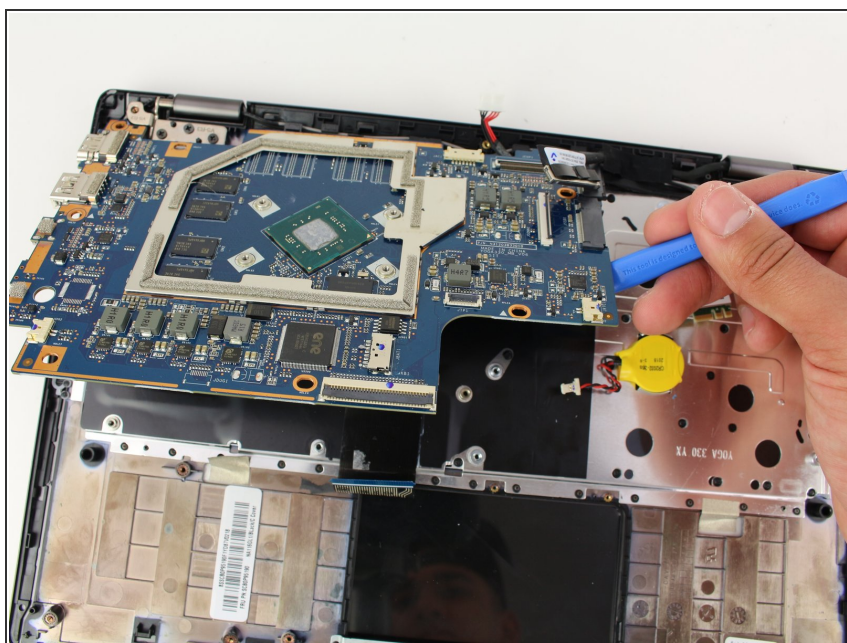
- Use an opening tool to remove the connecting cables.

Step 16



- Unscrew the three 3.5 mm retaining screws from the motherboard using a Phillips #00 screwdriver.

Step 17



- Pick up and remove motherboard from laptop.

To reassemble your device, follow these instructions in reverse order.