



InFocus IN3104 Color Wheel Replacement

A guide to replace the Color Wheel on the InFocus IN3104.

Written By: Christopher Held



INTRODUCTION

If your InFocus IN3104 has fuzzy or distorted color, this guide is for you. The fuzzy or distorted color most likely means that your color wheel is broken or defective. If your color wheel is broken it will need to be replaced. The color wheel provides color to the projection and is needed for display.



TOOLS:

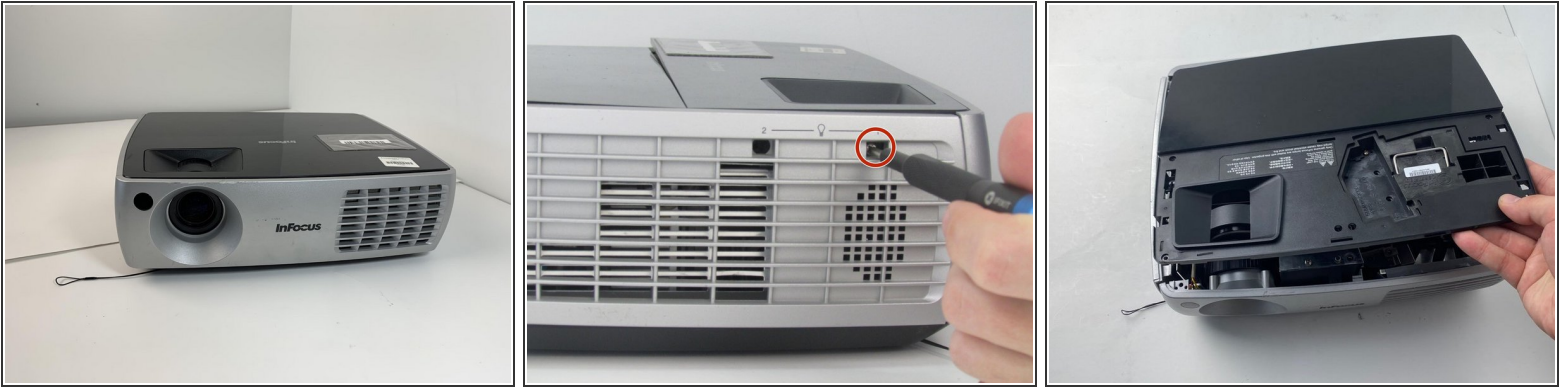
- [Phillips #1 Screwdriver](#) (1)
- [Magnetic Project Mat](#) (1)
- [Spudger](#) (1)



PARTS:

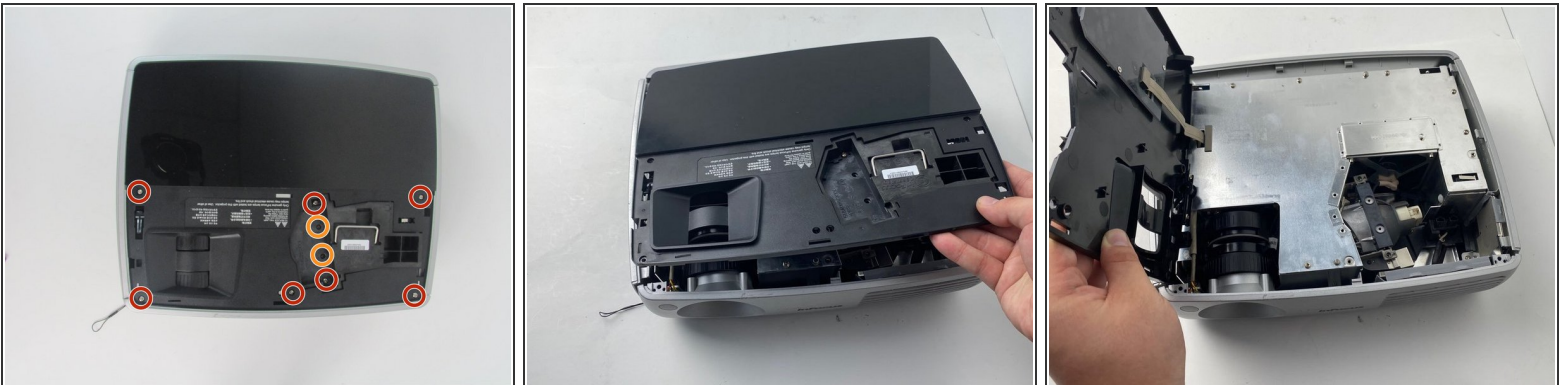
- [InFocus IN3104 Color Wheel](#) (1)

Step 1 — Top Cover



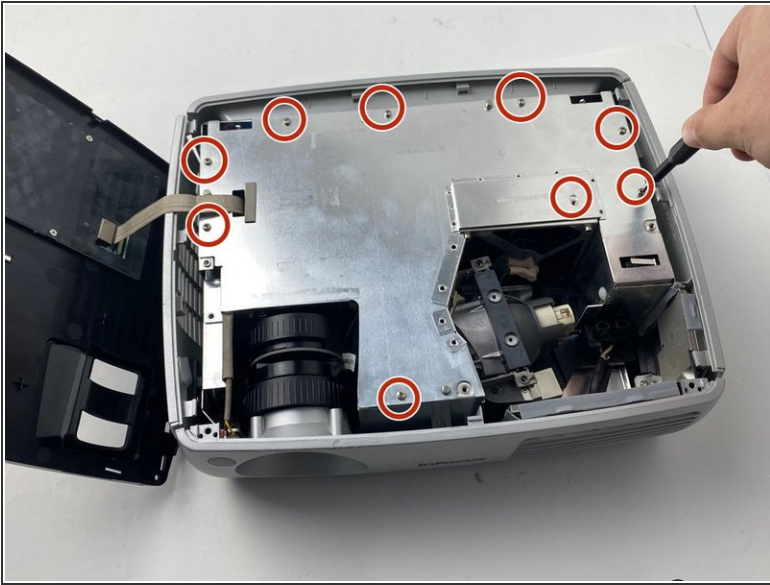
- Turn the projector so that the lens is facing you.
- i** On the left side of the projector, there is a screw and a knob inside of the small grate.
- Use a Phillips #1 screwdriver to remove the 6 mm screw that secures top cover.
- Remove the service cover.

Step 2



- Use a Phillips #1 screwdriver to remove the seven 6 mm screws.
 - Use a Phillips #1 screwdriver to remove the two 5 mm screws.
 - Remove the top cover.
- ⚠ Do not pull the cover too hard. It may damage the wire that is connected to the motherboard.**

Step 3 — InFocus IN3104 Metal Cover Disassembly



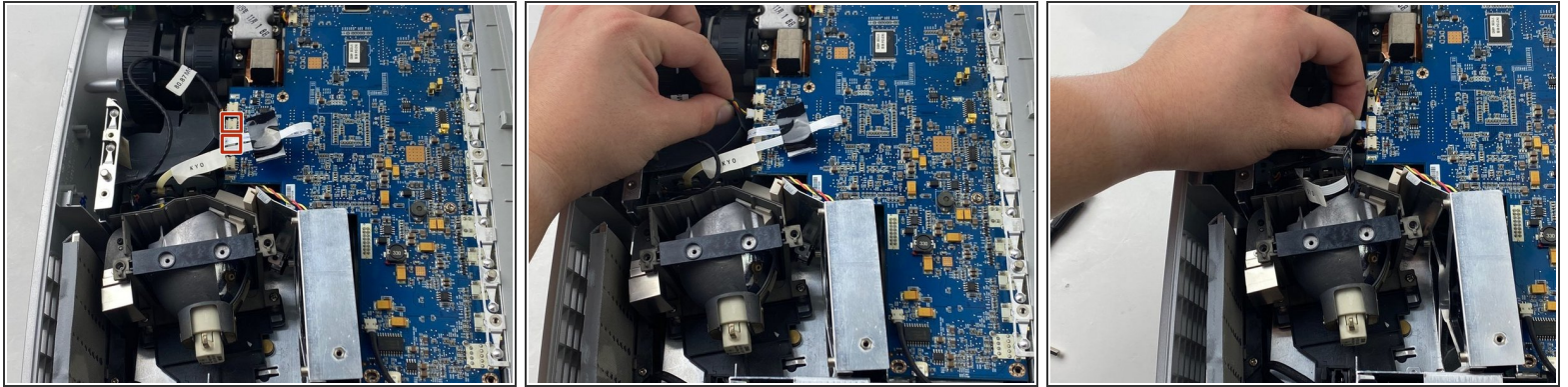
- Use a Phillips #1 screwdriver to remove the nine 6 mm screws.
- Lift up the metal cover and set it aside to reveal the motherboard.

Step 4



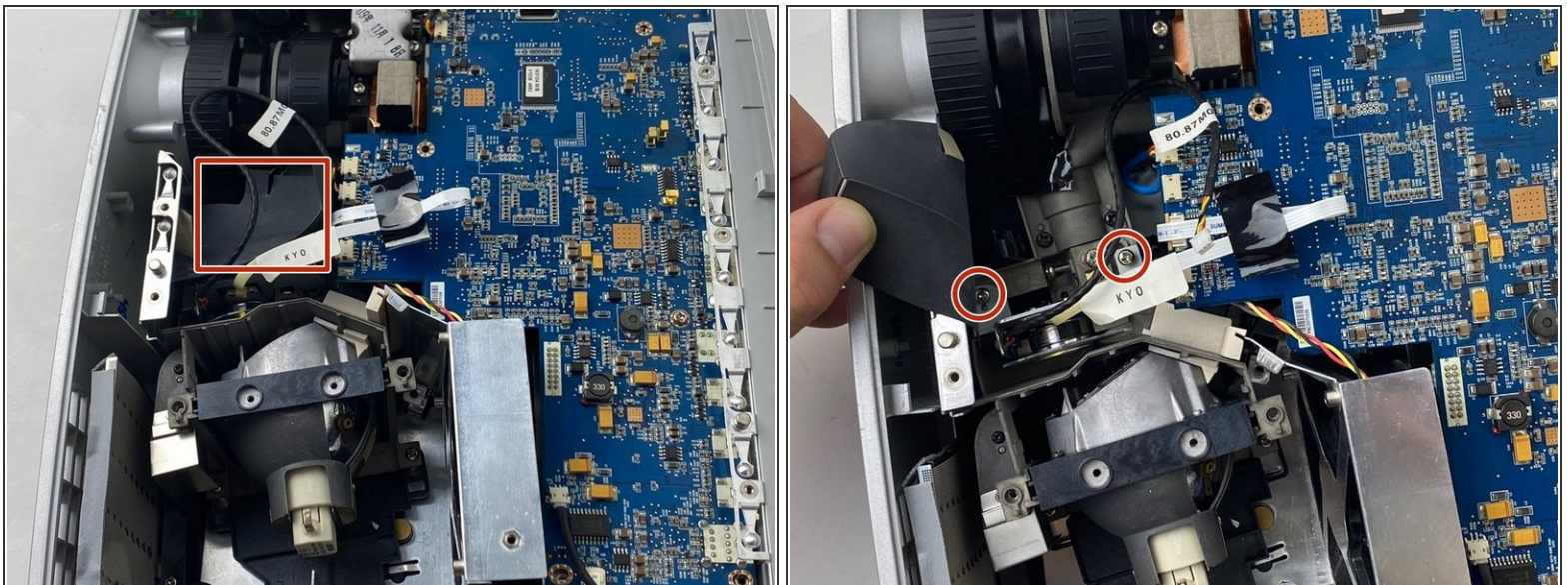
- Carefully pry up the black plastic locking bar of the ZIF connector on the motherboard with a plastic spudger.
- Pull out the blue-tipped, white ribbon cable from the connector.
- Remove the metal cover.

Step 5 — Color Wheel



- Unplug two cables from the edge of the motherboard labeled 80.87 MO and KYO.

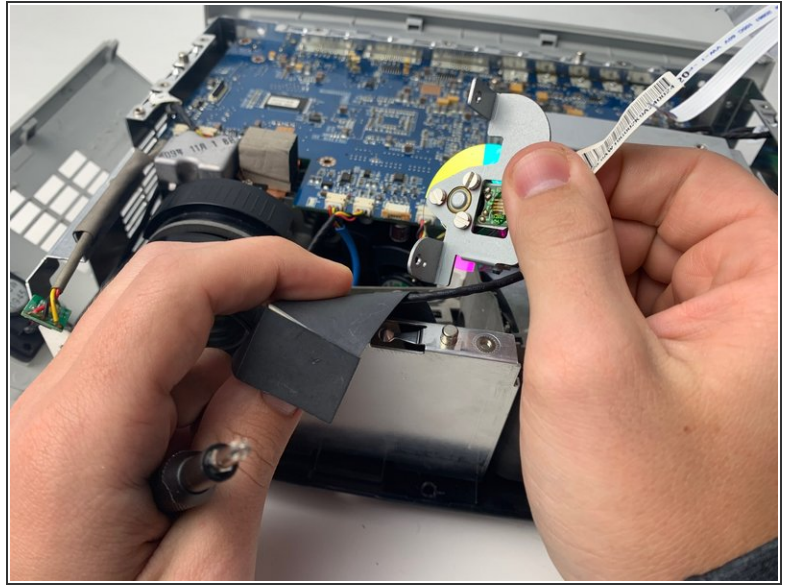
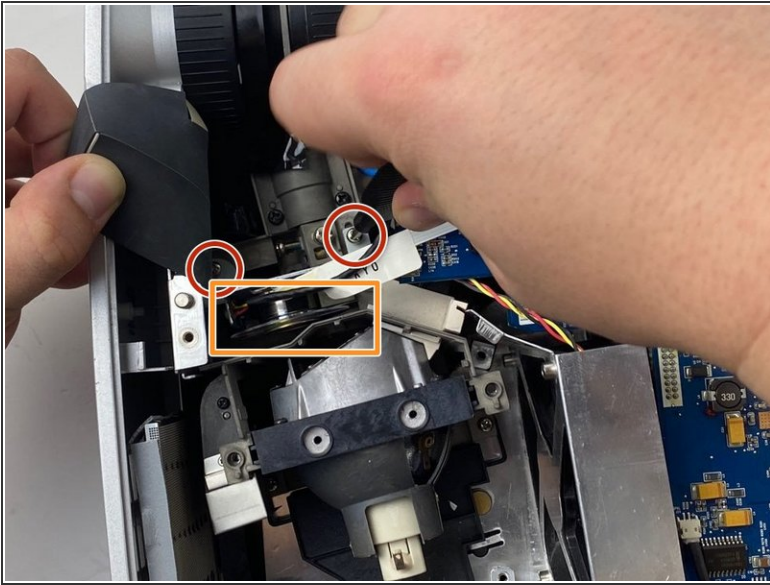
Step 6



⚠ Carefully lift up the black paper cover. Do not completely remove it from the device.

- Lift the paper cover up to reveal two 6mm screws.

Step 7



- Use a Phillips #1 screwdriver to remove the two 6mm screws.
- Remove the color wheel from the device by lifting it out of the projector.

To reassemble your device, follow these instructions in reverse order.