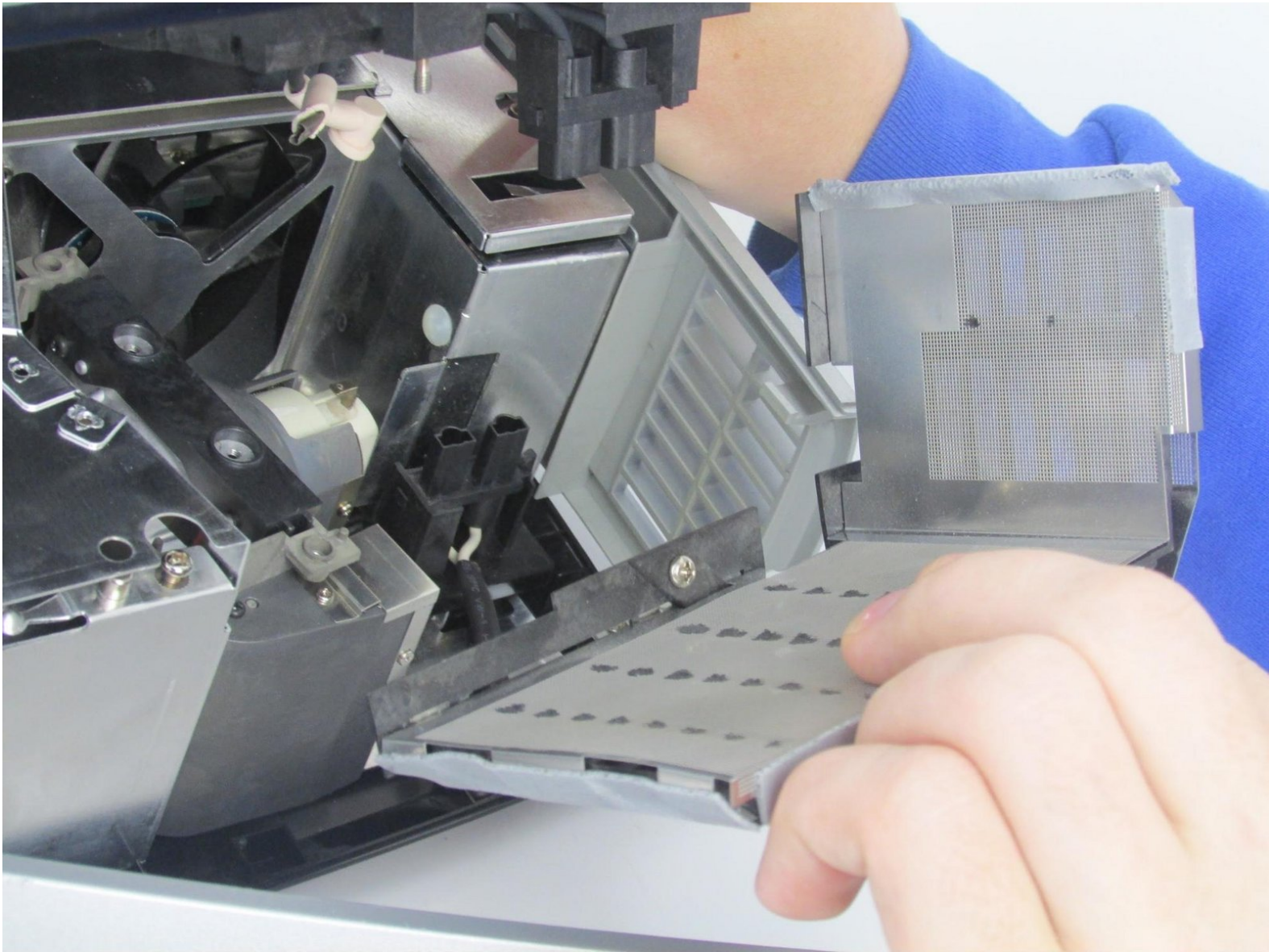




InFocus IN3104 Filter Replacement

If the filter has dents and need replacement, use this guide to remove and replace the filter.

Written By: Tae Min Kim



INTRODUCTION

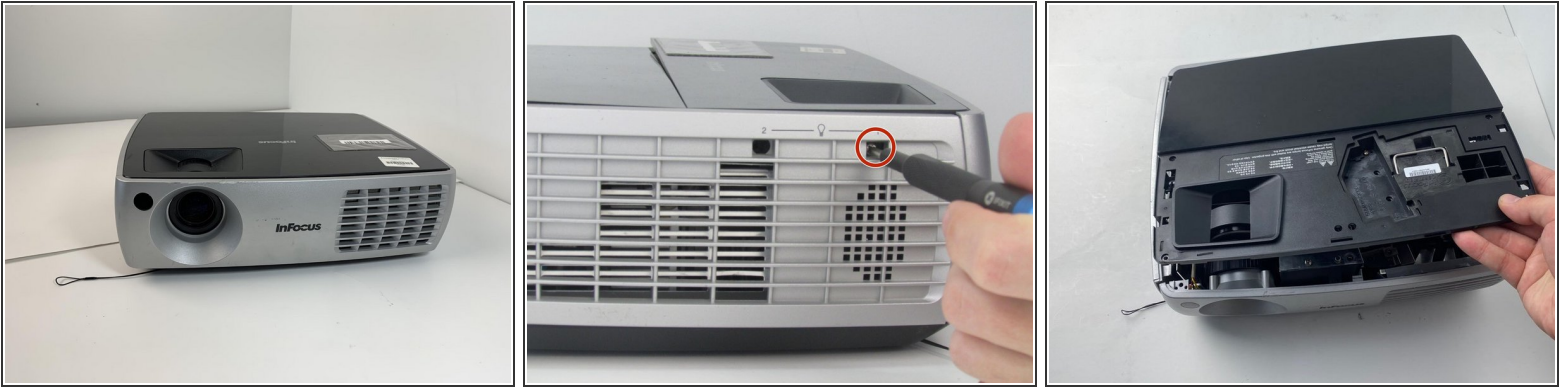
If your InFocus IN3104 has high temperature, you most likely have a clogged or defective filter. The filter is designed to prevent any dust or debris from entering the device. When it is clogged or damaged, it may result in high device temperature. Dust can also create static electricity if the power cord is connected. Remove any power sources before you start.



TOOLS:

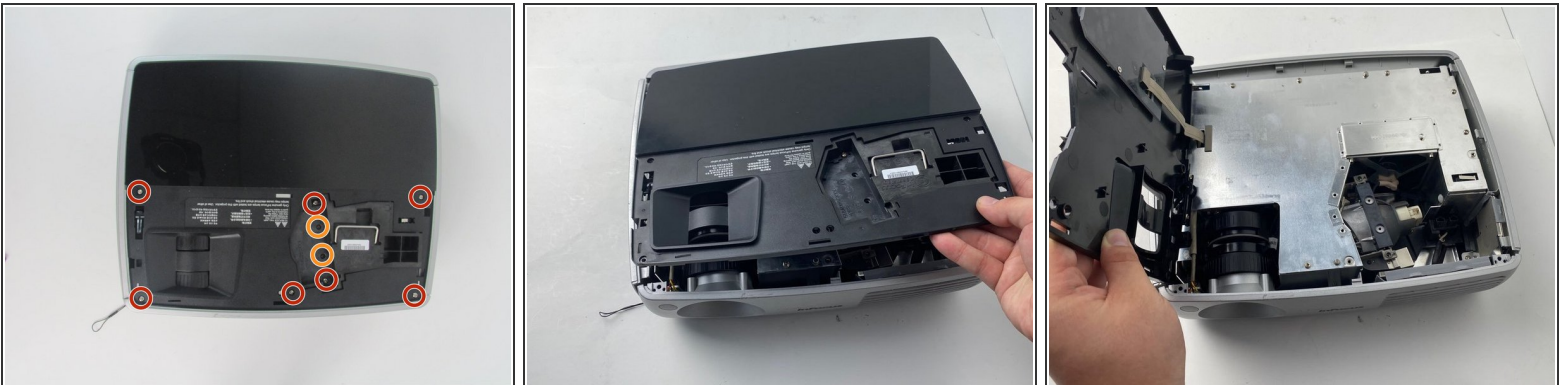
- [Phillips #1 Screwdriver](#) (1)
 - [Magnetic Project Mat](#) (1)
-

Step 1 — Top Cover



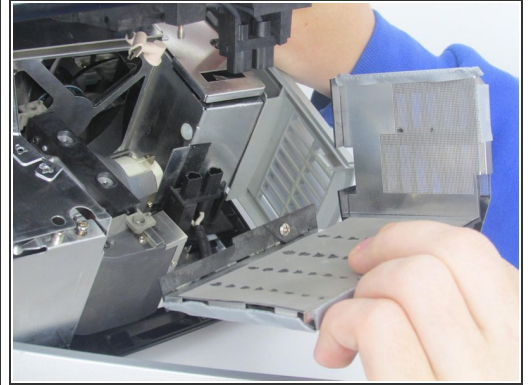
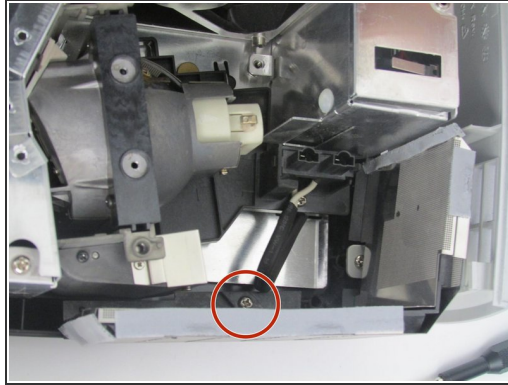
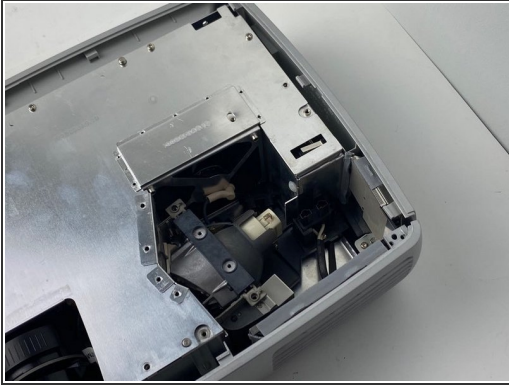
- Turn the projector so that the lens is facing you.
- i** On the left side of the projector, there is a screw and a knob inside of the small grate.
- Use a Phillips #1 screwdriver to remove the 6 mm screw that secures top cover.
- Remove the service cover.

Step 2



- Use a Phillips #1 screwdriver to remove the seven 6 mm screws.
 - Use a Phillips #1 screwdriver to remove the two 5 mm screws.
 - Remove the top cover.
- ⚠ Do not pull the cover too hard. It may damage the wire that is connected to the motherboard.**

Step 3 — Filter



- Use a Phillips # 1 screw driver to remove the 6 mm screw that secures the filter.
- Once the screw is removed, remove the filter by pulling it straight out.

To reassemble your device, follow these instructions in reverse order.