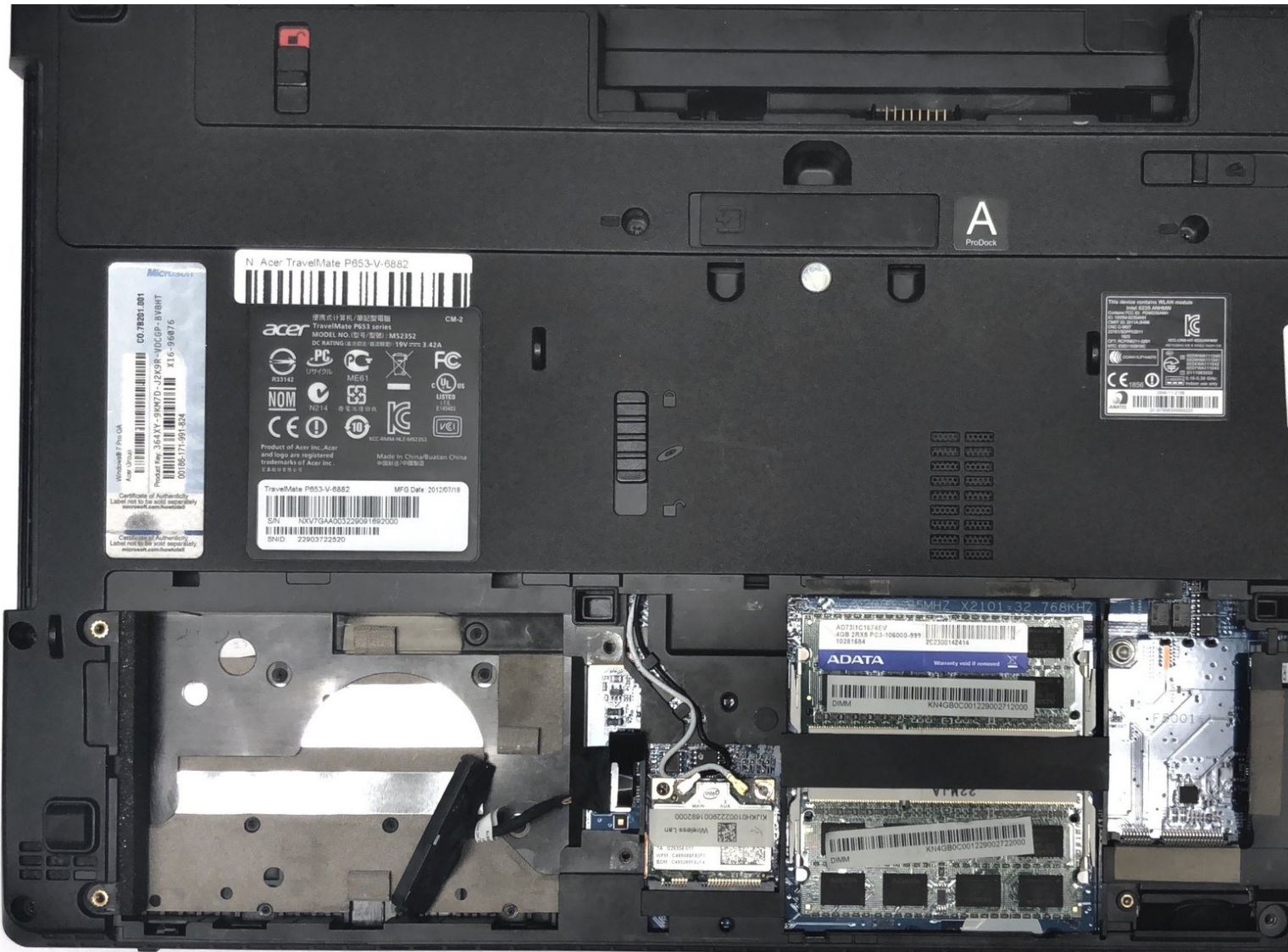




Acer TravelMate P653-V-6882 Base Door Replacement

Guide on how to remove the base door for the Acer TravelMate P653-V-6882 in order to access memory module, WLAN module and HDD.

Written By: Daniel Popovic



INTRODUCTION

Accessing many components on the Acer TravelMate P653-V-6882 requires you to remove the base door first. For example if you need to access the RAM module, WLAN module or HDD in your Acer TravelMate P653-V-6882, or if you want replace other internals, you are required to remove the base door.

Here is our guide on how to remove the base door for the Acer TravelMate P653-V-6882 safely!



TOOLS:

- [Phillips #1 Screwdriver](#) (1)
 - [iFixit Opening Tools](#) (1)
-

Step 1 — Battery Pack



- Turn the computer over so the base is facing up.
- Slide the battery lock to unlock position.

Step 2



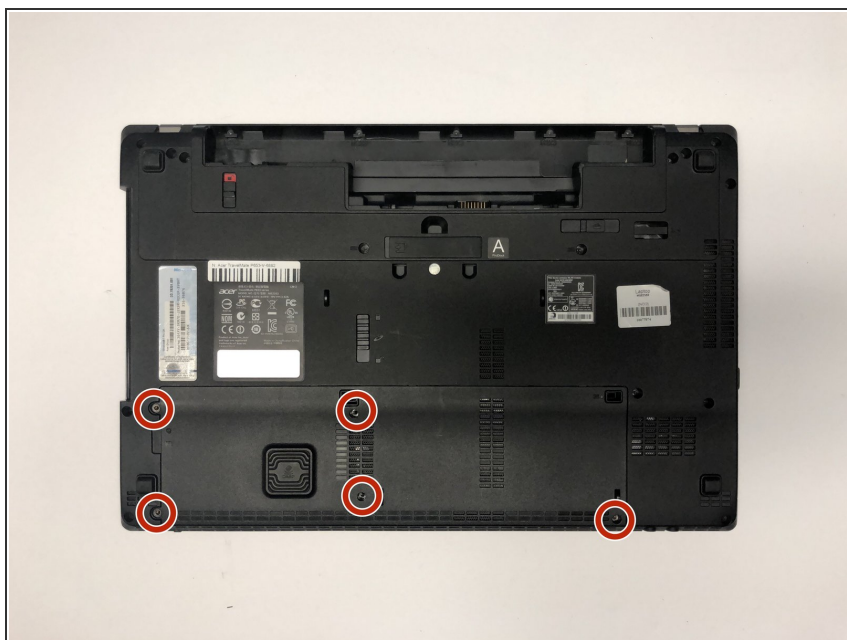
- Slide the battery release latch to the right.
- ⓘ The battery pack will pop out.

Step 3



- Lift the battery up.
- Pull out the battery.

Step 4 — Base Door



- Remove the five 7mm Phillips #1 screws.

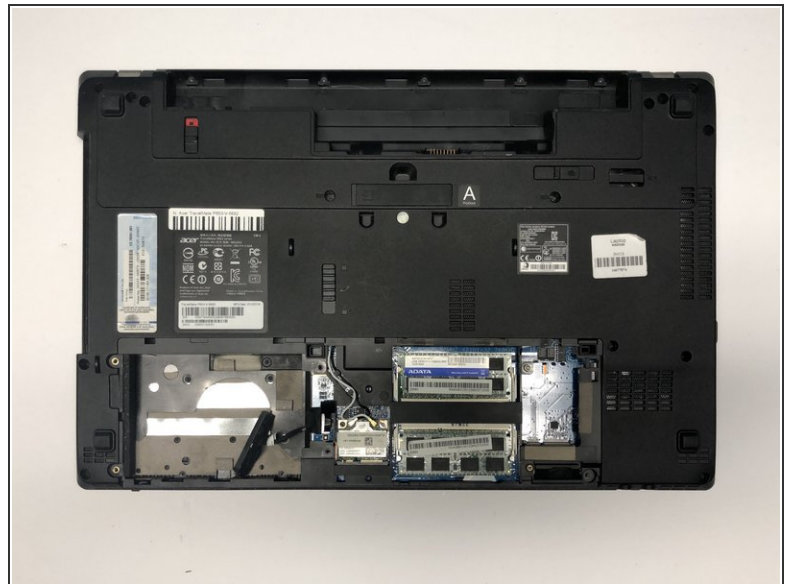
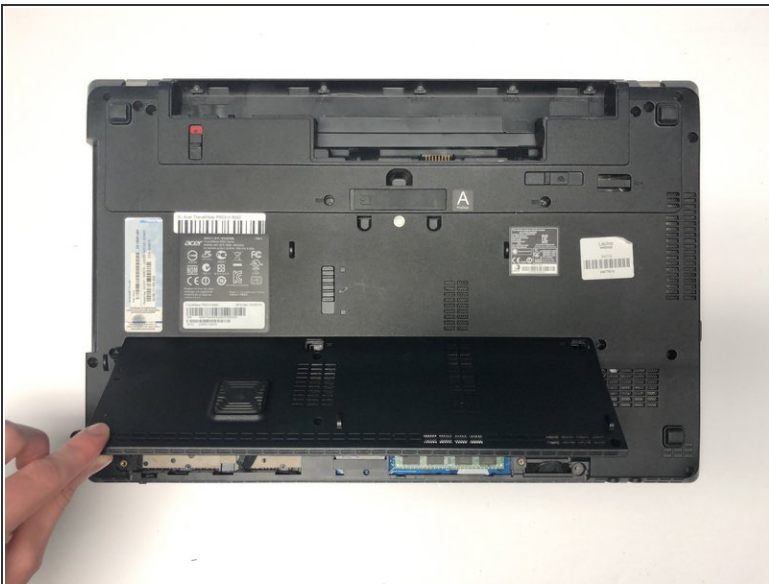
Step 5



- Use the opening tool to separate base door from the bottom of the laptop.

⚠ Be careful not to bend or crack the plastic back cover.

Step 6



- Gently pry open the base door by pushing up.
- Pull out the base door.

⚠ Be careful not to bend or crack the plastic back cover.

To reassemble your device, follow these instructions in reverse order.