



Parrot Skycontroller 2 Buttons Replacement

How to replace the buttons in a Parrot Skycontroller 2.

Written By: Samuel Lama



INTRODUCTION

If you plan on replacing the buttons in your Parrot Skycontroller 2 then please look at our [troubleshooting page](#) to help fix issues. If the buttons will not work or cannot be cleaned, then it is necessary to replace them. To replace the buttons, use this guide.

Before beginning this repair please reference our [Battery Replacement Guide](#) to properly disconnect the battery to allow for safe working conditions.



TOOLS:

- [Flathead 4 mm Screwdriver](#) (1)
 - [TR6 Torx Security Screwdriver](#) (1)
 - [iFixit Opening Tools](#) (1)
-

Step 1 — Battery



- Flip your controller face down.

Step 2



- Remove one 9mm screw using a #4 flathead screwdriver.

Step 3



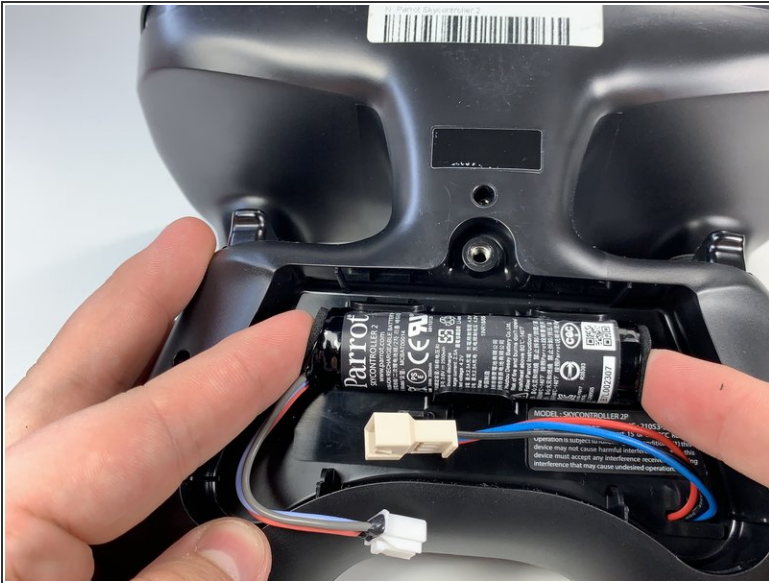
- Insert the plastic opening tool into the top of the cover and pry upwards to lift the battery cover.
- Remove the cover by pulling up and out.

Step 4



- Pull the connectors out by gently pushing the tabs and pulling up on the connector.
- Disconnect the battery from the remote by pressing the white tab and pulling the connectors apart.

Step 5



- Remove the battery from its brackets by pulling up on the ends of the battery.

Step 6 — Buttons



- Remove the seven black 11mm screws using the Torx TR6 screwdriver.
- ⓘ There is a hidden screw located behind the sticker in the battery compartment.
- Pull back the sticker with your finger nail and remove the one black 11mm screw using the Torx TR6 screwdriver.

Step 7



- Remove the seven silver 4mm screws from around the edge of the top plate using the Torx TR6 Screwdriver.

i The opposite side to the third picture has a screw located on each side of the USB port.

Step 8




- Remove the battery compartment plate by pulling up and out.

Step 9




- Remove the top plate by pushing on the corners with your hand.

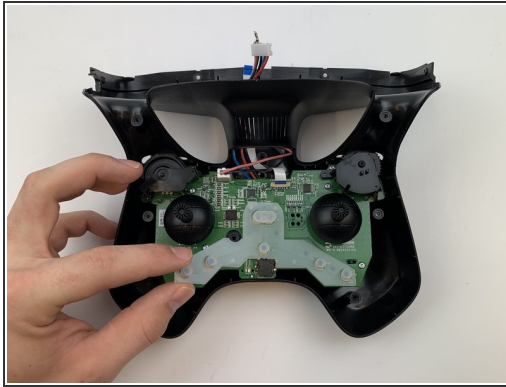
 Be careful to not pull too hard on the cable.

Step 10



- Remove the face plate by pulling up and out.
-  Buttons will fall out when this plate is removed.

Step 11



- Use some force pull up and out on the rubber backing for the buttons.

To reassemble your device, follow these instructions in reverse order.