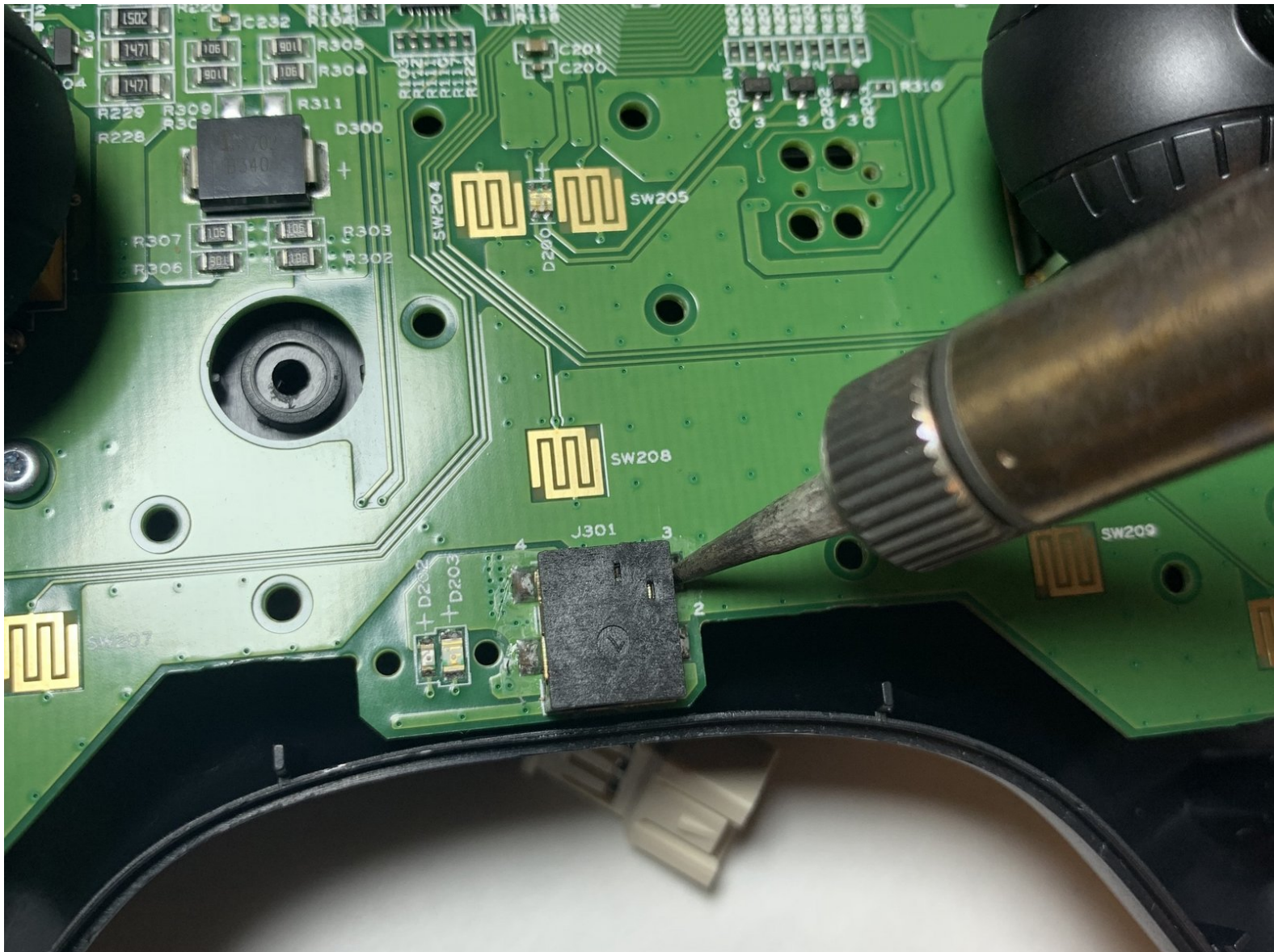




Parrot Skycontroller 2 Power Port Replacement

This guide will explain how to replace how to replace the power port.

Written By: Jonathan Epperly



INTRODUCTION

If using the Skycontroller 2 and you think the battery is not being charged or the controller is not receiving power, you might want to replace the power port. The power port supplies power to the battery in order to charge.

In order to replace the power port, first make sure the battery is disconnected and there is no power to the Skycontroller 2.

The power port will require soldering to remove, so check out our [How to Solder and Desolder Connections](#) guide to learn how to solder if you're unfamiliar with the practice.



TOOLS:

- [Soldering Iron](#) (1)
 - [T6 Torx Screwdriver](#) (1)
 - [Flathead 4 mm Screwdriver](#) (1)
 - [iFixit Opening Tools](#) (1)
-

Step 1 — Power Port



- Flip the controller upside down.

Step 2



- Remove one 9mm screw using a #4 flathead screwdriver.

Step 3



- Insert the plastic opening tool into the top of the battery cover and pry upwards to lift the cover.
- Remove the cover by pulling up and out.

Step 4



- Pull the connectors out by gently pushing the tabs and pulling up on the connector.
- Disconnect the battery from the remote by pressing the white tab and pulling apart.

Step 5



- Remove the battery from it's brackets by pulling up gently on the ends of the battery.
- ⓘ Some force may be required to separate the battery from it's brackets.

Step 6



- Remove the seven black 11mm screws using the Torx TR6 screwdriver.
- ⓘ There is a hidden screw located behind the sticker in the battery compartment.
- Pull back the sticker with your finger nail and remove the one black 11mm screw using the Torx TR6 screwdriver.

Step 7



- Remove the seven silver 4mm screws from around the edge of the top panel using the Torx TR6 Screwdriver.

i The opposite side to the third picture has a screw located on each side of the USB port.

Step 8




- Remove the battery compartment plate by pulling up and out.

Step 9



- Remove the top plate by pushing on the corners with your hand.

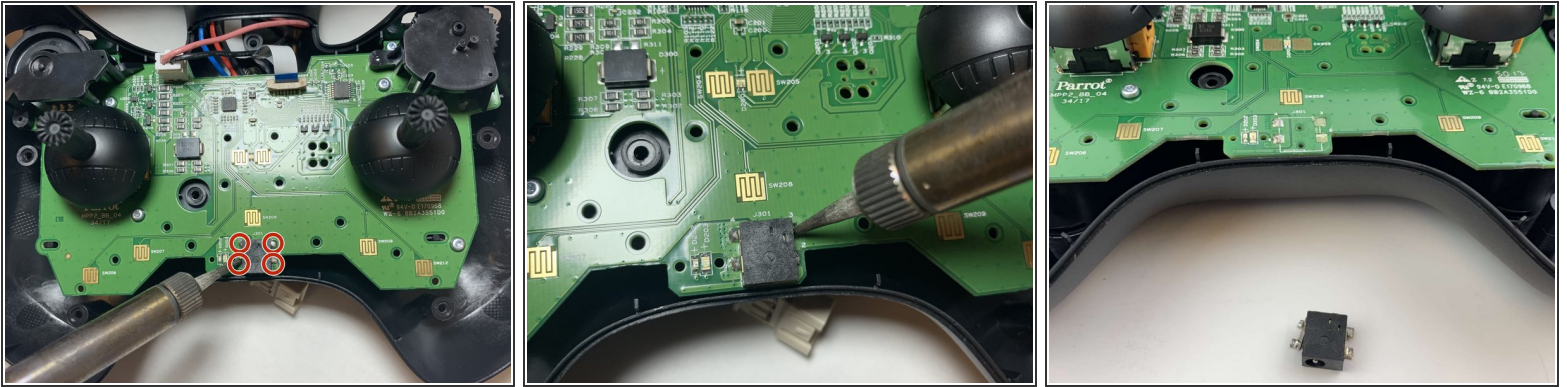
 Be careful to not pull too hard on the cable.



Step 10



- Remove the face plate by pulling up and out.

Step 11



- Make sure the controller is flat, then proceed to desolder the power port.
 - Desolder the four connection points surrounding the charging port.
 - Remove the power port from the controller.
-  For help with soldering best practices, check out our [How to Solder and Desolder Connections](#) guide.
-  Excessive heat can damage the power port, so do not apply the soldering iron to the component for too long.

To reassemble your device, follow these instructions in reverse order.