



Lenovo Legion Y530-15ICH Solid State Drive Replacement

Each and every computer will need a permanent...

Written By: Kaylie Klausing



INTRODUCTION

Each and every computer will need a permanent memory storage to store large amounts of data. Typically, a computer will include a hard drive, which is the standard form of storage. The solid state drive (SSD) loads and reads files faster than a standard hard drive, and are often lower in storage capacity. If your device is loading slower than normal or if you can't access the files in your computer, your SSD may be corrupted and needs to be replaced.

This guide is to replace a faulty SSD or upgrade to an SSD with more capacity. Ensure that the computer is completely powered off and backups have been made before beginning this guide.

TOOLS:

[JIS #1](#) (1)
[iFixit Opening Picks \(Set of 6\)](#) (1)

PARTS:

[Crucial P3 NVMe PCIe M.2 2280SS SSD](#) (1)
[Crucial P3 Plus NVMe PCIe M.2 2280SS SSD](#) (1)
[Crucial P5 Plus PCIe M.2 2280SS SSD](#) (1)

Step 1 — Back Cover



 Ensure the device is powered off.

- Use a PZ00 screwdriver bit to remove the eleven screws securing the back cover.
 - Five 7 mm screws
 - Six 4 mm screws

Step 2



- Carefully pry the back cover off the computer using an opening pick.
 - ① Start at the corner of the laptop and work your way around the side. Gently pull up on the cover until it detaches.

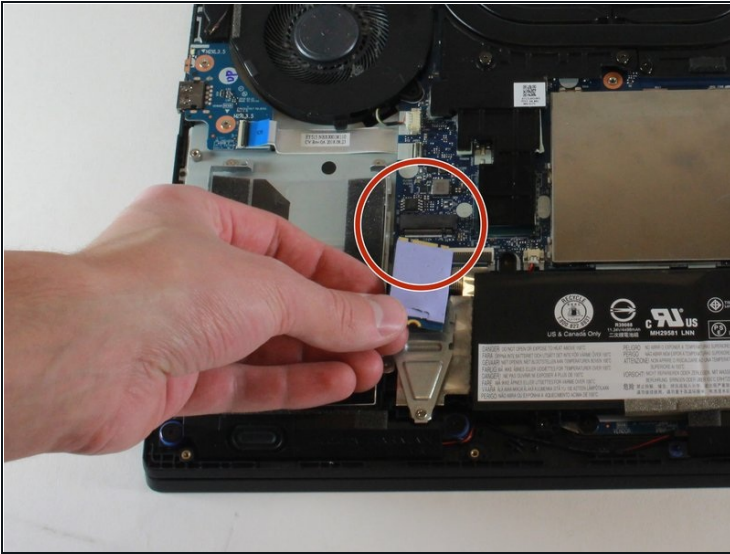
Step 3 — Solid State Drive



⚠ Do not remove the thermal pad.

- Remove one 4mm screw circled in orange in the second picture with a JIS #1 screwdriver.

Step 4



- Carefully remove the SSD from its connector.

Insert your new SSD into the connector. To reassemble your device, follow these instructions in reverse order.