



Acer TravelMate P653-V-6882 LCD Module Replacement

Replacement guide for the Acer TravelMate P653-V-6882's LCD module. Guide on removing the LCD module.

Written By: Daniel Popovic



INTRODUCTION

Dropping your laptop, on multiple occasions, increases the chance of the display to stop functioning. If you're facing this issue and your TravelMate's display does not light up after troubleshooting, the display may likely be damaged. This means that you will need to replace the LCD module.

Here is a guide on how to replace the Acer TravelMate P653-V-6882's LCD module. It is important to know that when you are replacing the LCD module, you must do a complete teardown of the device.



TOOLS:

- [Spudger](#) (1)
 - [ESD Safe Tweezers Blunt Nose](#) (1)
 - [Phillips #1 Screwdriver](#) (1)
 - [iFixit Opening Tools](#) (1)
-

Step 1 — Battery Pack



- Turn the computer over so the base is facing up.
- Slide the battery lock to unlock position.

Step 2



- Slide the battery release latch to the right.
- ⓘ The battery pack will pop out.

Step 3



- Lift the battery up.
- Pull out the battery.

Step 4 — ODD Module



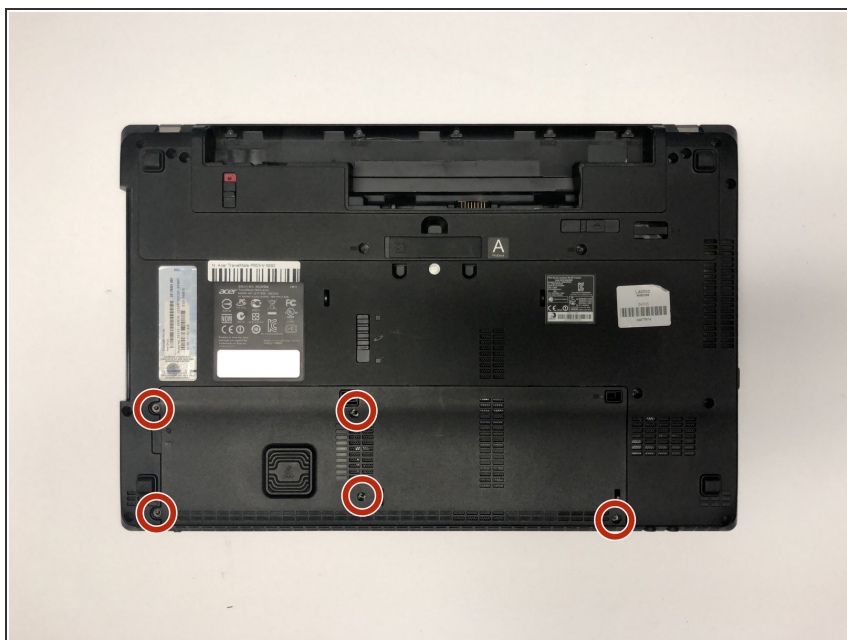
- Slide the ODD module latch down.
- ❗ The ODD module will pop out.

Step 5



- Remove the ODD module.

Step 6 — Base Door



- Remove the five 7mm Phillips #1 screws.

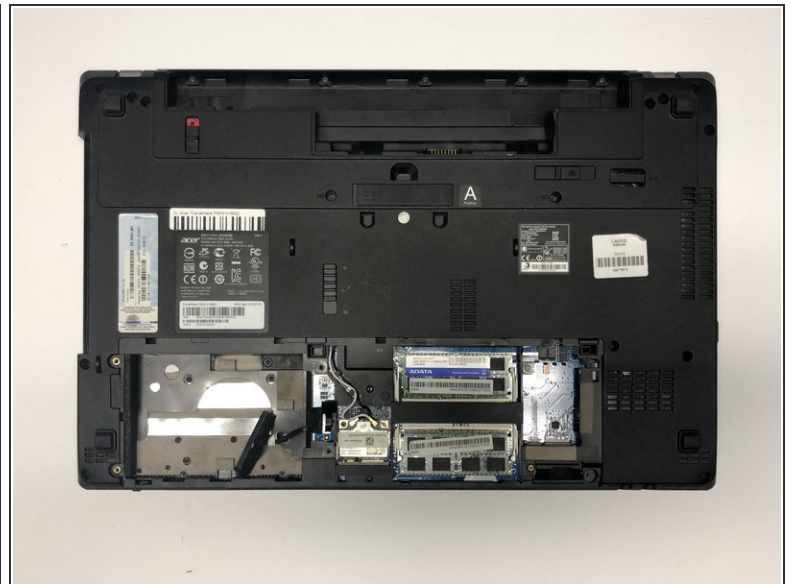
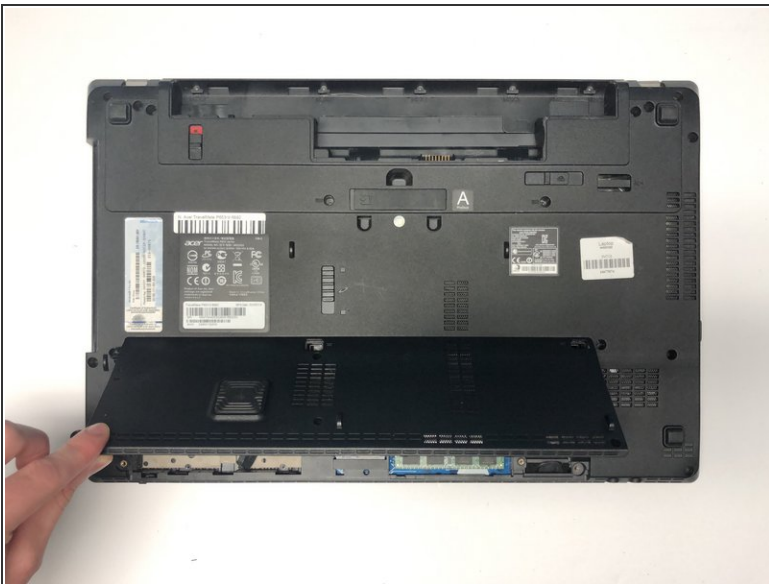
Step 7



- Use the opening tool to separate base door from the bottom of the laptop.

⚠ Be careful not to bend or crack the plastic back cover.

Step 8



- Gently pry open the base door by pushing up.
- Pull out the base door.

⚠ Be careful not to bend or crack the plastic back cover.

Step 9 — Keyboard



- Remove the two 7mm Phillips #1 screws.

Step 10



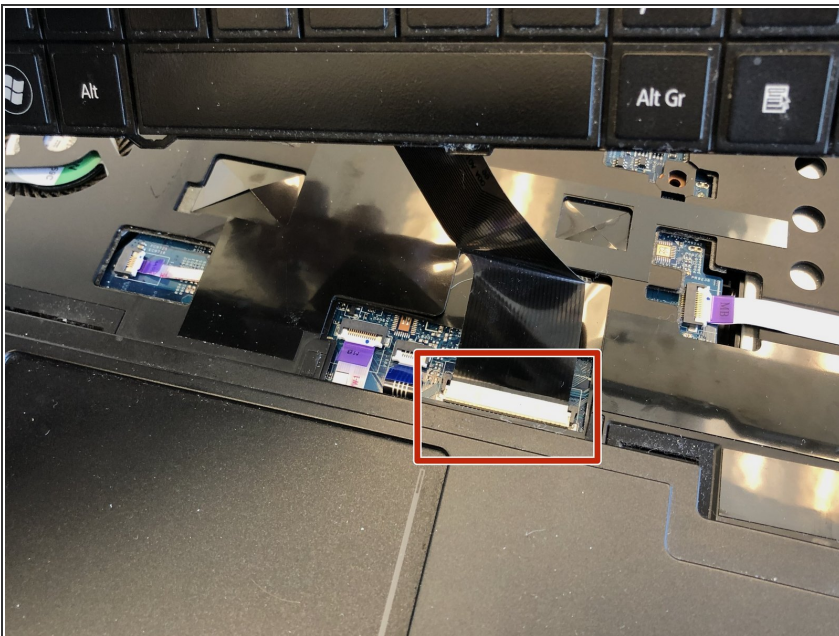
- Flip the laptop so that the underside is now facing the bottom.
 - Open the LCD panel.
 - Use the flat end of a spudger to push in the six latches.
- ⚠ Be careful not to bend or crack the keyboard.

Step 11



- When the latches are pushed in, the keyboard will pop out.
- Gently pry up the keyboard.
- ⚠ Be careful not to bend or crack the keyboard.

Step 12



- Slide the keyboard forward to access the keyboard cable.
- Flip the connector latch up to open it.
- Pull out the keyboard cable gently.
- ⚠ Be careful not to damage the connector.

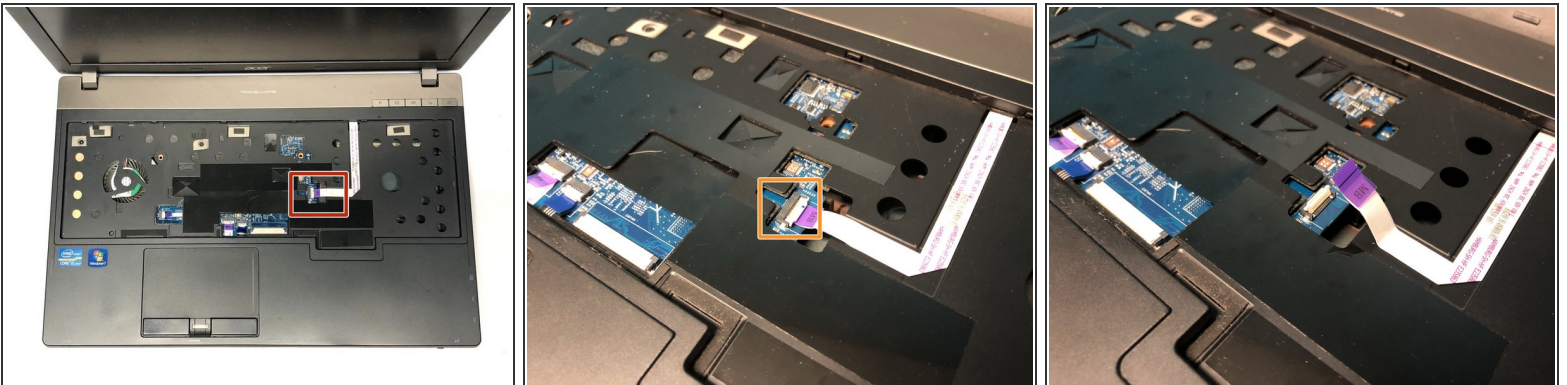
Step 13 — Mainboard



- Turn the computer over, open the LCD panel, and find the smart card cable connector.
- Open the smart card cable connector latch.
- Disconnect the cable.

⚠ Be careful not to damage the connector.

Step 14



- Find the power button launch board cable connector.
- Open the power button launch board cable connector latch.
- Disconnect the cable.

⚠ Be careful not to damage the connector.

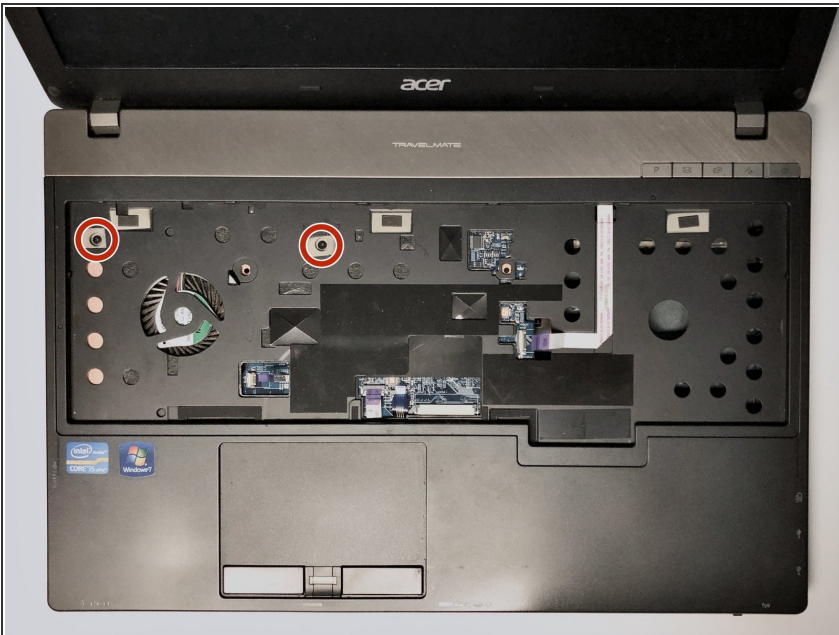
Step 15



- Find the touchpad and fingerprint board cable connector.
- Open the touchpad and fingerprint board cable connector's latches.
- Disconnect the cables.

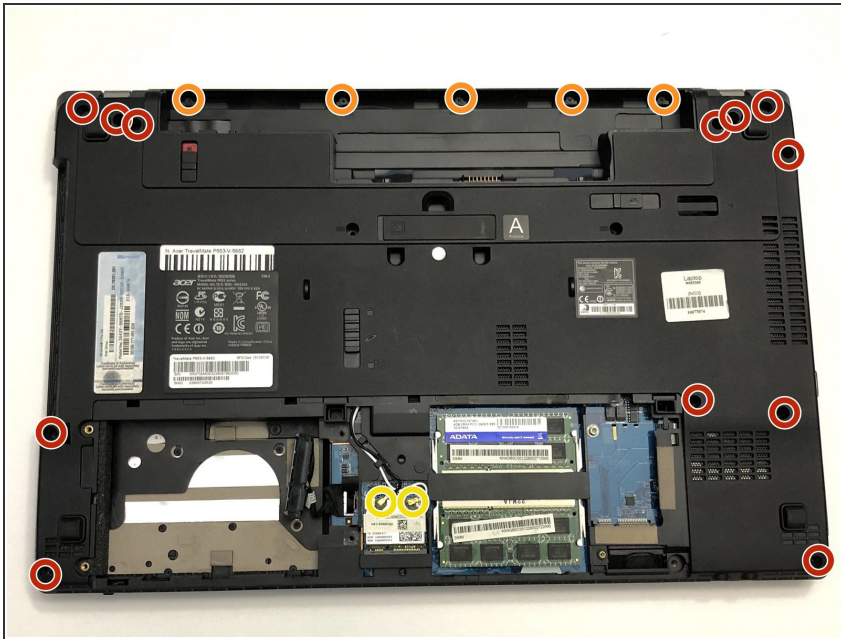
⚠ Be careful not to damage the connector.

Step 16



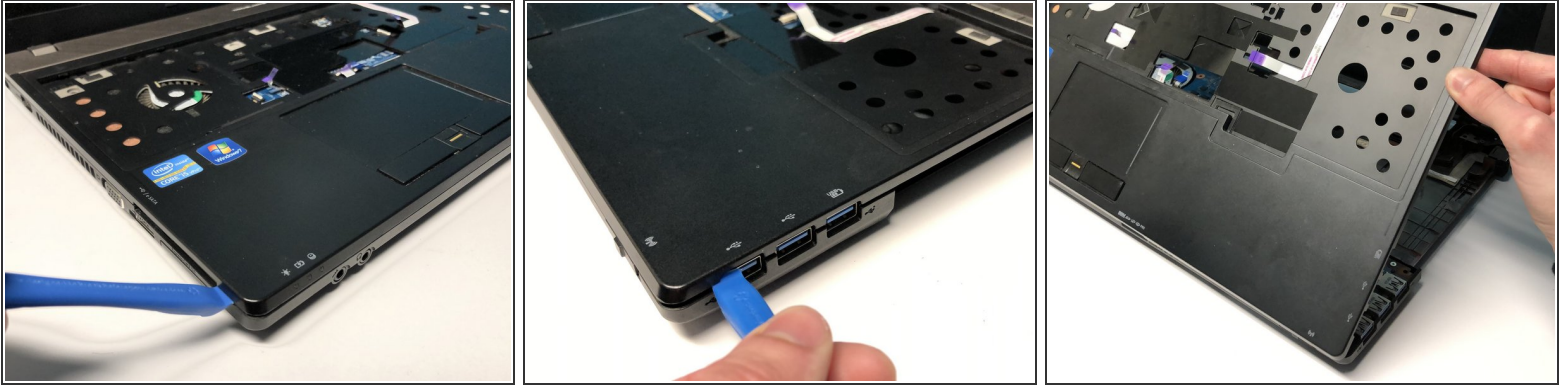
- Using the #1 Phillips screwdriver, remove the two screws.

Step 17



- Flip the laptop over so that the underside is facing up.
- Remove the twelve 7mm Phillips #1 screws.
- Remove the five 3mm Phillips #1 screws.
- Disconnect the cables connecting to the WLAN module.

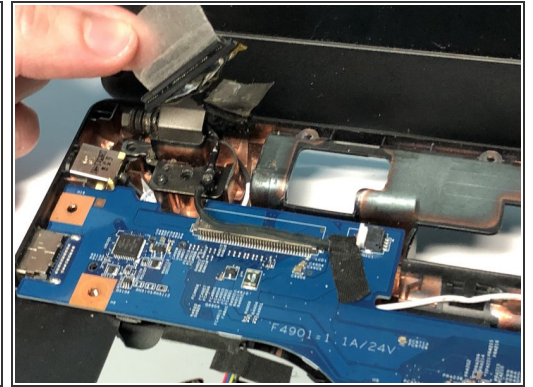
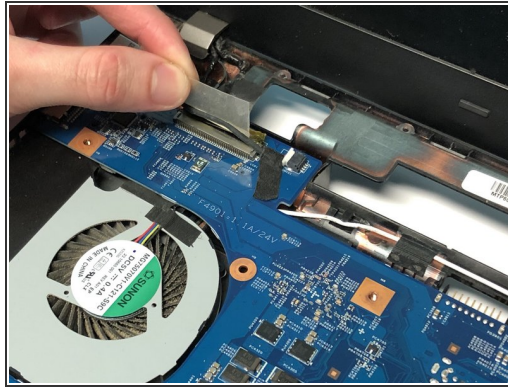
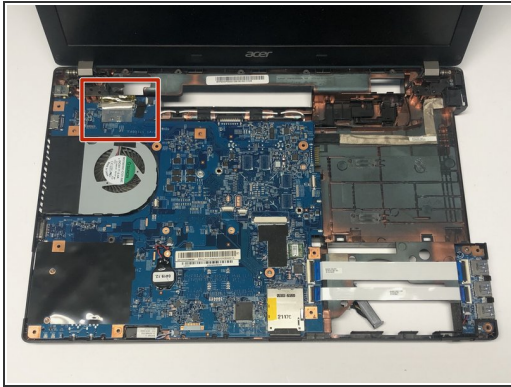
Step 18



- Flip the laptop so that the underside is now facing the bottom.
- Open the LCD panel.
- Locate the small gaps between the upper cover and lower case on the left and right side of the laptop.
- Insert the opening tool into each gap to separate the one from the other.
- Once the upper cover is separated, lift it from the lower case.

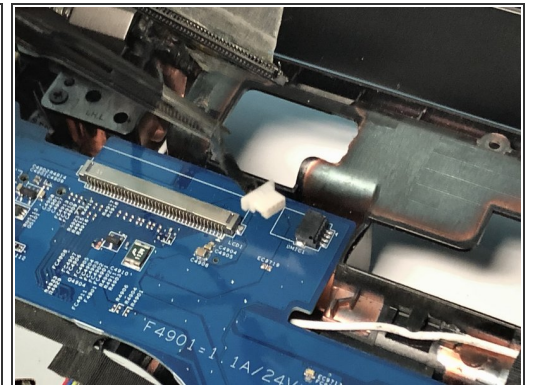
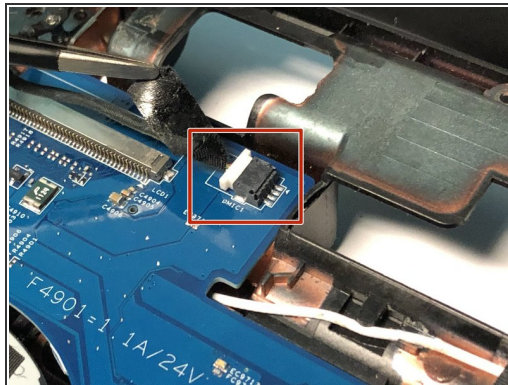
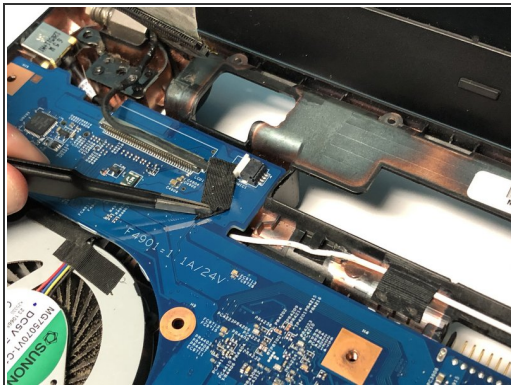
 Be careful not to damage the upper and lower case while removing.

Step 19



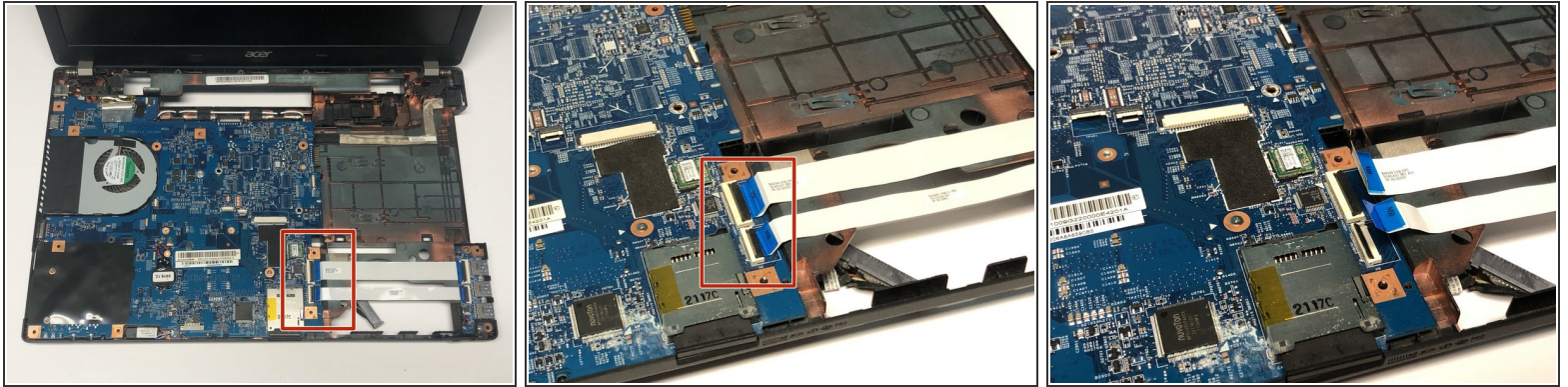
- Detach the transparent tape securing the LCD cable.
 - Disconnect the LCD cable from the mainboard.
- ⚠ Be careful not to damage the LCD cable connector.

Step 20



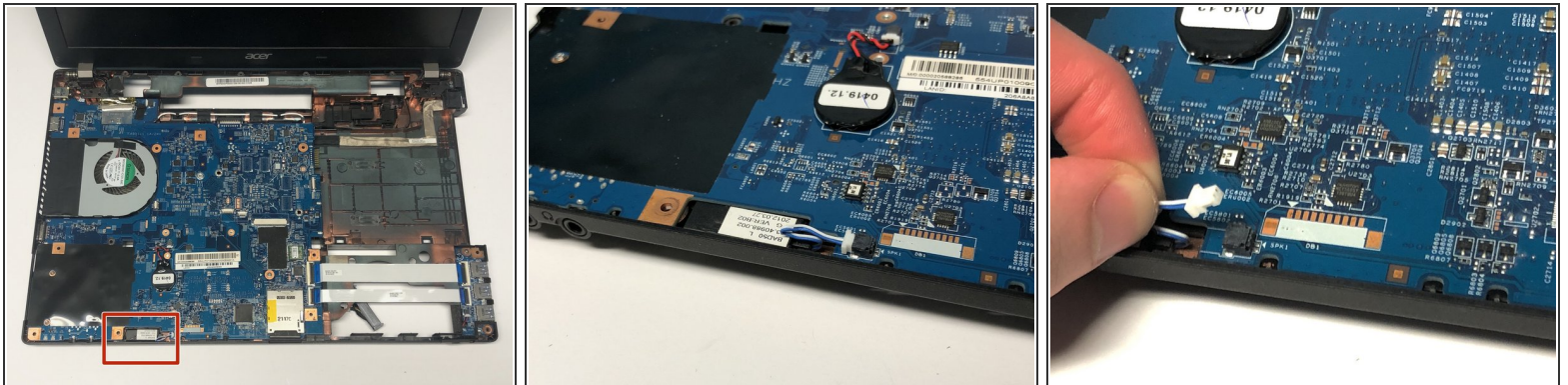
- Detach the black tape covering the microphone cable.
- Disconnect the microphone cable from the mainboard.

Step 21



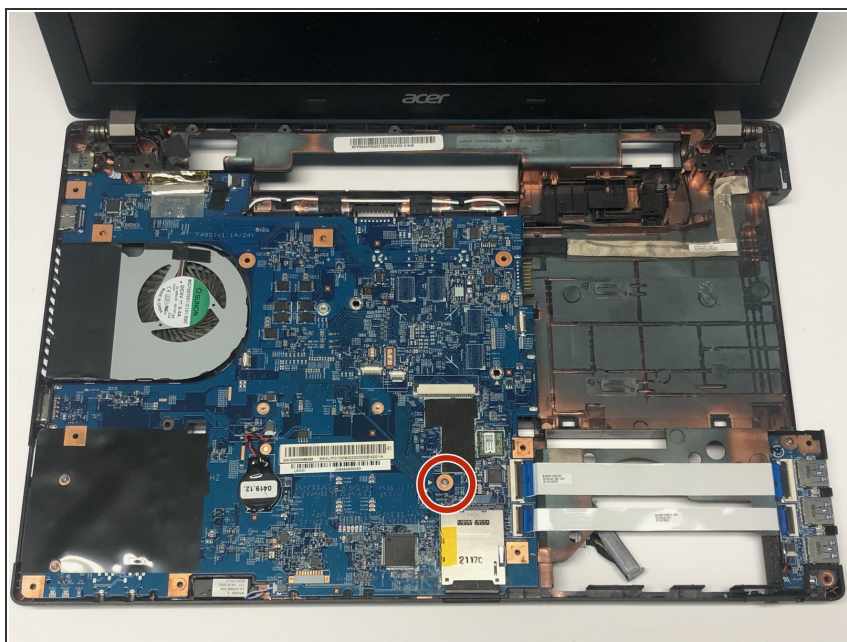
- Open the USB board cable's connector latches.
 - Disconnect the cables.
- ⚠ Be careful not to damage the connectors.

Step 22



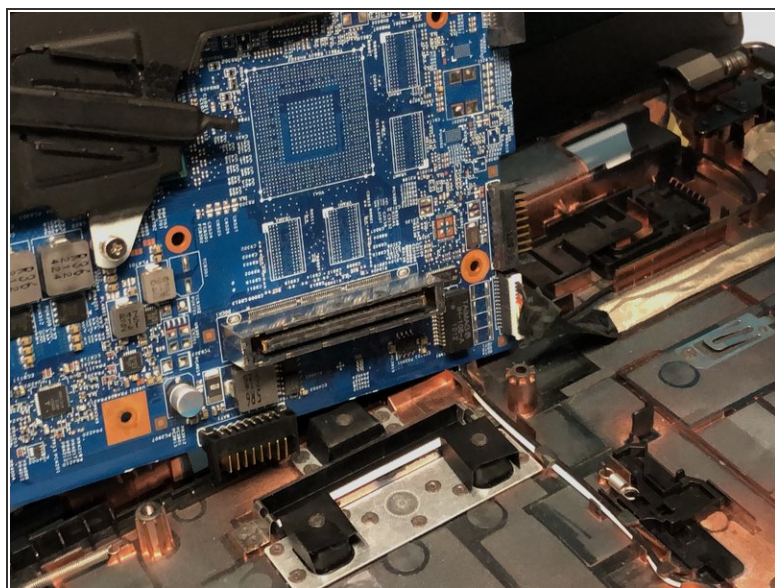
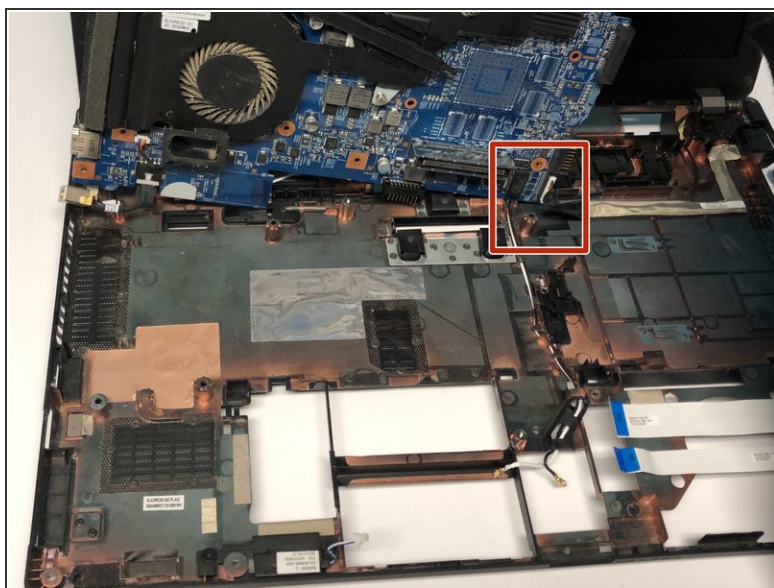
- Disconnect the left speaker cable from the mainboard.

Step 23



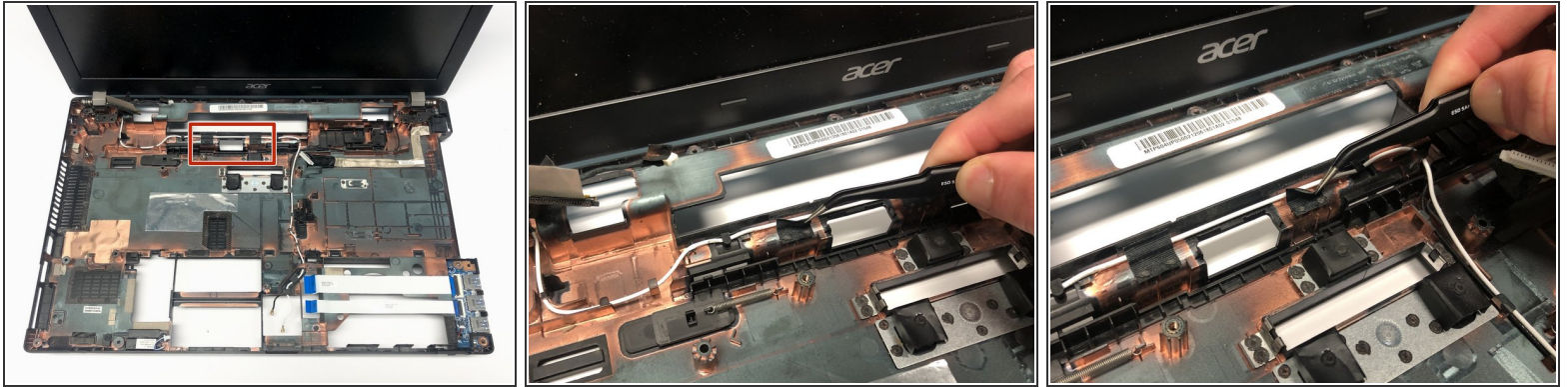
- Remove the one 7mm Phillips #1 screw.

Step 24



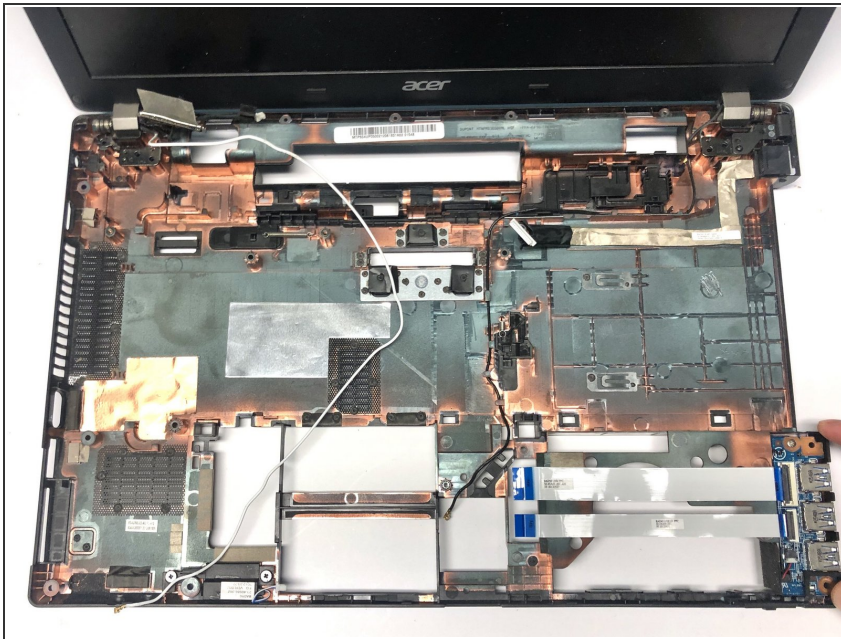
- Lift the mainboard at an angle and gently turn it on its side.
- Disconnect the LAN cable from the mainboard.

Step 25 — LCD Module



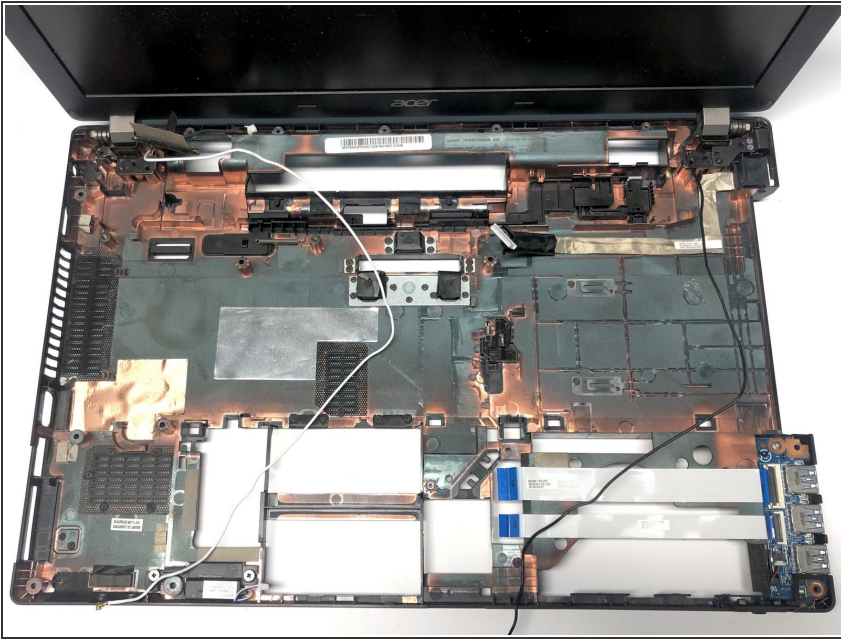
- Carefully remove the two pieces of black tape securing the antenna cables to the lower case using tweezers.

Step 26



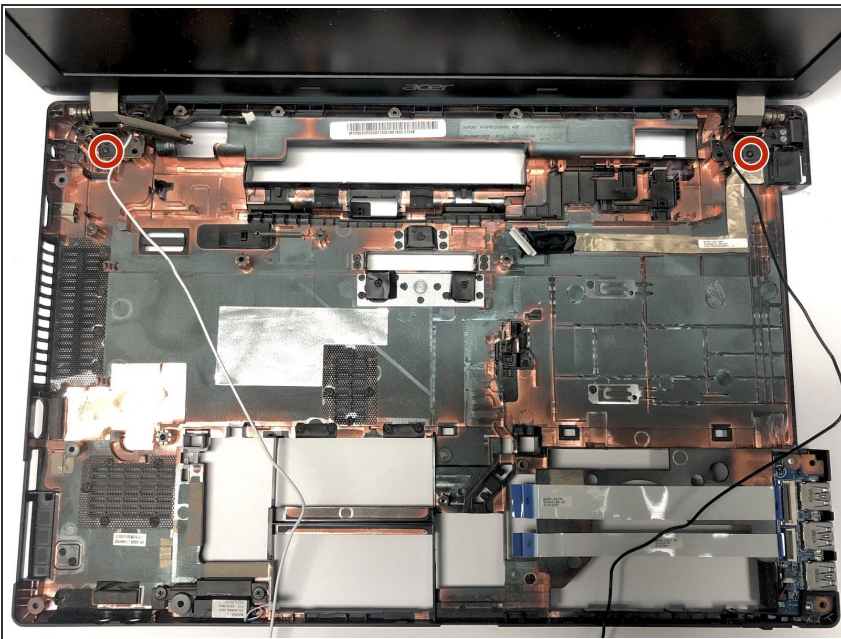
- Release the white antenna cable from its top side latches.
- ⚠ Be careful not to damage the cable.

Step 27



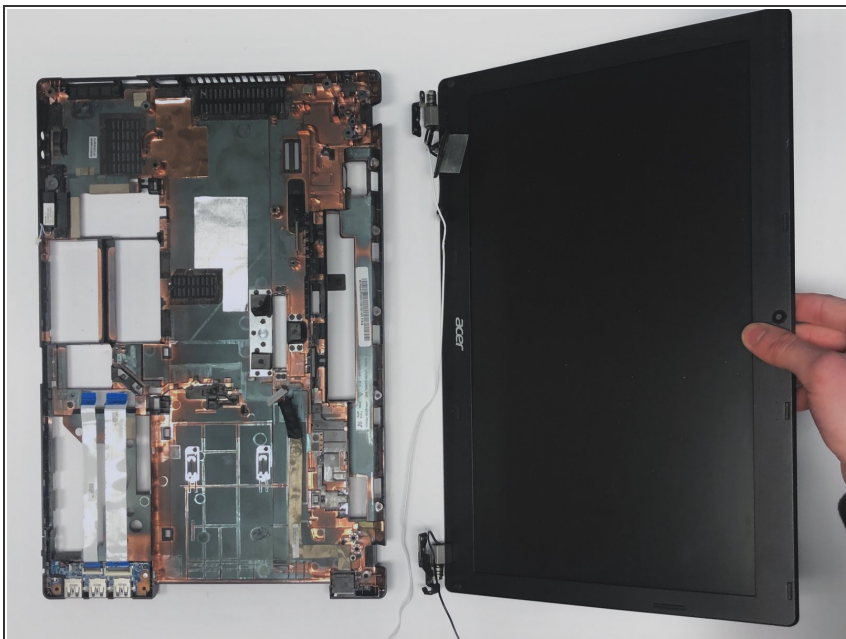
- Release the black antenna cable from its top side latches.
- ⚠ Be careful not to damage the cable.

Step 28



- Remove the two 7mm Phillips #1 screws.
- ⚠ Make sure to hold onto the LCD module when removing the screws as the display may fall back.

Step 29



- Carefully remove the LCD module from the lower case.

To reassemble your device, follow these instructions in reverse order.