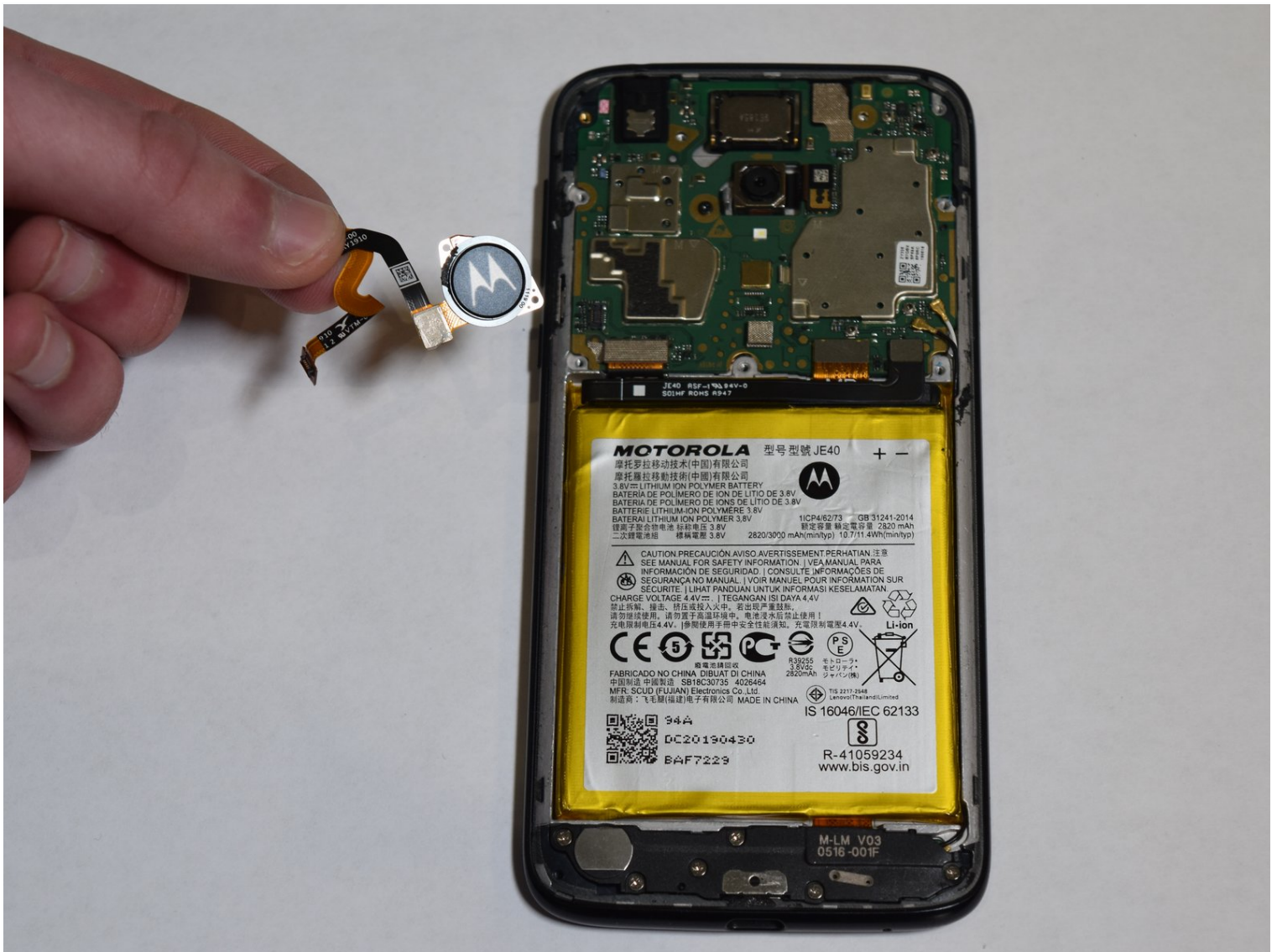




Motorola Moto G7 Play Fingerprint Sensor Replacement

This is a fingerprint scanner replacement guide...

Written By: Monserath Casillas



INTRODUCTION

This is a fingerprint scanner replacement guide for the Motorola Moto G7 Play, specifically the XT1952-3 and XT1952-2. The fingerprint is an important feature for the device, as it helps provide extra security to keep files safe. If the device no longer unlocks when the sensor is touched, then it should be replaced.

Before you begin, download the [Rescue and Smart Assistant](#) app to backup your device and diagnose whether your problem is software or hardware related.

TOOLS:

[iFixit Opening Picks \(Set of 6\)](#) (1)


[iFixit Opening Tool](#) (1)

[Phillips #00 Screwdriver](#) (1)

Step 1 — Back Cover



 Turn off your device before you begin.

- Use the iFixit pick to break the adhesive around the back case.
-  Use a heat gun, hairdryer, or iOpener to weaken the adhesive around the back case. If you're using the iOpener, please review the [instructions](#) for proper use.

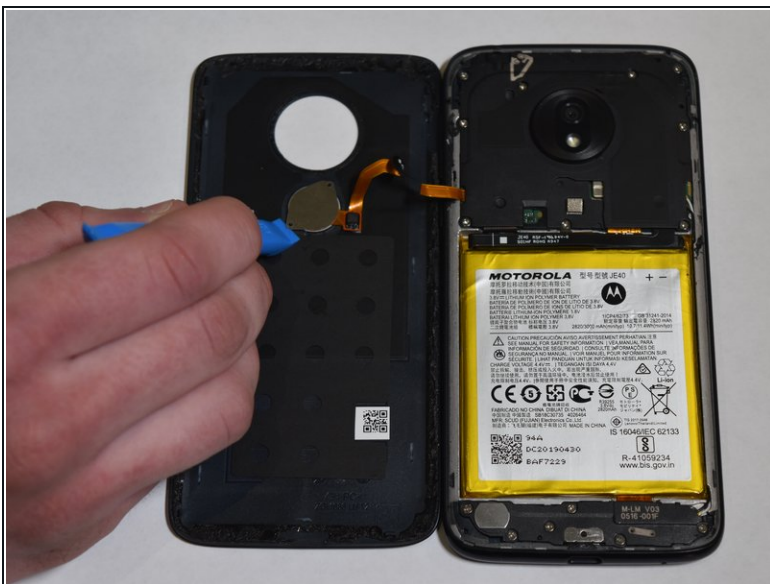
Step 2



- Detach the back case from the phone.

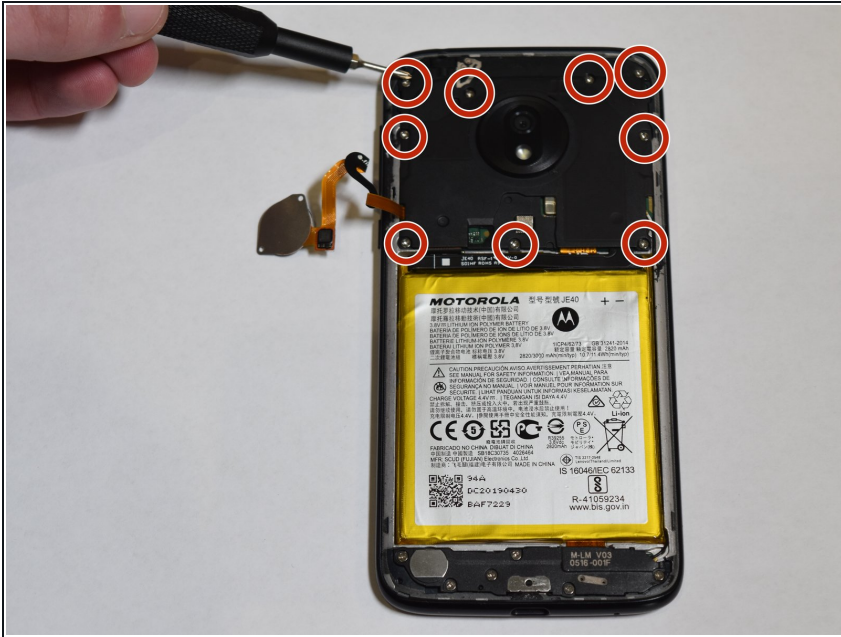
⚠ Make sure the back is opened right to left so the cable of the fingerprint scanner does not get damaged.

Step 3



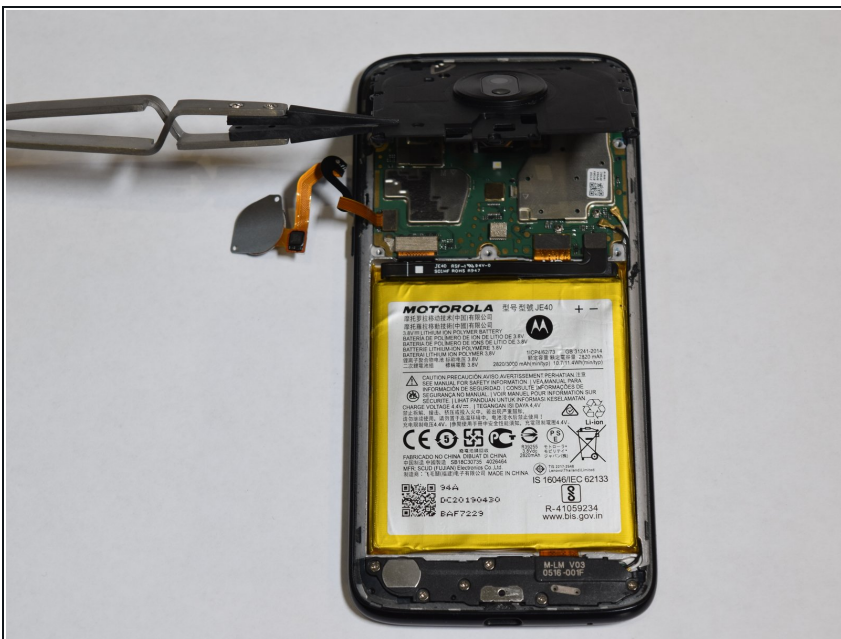
- Use the iFixit pick and the iFixit opening tool to pull the fingerprint scanner off of the back case.

Step 4 — Fingerprint Sensor



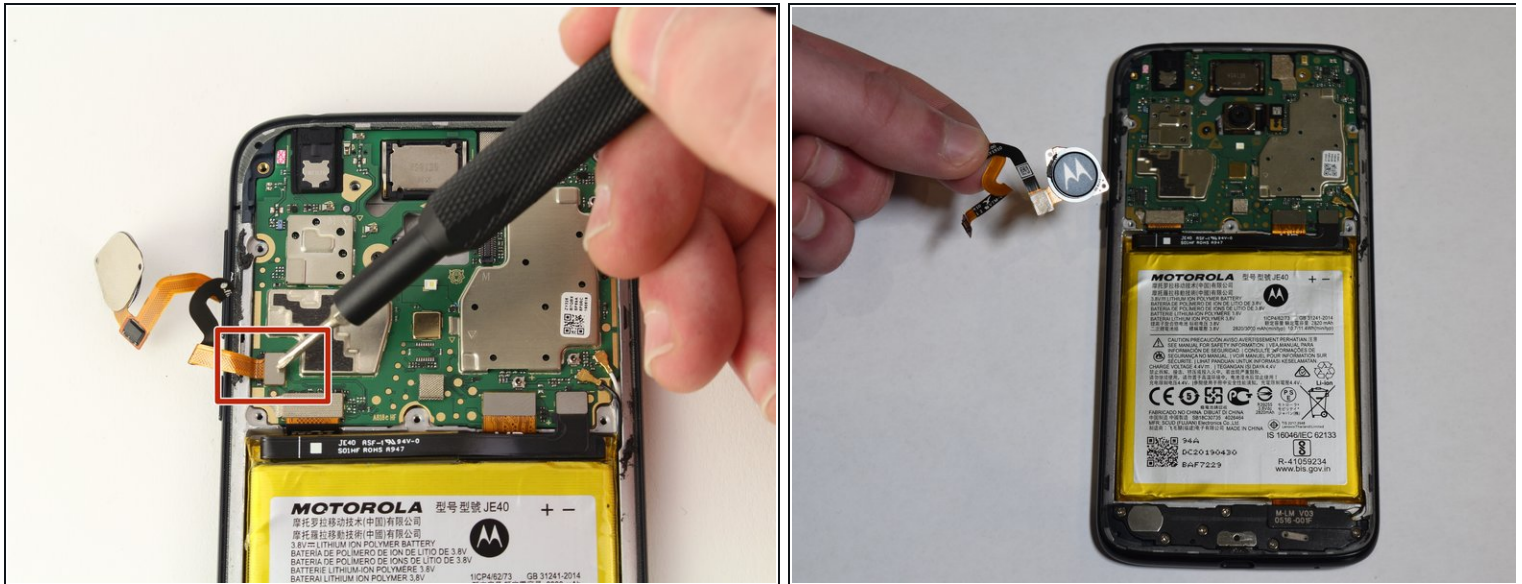
- Remove the nine 3.2 mm screws from the motherboard cover with a Phillips #00 screwdriver.

Step 5



- Lift motherboard cover from the bottom.
- ① Use reverse tweezers or a similar tool if needed

Step 6



- Using the iFixit opening tool, carefully disconnect the ribbon cable connecting the fingerprint scanner to the motherboard.
- Remove the fingerprint scanner from the device.

To reassemble your device, follow these instructions in reverse order.