



Lenovo Thinkpad Twist s230u Battery Replacement

This guide will help you remove the battery...

Written By: Arthur McPeak



INTRODUCTION

This guide will help you remove the battery from your Lenovo Thinkpad Twist s230u. The battery provides power to the computer and can be recharged, but it can lose its capacity to hold charge over time. In rare cases, the battery can even be defective straight out of the box. Whatever the reason, if you need to replace your battery or you need to remove it for another replacement, this guide is for you. For more information on ways to fix problems you may have, visit our [troubleshooting page](#).

🔧 TOOLS:

Phillips #1 Screwdriver (1)
iFixit Opening Tool (1)
Metal Spudger (1)

⚙️ PARTS:

45N1169 - Lenovo Laptop Battery - Genuine (1)

Step 1 — Hard Drive



- Flip the laptop over.
- Using a Phillips #1 Screwdriver, unscrew the screw on the bottom left corner.

Step 2



- Using the iFixit Opening tool, loosen the hard drive cover.

Step 3



- Remove the hard drive cover.

Step 4



- Remove the hard drive by sliding it out.

Step 5 — Keyboard



- Use a Philips #1 screwdriver to remove 2 screws on the bottom of the laptop.

Step 6



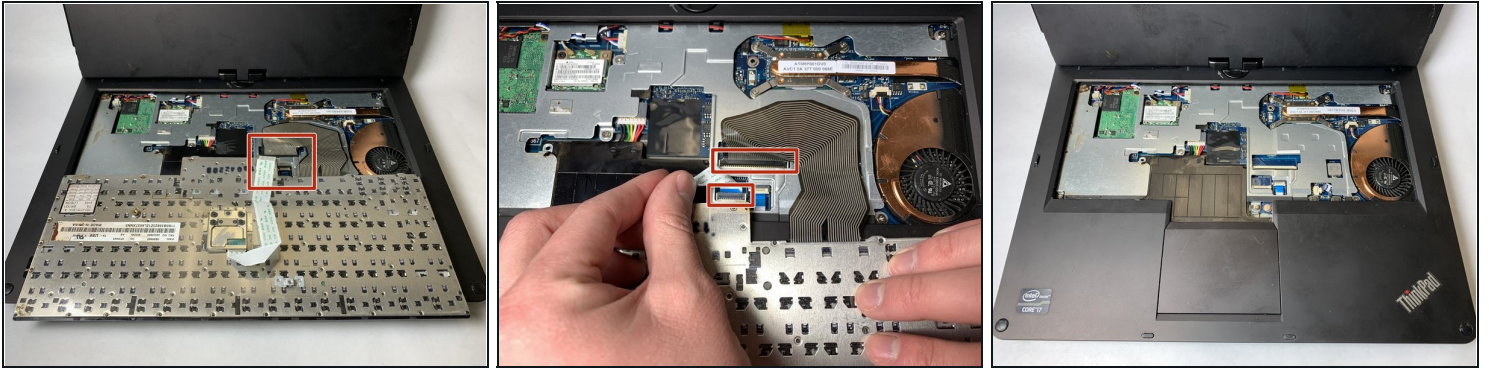
- Use a spudger to loosen the keyboard around the edges.
- Carefully push the keyboard towards the screen to unlatch it.
- ① Do not push too hard, as there are ribbon cables attached to the keyboard.

Step 7



- Carefully lift up the keyboard to access the wires underneath.
- ① Be careful not to break the ribbon cables attached underneath.

Step 8



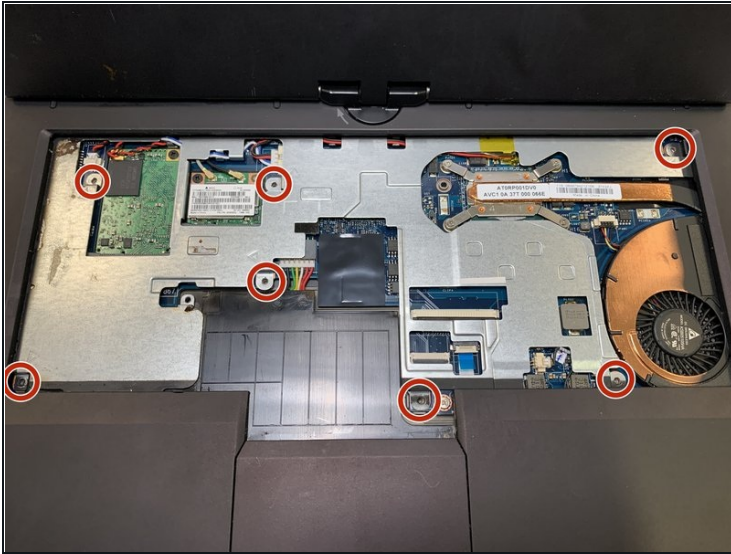
- Open the small black flap on each of the ribbon cables. It should lift with a slight effort.
- Pull out the ribbon cables and remove the keyboard from the device.

Step 9 — Upper Casing



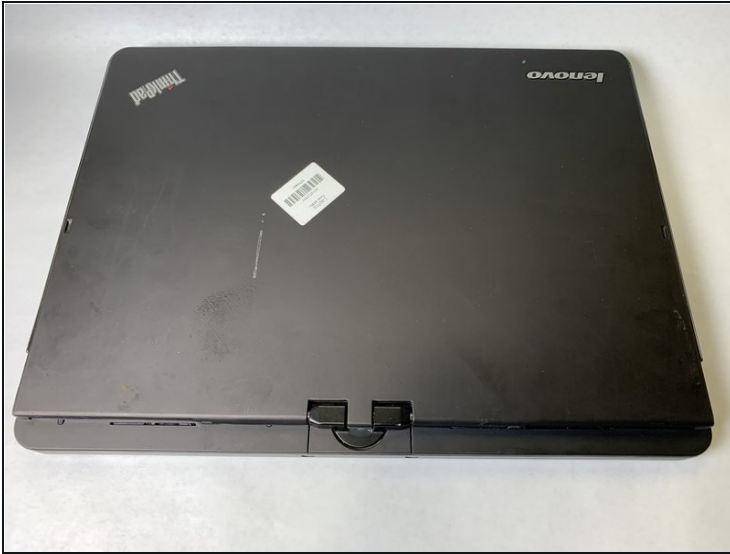
- Flip your device over.
- Use the Phillips #1 screwdriver to remove the nine screws.

Step 10



- Flip the device back over and open the top.
- Use the Phillips #1 screwdriver to remove the seven silver screws.
- Disconnect the three cables inside the case.
- Lift up the brown tab and disconnect the ribbon cable.

Step 11



- Close the lid and turn the device around.
- Use the iFixit Opening Tool to lift up and remove the tab on the back.

Step 12



- Turn the device back around and reopen it.
- Use the iFixit Opening Tool to disconnect the top of the case from the bottom.
- Lift up the top of the case and slide it out from under the screen.

Step 13 — Battery



- Remove the single silver screw using the Phillips #1 screwdriver.

Step 14



- Unplug the colored cables.

Step 15



- Lift the battery out of the laptop.

To reassemble your device, follow these instructions in reverse order.