



# Motorola Moto E6 Play Battery Replacement

The Motorola Moto E6 Play phone runs on a 3000...

Written By: Andy Cristales



# INTRODUCTION

The Motorola Moto E6 Play phone runs on a 3000 mAh rechargeable battery. If the phone will not power on, there may be an issue with the battery. Before attempting this guide, click [here](#) for troubleshooting issues with the device not powering on. Before beginning any repairs, remember to completely turn off the phone, and check for signs of a [swollen battery](#), which is chemically hazardous and can cause fires if improperly dealt with.

Before you begin, download the [Rescue and Smart Assistant](#) app to backup your device and diagnose whether your problem is software or hardware related.

## TOOLS:

[Phillips #0 Screwdriver](#) (1)

[Halberd Spudger](#) (1)

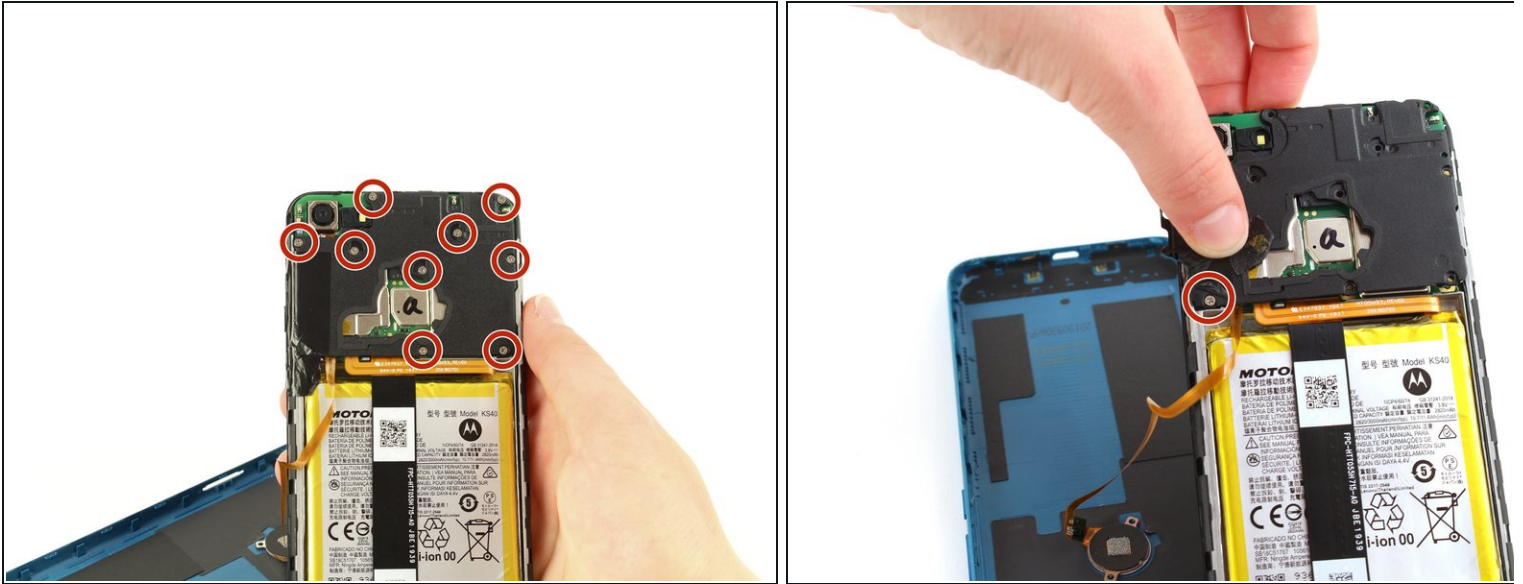
### Step 1 — Back Cover



- Run the halberd spudger along the edges of the device. The back cover should easily pop off.

 Gently remove the back cover. Do not pull hard, as it is still connected to the fingerprint scanner inside the phone.

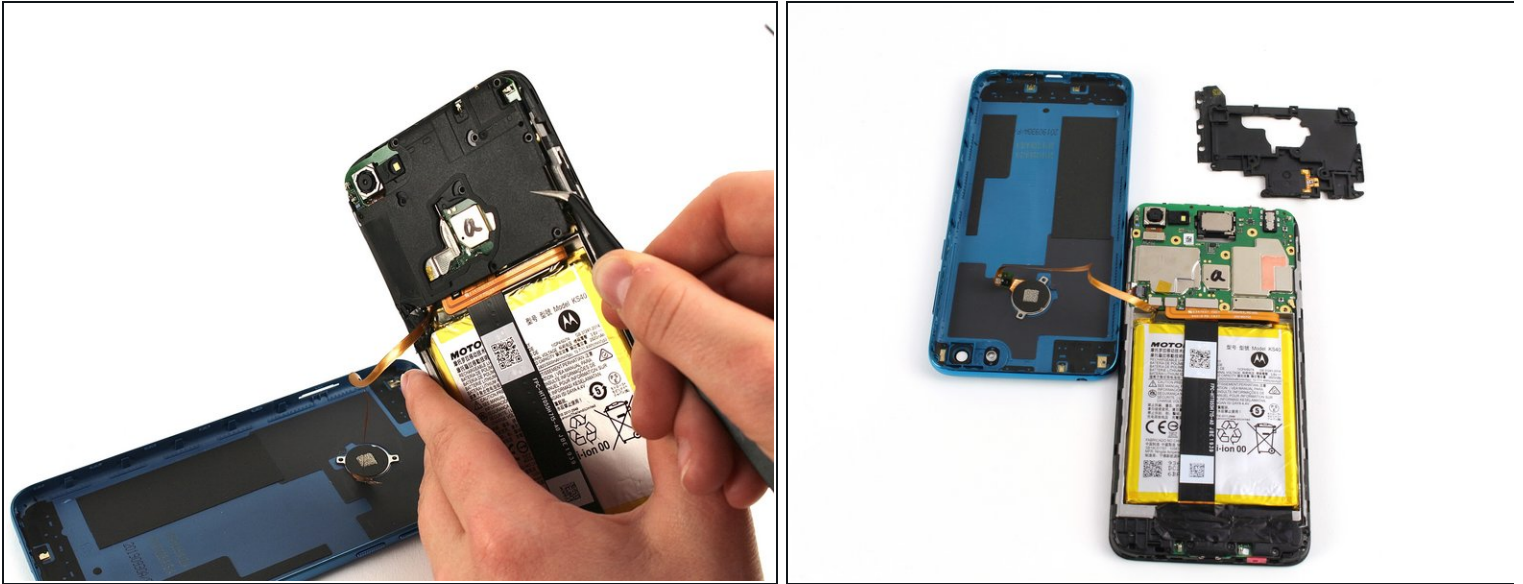
## Step 2 — Circuit Board Covers



- To remove the cover on the motherboard, remove the 10 silver 3.90 mm Phillips screws attaching the cover to the board using the Phillips #0 screwdriver.
- ⓘ One of these ten screws is covered by black tape located at the bottom left corner of the black cover. Peel back the black tape to access this screw.



## Step 3



- With the angled tweezers, remove the black cover to reveal the motherboard underneath.

⚠ Remove the black piece cover with caution to avoid puncturing the motherboard with the tweezers.

## Step 4



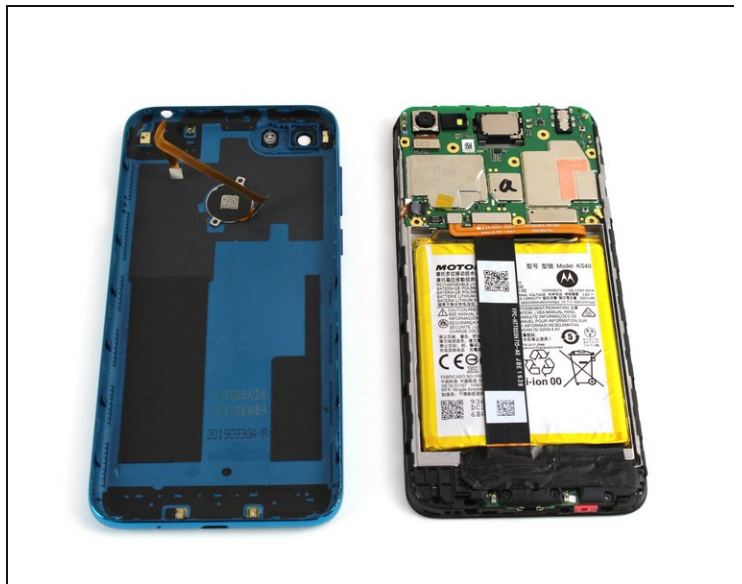
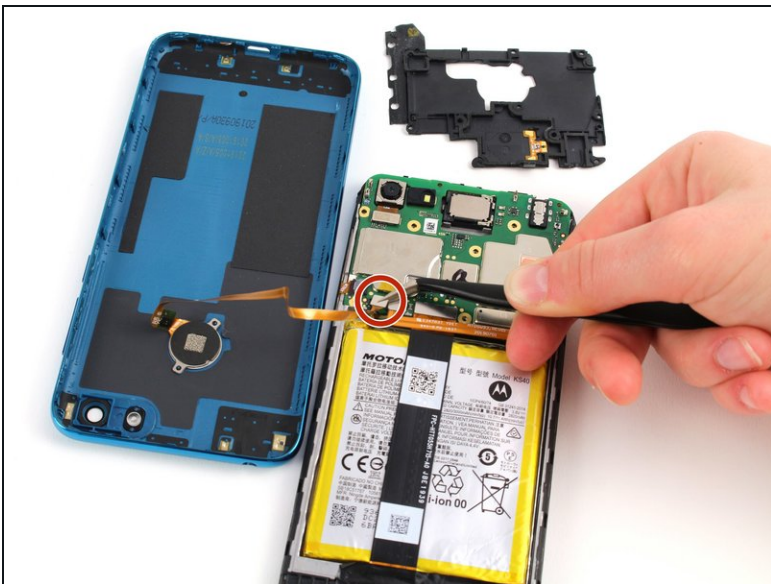
- The bottom plastic piece covering the daughterboard can be seen by peeling back the tape covering the bottom section of the phone below the battery.
- To remove the cover, unscrew the six black 3.45 mm Phillips screws holding the cover in place using the Phillips #0 screwdriver.

## Step 5



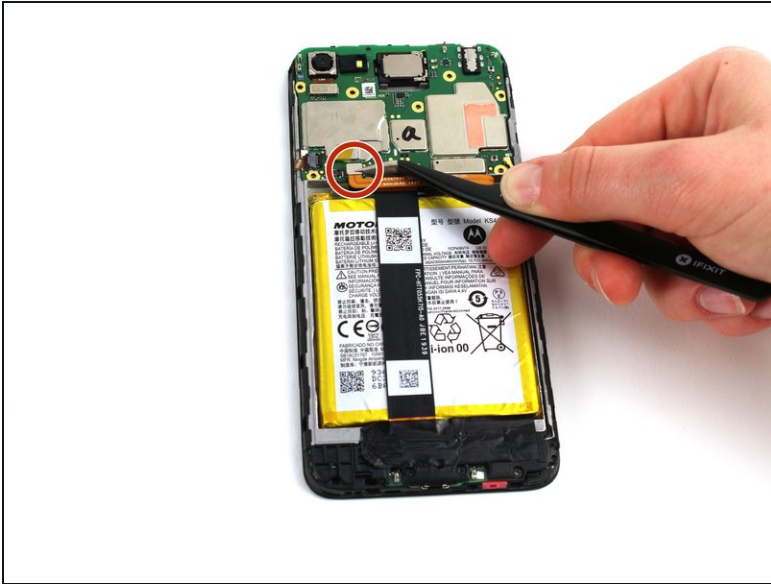
- Remove the black cover piece using the angled tweezers.

## Step 6 — Battery



- With the angled tweezers, detach the fingerprint scanner connector from the motherboard by pulling the metal head up and away from the phone.

## Step 7



- With the angled tweezers, remove the horizontal and vertical connectors that link the battery to the motherboard together by pulling the metal heads on the connectors.



## Step 8



- Remove the battery by inserting the spudger under the battery and gently pulling it up from the device.
- Continue to push the spudger towards the center of the compartment holding the battery, and gently pry the battery away from the device.

**⚠ In this image, the metal spudger is used. However, you should NOT use a metal spudger to remove the battery. Use the plastic spudger instead, as this is less likely to puncture the battery.**

**ⓘ In these images, both circuit boards are removed, but this isn't necessary to remove the battery.**

To reassemble your device, follow these instructions in reverse order.