



# iRobot Braava Jet 240 Back Shell Replacement

Use this guide to replace the back shell of your iRobot Braava Jet 240, model number: B240020.

Written By: Claire Franz



# INTRODUCTION

The back shell of the iRobot Braava Jet 240 covers the device's water tank. Therefore, in order to remove the water tank, the back shell must first be removed. Follow this guide to replace the back shell.



## TOOLS:

- [iFixit Opening Tools](#) (1)
  - [Phillips #1 Screwdriver](#) (1)
-

## Step 1 — Battery



- Turn the device off.

## Step 2



- Use your fingers to gently pop out the battery.

### Step 3 — Mop Pad



- Lift up the handle to reveal the eject button.

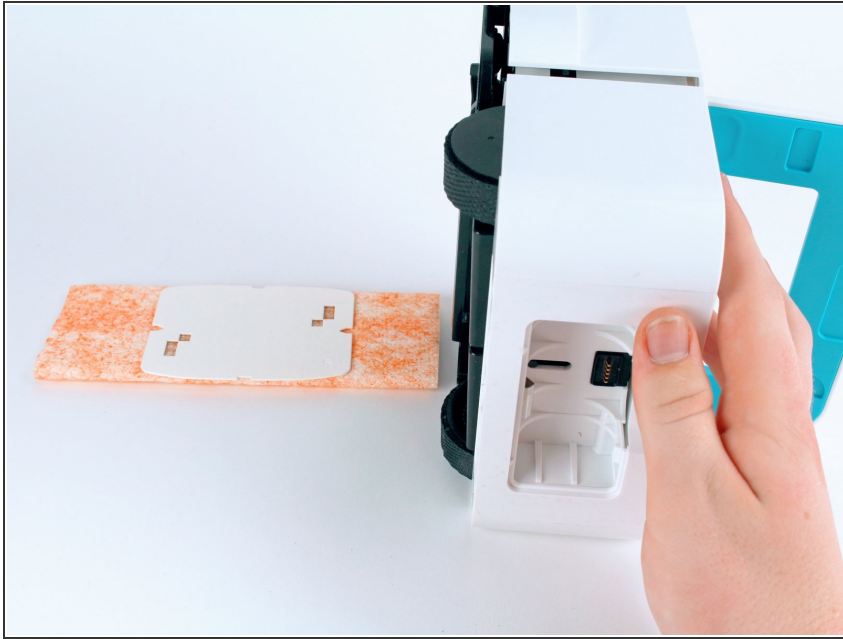
### Step 4



- Use your finger to push the eject button forward.

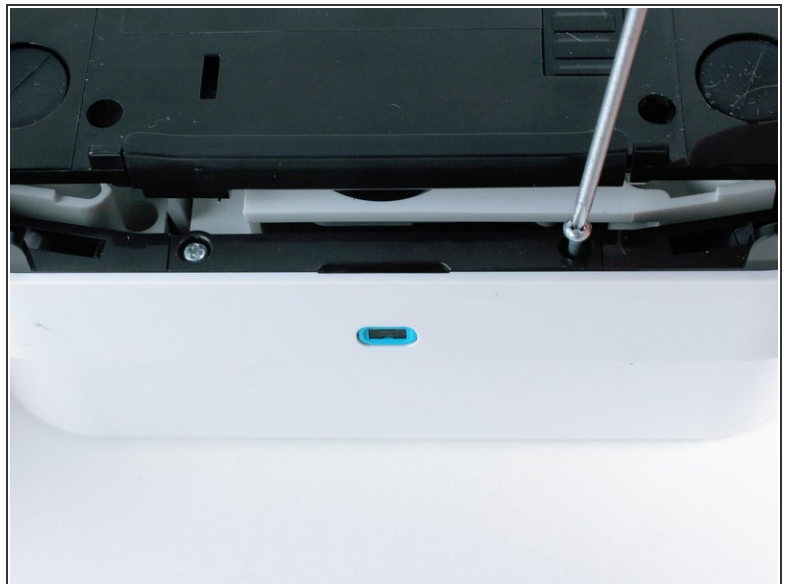
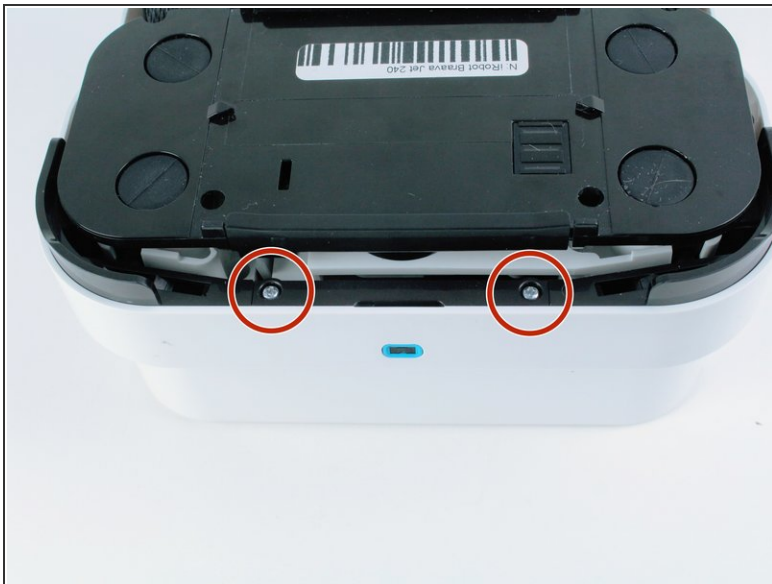


## Step 5



- Tilt the robot on its side and let the mop pad slide out.

## Step 6 — Front Shell



- Remove the two 22.0 mm screws on the bottom-front of the robot using a Phillips #1 screwdriver.

## Step 7



- Use a Phillips #1 screwdriver and an iFixit opening tool to remove the two 15.0 mm screws on the front sides of the robot.

## Step 8



- Carefully pull back on the front shell to remove it from the robot.

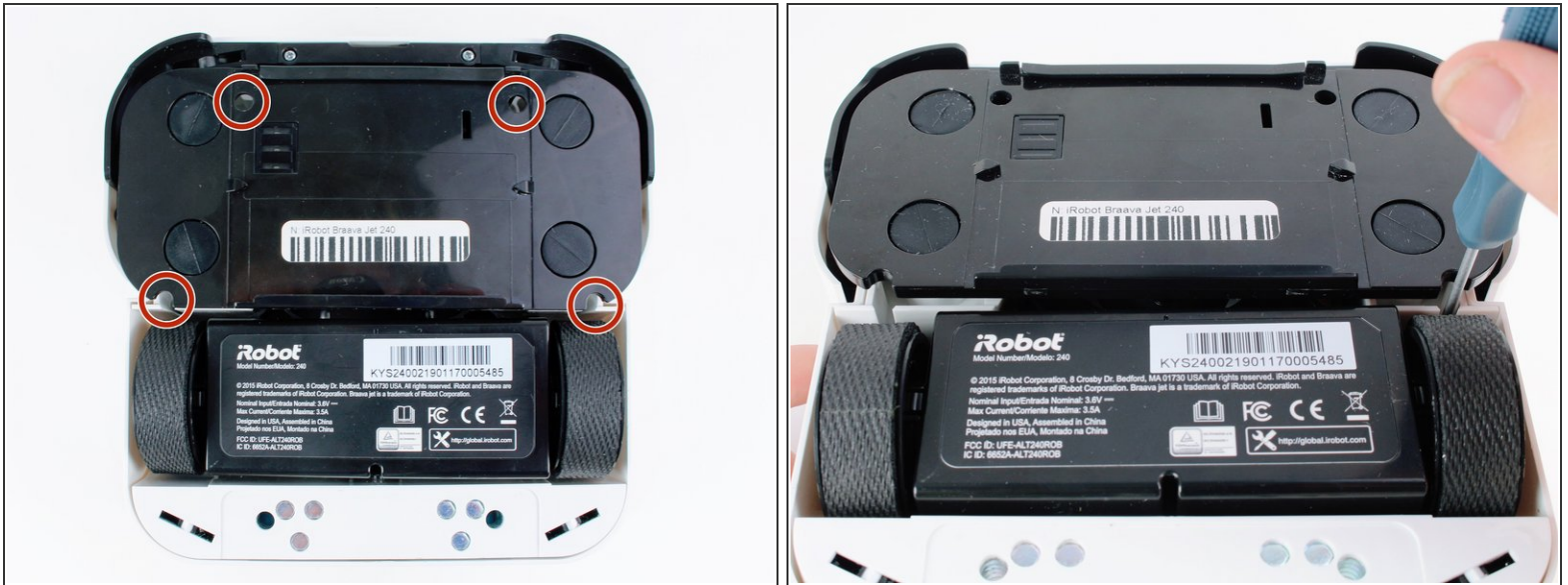
## Step 9 — Back Shell



- Insert a Phillips #1 screwdriver through the screw holes.
- Unscrew the two 9.7 mm screws.



## Step 10



- Unscrew the four 9.7 mm screws using a long neck #1 Phillips screwdriver.
- ⓘ If the screws are unscrewed but do not come out easily, turn the robot upside down and gently shake it.

## Step 11



- Pull up on the back shell to remove it from the robot.
- ✦ For reassembly, pop the mop pad release trigger back into place if it fell out during back shell removal.



To reassemble your device, follow these instructions in reverse order.