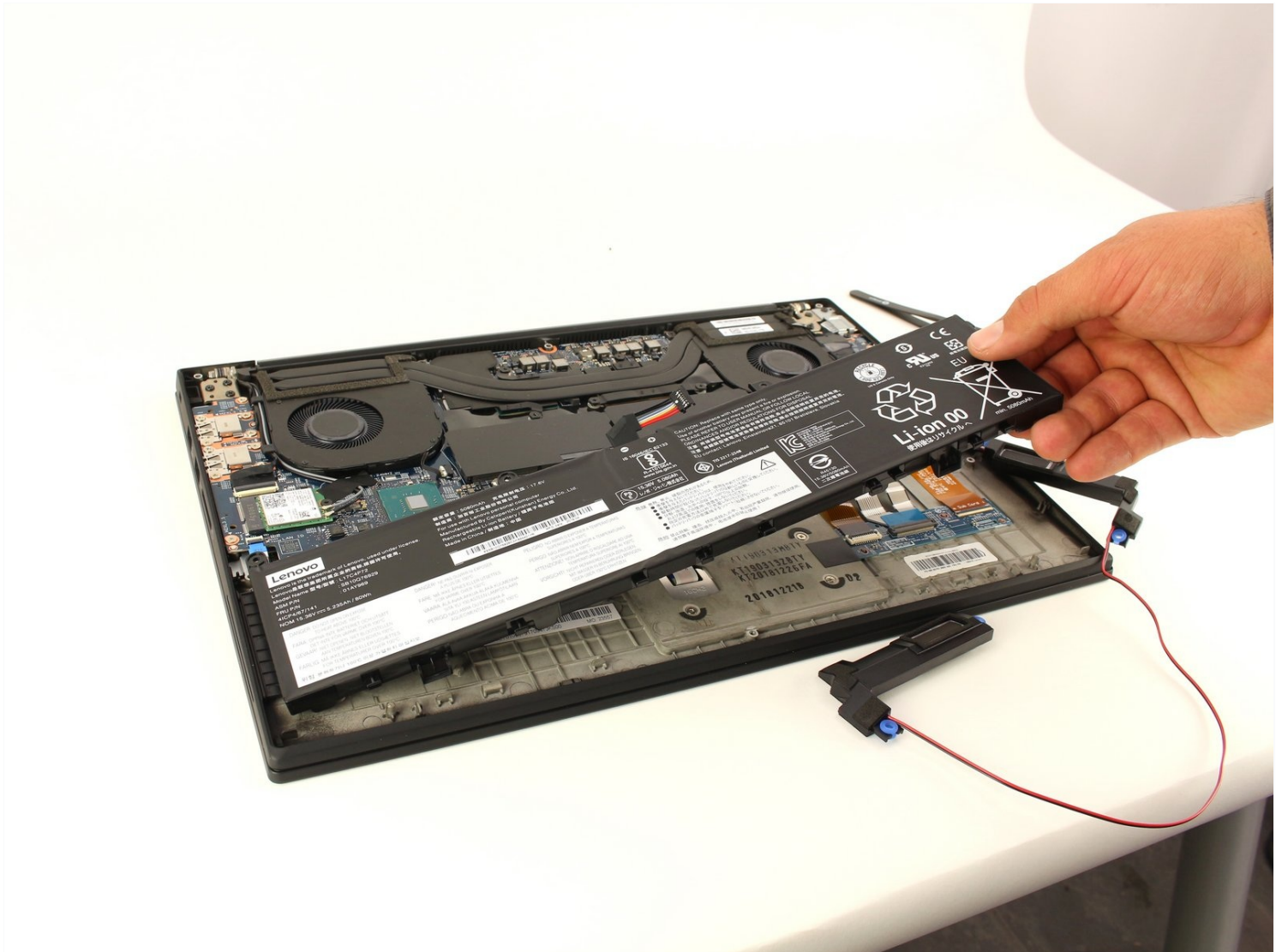




# Lenovo ThinkPad X1 Gen 1 Extreme Battery Replacement

If your Lenovo ThinkPad X1 Gen 1 Extreme (model...

Written By: Beckham Richmond



# INTRODUCTION

If your Lenovo ThinkPad X1 Gen 1 Extreme (model number 20MF-000LUS) is having trouble charging, overheating, or not holding a charge, use this guide to replace the battery pack.

A battery in good condition will power the computer for 15 hour periods and charge to 80% capacity in an hour. A faulty battery will not charge properly and will lose power quicker than expected.

Before replacing the battery, refer to the [trouble shooting page](#) for the Lenovo ThinkPad Gen 1 Extreme to see if the problem is fixable without purchasing and installing another battery.

Please keep in mind that a [swollen lithium ion battery](#) is dangerous and read the page attached to the link before repair. Be sure to disconnect the computer from any power and turn the computer completely off. It is also important to be careful when removing the battery; any damage can easily make the computer not functional.



## TOOLS:

[iFixit Opening Tool](#) (1)  
[Phillips #00 Screwdriver](#) (1)  
[iFixit Opening Picks \(Set of 6\)](#) (1)  
[Tweezers](#) (1)

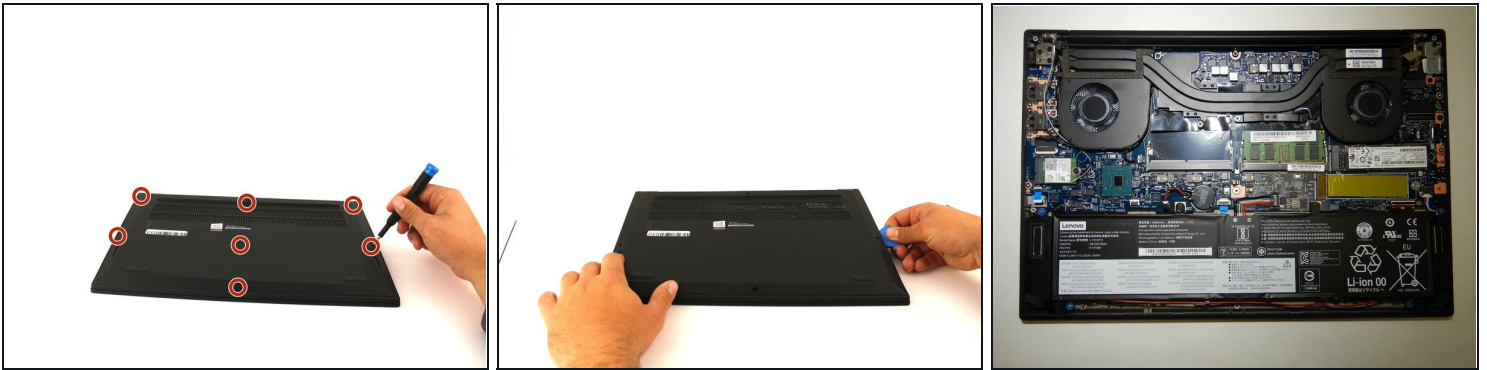


## PARTS:

[Lenovo ThinkPad P1 and X1 Extreme Battery](#) (1)

---

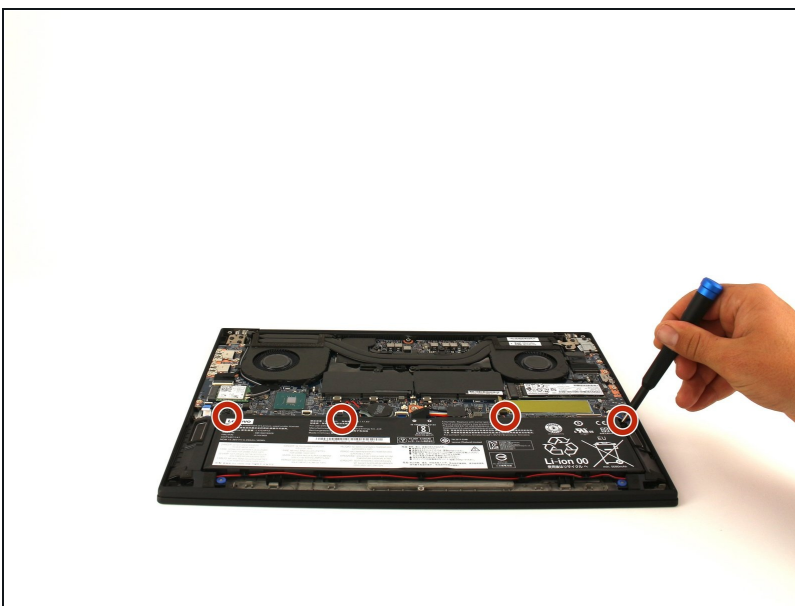
## Step 1 — Back Cover



**⚠ Power off and unplug your device before you begin.**

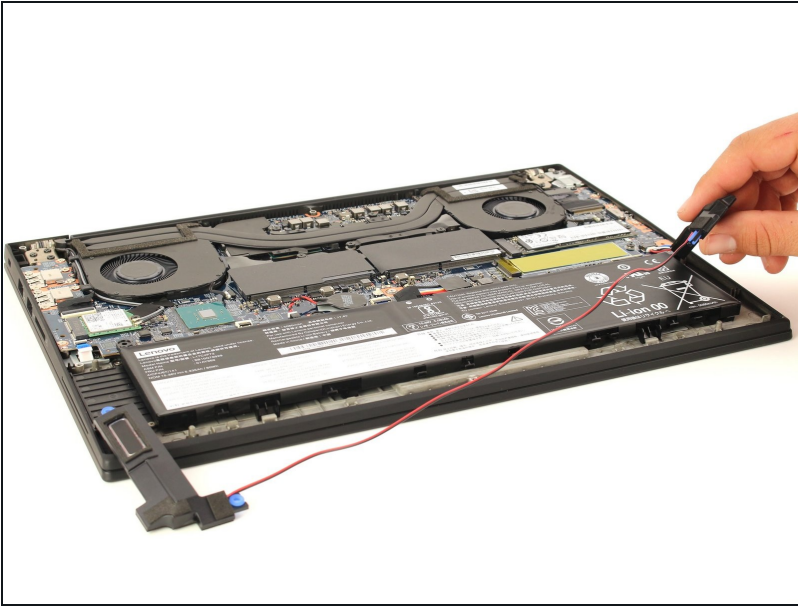
- Orient the laptop so that it is bottom up, and the trackpad is closest to you.
- Unscrew the seven captive screws with a Phillips #00 screwdriver.
  - ⓘ These screws will loosen, but stay attached to the cover. Do not attempt to completely remove them.
- Slide a blue opening pick in the gap between the bottom panel and chassis, and pry off the one clip on each side.
- Remove the back cover from the device.

## Step 2 — Speakers



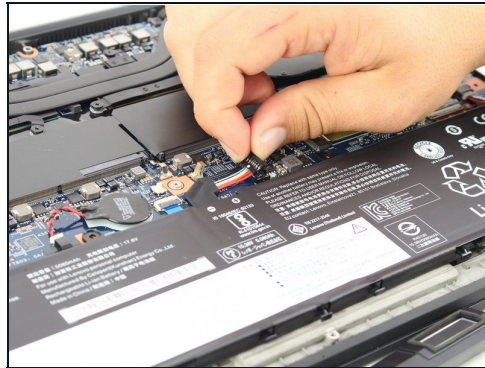
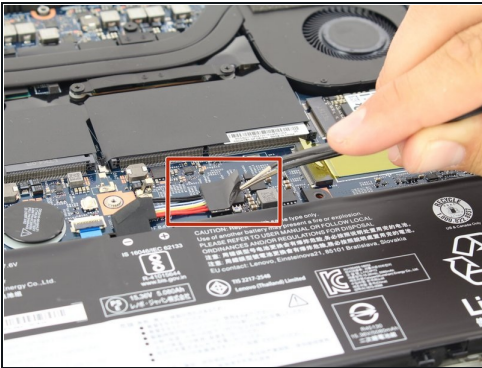
- Use a Phillips #00 head screwdriver to remove the four 4 mm screws above the battery.

### Step 3



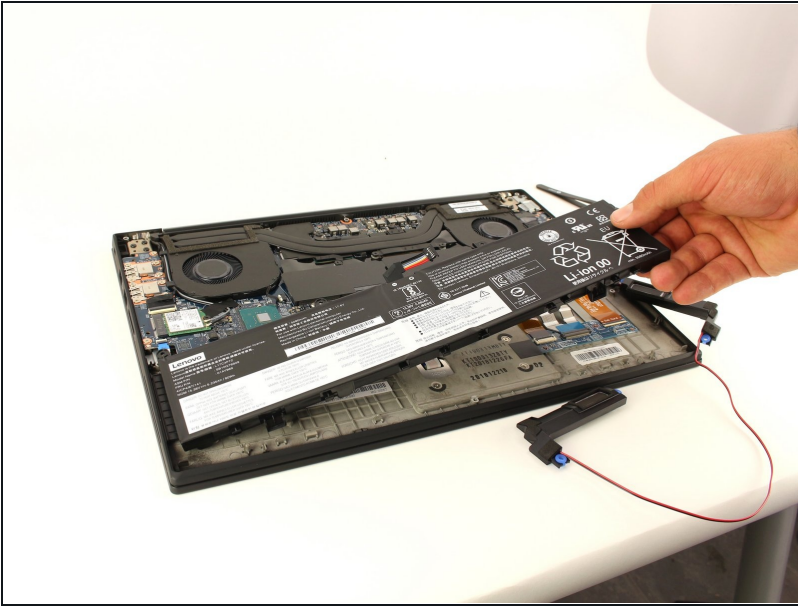
- Lift the speaker modules on either side of the battery out of its pegs, and unwind the cable from the front of the battery.
- Set the speaker modules out of the way.

### Step 4 — Battery



- Use [tweezers](#) to peel the plastic cover off the connector.
- Use a spudger or your fingernail to pry up the battery straight up from the motherboard.

## Step 5



- Lift the battery out of the frame and remove it from the device.

---

To reassemble your device, follow these instructions in reverse order.

Take your e-waste to an [R2 or e-Stewards certified recycler](#).

Repair didn't go as planned? Try some [basic troubleshooting](#), or ask our [Answers community](#) for help.