



HP Chromebook 11 G5 Keyboard Replacement

This is a replacement guide for the HP Chromebook 11 G5 keyboard.

Written By: Salma Zitoun



INTRODUCTION

This is a replacement guide for the HP Chromebook 11 G5 keyboard. The main purpose of the steps below is to show you how to replace the keyboard. The keyboard is required to input characters and perform various manual functions. Symptoms of a defective keyboard include unresponsive or broken keys. If these steps are followed carefully and correctly the keyboard should be easily replaced. Be sure to power off your device before beginning the replacement process.



TOOLS:

- [Spudger](#) (1)
 - [Metal Spudger](#) (1)
 - [Phillips #00 Screwdriver](#) (1)
-

Step 1 — Keyboard



- Remove four large rubber pads from the bottom of the device to reveal screws using the pointed end of a spudger.

Step 2



- Remove two smaller rubber pads from the bottom of the device to reveal screws using the pointed end of a spudger.

Step 3



- Remove the 4mm eleven screws using a Phillips #00 screwdriver.

Step 4



- Flip the device upright and open the screen as far back as possible.

Step 5



- Wedge the flat-end of a metal spudger between the base of the device and the keyboard assembly while applying downward pressure. Slide the spudger across the entirety of the gap until the two components separate.

- ⓘ There will be audible popping sounds caused by the separation of the base of the device and the keyboard assembly as you wedge them apart.

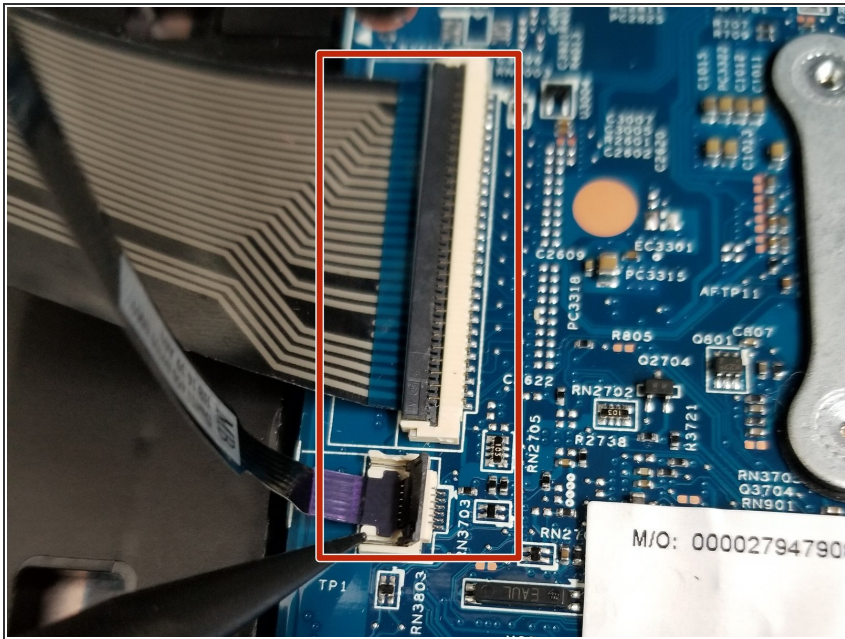
- ⚠ Do not insert the spudger into the gap deeper than necessary as it may snag on the internal components.

Step 6



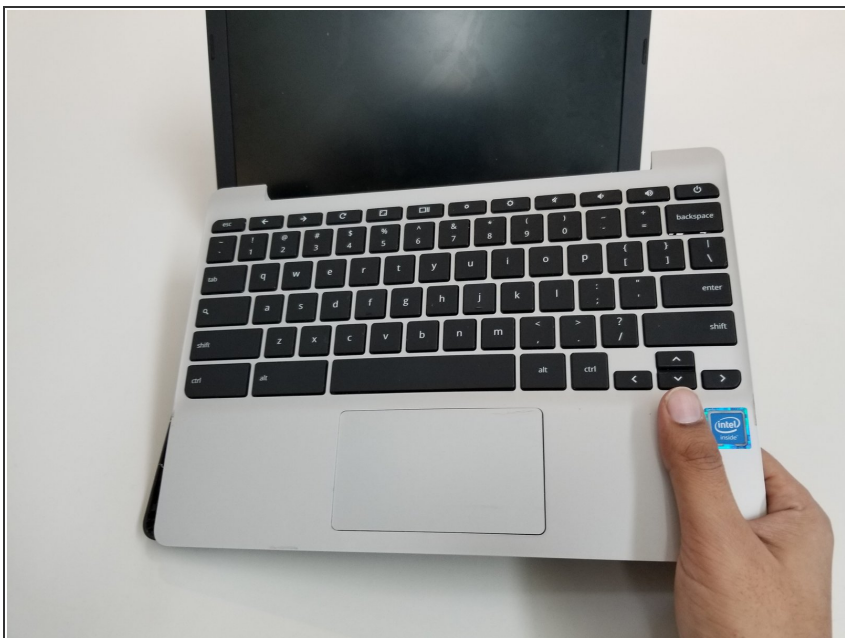
- Gently lift the keyboard assembly slightly above the base of the device.

Step 7



- Disconnect the two ribbon cables connected to the motherboard by using the pointed end of a spudger to lift the plastic connector lids to allow the ribbon cables to be gently removed by hand.

Step 8



- Gently remove the keyboard assembly by hand from the base of the device.

To reassemble your device, follow these instructions in reverse order.