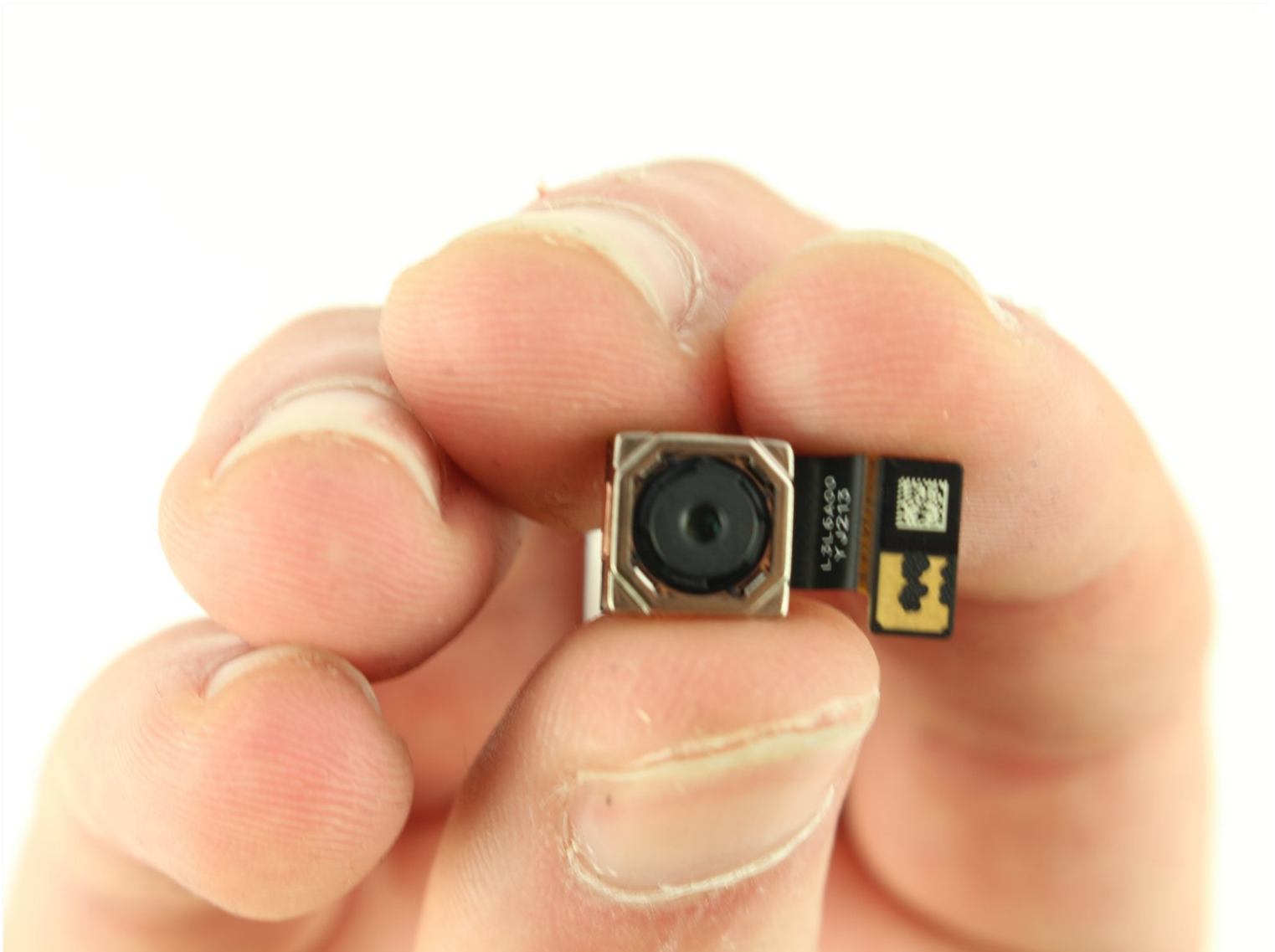




Motorola Moto G7 Play Camera Replacement

This guide will show users how to replace a...

Written By: Monserath Casillas



INTRODUCTION

This guide will show users how to replace a defective or damaged rear camera lens in the Motorola Moto G7 Play. This guide applies to both the XT1952-3 and XT1952-2 models. The rear camera lens is capable of taking 13MP photos as well as 1080p video. Users may need to replace the camera if the lens is badly damaged. A [damaged lens](#) affects photo quality in the camera.

Before you begin, download the [Rescue and Smart Assistant](#) app to backup your device and diagnose whether your problem is software or hardware related.

TOOLS:

[iFixit Opening Picks \(Set of 6\)](#) (1)


[iFixit Opening Tool](#) (1)

[Phillips #00 Screwdriver](#) (1)

Step 1 — Back Cover



 Turn off your device before you begin.

- Use the iFixit pick to break the adhesive around the back case.
-  Use a heat gun, hairdryer, or iOpener to weaken the adhesive around the back case. If you're using the iOpener, please review the [instructions](#) for proper use.

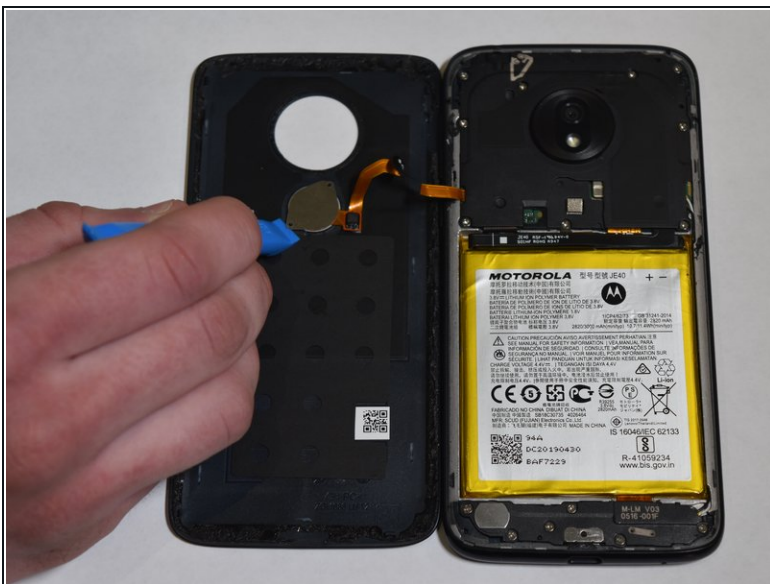
Step 2



- Detach the back case from the phone.

⚠ Make sure the back is opened right to left so the cable of the fingerprint scanner does not get damaged.

Step 3



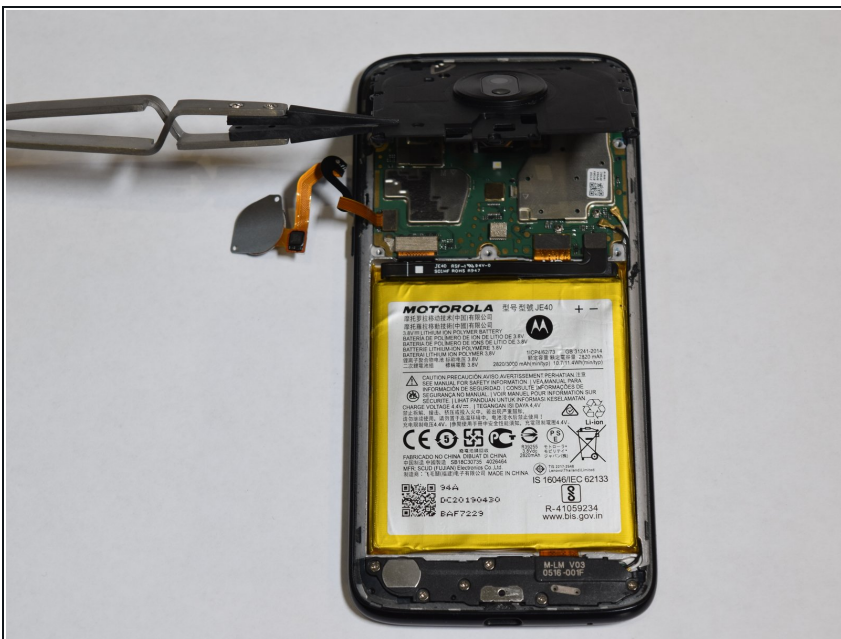
- Use the iFixit pick and the iFixit opening tool to pull the fingerprint scanner off of the back case.

Step 4 — Camera



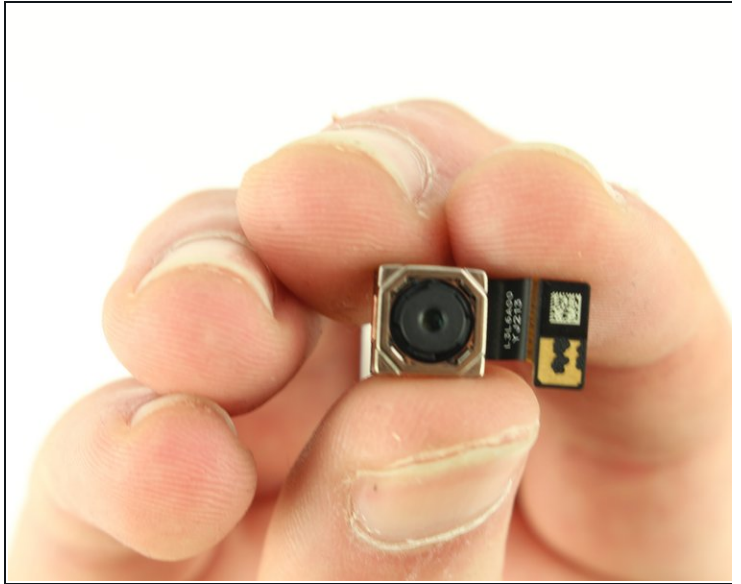
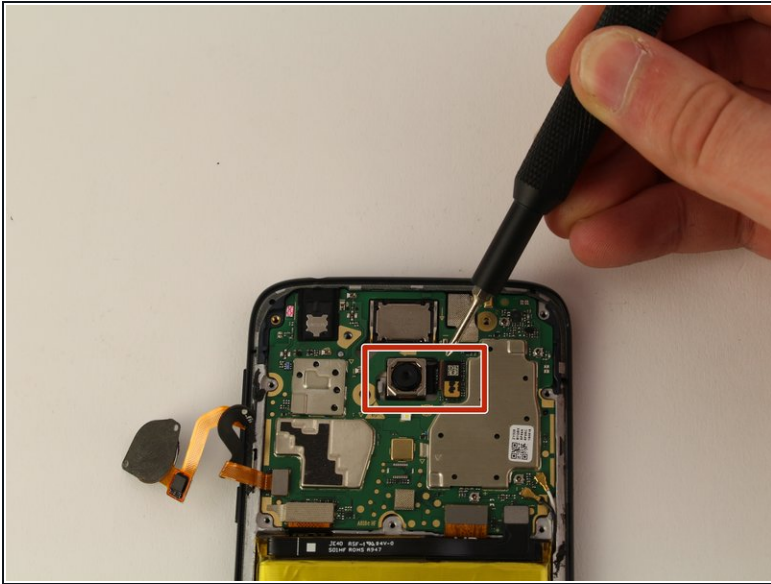
- Remove the nine 3.2mm screws from the motherboard cover with a Phillips #00 screwdriver.

Step 5



- Lift the motherboard cover from the bottom.
- ① Use reverse tweezers or a similar tool if needed.

Step 6



- Once the motherboard cover is removed, use the iFixit opening tool to disconnect the ribbon cable connecting the camera to the motherboard.
- The camera can now be removed and is ready to be replaced.

To reassemble your device, follow these instructions in reverse order.