



Motorola Moto G7 Play Motherboard Replacement

This motherboard replacement guide should be...

Written By: Monserath Casillas



INTRODUCTION

This motherboard replacement guide should be attempted if other parts of the device were replaced, but the problem persisted. The steps should be followed for the Motorola G7 Play, models XT1952-3 and XT1952-2. The motherboard powers the whole device and makes it function, so it's a very important part that should be replaced if it is damaged.

Before you begin, download the [Rescue and Smart Assistant](#) app to backup your device and diagnose whether your problem is software or hardware related.

TOOLS:

[iFixit Opening Picks \(Set of 6\)](#) (1)

[iFixit Opening Tool](#) (1)

[Phillips #00 Screwdriver](#) (1)

[SIM Card Eject Tool](#) (1)

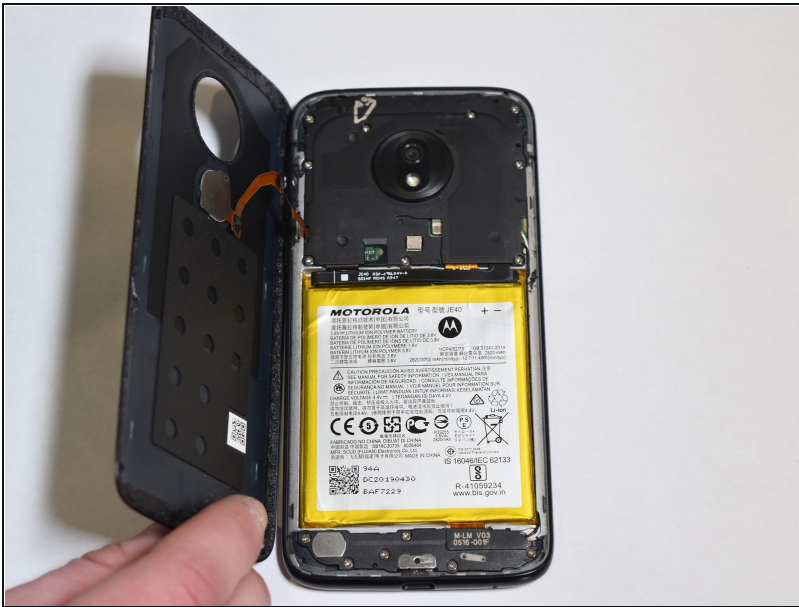
Step 1 — Back Cover



 Turn off your device before you begin.

- Use the iFixit pick to break the adhesive around the back case.
- ① Use a heat gun, hairdryer, or iOpener to weaken the adhesive around the back case. If you're using the iOpener, please review the [instructions](#) for proper use.

Step 2



- Detach the back case from the phone.

⚠ Make sure the back is opened right to left so the cable of the fingerprint scanner does not get damaged.

Step 3



- Use the iFixit pick and the iFixit opening tool to pull the fingerprint scanner off of the back case.

Step 4 — Motherboard



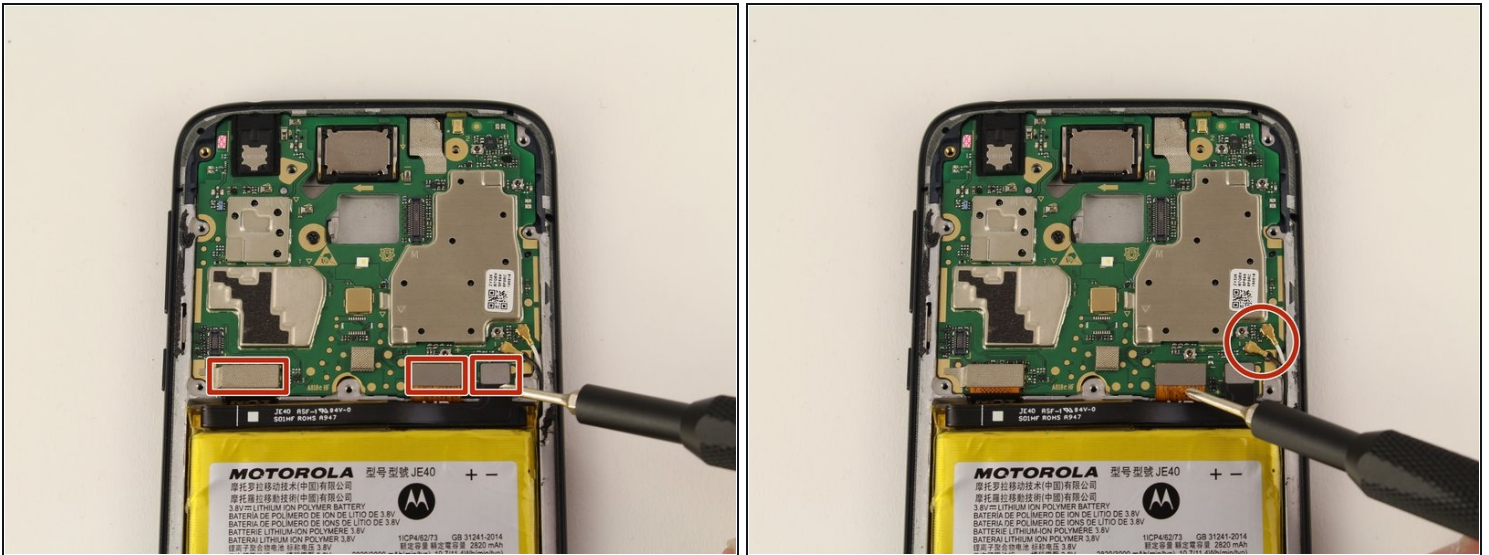
- Remove the nine 3.2mm screws from the motherboard cover with a Phillips #00 screwdriver.

Step 5



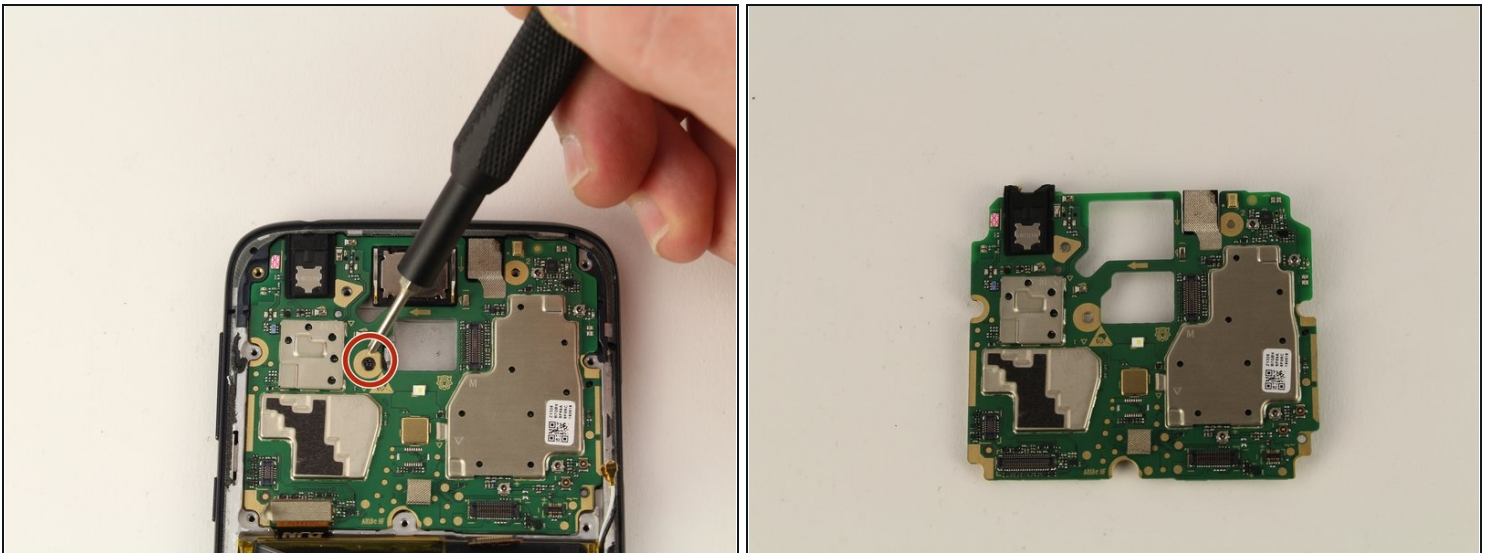
- Lift motherboard cover off by the bottom.
- ① Use reverse tweezers or a similar tool if needed.

Step 6



- Once the motherboard cover is removed, disconnect the four ribbon cables and the two wires attached to the motherboard.

Step 7



- Using the Phillips #00 screwdriver, remove the single 0.4 mm black screw in the center of the motherboard.
- Remove the motherboard from the device.

To reassemble your device, follow these instructions in reverse order.

