



Shark ION Robot S87 Drive Wheel Replacement

Replacing the wheel on the Shark ION Robot S87.

Written By: Trevor Davies



INTRODUCTION

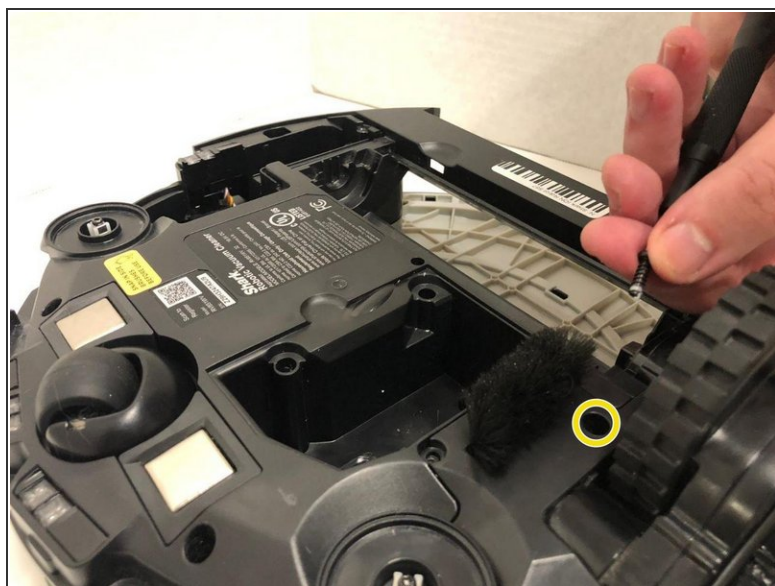
If your Shark ION Robot S87 has problems getting around, then you may need some new drive wheels. This guide will show you how to replace the wheels, and get it cleaning again.




TOOLS:

- [Phillips #1 Screwdriver](#) (1)
 - [T15 Torx Screwdriver](#) (1)
-

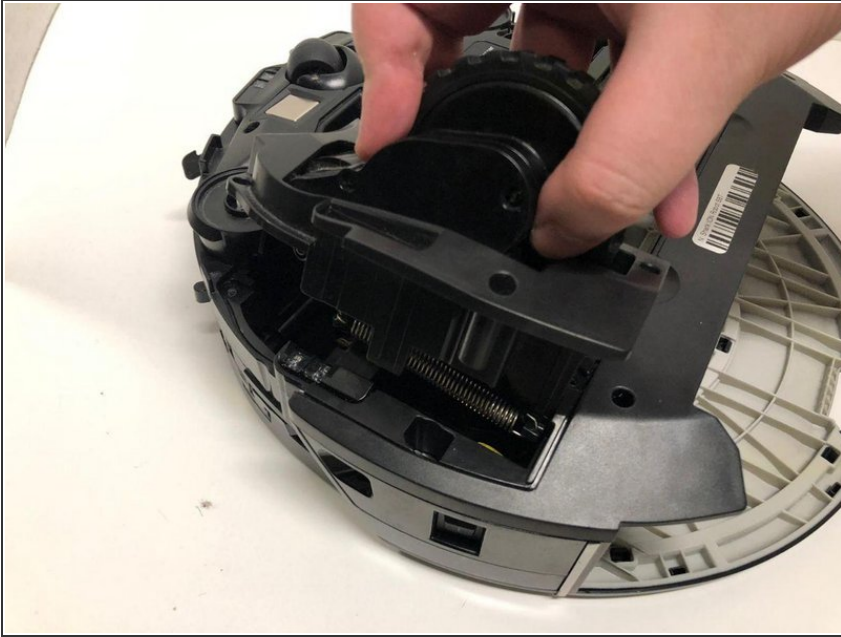
Step 1 — Drive Wheel



 Make sure device is turned off before attempting this replacement.

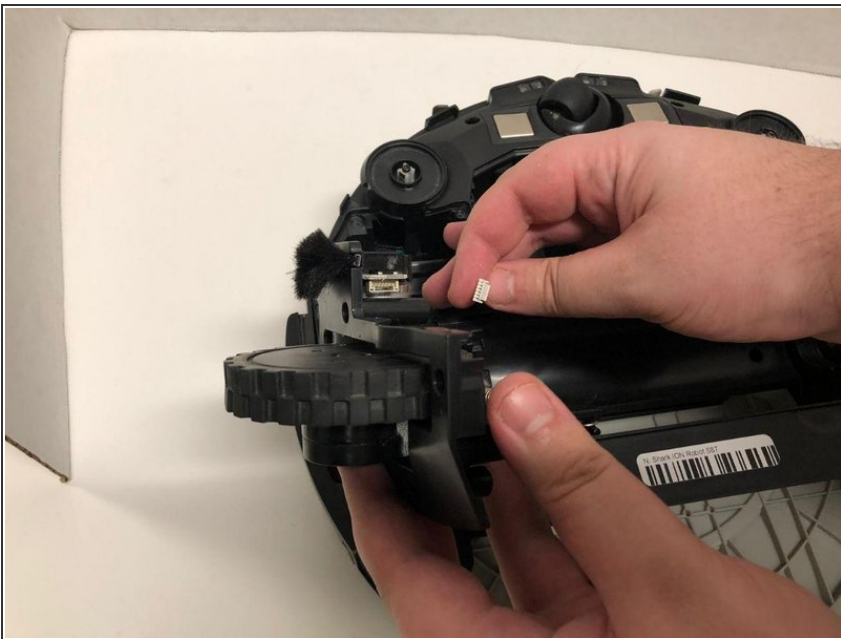
- Remove three 13mm screws using a T15 Torx screwdriver.
- Remove one 15mm screw using a Phillips #1 screwdriver.
- Remove one final 15mm Phillips #1 screw.

Step 2



- Carefully lift the wheel assembly out of the housing, making sure not to damage its connecting wire.

Step 3



- Disconnect the wire carefully from the wheel assembly by pinching and pulling away from it.

To reassemble your device, follow these instructions in reverse order.