



Sony Vaio SVS151190X Wifi Card Replacement

This guide will show how to replace the Wifi Card of the Sony Vaio SVS151190X or similiar Sony Vaio S15 laptops.

Written By: Patrick Lee



INTRODUCTION

We will be replacing the WiFi card in a Sony Vaio SVS151190X laptop. If your device is unable to connect to Wireless Internet, you may need to replace your card. A replacement may be in order if your current WiFi card is old, damaged, or faulty. Before buying/installing a new card ensure that your router is running properly and all your security credentials are correct .



TOOLS:

- [Nylon Tipped Tweezers](#) (1)
 - [Phillips #1 Screwdriver](#) (1)
-

Step 1 — Wifi Card



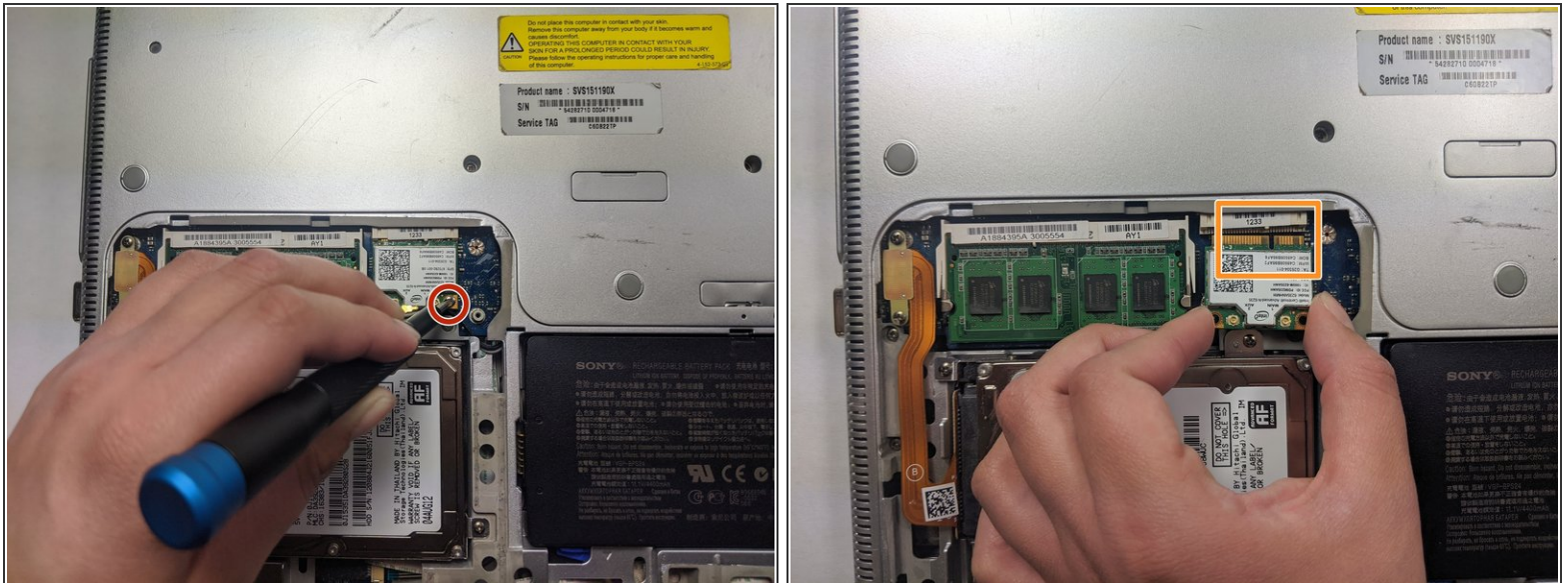
- Using a #1 Phillips screwdriver, remove the two 5mm screws.
- Slide off the back cover.

Step 2



- Using a pair of tweezers, remove the two wires as directed.

Step 3



- Remove the single 3mm screw using the Phillips #1 screwdriver.
- Remove the Wi-Fi card.
- During re-installation, ensure the notch is properly lined up.

To reassemble your device, follow these instructions in reverse order.