



Sony BDP-S3500 Front Panel Replacement

Guide to remove and replace the Sony BDP-S3500 front panel.

Written By: Michael Meissner



INTRODUCTION

This is a guide to remove the front panel assembly of the Sony BDP S3500.

Be sure to review the [troubleshooting guide](#), as most of the time the problems are due malfunctioning software rather than it being a hardware issue.

This guide will show you how to safely remove the front panel assembly without damaging the other components.



TOOLS:

- [Phillips #2 Screwdriver](#) (1)
-

Step 1 — Front Panel



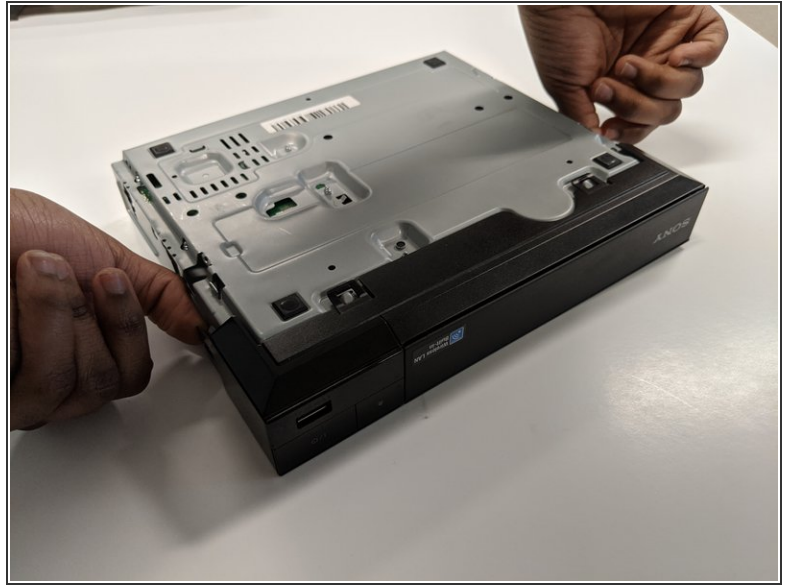
- Use the Phillips #2 screwdriver to remove the two 9mm screws located on the back of the device.

Step 2



- Slide the top panel off towards the back of the device.
- Remove the top panel.

Step 3



- Unclip the plastic tags from the bottom of the device.
- Unclip the plastic tags from the sides of the device.
- Slide the front panel off.

To reassemble your device, follow these instructions in reverse order.