



# HP Pavilion x360 11m-ad013dx Battery Replacement

This guide demonstrates how to remove the battery in the HP Pavilion x360 11m-ad013dx.

Written By: Hank Ferguson



---

## INTRODUCTION

If the battery in your HP Pavilion x360 11m-ad013dx is in need of replacement or has stopped functioning properly, use this guide to replace the battery. Some key indicators of a malfunctioning battery include not turning on, only functioning when connected to power, or rapid depletion of the battery. For more information about a malfunctioning or nonfunctioning battery, see our troubleshooting page [HP Pavilion x360 11m-ad013dx Troubleshooting](#). Be extremely cautious when handling damaged batteries. Signs of damage can include swelling or corroded connections. Swollen batteries can catch fire or even explode. See iFixit's swollen battery page: [What to do with a swollen battery](#) for more information.

---

### TOOLS:

- [Phillips #0 Screwdriver](#) (1)
  - [Phillips #1 Screwdriver](#) (1)
  - [Spudger](#) (1)
-

## Step 1 — Keyboard



- Lay the HP Pavilion top-down with the front edge facing towards you.

## Step 2



- Remove the three 4.8mm Phillips #0 screws from the front side.

### Step 3



- Using a plastic spudger, remove the grey silicon strip closest to the back-side.

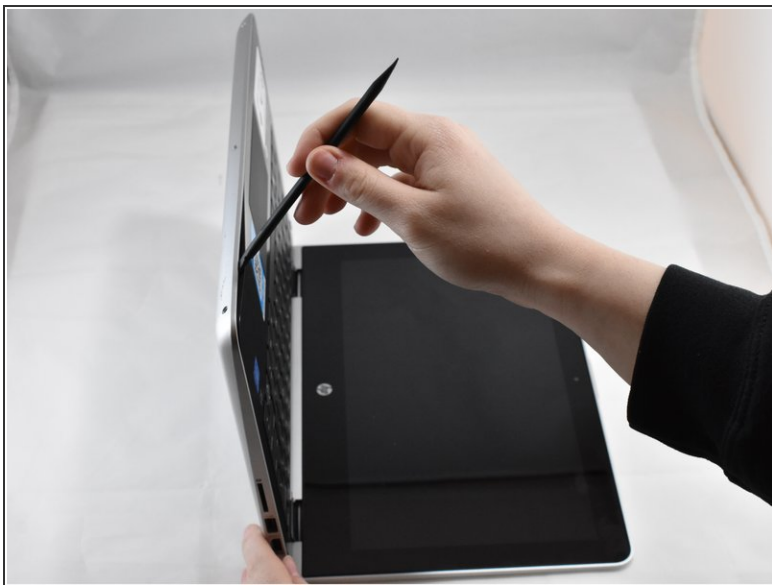
### Step 4



- Remove the three 5.7mm Phillips #1 screws.



## Step 5



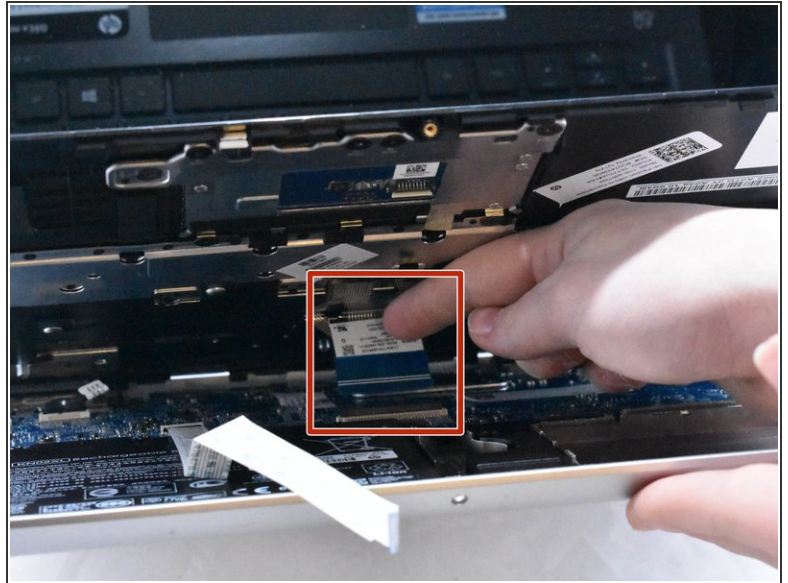
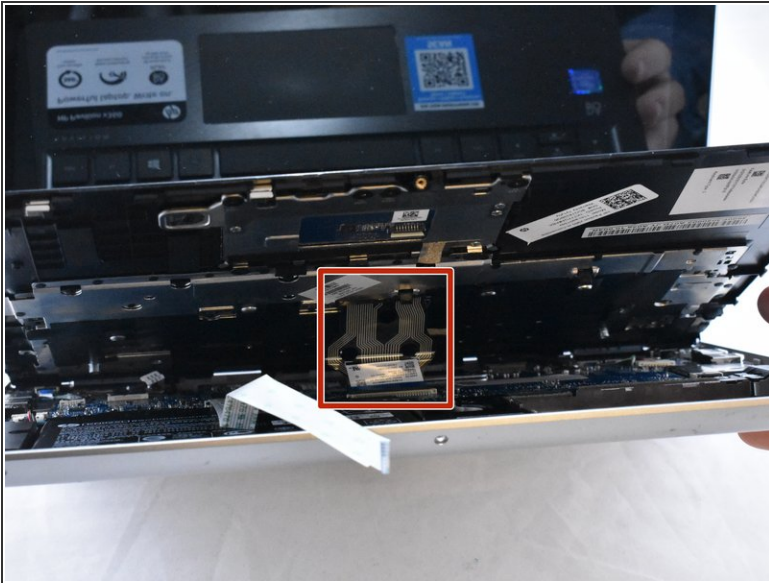
- Open the HP Pavilion so that the screen is showing. Then tilt it down so that the screen is on its back, facing up.
- Using a spudger, pry off the black keyboard panel.
- ⓘ This step requires force to unclasp the latches keeping the keyboard in place.

## Step 6



- Using your fingernail, disconnect the zero insertion force (ZIF) keyboard connector cable by flipping up the small locking flap.
- ⓘ You may disconnect the other end of the cable, for ease of access to other parts. Keep in mind that the end labeled MB connects to the motherboard.

## Step 7



- Using your fingernail, disconnect the zero insertion force (ZIF) connector for the touch pad cable by flipping up the small locking flap.

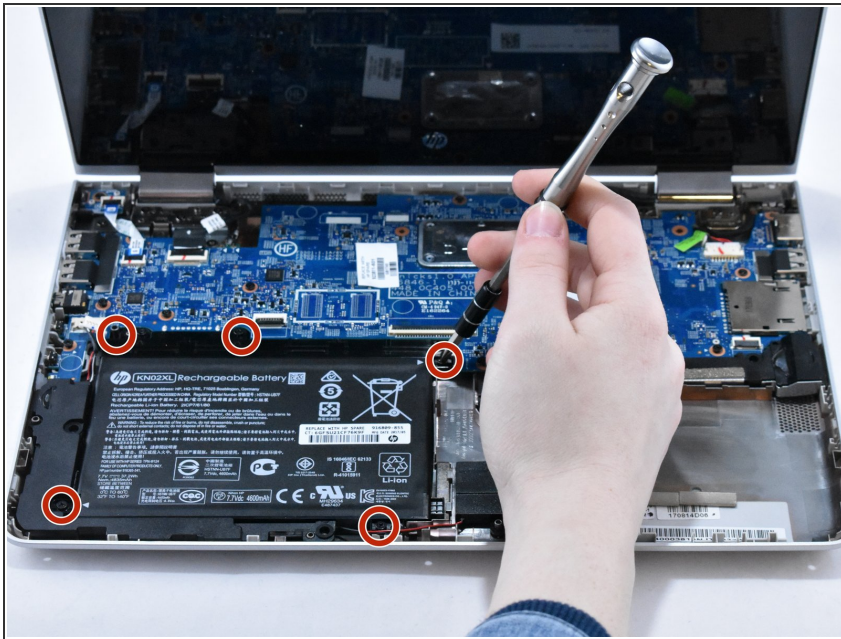
## Step 8



- Remove the keyboard.

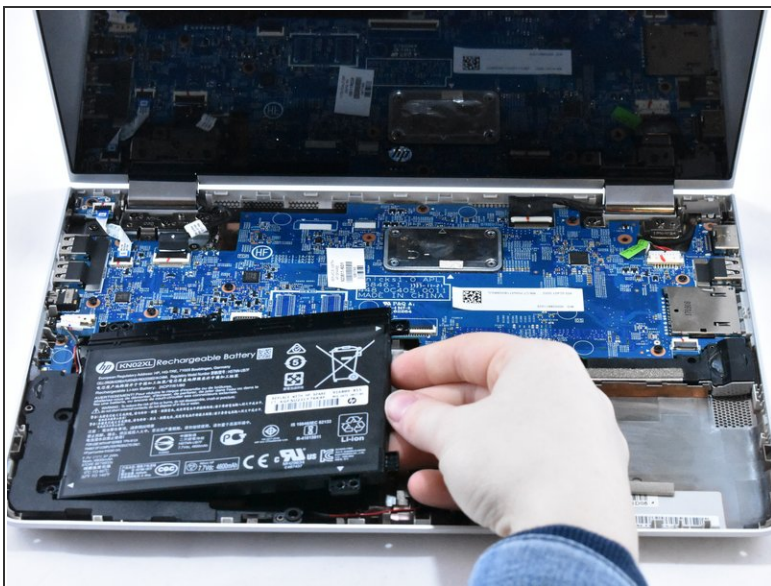


## Step 9 — Battery



- Remove the five 4.6mm Phillips #1 screws located around the battery.

## Step 10



- Using a spudger for assistance, lift up the right edge of the battery.
- Remove the battery.



To reassemble your device, follow these instructions in reverse order.