



HP Pavilion x360 11m-ad013dx Motherboard Replacement

This guide will successfully demonstrate how to replace the HP Pavilion x360 11m-ad013dx motherboard.

Written By: Hank Ferguson



This document was generated on 2020-11-28 07:57:57 AM (MST).

INTRODUCTION

Below you will find the steps to replace the motherboard for the HP Pavilion x360 11m-ad013dx. Whether you want to upgrade your laptop's performance or your motherboard is malfunctioning, follow these steps to replace the motherboard. The motherboard, also known as the system board, is a main part of the system, containing the WLAN module, PSU, and memory module. The motherboard also provides access to the heat sink, located on the backside of the motherboard. Be careful when handling the motherboard, as some parts may be delicate.

TOOLS:

- [Phillips #0 Screwdriver](#) (1)
 - [Phillips #1 Screwdriver](#) (1)
 - [Spudger](#) (1)
-

Step 1 — Keyboard



- Lay the HP Pavilion top-down with the front edge facing towards you.

Step 2



- Remove the three 4.8mm Phillips #0 screws from the front side.

Step 3



- Using a plastic spudger, remove the grey silicon strip closest to the back-side.

Step 4



- Remove the three 5.7mm Phillips #1 screws.

Step 5



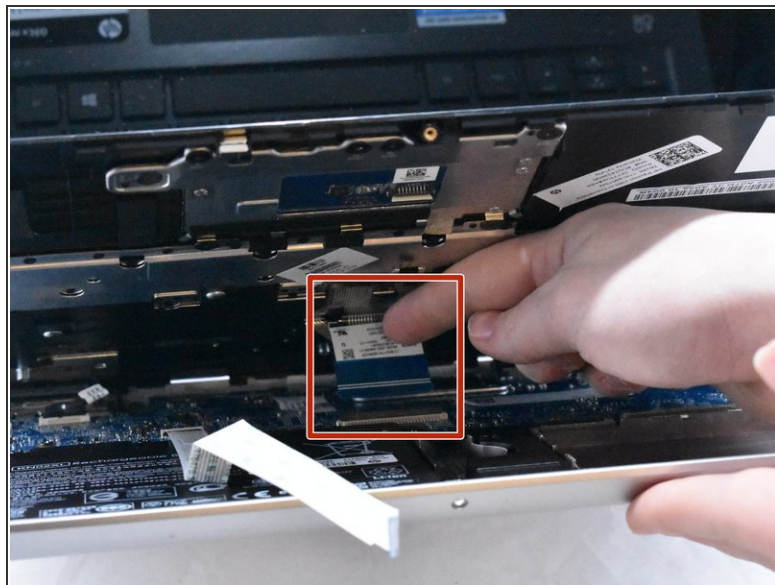
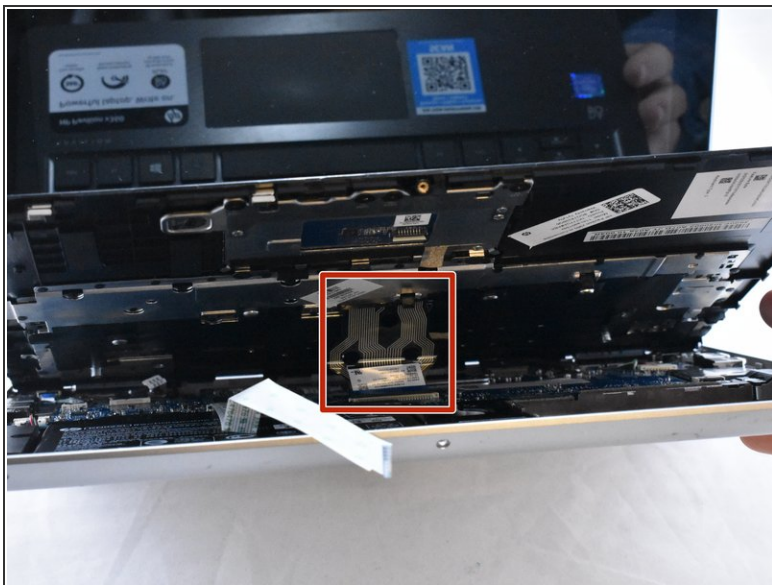
- Open the HP Pavilion so that the screen is showing. Then tilt it down so that the screen is on its back, facing up.
- Using a spudger, pry off the black keyboard panel.
- ⓘ This step requires force to unclasp the latches keeping the keyboard in place.

Step 6



- Using your fingernail, disconnect the zero insertion force (ZIF) keyboard connector cable by flipping up the small locking flap.
- ⓘ You may disconnect the other end of the cable, for ease of access to other parts. Keep in mind that the end labeled MB connects to the motherboard.

Step 7



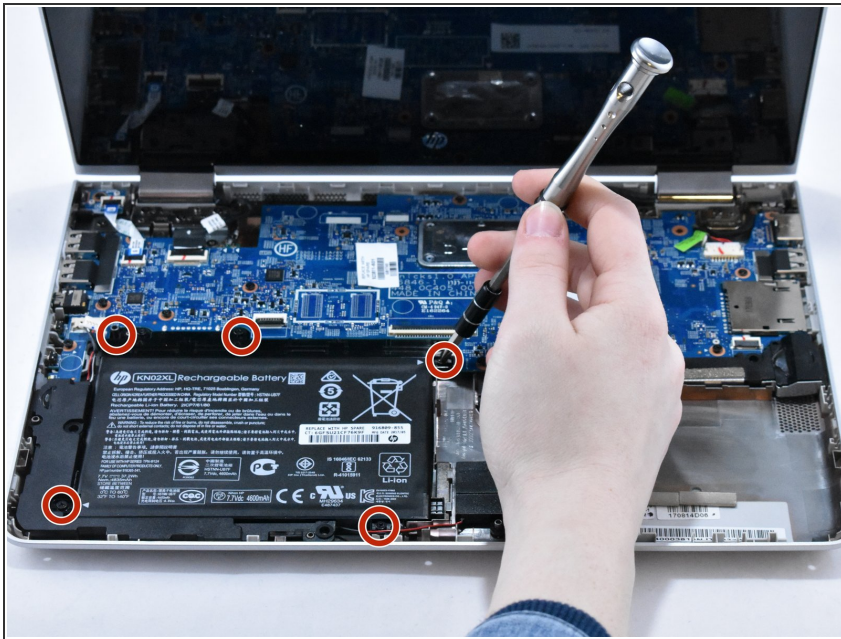
- Using your fingernail, disconnect the zero insertion force (ZIF) connector for the touch pad cable by flipping up the small locking flap.

Step 8



- Remove the keyboard.

Step 9 — Battery



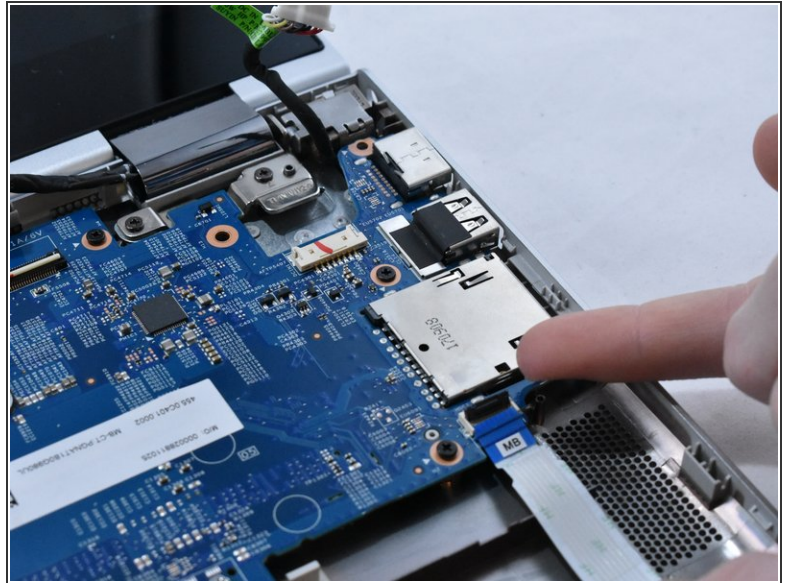
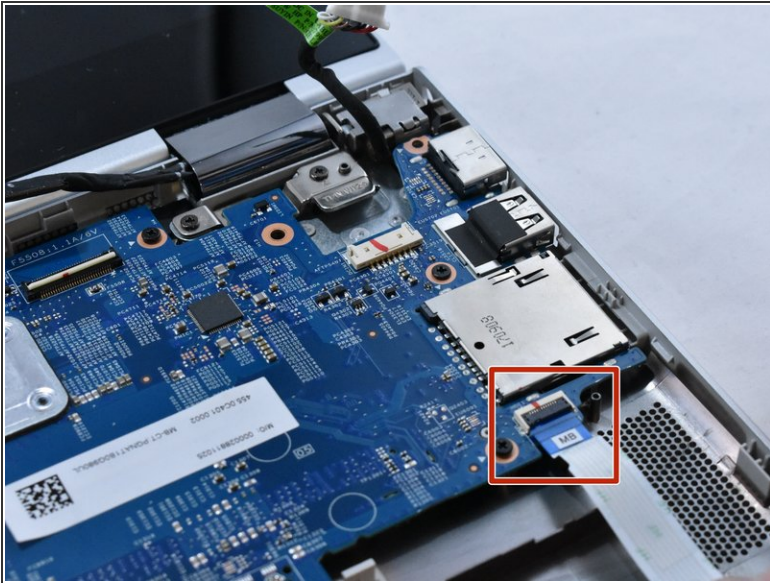
- Remove the five 4.6mm Phillips #1 screws located around the battery.

Step 10



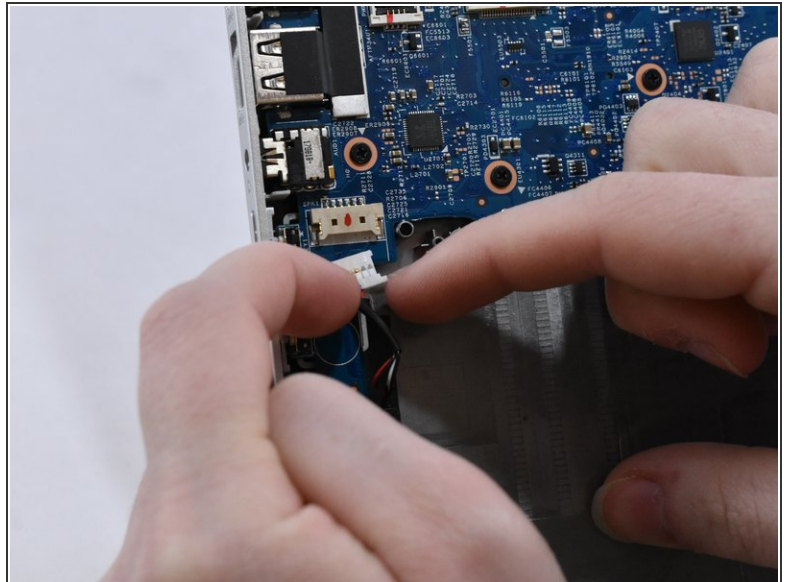
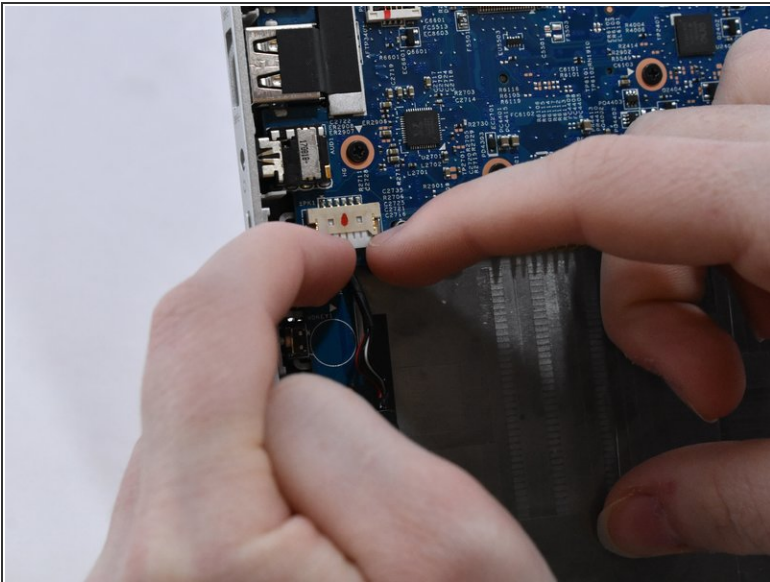
- Using a spudger for assistance, lift up the right edge of the battery.
- Remove the battery.

Step 11 — Speaker



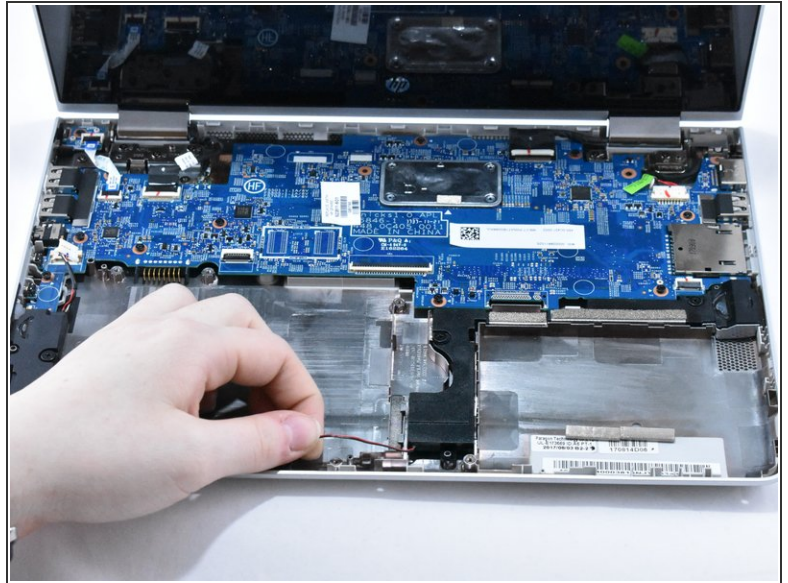
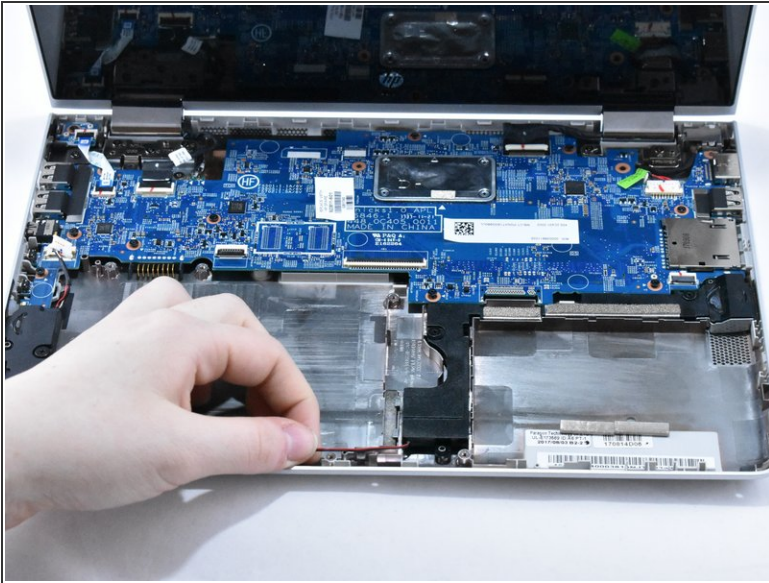
- Using your fingernail, disconnect the ZIF (zero insertion force) hard drive cable by flipping up the small locking flap.

Step 12



- With your fingernails, disconnect the speaker cable from the motherboard by pulling back on the connector.
- ⓘ Do not directly pull on the wires, as this can damage the connector.

Step 13



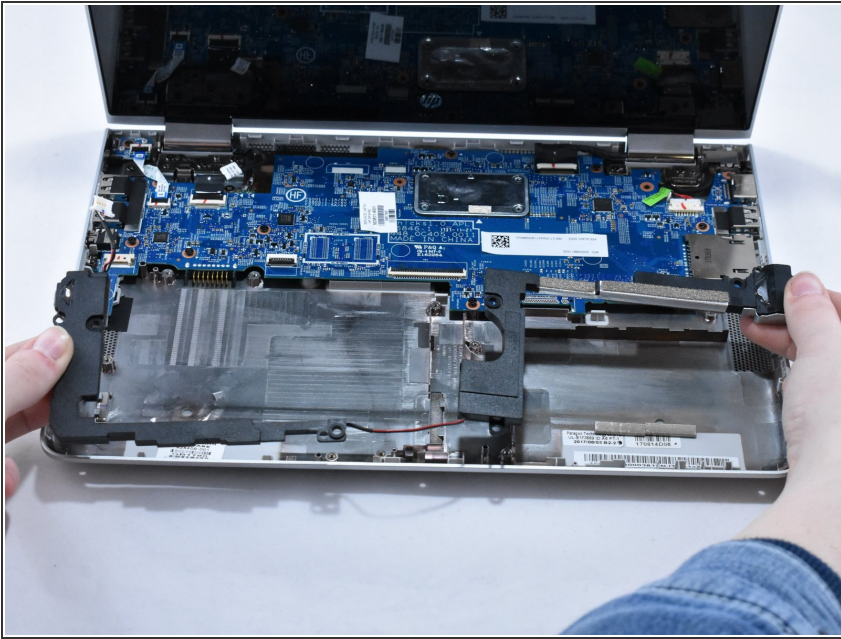
- Lift the speaker cable from its retention chamber.

Step 14



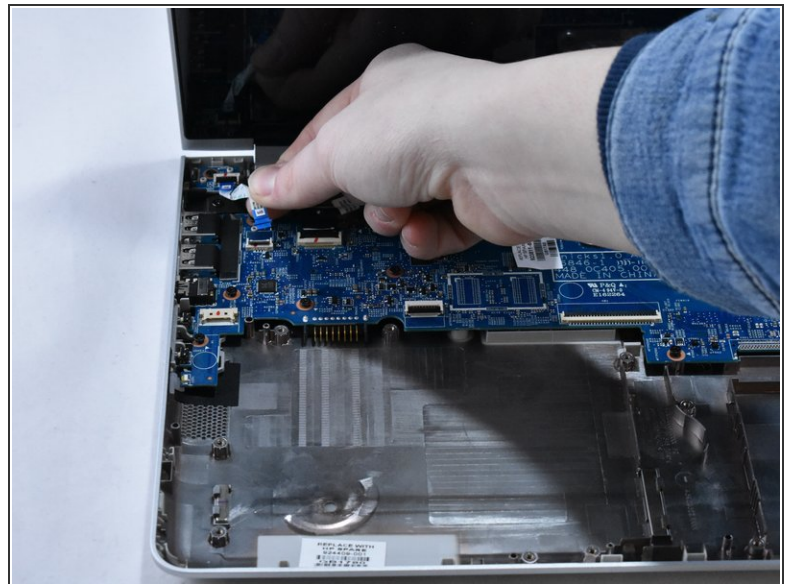
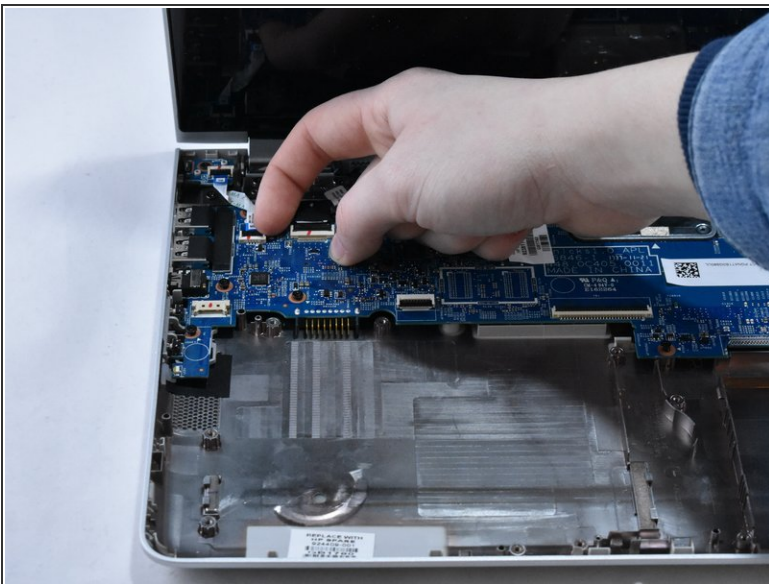
- Remove the four 6.2mm Phillips #1 screws around the speakers.

Step 15



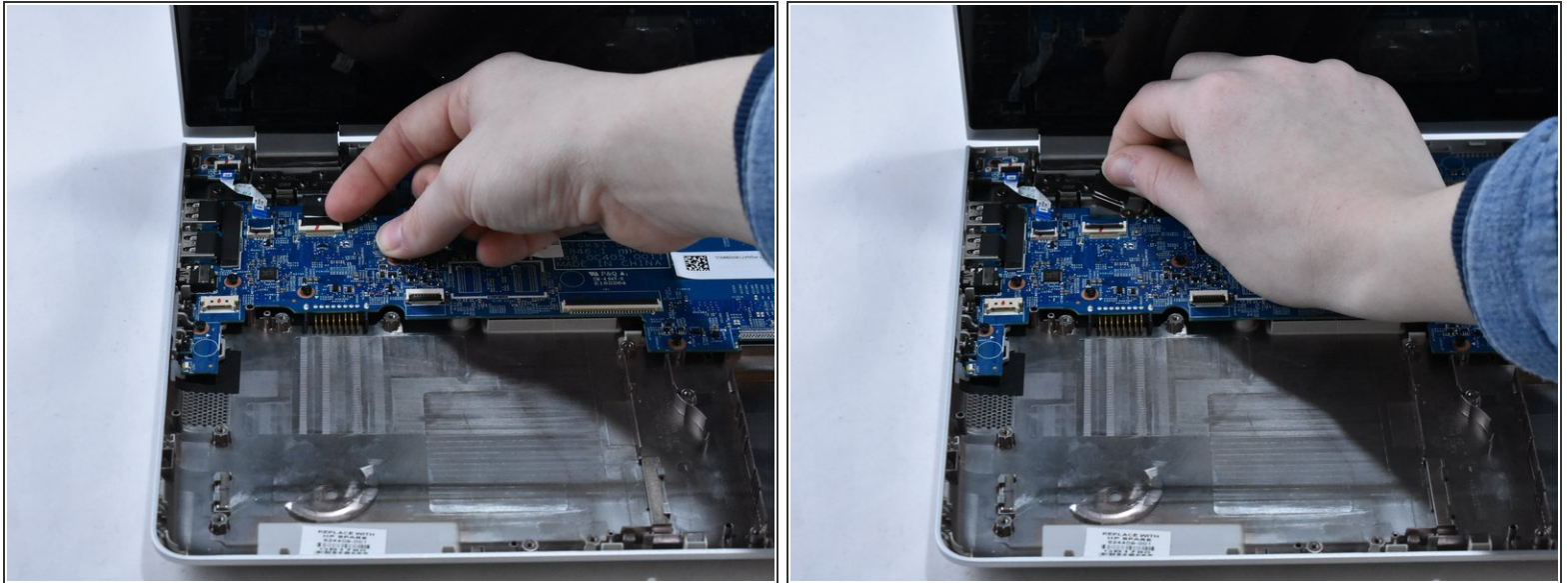
- Remove the speakers.

Step 16 — Motherboard



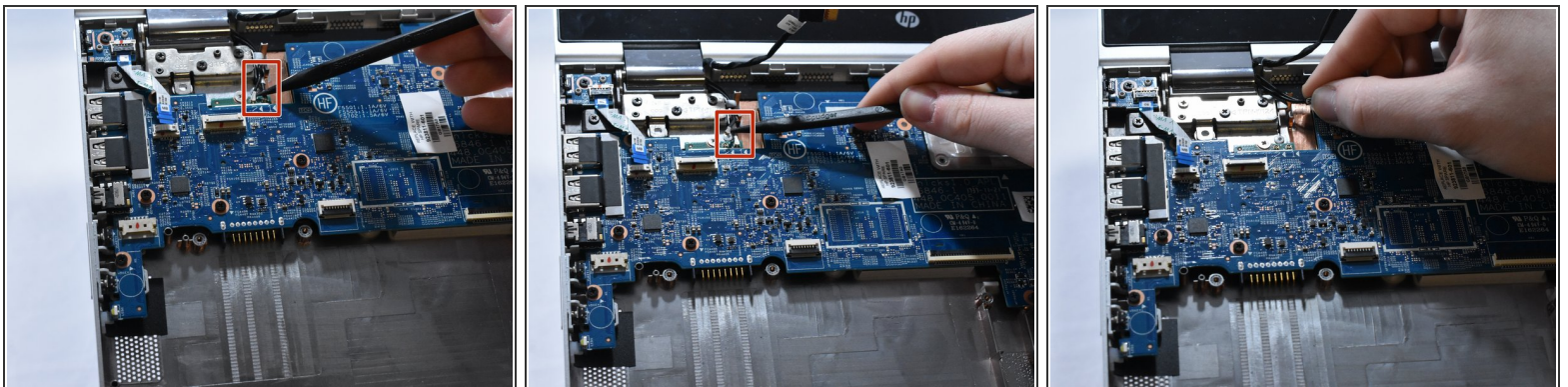
- Using your fingernail, disconnect the ZIF (zero insertion force) power button connector cable from the motherboard.

Step 17



- Using your fingernail, disconnect the ZIF display panel connector cable from the motherboard.

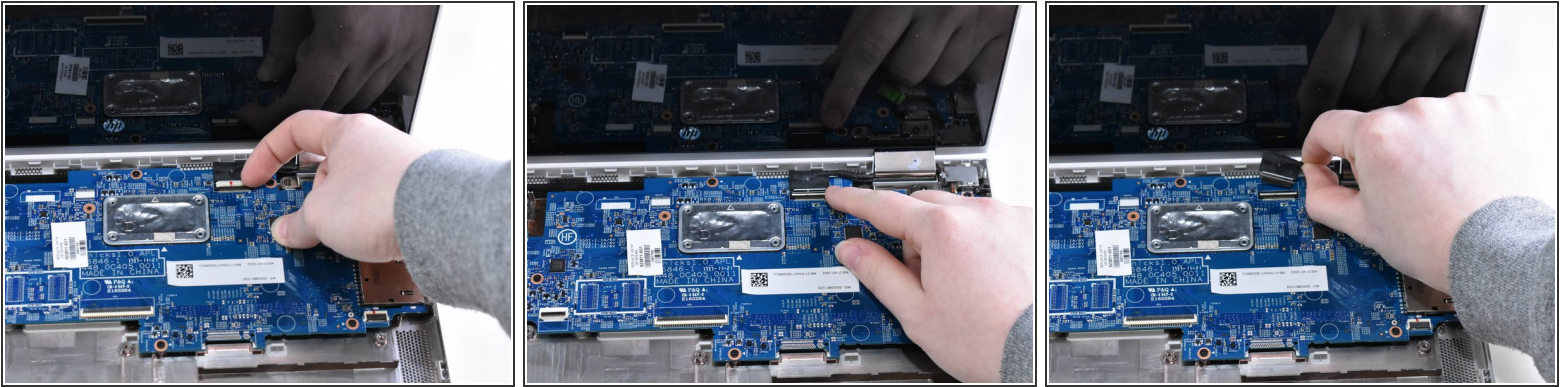
Step 18



- Disconnect the two WLAN antenna cables by sliding under the cable with a spudger, then lifting straight up.

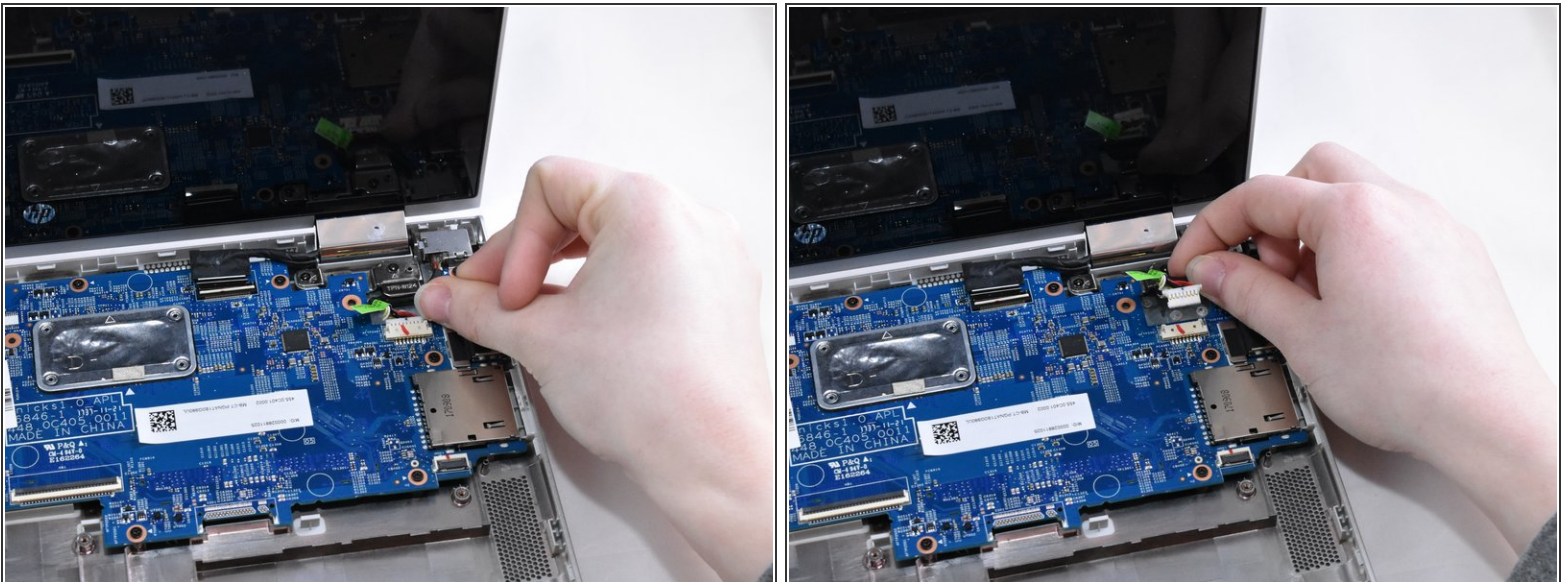
i The black labeled cable inserts into the "A" connection. The white labeled cable inserts into the "B" connection.

Step 19



- Using your fingernail, disconnect the ZIF display touch screen connector cable from the motherboard.

Step 20



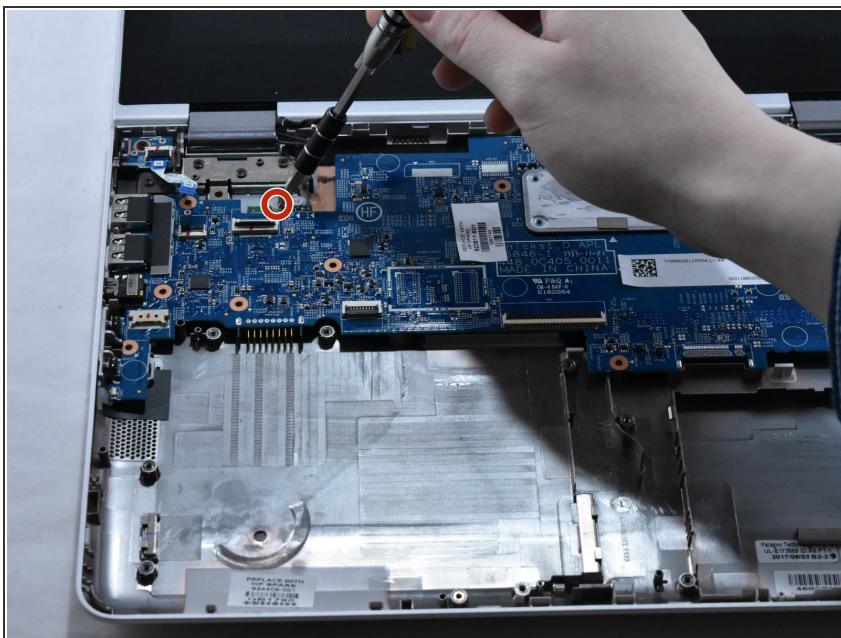
- Using your fingernails, disconnect the power connector cable by pulling straight out.
- ⓘ Do not directly pull the wires, as this can damage the connector. Instead, pull on the white, plastic part of the connector.

Step 21



- Remove the eleven 4.6 mm Phillips #1 screws from around the motherboard.

Step 22



- Remove the one 2.2 mm Phillips #1 broad head screw in the WLAN module.

Step 23



- Lift the motherboard up on the right side. Then, gently pull the motherboard straight out to the right.

To reassemble your device, follow these instructions in reverse order.