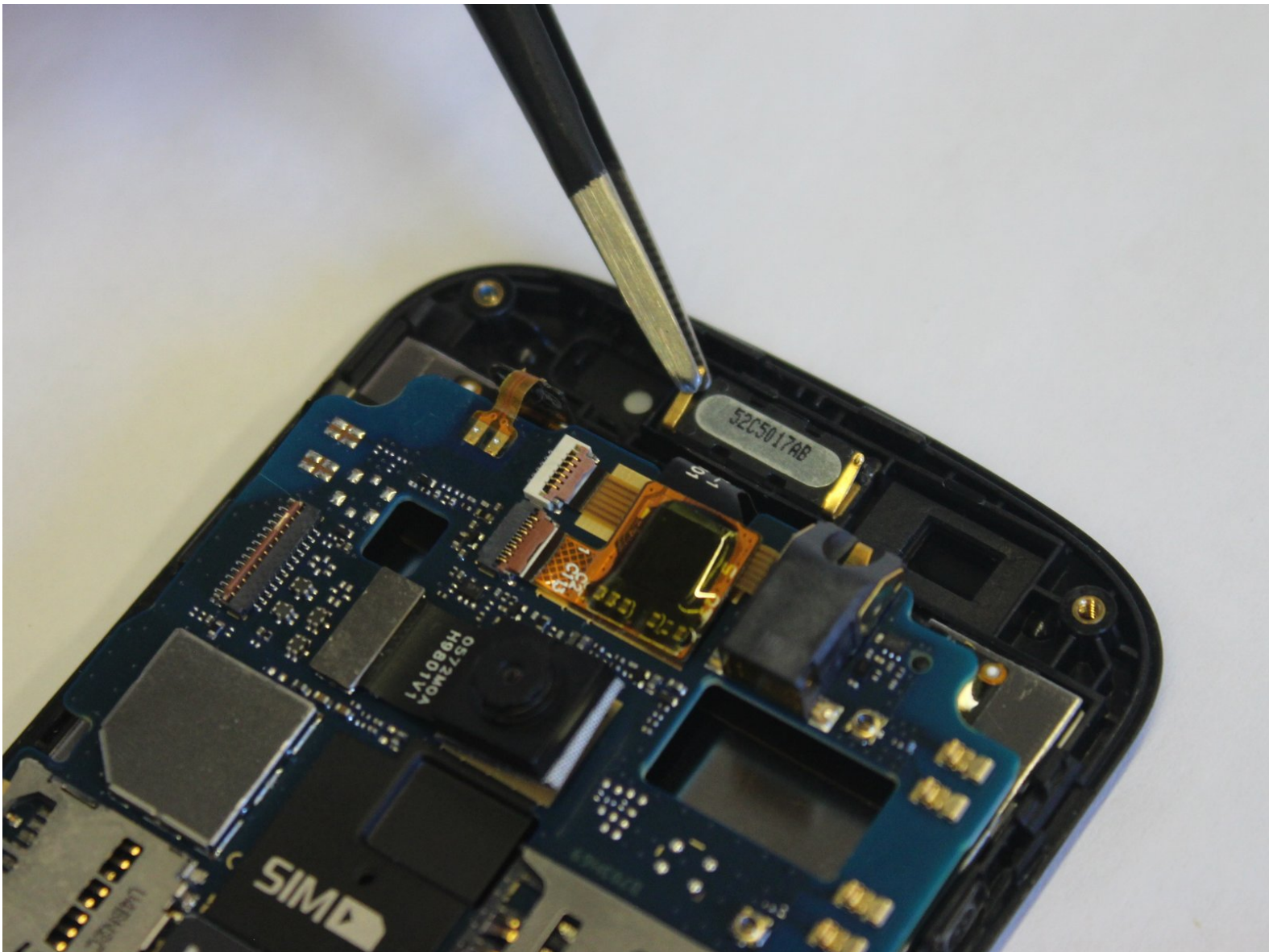




# ZTE Whirl 2 Speaker Replacement

How to replace the speaker on the ZTE Whirl 2

Written By: Alana Rucks



---

## INTRODUCTION

If your ZTE Whirl 2 (model Z667G) isn't producing clear audio from the primary speaker, use this guide to replace the speaker.

The speaker for the phone is the main function that is used during calls and when a ringtone sounds. A faulty phone speaker can result in little audio to none at all.

Before using this guide, inspect the speaker area for any debris that may be interfering with the sound quality.

Before beginning, make sure your phone is off and is disconnected from any power source.

---

### TOOLS:

- [iFixit Opening Picks set of 6](#) (1)
  - [Phillips #00 Screwdriver](#) (1)
  - [iFixit Opening Tools](#) (1)
  - [ESD Safe Tweezers Blunt Nose](#) (1)
-

## Step 1 — Battery



- Power off your phone before removing the battery.
- Pry the cover off the back of the phone using your fingers.

## Step 2



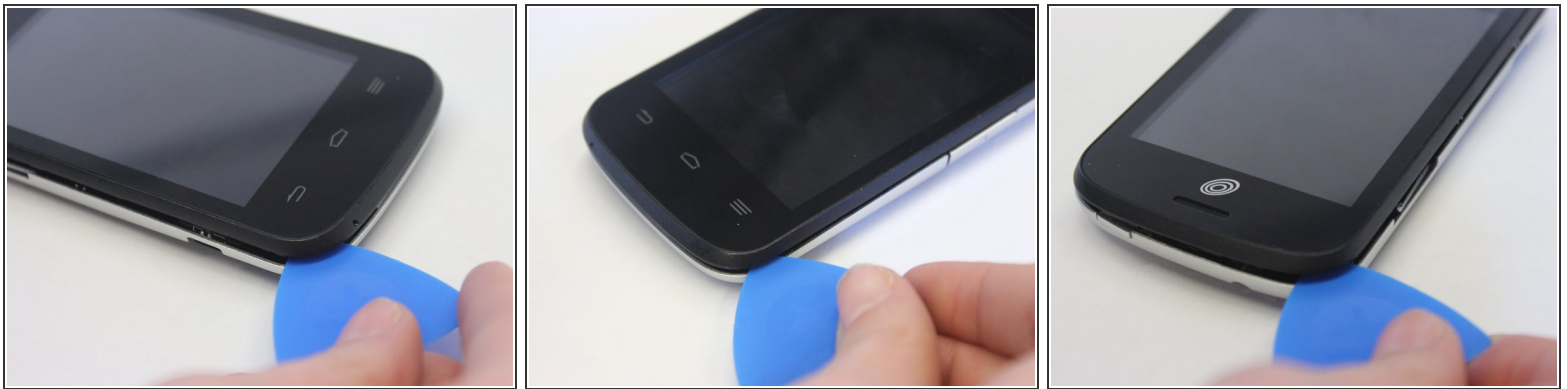
- Pry the battery from the phone using your fingers.

## Step 3 — Back Panel



- Remove four 4 mm screws using a Phillips #00 screwdriver.
- Use a tweezers to remove the lock sticker from the bottom right screw. Remove the 4 mm screw using a Phillips #00 screwdriver.

## Step 4



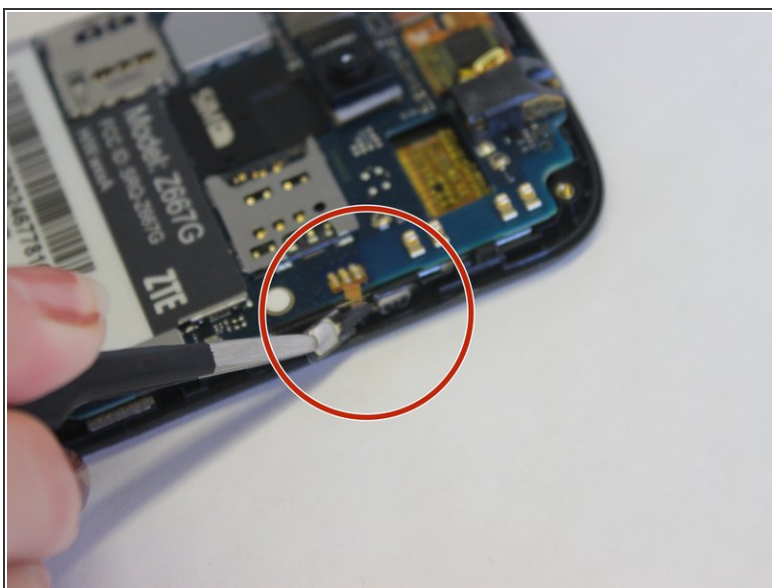
- Insert an opening pick between the midframe and the digitizer.
  - Move the pick around the midframe to detach the midframe from the digitizer.
- i** The lock button and volume buttons may fall out during this process.

## Step 5



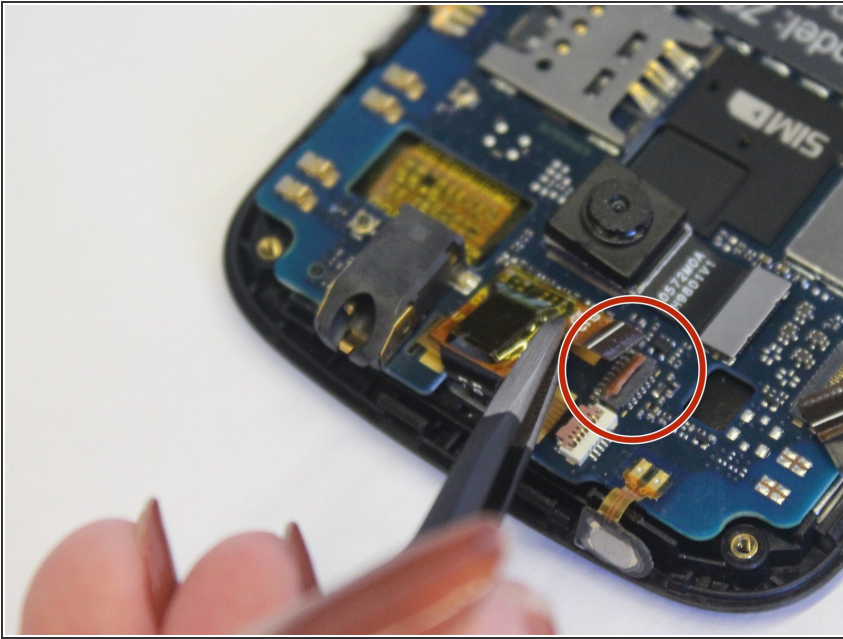
- Remove the midframe from the digitizer.

## Step 6 — Speaker



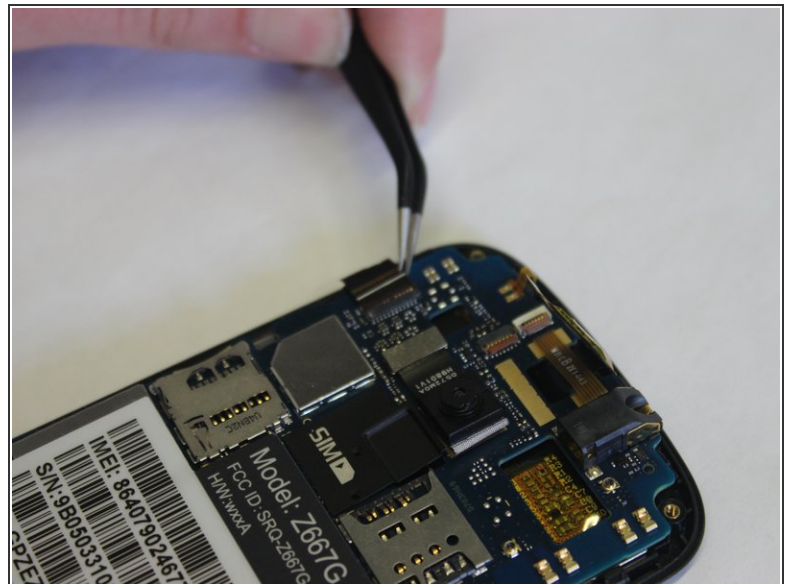
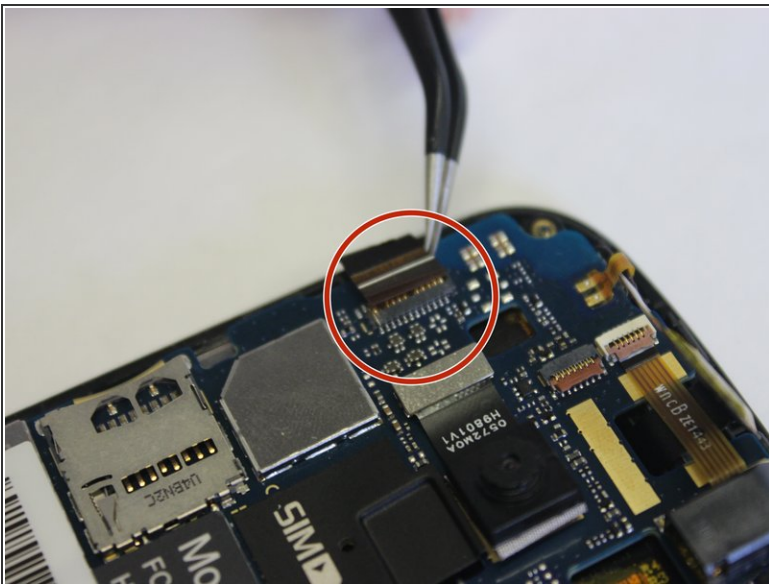
- Use tweezers to remove the lock button and volume stickers from the phone.
  - The volume buttons peel off much like a sticker.

## Step 7



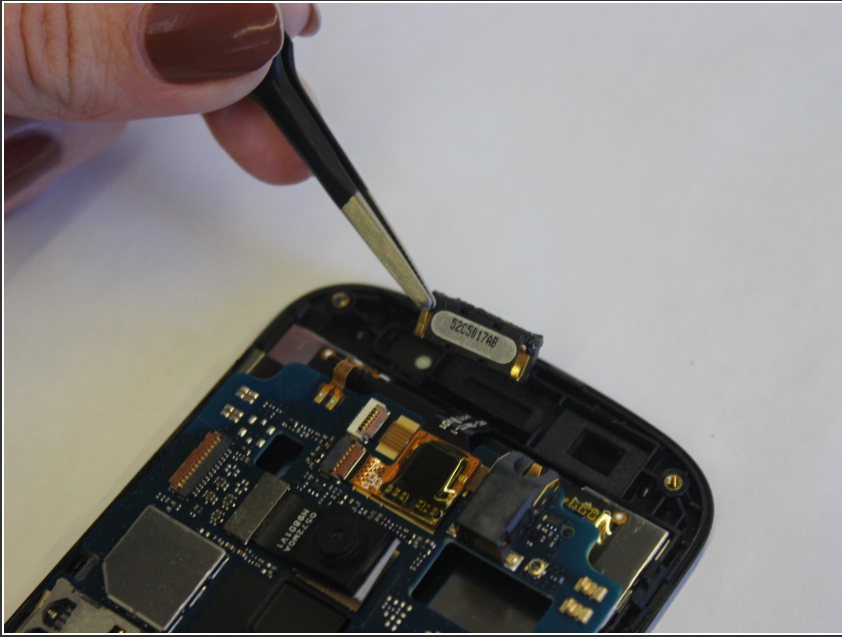
- Use a tweezers to lift the lock from the ZIF connector above the camera. Pull the ribbon from the connector.
- ⓘ The ribbon is connected by a lock. Flip the lock up to unlatch the ribbon with a set of tweezers.

## Step 8



- Use a tweezers to lift the lock from the ZIF connector. Pull the ribbon from the connector.
- ⓘ Like the camera ribbon, it has a latch that you need to flip to unlock.

## Step 9



- Pull the speaker from the phone by using a pair of tweezers.
- ⓘ The speaker has a sticky like back, it peels easiest with a tweezers.

To reassemble your device, follow these instructions in reverse order.